

# Retail / Medical For Lease River Ridge Commons III

NWC Ridge Road & Moon Lake Rd, New Port Richey, FL 34654 Pasco County



Commercial Real Estate Solutions®



J. Benjamin McLeish  
Vice President  
Mobile 813.334.4733  
Direct 813.490.9817  
bmcleish@equity.net

Logan Frame  
Advisor  
Mobile 860.803.9855  
Direct 813.490.9827  
lframe@equity.net

Dennis McClelland  
Advisor  
Mobile 813.390.8762  
Direct 813.390.8762  
dmclelland@equity.net

Tampa Office  
2144 W Main St  
Tampa, FL 33607  
www.equity.net

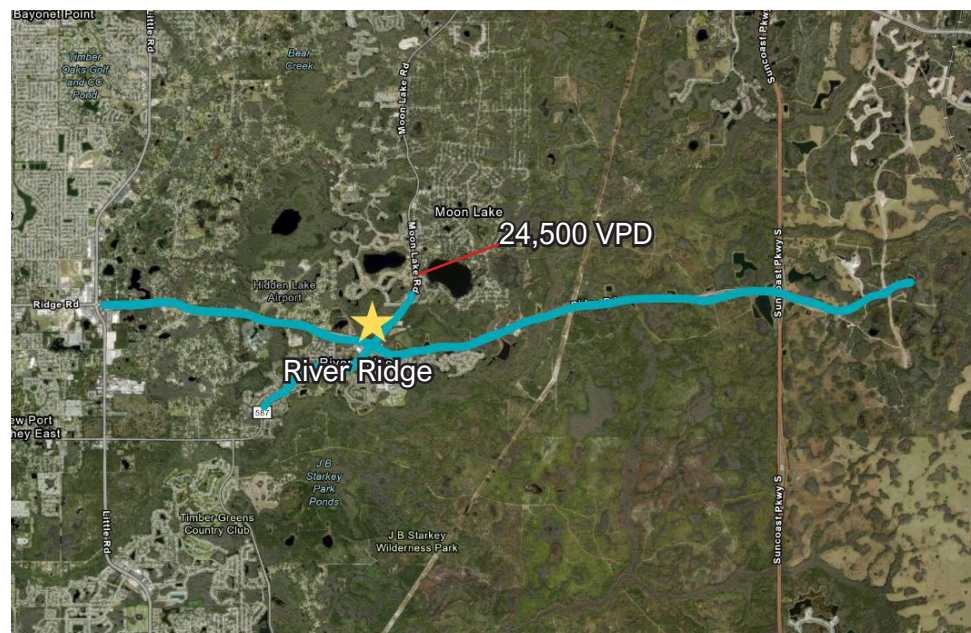
# Retail / Medical For Lease River Ridge Commons III

NWC Ridge Road & Moon Lake Rd, New Port Richey, FL 34654 Pasco County



## Property Highlights

- **NEW:** Construction of  $\pm$  35,000 SF retail/medical project located just west of Suncoast Parkway, Speros and Angeline
- One Retail Strip Center:  $\pm$  7,500 SF
  - Featuring an Endcap Drive-Thru
  - Customizable Square Footage
- Five Outparcel Pad Opportunities: Ideal for QSR, Automotive, Medical, Free-Standing, etc.
  - Build-to-suit and Ground Lease
- Delivery: Summer 2027
- Lighted access from Ridge Road & full access from Moon Lake Road
- Join area tenants including Publix, Heartland Dental, McDonald's, Burger King, Zaxby's, Ace Hardware, Dollar Tree & More



Demographics	1 Mile	3 Miles	5 Miles
Population	5,992	18,902	99,357
Households	1,253	10,625	38,052
Avg. HH Income	\$87,294	\$96,406	\$81,703
Total Employees	1,628	6,569	20,650

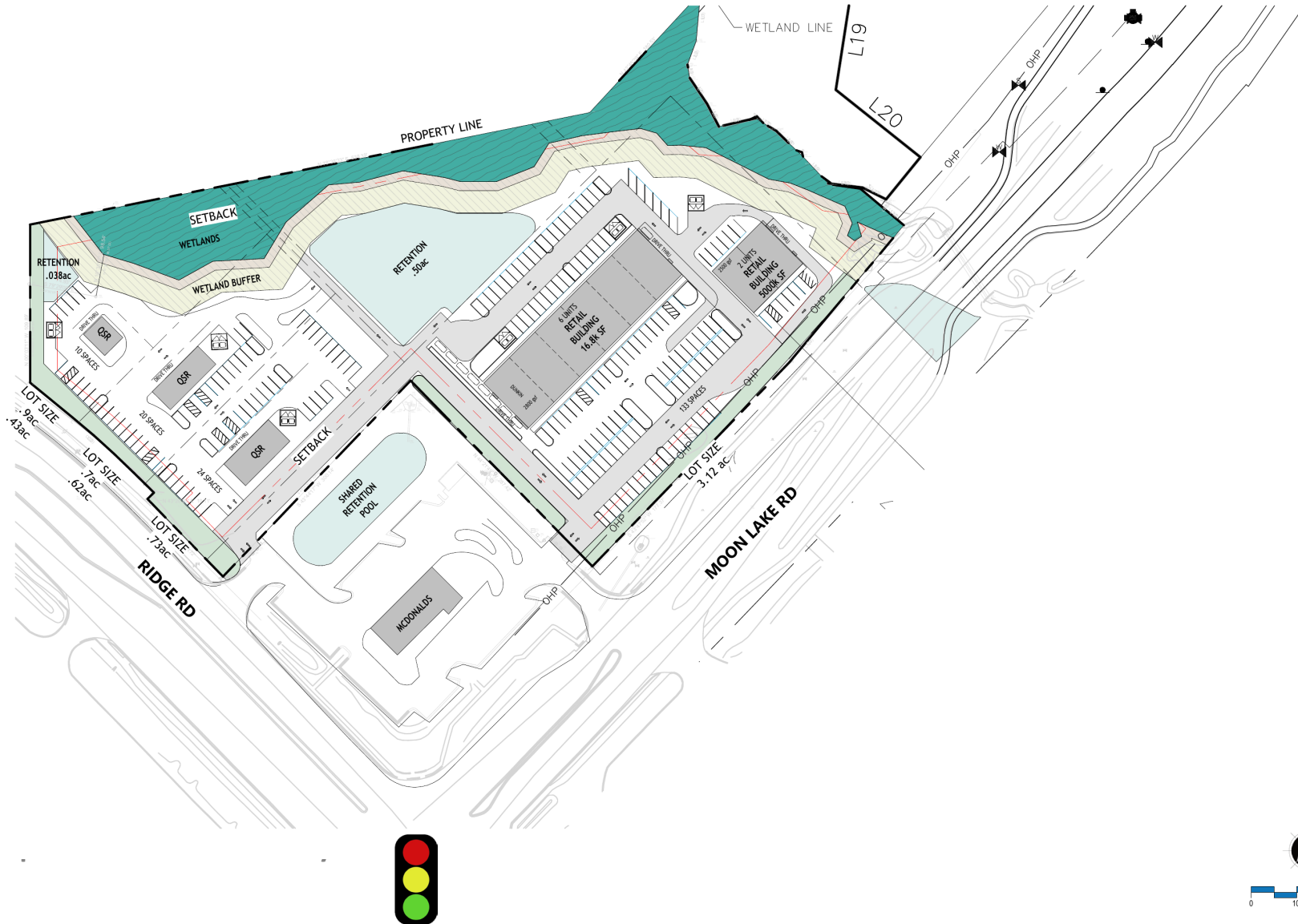
# Retail / Medical For Lease River Ridge Commons III

NWC Ridge Road & Moon Lake Rd, New Port Richey, FL 34654 Pasco County



Commercial Real Estate Solutions®

## Site Plan





# Retail / Medical For Lease River Ridge Commons III

NWC Ridge Road & Moon Lake Rd, New Port Richey, FL 34654 Pasco County



Commercial Real Estate Solutions®

## Merchant Aerial



RETAIL DESIGN COLLABORATION

**equity**<sup>®</sup>

Commercial **Real Estate** Solutions<sup>®</sup>

J. Benjamin McLeish  
Vice President  
Mobile 813.334.4733  
Direct 813.490.9817  
bmcleish@equity.net

Logan Frame  
Advisor  
Mobile 860.803.9855  
Direct 813.490.9827  
lframe@equity.net

Dennis McClelland  
Advisor  
Mobile 813.390.8762  
Direct 813.390.8762  
dmcclelland@equity.net

Tampa Office  
2144 W Main St  
Tampa, FL 33607  
[www.equity.net](http://www.equity.net)