

5703 CORSA AVENUE

WESTLAKE VILLAGE

FOR LEASE

WILLIAM KIEFER

Executive Managing Director
d: 805-288-5467
bkiefer@naicapital.com
Cal DRE Lic #00828915

TOM SEXTON

Vice President
d: 310.806.6111 | m: 310.871.5552
tsexton@naicapital.com
Cal DRE Lic #02094807

NAI CAPITAL - WESTLAKE VILLAGE

2555 Townsgate Rd, Suite 320
Westlake Village, CA 91361
d: 805 446 2400 | f: 805 446 2401
www.naicapital.com

NAICapital
COMMERCIAL REAL ESTATE SERVICES, WORLDWIDE

HIGHLIGHTS

- **Second Floor:**
3,267 RSF Available
- Monument Signage Available
- **Asking Rate:** \$1.95 PSF FSG
- 2.85/1,000 RSF Parking Ratio
- Surrounded by various amenities in vibrant area
- Incredible views of the Conejo Valley
- Exempt from Los Angeles Gross Receipts Taxes





WESTLAKE VILLAGE

Logo for Guitar Center, Target, Starbucks, and Hook Burger.

Logo for Alondus, Michaels, PetSmart, Staples, Chase, Smart & Final, Panda Express, and Chipotle.

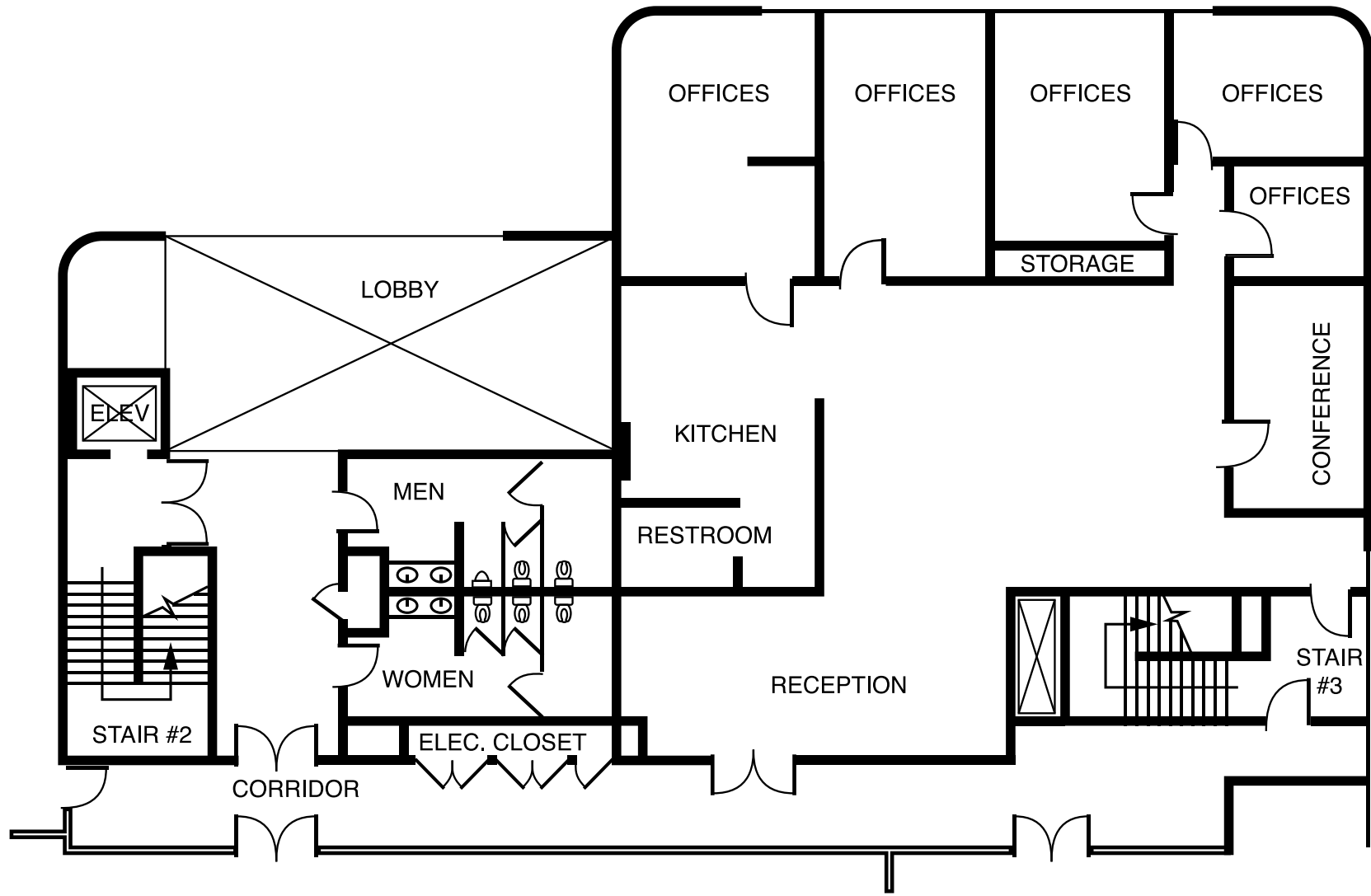
Logo for Costco Wholesale.

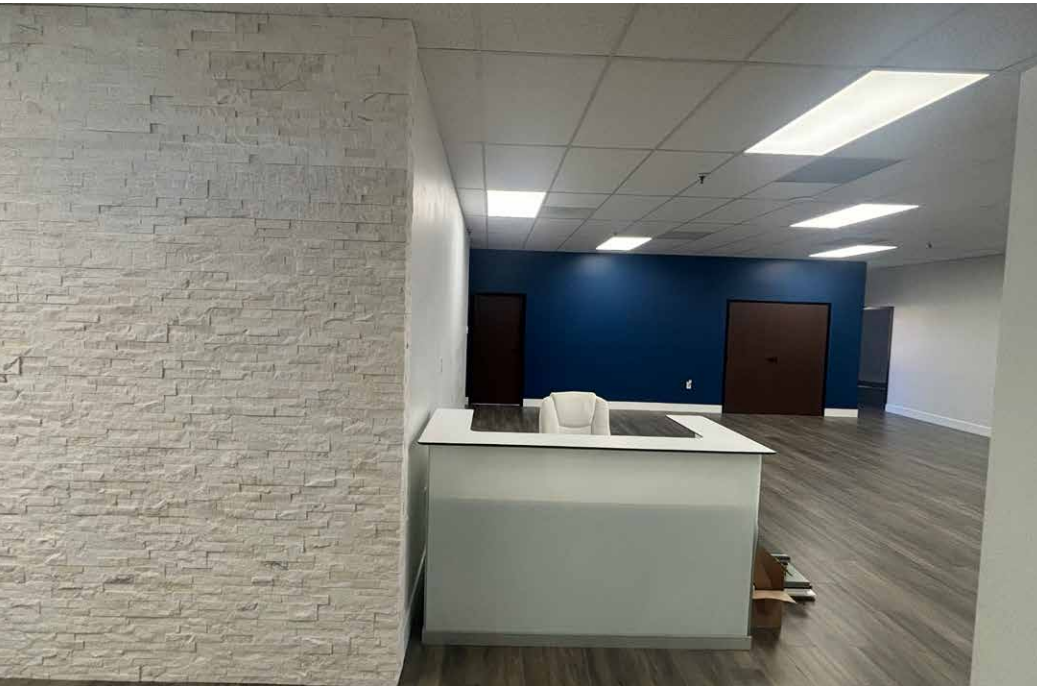
Logo for TJ-maxx, Jersey Mike's Subs, Dunkin', Bank of America, Baja Fresh, and Domino's.

SITE

2nd Floor

Suite	Size	Timing
#202	3,267 RSF	Now





5703 CORSA AVENUE

WESTLAKE VILLAGE

FOR LEASE

No warranty, express or implied, is made as to the accuracy of the information contained herein. This information is submitted subject to errors, omissions, change of price, rental or other conditions, withdrawal without notice, and is subject to any special listing conditions imposed by our principals. Cooperating brokers, buyers, tenants and other parties who receive this document should not rely on it, but should use it as a starting point of analysis, and should independently confirm the accuracy of the information contained herein through a due diligence review of the books, records, files and documents that constitute reliable sources of the information described herein. Logos are for identification purposes only and may be trademarks of their respective companies. NAI Capital Commercial, Inc. Cal DRE Lic. #02130474.

WILLIAM KIEFER

Executive Managing Director
d: 805-288-5467
bkiefer@naicapital.com
Cal DRE Lic #00828915

TOM SEXTON

Vice President
d: 310.806.6111 | m: 310.871.5552
tsexton@naicapital.com
Cal DRE Lic #02094807

NAI CAPITAL - WESTLAKE VILLAGE

2555 Townsgate Rd, Suite 320
Westlake Village, CA 91361
d: 805 446 2400 | f: 805 446 2401
www.naicapital.com

NAI Capital
COMMERCIAL REAL ESTATE SERVICES, WORLDWIDE