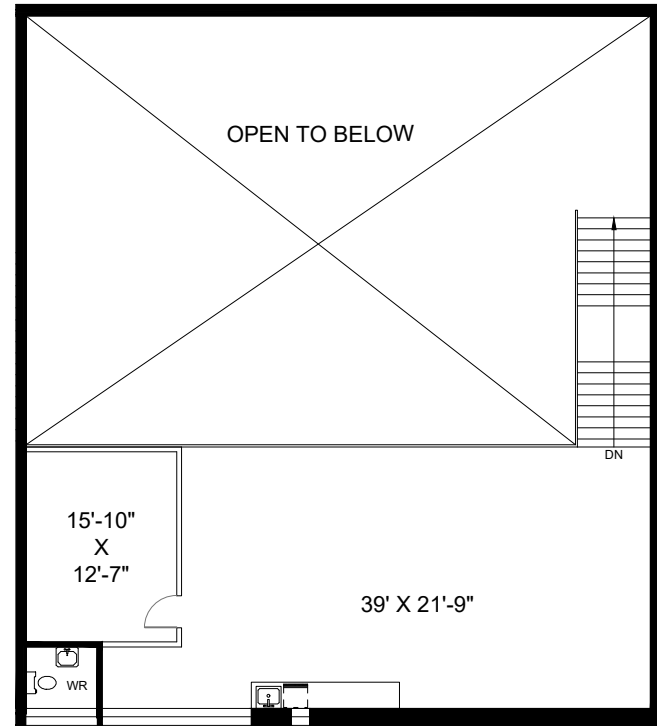
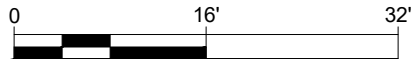


1ST FLOOR
OCCUPANT AREA: 3,232 SQ.FT.



2ND FLOOR
OCCUPANT AREA: 1,402 SQ.FT.



AUTHORISED BY THE ASSOCIATION OF PROFESSIONAL ENGINEERS OF ONTARIO TO OFFER PROFESSIONAL ENGINEERING SERVICES.

Drawings are to be used for preliminary planning purposes only and are not to be used for quantity estimates or construction. Dimensions must be site verified prior to using for any other purpose. No warranty is made or implied as to the accuracy of dimensions. Measurements and slopes for inaccessible areas are obtained using best estimates. This drawing is subject to additional terms and conditions as outlined in the contract.

ADDRESS: 6 CARLAW AVENUE, TORONTO, ON	OCCUPANT AREA 4,634 SQ.FT.	LOCATION PLAN: 	DRAWING DATE: April 18, 2019	DATE MEASURED: April 12, 2019
DRAWING TITLE: SUITE 101	RENTABLE AREA: 4,666 SQ.FT.		SCALE: 1/16" = 1'-0"	
PREPARED FOR: 2122232 ONTARIO INC.	R/U RATIO: 1.0000		DRAWN BY: AK	CHKD BY: IF
MEASURED ACCORDING TO: ANSI/BOMA Z65.2 - 2012, METHOD A	R/O RATIO: 1.0068		PREPARED BY: PLANIT MEASURING® 1-800-933-5136 info@planitmeasuring.com	