



Seize the opportunity to establish your business in one of the most coveted locations in SOHO! This exceptional retail space boasts extremely high foot traffic, situated directly in front of Subway and next to the renowned Popular Jewelry. The former home of a Juicer & Coffee Shop, the space is versatile and open to all uses, making it perfect for a variety of retail or service-oriented businesses.

Extreme Foot Traffic

Private Bathroom

Fully Built Out

HIGHLIGHTS

8 Foot Frontage

Subway Entrance Adjacent

800 sqft

Venting Possible

Featuring a pristine, beautifully built-out interior, this space offers an inviting atmosphere that will captivate your customers. With ample room for eye-catching signage, your brand will benefit from maximum visibility. Located directly across from McDonald's, your business will benefit from the steady stream of tourists, locals, residents, and office workers who walk by daily.

[Inquire For Price](#)



MORRIS TOBIAS
MTOBIAS@MONDAYMORNINGMGMT.COM
908.675.3547



255 CANAL

RETAIL SPACE | SOHO

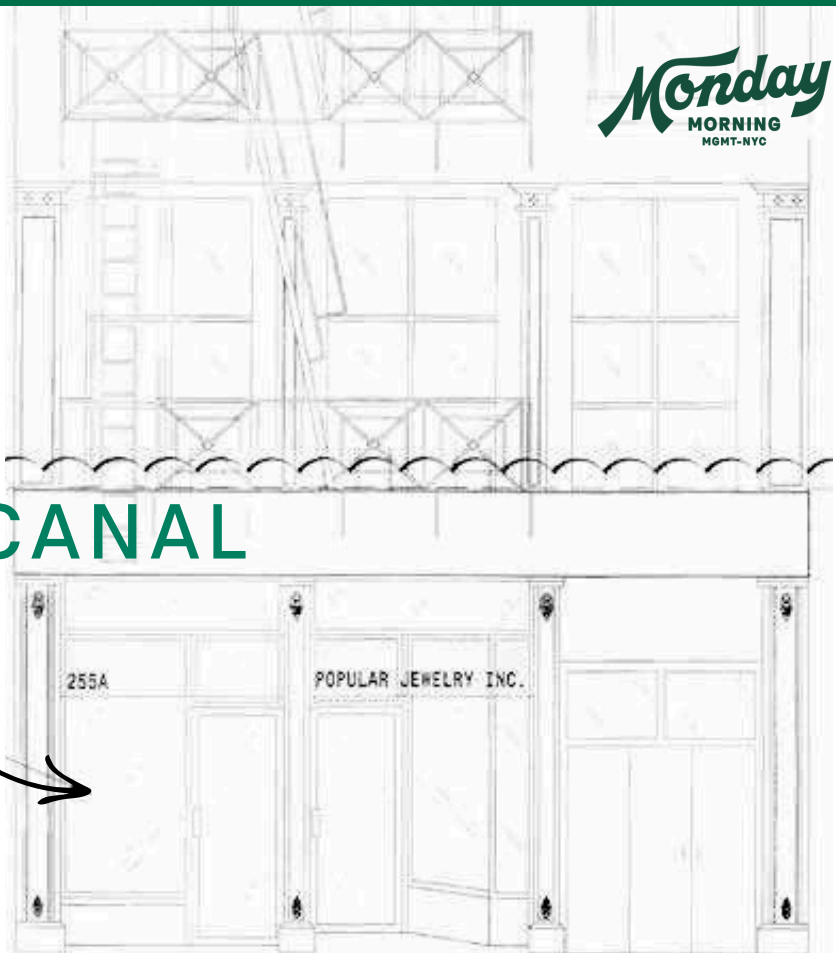


BETWEEN LAFAYETTE & BROADWAY | SOHO

Don't miss your chance to be part of the vibrant SOHO scene. Contact us today to schedule a viewing and explore the potential this prime corner location has to offer!

Monday
MORNING
MGMT-NYC

255 CANAL



MORRIS TOBIAS
MTOBIAS@MONDAYMORNINGMGMT.COM
908.675.3547

255 CANAL

NEIGHBORING RETAILERS



SUBWAY LINES

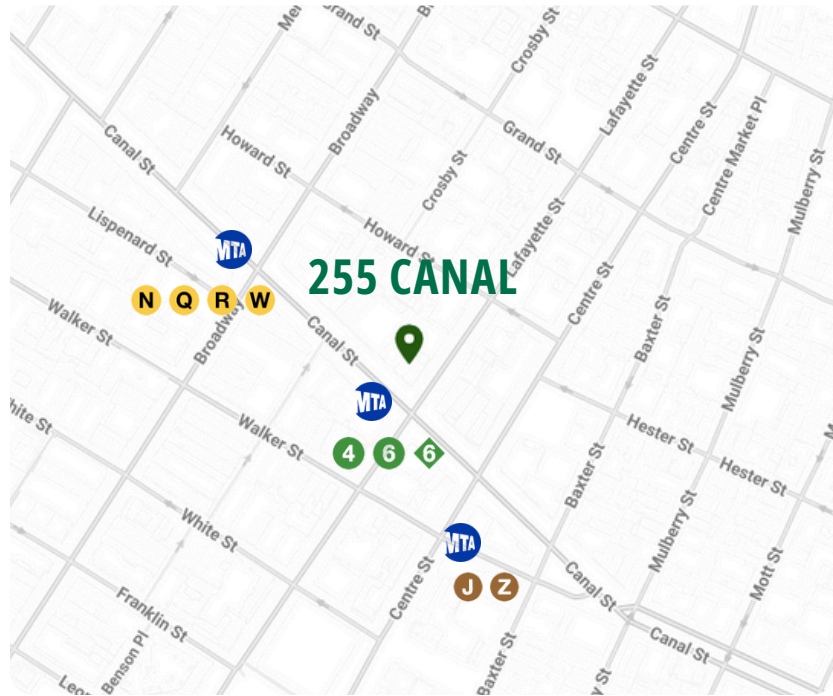


Subway Entrance Adjacent

800 sqft

Extreme Foot Traffic

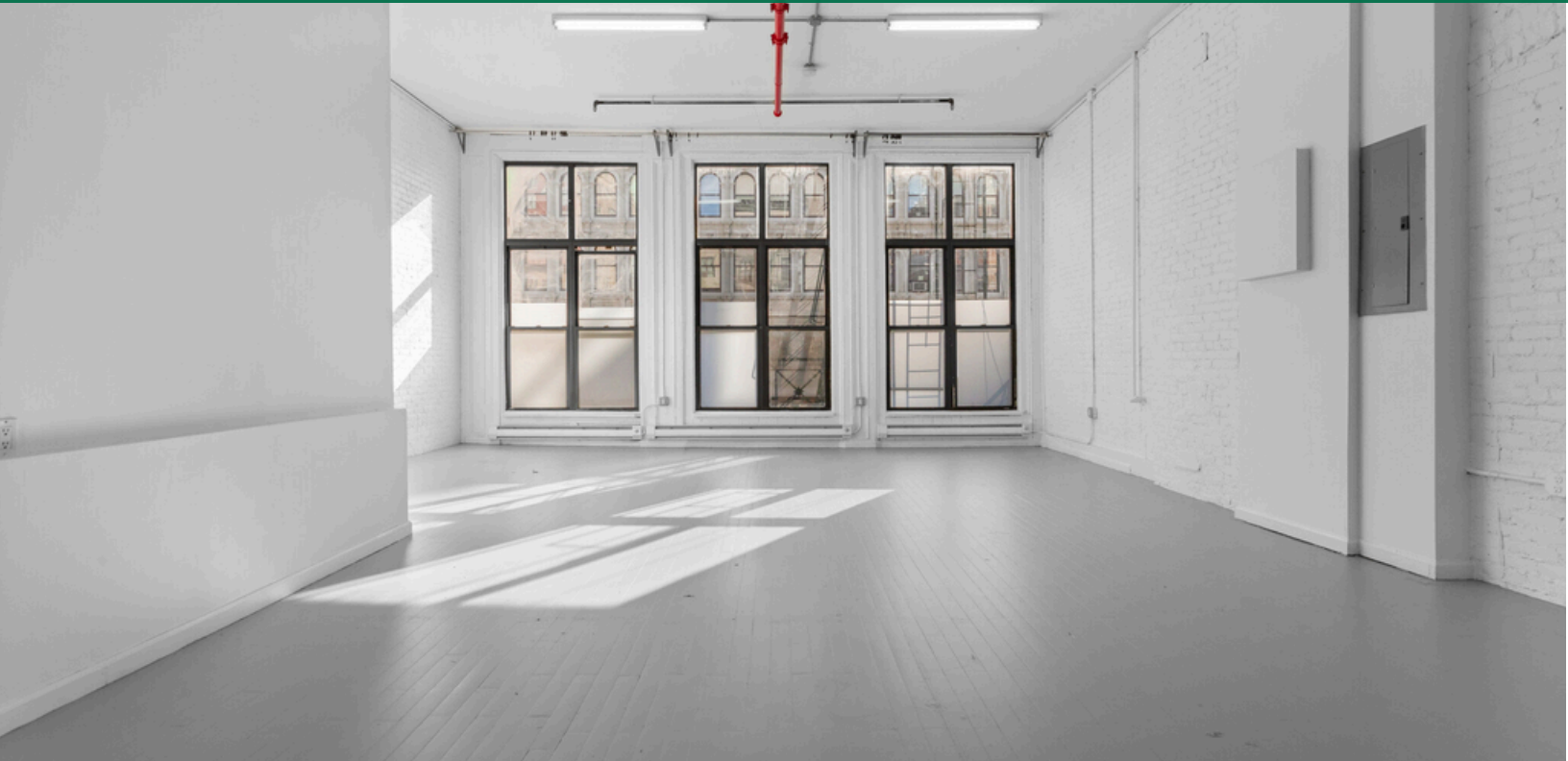
Located directly in front of the **Canal Street (J,N,Q,R,W,Z,6)** subway entrance, which was the 17th busiest station in New York City for Year End 2023, and was **accessed by over 10.5 million riders.**



BETWEEN LAFAYETTE & BROADWAY | SOHO



MORRIS TOBIAS
MTOBIAS@MONDAYMORNINGMGMT.COM
908.675.3547



Seize this rare opportunity to establish your business in one of SOHO's most sought-after locations! For decades, 255 Canal Street has been a vibrant home for artists, sculptors, painters, photographers, and more. The space features expansive windows that flood the area with natural light, soaring 12-foot ceilings, a private restroom, an open floor plan, and is suitable for all types of uses.

Open Floor Plan Layout

12 Foot Ceilings

Private Bathroom

HIGHLIGHTS

Large Windows

Excellent Condition

Extreme Foot Traffic

2000 sqft

Located on the second floor, this prime space is in excellent condition and boasts extreme foot traffic thanks to the Canal Street subway station right at your doorstep. With a walkability and transit score of 100, this area is truly a "foot traffic paradise".

[Inquire For Price](#)



MORRIS TOBIAS
MTOBIAS@MONDAYMORNINGMGMT.COM
908.675.3547

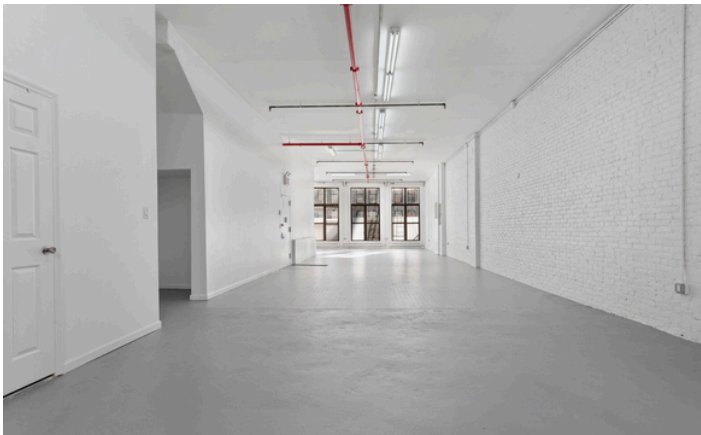


255 CANAL

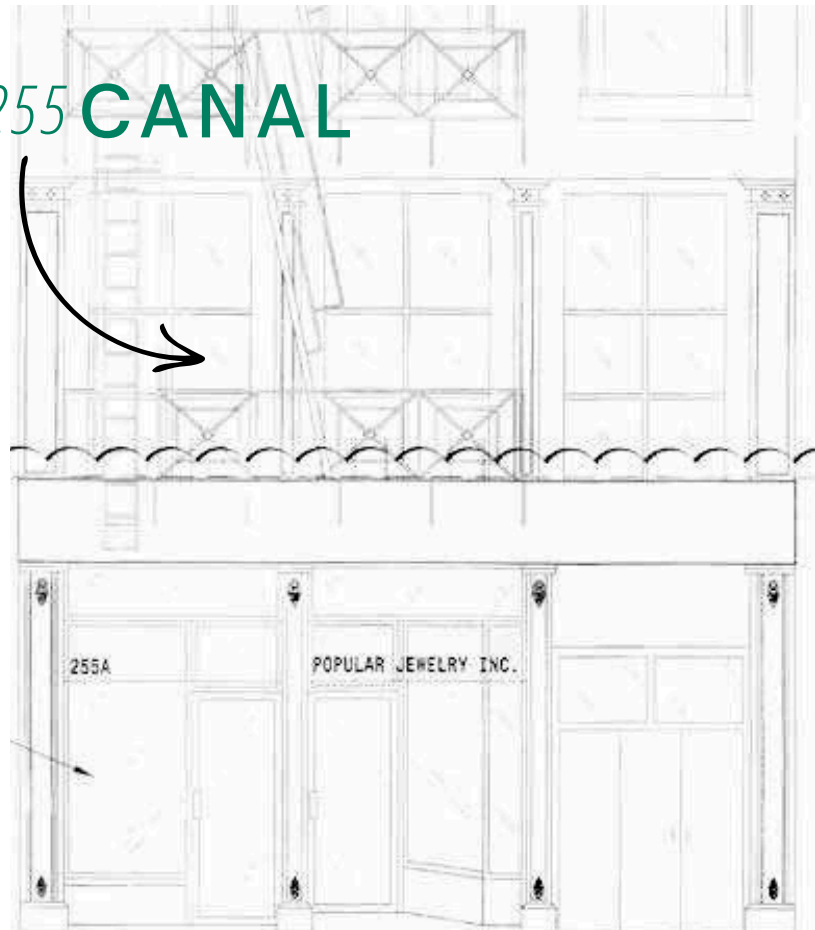
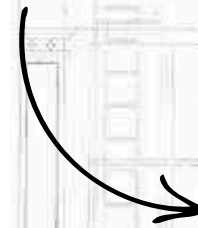
OFFICE/RETAIL | SOHO



BETWEEN LAFAYETTE & BROADWAY | SOHO



255 CANAL



Don't miss your chance to be part of the vibrant SOHO scene. Contact us today to schedule a viewing and explore the potential this prime corner location has to offer!



MORRIS TOBIAS
MTOBIAS@MONDAYMORNINGMGMT.COM
908.675.3547

255 CANAL

NEIGHBORING RETAILERS



SUBWAY LINES



Subway Entrance Adjacent

2000 sqft

Extreme Foot Traffic

Located directly in front of the **Canal Street (J,N,Q,R,W,Z,6)** subway entrance, which was the 17th busiest station in New York City for Year End 2023, and was **accessed by over 10.5 million riders.**



BETWEEN LAFAYETTE & BROADWAY | SOHO



MORRIS TOBIAS
MTOBIAS@MONDAYMORNINGMGMT.COM
908.675.3547