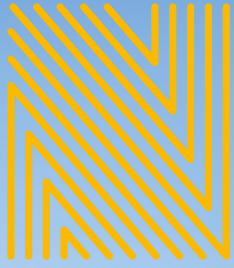




NOVA
EDINBURGH



NOVA

3 PONTON ST · EH3 9QQ

02

03

High quality, open plan office accommodation located in Edinburgh's prime business district with outstanding views of Edinburgh Castle.



Nova comprises modern office accommodation arranged over ground and four upper floors. The suites are accessed from a manned entrance foyer with lift access to all floors.



The available offices benefit from:

- Raised access floors
- Male and female toilets
- Accessible toilets
- Wheelchair accessibility
- Tea prep facilities
- Passenger lift access to all floors
- Outstanding views of Edinburgh Castle
- Open plan suites
- Comfort cooling
- Shower facilities
- Secure car parking and bike racks
- Energy Performance Certificate: C(44)

Building Accommodation

The suites have been measured in accordance with the RICS Code of Measuring Practice (6th Edition) and comprise the following net lettable areas:

Floor	Sq ft	Sq m
4th	Republic of Media	
3rd	TravelPerk	
2nd (Remaining)	1,712	159
2nd (Part Let)	Charles Stanley & Co	
1st (North)	1,680	156
1st (South)	1,746	162
Ground (North)	DentOutline	
Ground (South)	VFS Global	
Total	5,138	477

3rd Floor

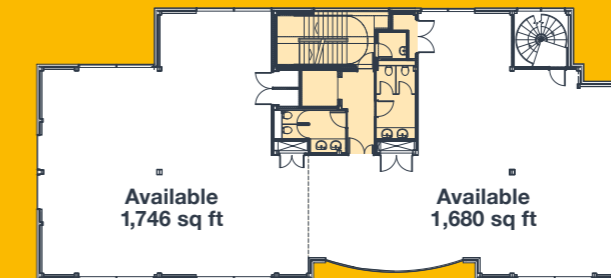


2nd Floor

1,712 sq ft / 159 sq m available



1st Floor



Ground Floor



Lifestyle

Nova is located within Edinburgh's Exchange District, the City's prime business district. Situated on the west side of Ponton Street, the property benefits from excellent transport links, with both Haymarket train station and the West End Princes Street tram stop within 12 minutes' walking distance. The location is well served by Edinburgh's extensive bus network, with frequent services on offer to all areas of the city.



06



The building benefits from proximity to a variety of hotels, bars and restaurants on Lothian Road and in Fountainbridge. Such local amenity complements a wider offering of city centre retail outlets on Princes Street and George Street.



Neighbours & Amenities

Local Occupiers

- 01 Hymans Robertson
- 02 Wood Mackenzie, i2 Office
- 03 Azets, Cromwell Property Group
- 04 Scottish Widows
- 05 Franklin Templeton
- 06 Lloyds Banking Group
- 07 Brewin Dolphin, IBM, Green Investment Bank, Law Society of Scotland, PwC, AON
- 08 DWF LLP
- 09 Companies House
- 10 Lindsays, Mott Macdonald
- 11 Bank of Scotland
- 12 Turcan Connell
- 13 STV
- 14 Brodies, Pinsent Mason

Health & Fitness

- 01 Hot Yoga
- 02 Pure Gym
- 03 One Spa
- 04 Therapie Clinic

Restaurants, Cafés & Bars

- 01 Loudons Café & Bakery
- 02 Barburrito
- 03 Café Klaris
- 04 The Hanging Bat
- 05 The Chanter
- 06 Innis & Gunn Beer Kitchen
- 07 All Bar One
- 08 BrewDog

Hotels

- 01 Sheraton Hotel
- 02 The Caledonian
- 03 Mercure Edinburgh Haymarket

Convenience

- 01 Sainsbury's Local
- 02 Tesco Express

07





FURTHER INFORMATION

For further information or to arrange a viewing
please contact the joint letting agents:



Mike Irvine
+44 7919 918 664
mike.irvine@savills.com

Kate Jack
+44 7815 032 092
kate.jack@savills.com



Simon Capaldi
+44 7770 012 255
simon.capaldi@knightfrank.com

Erin Beaton
+44 7976 668 975
erin.beaton@knightfrank.com

Important notice Savills/Knight Frank for themselves and for the vendors or lessors of this property whose agents they are give notice that: (i) The particulars are set out as a general outline only for the guidance of intending purchasers or lessees, and do not constitute, nor constitute part of an offer or contract; (ii) all descriptions, dimensions, references to condition and necessary permissions for use and occupation, and other details are given in good faith and are believed to be correct but any intending purchasers or tenants should not rely on them as statements or representations of fact but satisfy themselves by inspection or otherwise as to the correctness of each of them; (iii) no person in The employment of Savills/Knight Frank has any authority to make or give any representation or warranty whatsoever in relation to this property. Date of preparation of details February 2025.