



NEWTON CORPORATE CENTER

5803 NEWTON DRIVE, CARLSBAD CA 92008



New Availability | 17,587 - 21,948 SF of Industrial/Flex Space For Lease

LEE & ASSOCIATES
COMMERCIAL REAL ESTATE SERVICES

LITTLE DRAGOVIC TEAM
78 Corridor Industrial Advisors

ELION PARTNERS

Marko Dragovic
mdragovic@lee-associates.com
760.929.7839
CalBRE #01773106

Isaac Little
ilittle@lee-associates.com
760.929.7862
CalBRE #01702879

Olivia Baffert
obaffert@lee-associates.com
760.448.1376
CalBRE #02211874

project overview

The Newton Corporate Center is an approximate 71,602 SF highly functional, Industrial/Flex property consisting of four suites ranging in size from 10,500 SF to 22,000 square feet. Built in 1997 and renovated in 2009 and 2016, the Property has benefited from long-term institutional ownership and management. Superbly located in the prominent Carlsbad Research Center, a 500 AC master-planned innovation park, the Property provides a high image corporate headquarters setting with visibility from Faraday Avenue and ease of access to Interstate 5 (I-5).



site plan



TENANTS

SUITE A: 

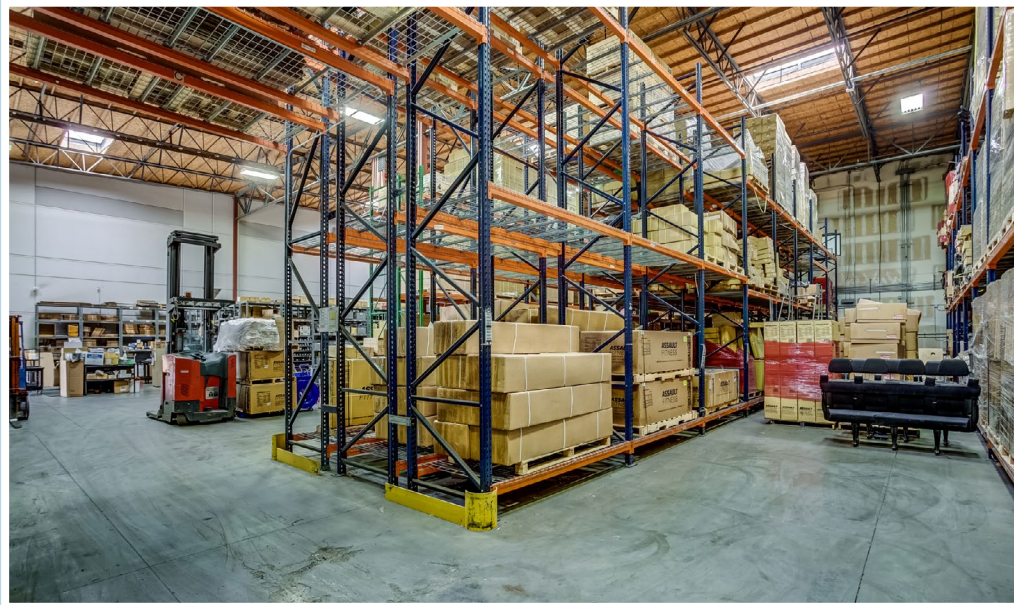
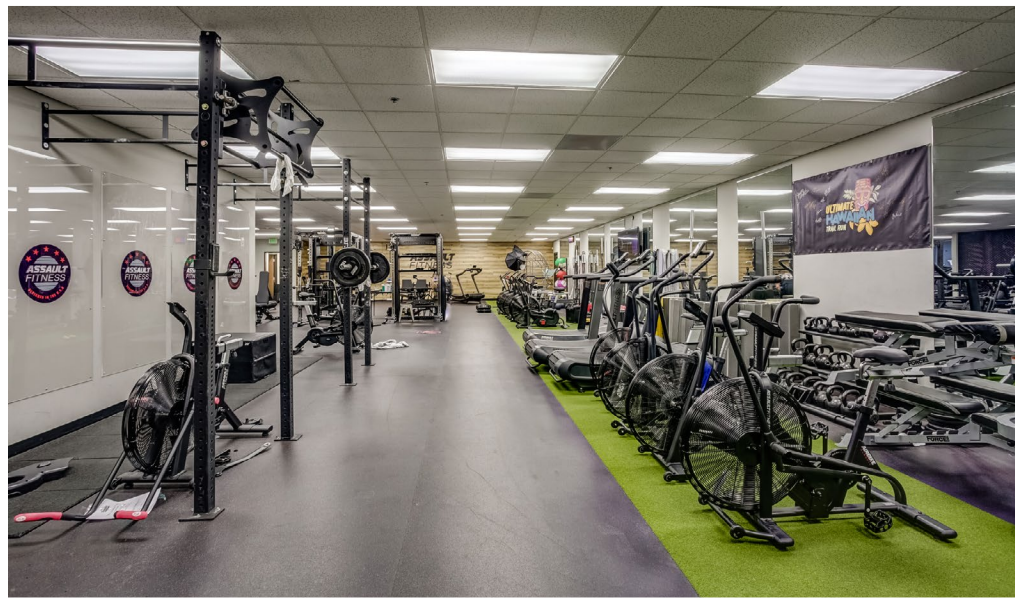
SUITE B: AVAILABLE

SUITE C: 

SUITE D: AVAILABLE

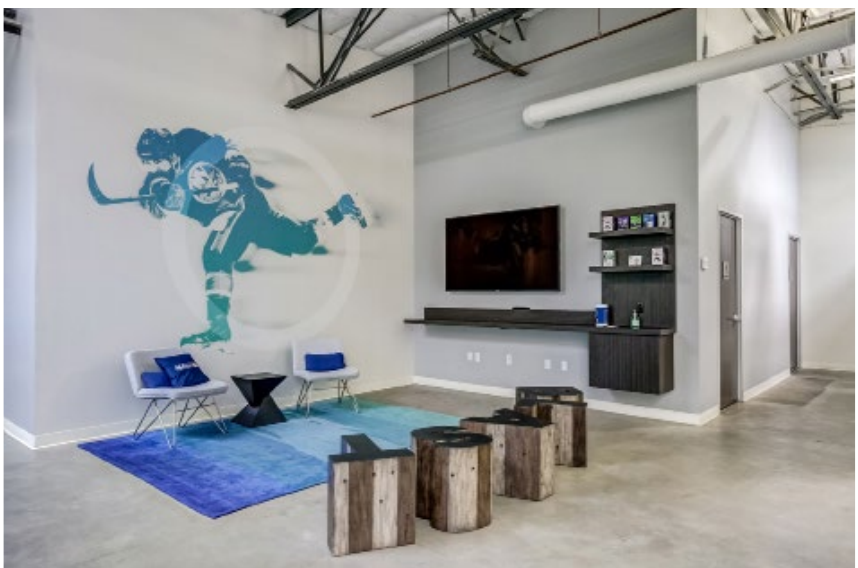


premises photos - suite B

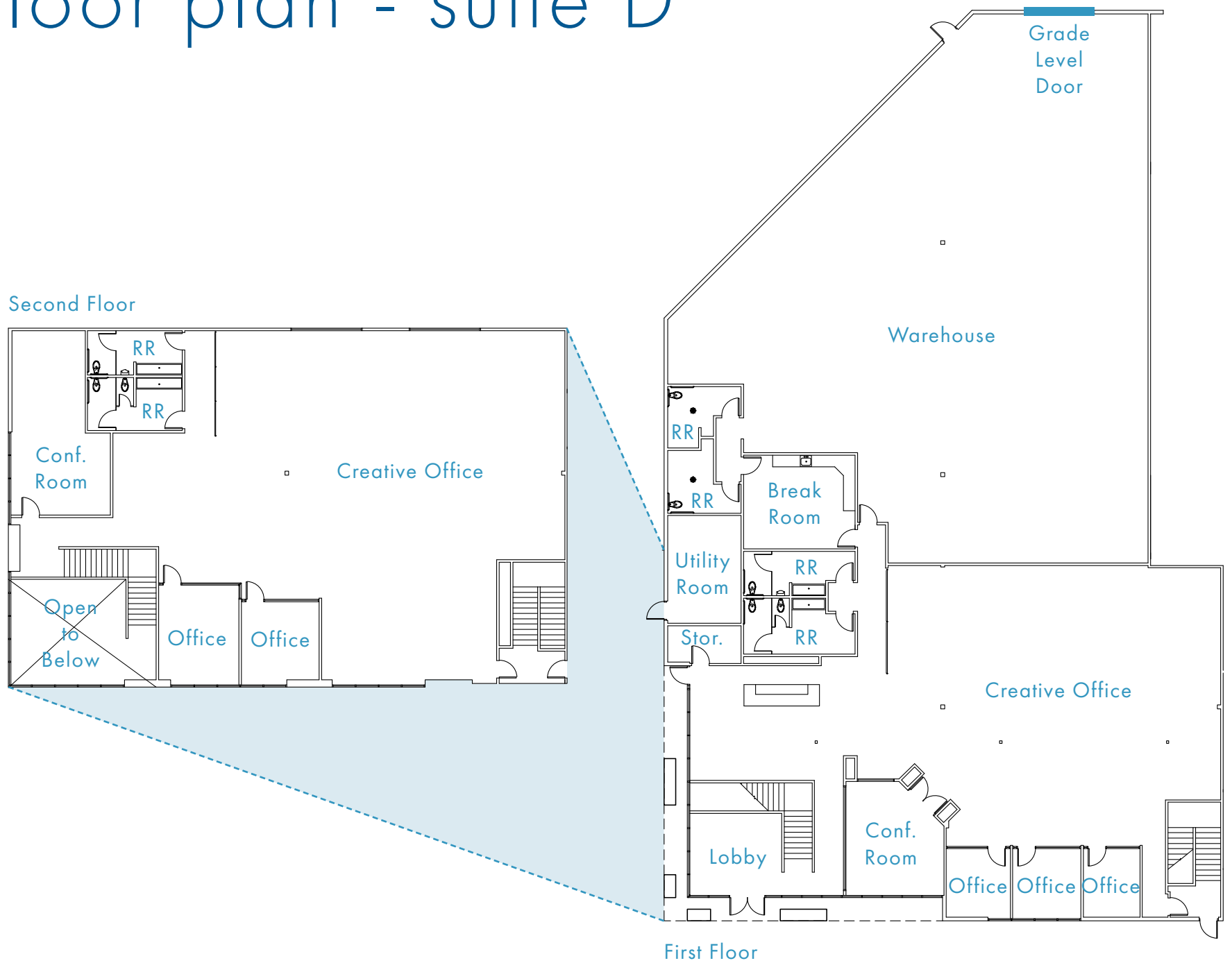


premises overview - suite D

ADDRESS:	5803 Newton Drive, Suite D, Carlsbad, CA 92008
PROJECT NAME:	Newton Corporate Center
RENTABLE SF:	17,587 Square feet
% IMPROVED:	10,578 SF (60%)
% WAREHOUSE:	7,009 SF (40%)
CLEAR HEIGHT:	24' Minimum
LOADING:	One (1) grade level loading door
FIRE SPRINKLERS	Yes, fire sprinklers in place
POWER:	600 Amps, 277/480V
ROOF:	A mineral surface cap sheet over multiple asphalt saturated felt
HVAC:	Office area is conditioned by roof- mounted, electric heat pumps
ZONING:	CM Zoning
PARKING RATIO:	2.7 per 1,000 SF
LEASE RATE:	Lease Rate Negotiable - Call Brokers
ESTIMATED NNN EXPENSES:	\$0.40/SF
AVAILABILITY:	Immediately



floor plan - suite D

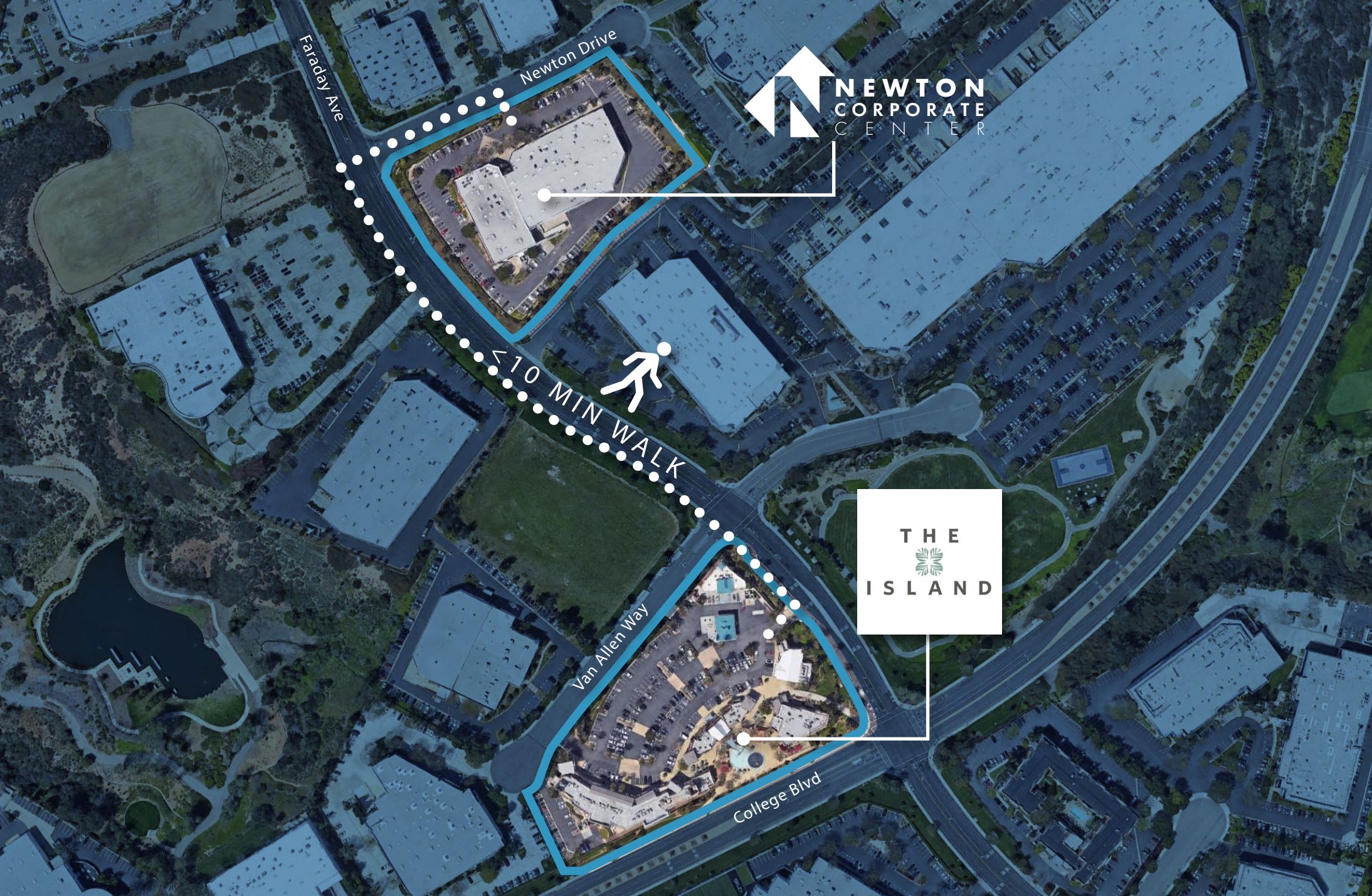


*Call brokers to schedule tour

premises photos - suite D



get your steps in for lunch

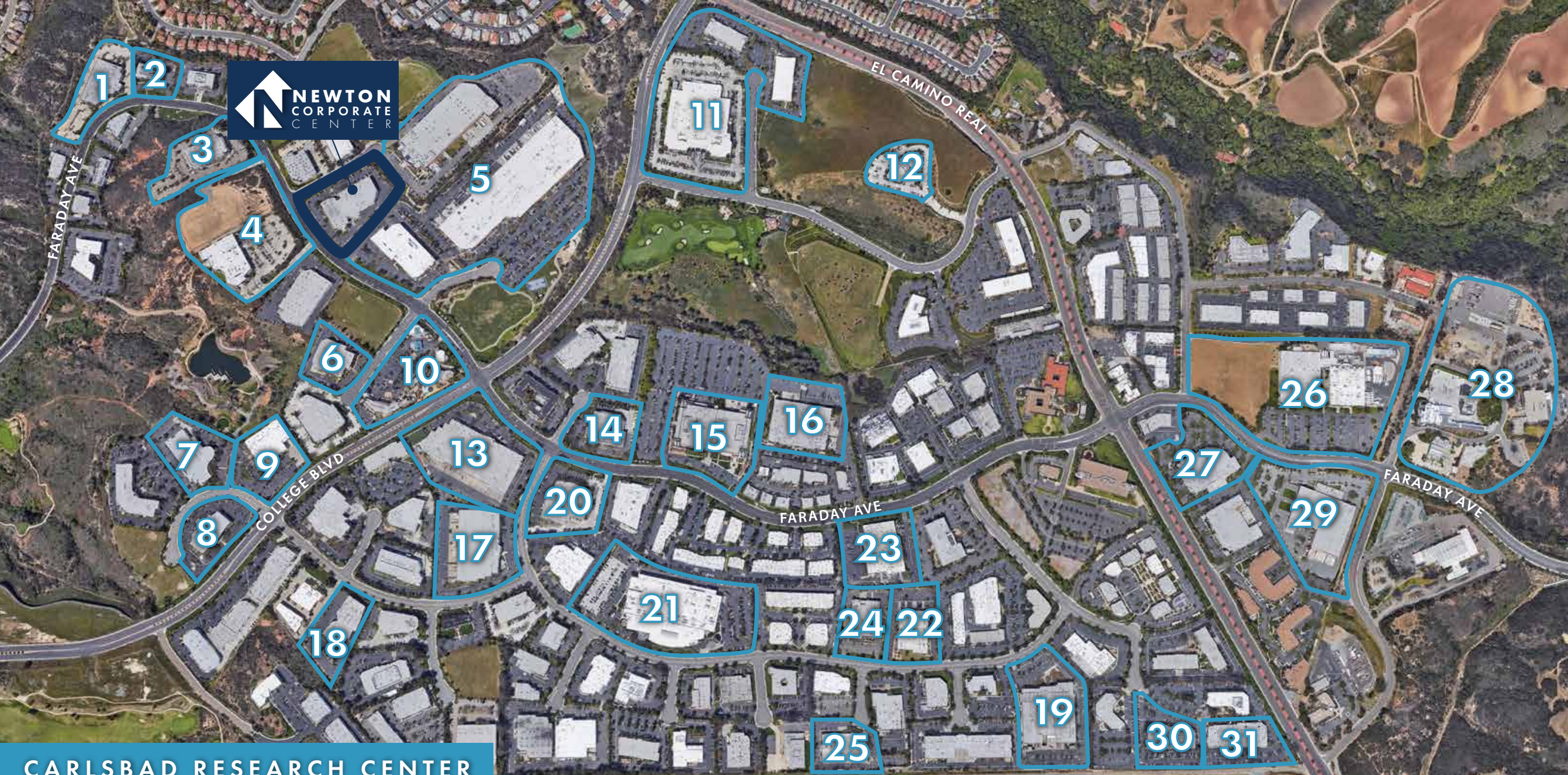


aerial map



- Encina Power Plant
- Agua Hedionda Lagoon
- Oceanside Pier
- Lego Land
- The Crossing Golf Course
- Carlsbad Research Center
- McClellan Palomar Airport
- Carlsbad Oaks West Business Park
- Carlsbad Oaks East Business Park
- Carlsbad Oaks North Business Park
- ViaSat Headquarters
- Bressi Ranch Village Center
- The Square at Bressi Ranch
- Spectrum Flex at Bressi Ranch
- Bressi Ranch Corporate Center
- Palomar Forum Business Park
- Forum at Carlsbad
- Grey Hawk Business Center
- Carlsbad Race Way Business Park
- Keystone Innovation Industrial Park





CARLSBAD RESEARCH CENTER

- | | | | | |
|------------------------------|----------------------------|----------------------|-------------------------|-----------------------|
| 1 Autogenomics | 7 Carbon by Design | 13 Upper Deck | 19 Quidel | 25 L-3 Photonics |
| 2 Sciencell | 8 Genoptix | 14 Argonaut MFG | 20 Medtronic | 26 Beckman Coulter |
| 3 City of Carlsbad | 9 Cobra Puma Golf | 15 IDEC Corp | 21 Callaway Golf | 27 Aptera Motors |
| 4 The Iris Group | 10 The Island @ Carlsbad | 16 Actus Medical | 22 Total Source MFG | 28 City of Carlsbad |
| 5 Thermo Fisher Scientific | 11 Taylor Made | 17 DuPont | 23 Abbot Laboratories | 29 FedEx |
| 6 SMAC | 12 Scripps | 18 Full Swing Golf | 24 Mercedes-Benz | 30 GenMark DX |
| | | | | 31 MaxLinear |



corporate
neighbors



NEWTON CORPORATE CENTER

5803 NEWTON DRIVE, CARLSBAD CA 92008

Marko Dragovic
mdragovic@lee-associates.com
760.929.7839
CalBRE #01773106

Isaac Little
ilittle@lee-associates.com
760.929.7862
CalBRE #01702879

Olivia Baffert
obaffert@lee-associates.com
760.448.1376
CalBRE #02211874



LITTLE DRAGOVIC TEAM
78 Corridor Industrial Advisors



ELION PARTNERS

Lee & Associates Commercial Real Estate Services, Inc. - NSDC | 1900 Wright Place, Suite 200, Carlsbad, CA 92008 | P: (760) 929-9700 | F: (760) 929-9977

No warranty or representation is made to the accuracy of the foregoing information. Terms of sale or lease and availability are subject to change or withdrawal without notice.
Any of the foregoing information will need to be separately verified by Buyer.