

savills

SUBLEASE

OFFICE / R&D BUILDING AVAILABLE FOR SUBLEASE

15251 ALTON PARKWAY, IRVINE, CA 92618

SPACE PROFILE

8,137 SF

Total Square Feet

6,787 SF

Office SF

1,350 SF

Warehouse SF

Withheld

Asking Rate

90 Days

Availability

07/31/2026

Sublease Term

ALTON PLAZA

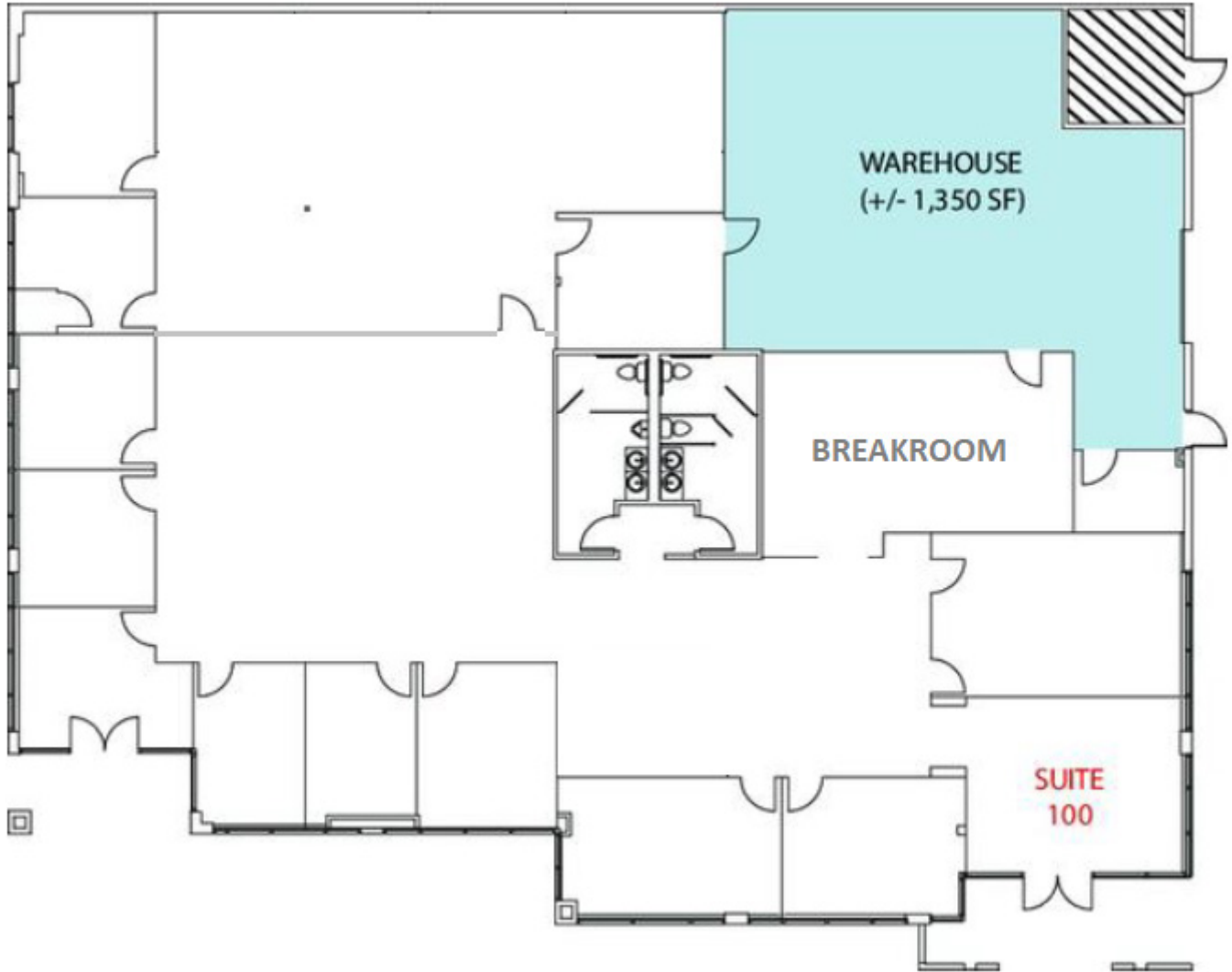
Richly landscaped 19-building office/R&D campus offering 219,000 sq. ft.

KEY HIGHLIGHTS

- Single-story building (±6,787 SF Office; ±1,350 SF Warehouse)
- Parking Ratio: 3.30/1,000 SF
- Building top signage available
- New outdoor workspaces for meetings, collaboration and socializing
- Convenient access to the I-5, I-405 and 133 Freeways and 241 Toll Road
- Call to schedule tour



FLOOR PLAN | 8,137 RSF



Tony DeFrancis
+1 949 706 6589
tdefrancis@savills.us
License 01890980

David L. Willis, MCR
+1 714 328 5433
david.willis@email.com
License 00887597

The information contained in this communication has been obtained from a variety of sources believed to be reliable but has not been verified. NO WARRANTY OR REPRESENTATION, EXPRESS OR IMPLIED, IS MADE AS TO THE CONDITION OF THE PROPERTY OR ACCURACY OR COMPLETENESS OF THE INFORMATION CONTAINED HEREIN AND SAME IS SUBMITTED SUBJECT TO ERRORS, OMISSIONS, CHANGE OF PRICE, RENTAL OR OTHER CONDITIONS, WITHDRAWAL WITHOUT NOTICE AND TO ANY SPECIFIC CONDITIONS IMPOSED BY THE PROPERTY OWNER OR LESSOR.

SITE PLAN | 8,137 RSF



Tony DeFrancis
+1 949 706 6589
tdefrancis@savills.us
License 01890980

David L. Willis, MCR
+1 714 328 5433
david.willis@email.com
License 00887597

The information contained in this communication has been obtained from a variety of sources believed to be reliable but has not been verified. NO WARRANTY OR REPRESENTATION, EXPRESS OR IMPLIED, IS MADE AS TO THE CONDITION OF THE PROPERTY OR ACCURACY OR COMPLETENESS OF THE INFORMATION CONTAINED HEREIN AND SAME IS SUBMITTED SUBJECT TO ERRORS, OMISSIONS, CHANGE OF PRICE, RENTAL OR OTHER CONDITIONS, WITHDRAWAL WITHOUT NOTICE AND TO ANY SPECIFIC CONDITIONS IMPOSED BY THE PROPERTY OWNER OR LESSOR.

savills.us

