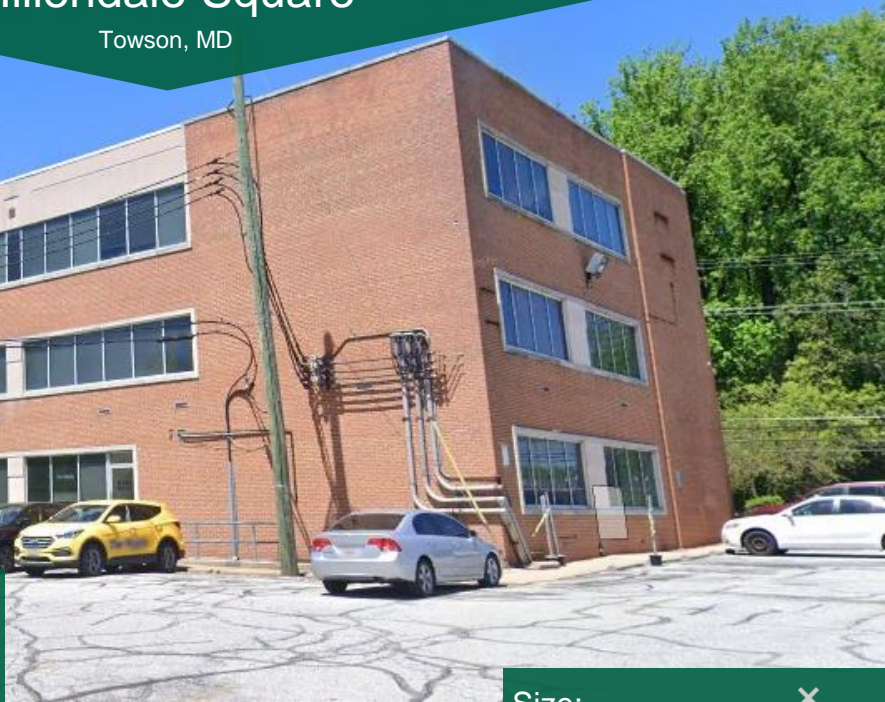


# Hillendale Square

Towson, MD

Located at  
1045 - 1055 Taylor Ave, Towson, MD



## Demographics



### Population

1 mile: 21,589  
3 miles: 167,058  
5 miles: 379,291



### Daytime Population

1 mile: 15,634  
3 miles: 153,229  
5 miles: 377,229



### Households

1 mile: 9,075  
3 miles: 66,437  
5 miles: 154,223



### Household Income (Avg.)

1 mile: \$96,400  
3 miles: \$110,600  
5 miles: \$115,300

## Property Highlights

- Flexible Office Spaces
- 100 SF – 10,000 SF Available
- Strong Tenant Mix
- Affluent submarket
- Busy retail and office corridor
- Strategic Location
- Competitive Lease Rates

## Nearby Businesses

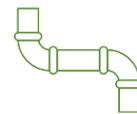
Lowe's, Aldi, Burger King, Planet Fitness, McDonald's, Taco Bell, Subway, Giant Food, CVS, Cricket Wireless, Public Storage, Pizza Hut, Dunkin Donuts, IHOP, and more

Size:  
61,291 SF  
2.68 Acres



Traffic Counts (per day)

Taylor Ave : 21,770



Utilities

Water, Sewer, Gas,  
Electric Available



Zoning

BL CCC /  
DR 5.5

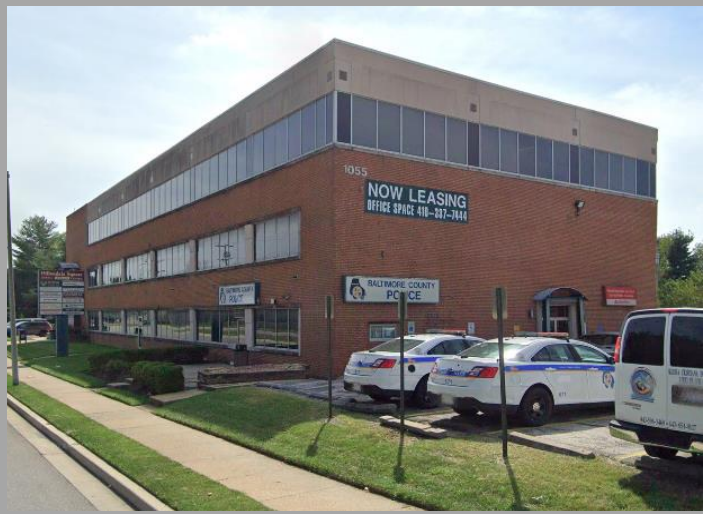


**GORJIAN**  
ACQUISITIONS

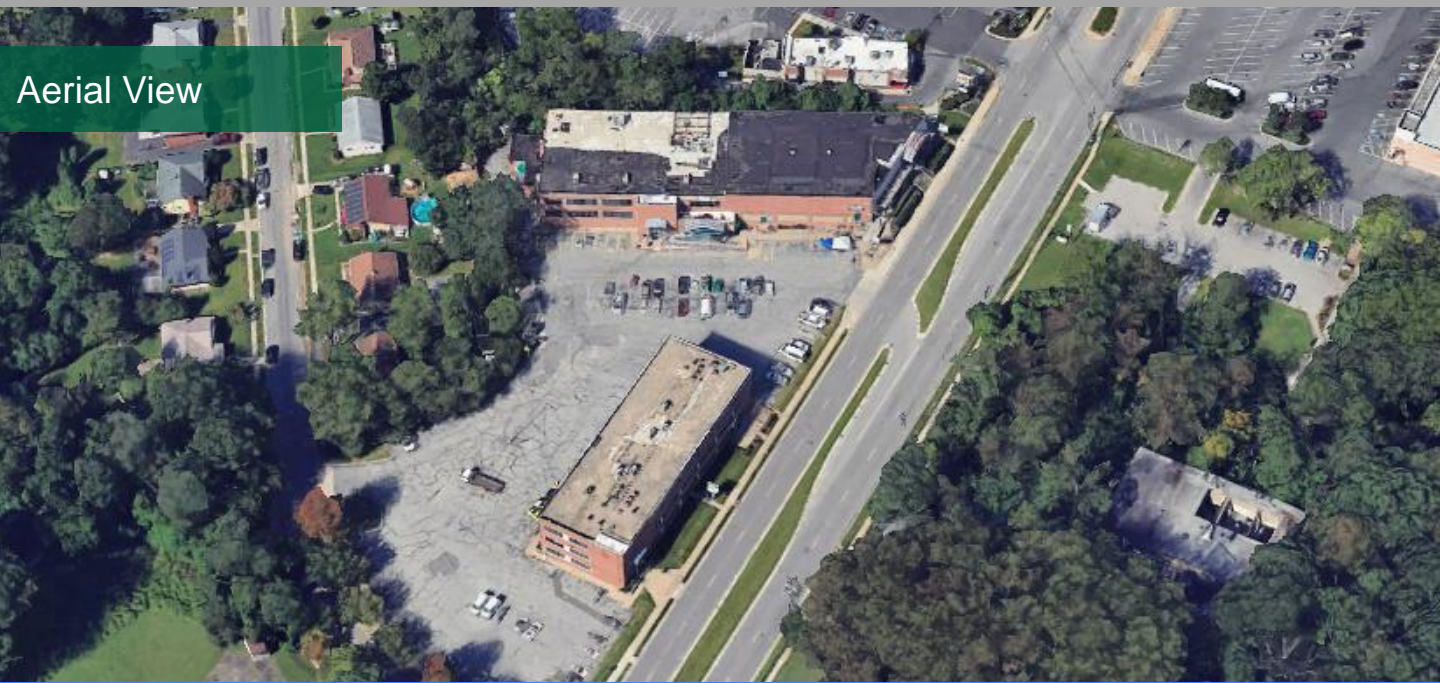
Jordan Gorjian  
Chief Operating Officer  
jordan@gorjianacq.com | gorjianacq.com  
516.858.0238

Find me on [LinkedIn](#) | [View Listings](#)

# Property Photos



# Aerial View



Submit an offer today by [clicking here!](#)