

FOR LEASE

KOLL SAVI BUSINESS CENTER

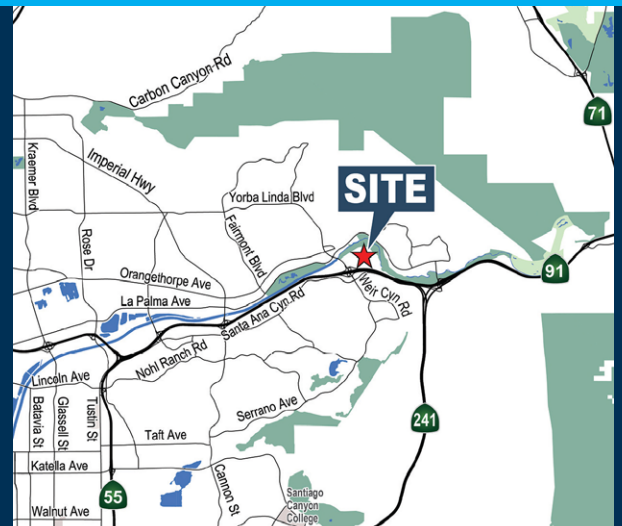


22800 SAVI RANCH PARKWAY

YORBA LINDA, CALIFORNIA

PROPERTY FEATURES

- Corporate Image Office Property
- Suites Available From \pm 1,200 to \pm 15,000 SF
- Approximately 3 Acre Property Providing Ample No Cost Parking
- Elevator Served High Image Building
- Direct Access to the Riverside (91) Freeway at Weir Canyon Road & Immediate access to South Orange County (241)
- Adjacent to many amenities including retail services, restaurants and hotels



Voit
REAL ESTATE SERVICES

Barry Walshe
Vice President | Partner
(714) 935-2309
bwalshe@voitco.com
Lic. #01991785

2400 E. Katella Avenue, Suite 750 | Anaheim, California 92806 | (714) 978-7880 | (714) 978-9431 FAX | Lic #01991785 | www.VoitCo.com

Licensed as Real Estate Salespersons by the DRE. The information contained herein has been obtained from sources we deem reliable. While we have no reason to doubt its accuracy, we do not guarantee it. ©2026 Voit Real Estate Services, Inc. All Rights Reserved. Lic #01991785.

FOR LEASE

KOLL SAVI BUSINESS CENTER

22800 SAVI RANCH PARKWAY, YORBA LINDA, CA

2-STORY HIGH IMAGE OFFICE BUILDING | ±48,794 TOTAL RENTABLE SQUARE FEET
RECENT HIGH IMAGE LOBBY REMODEL

FLOOR	SUITE	TOTAL SF	LEASE RATE PSF	COMMENTS
2	200	± 3,082 SF	\$2.49 FSG	Office Space - Reception area with double-door entrance, 2 conference rooms, 6 private offices, open area, and break room/kitchenette. Corner Location!
2	210	± 1,420 SF	\$2.49 FSG	Office Space - 3 private offices, and open area.

Voit
REAL ESTATE SERVICES

Barry Walsh
Vice President | Partner
(714) 935-2309
bwalsh@voitco.com
Lic. #01991785

2400 E. Katella Avenue, Suite 750 | Anaheim, California 92806 | (714) 978-7880 | (714) 978-9431 FAX | Lic #01991785 | www.VoitCo.com

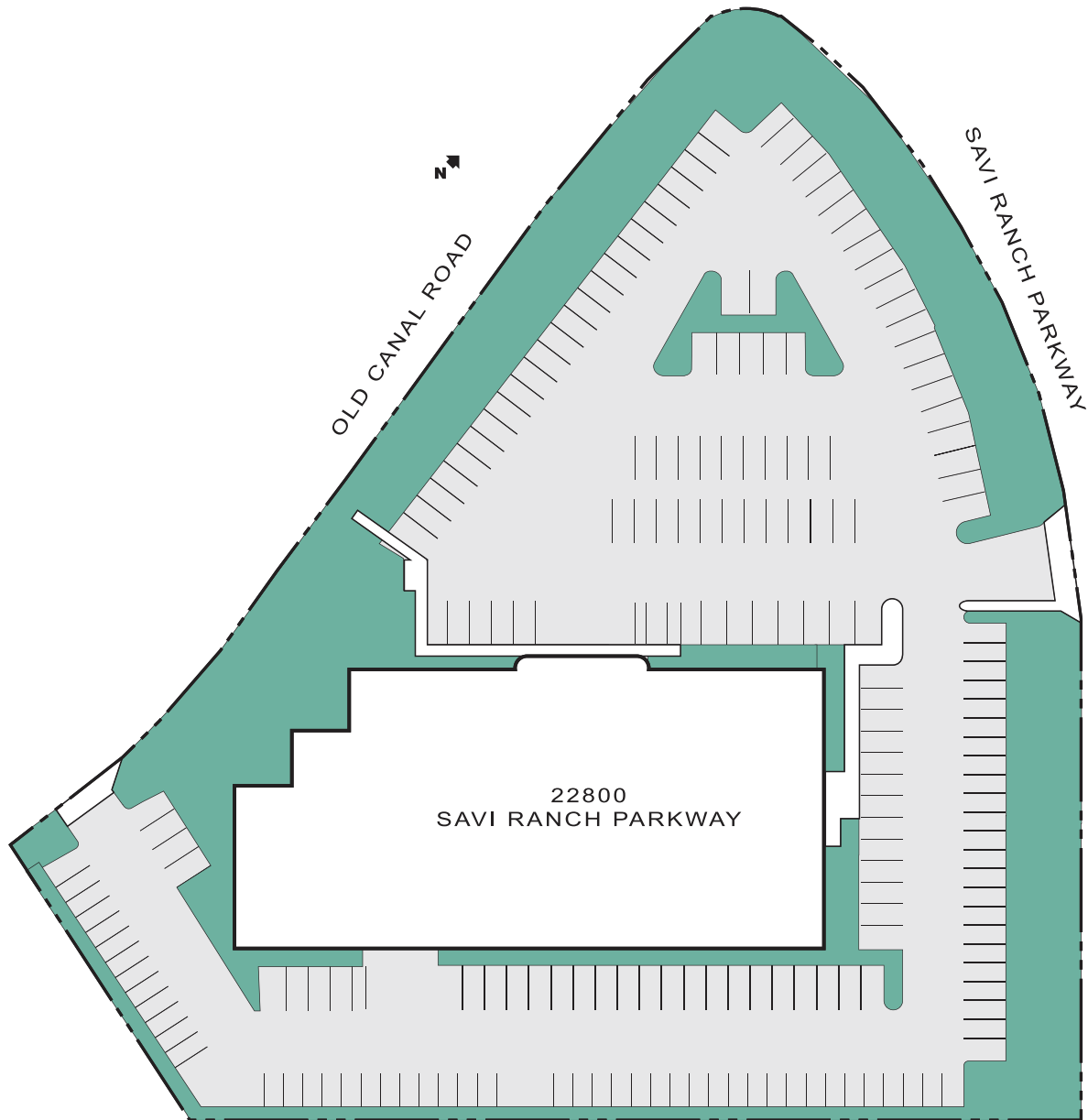
Licensed as Real Estate Salespersons by the DRE. The information contained herein has been obtained from sources we deem reliable. While we have no reason to doubt its accuracy, we do not guarantee it. ©2026 Voit Real Estate Services, Inc. All Rights Reserved. Lic #01991785.

FOR LEASE

KOLL SAVI BUSINESS CENTER

22800 SAVI RANCH PARKWAY, YORBA LINDA, CA

SITE PLAN



Voit
REAL ESTATE SERVICES

Barry Walshe
Vice President | Partner
(714) 935-2309
bwalshe@voitco.com
Lic. #01991785

2400 E. Katella Avenue, Suite 750 | Anaheim, California 92806 | (714) 978-7880 | (714) 978-9431 FAX | Lic #01991785 | www.VoitCo.com

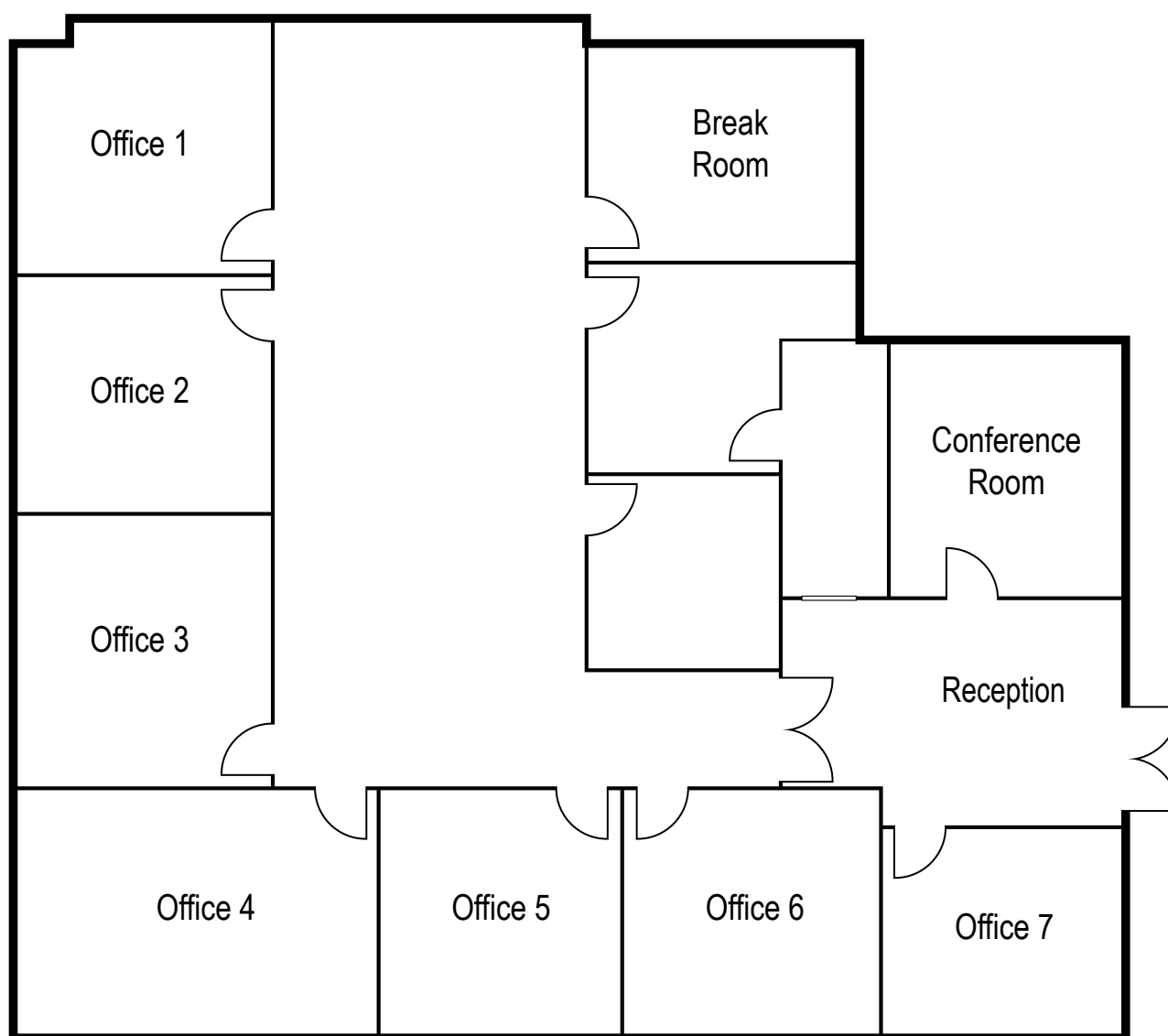
Licensed as Real Estate Salespersons by the DRE. The information contained herein has been obtained from sources we deem reliable. While we have no reason to doubt its accuracy, we do not guarantee it. ©2026 Voit Real Estate Services, Inc. All Rights Reserved. Lic #01991785.

FOR LEASE

KOLL SAVI BUSINESS CENTER

22800 SAVI RANCH PARKWAY, YORBA LINDA, CA

SUITE 200 | ±3,082



Voit
REAL ESTATE SERVICES

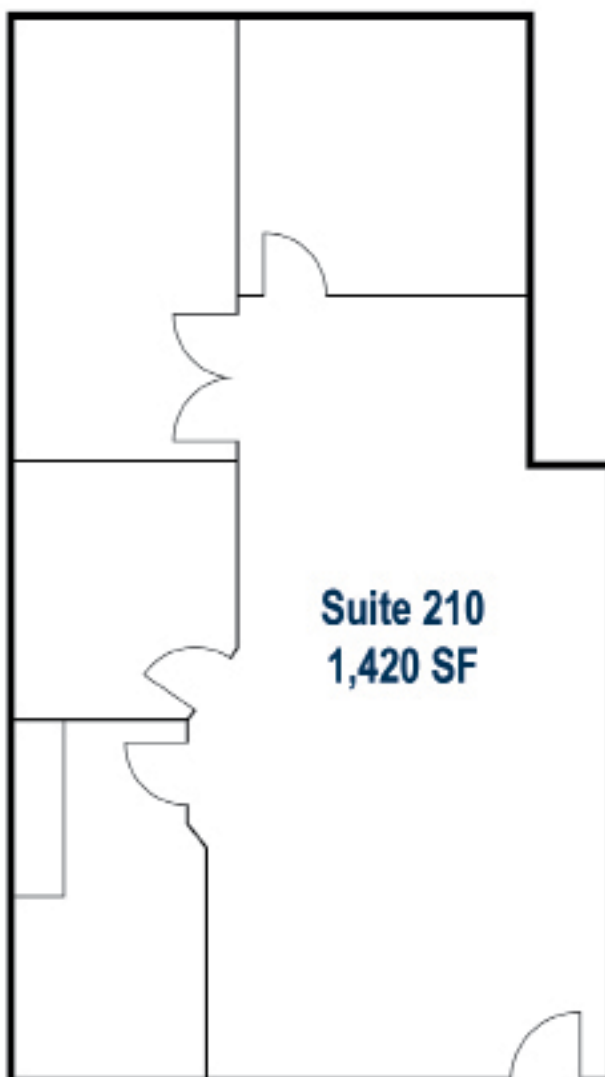
Barry Walshe
Vice President | Partner
(714) 935-2309
bwalshe@voitco.com
Lic. #01991785

FOR LEASE

KOLL SAVI BUSINESS CENTER

22800 SAVI RANCH PARKWAY, YORBA LINDA, CA

SUITE 210 | ±1,420 SF



Voit
REAL ESTATE SERVICES

Barry Walshe
Vice President | Partner
(714) 935-2309
bwalshe@voitco.com
Lic. #01991785

2400 E. Katella Avenue, Suite 750 | Anaheim, California 92806 | (714) 978-7880 | (714) 978-9431 FAX | Lic #01991785 | www.VoitCo.com

Licensed as Real Estate Salespersons by the DRE. The information contained herein has been obtained from sources we deem reliable. While we have no reason to doubt its accuracy, we do not guarantee it. ©2026 Voit Real Estate Services, Inc. All Rights Reserved. Lic #01991785.

FOR LEASE

KOLL SAVI BUSINESS CENTER

22800 SAVI RANCH PARKWAY, YORBA LINDA, CA



Voit
REAL ESTATE SERVICES

Barry Walshe
Vice President | Partner
(714) 935-2309
bwalshe@voitco.com
Lic. #01991785

2400 E. Katella Avenue, Suite 750 | Anaheim, California 92806 | (714) 978-7880 | (714) 978-9431 FAX | Lic #01991785 | www.VoitCo.com

Licensed as Real Estate Salespersons by the DRE. The information contained herein has been obtained from sources we deem reliable. While we have no reason to doubt its accuracy, we do not guarantee it. ©2026 Voit Real Estate Services, Inc. All Rights Reserved. Lic #01991785.