

COPANS BUSINESS CENTER

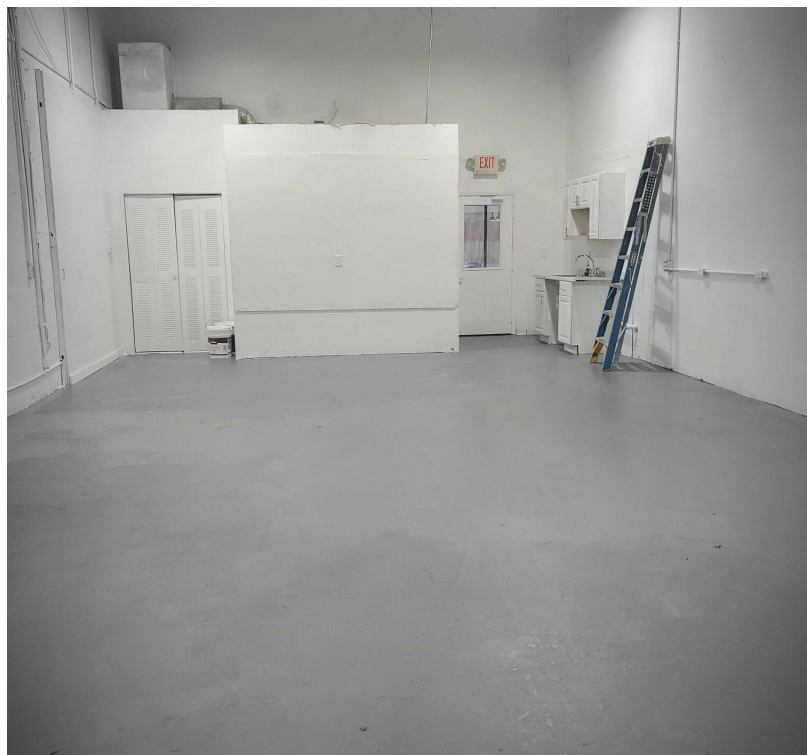
2520-2590 NORTH POWERLINE ROAD, POMPANO BEACH, FL 33069

2520 N POWERLINE RD #305



SPACE HIGHLIGHTS

- 1,840 SF
- Corner unit Newly Renovated
- Open air-conditioned office showroom area totaling 1,031 SF
- Storage
- LED lighting
- Kitchenette
- 15' clear ceiling in warehouse
- 10' x 12' grade level overhead door in the back
- Pylon Signage available



JAN STOLOW

Director of Property Management and Leasing
Direct: 954.491.5505 | Cell: 954.658.4479
jan@levyrai.com

NATALIE DELISLE

Property Manager / Sales Associate
954.678.2362
natalie@levyrai.com



FOR LEASE

COPANS BUSINESS CENTER

2520-2590 NORTH POWERLINE ROAD, POMPANO BEACH, FL 33069

CUSTOM PAGE



JAN STOLOW

Director of Property Management and Leasing
Direct: 954.491.5505 | Cell: 954.658.4479
jan@levyrai.com

NATALIE DELISLE

Property Manager / Sales Associate
954.678.2362
natalie@levyrai.com



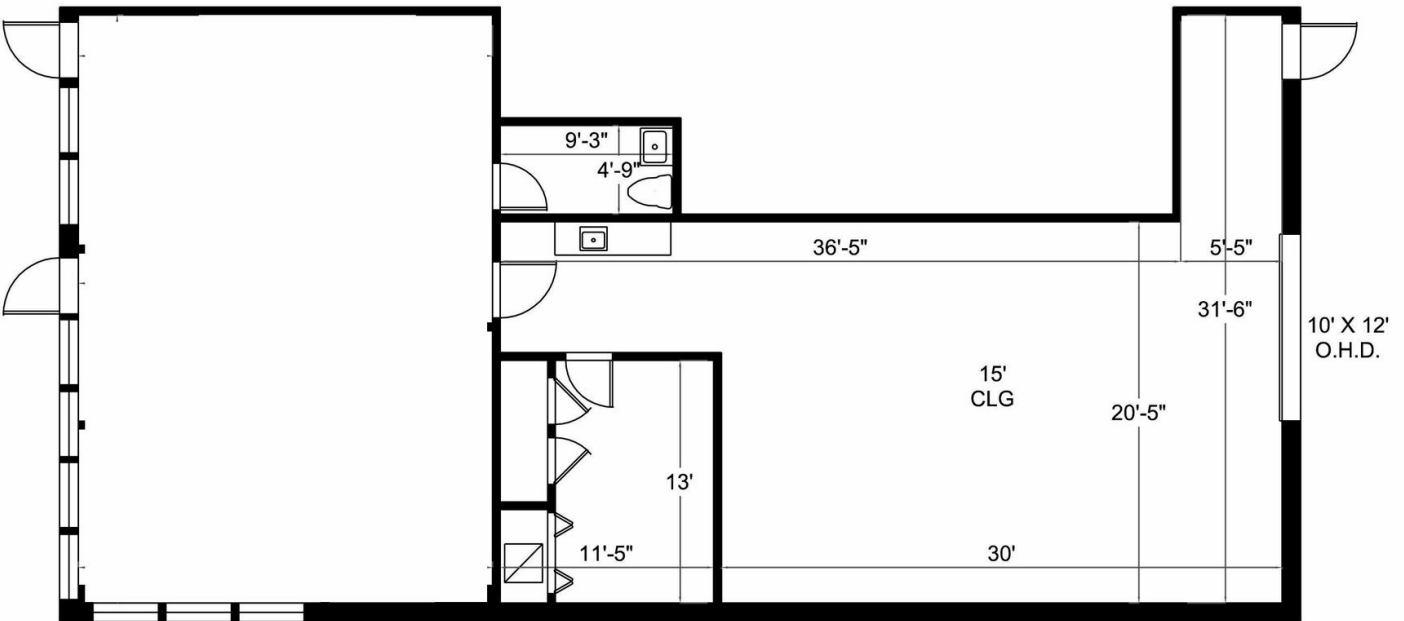
COPANS BUSINESS CENTER

2520-2590 NORTH POWERLINE ROAD, POMPANO BEACH, FL 33069

2520 N POWERLINE RD #305 FLOOR PLAN

2520 N POWERLINE ROAD

Suite 305 | Pompano Beach, FL 33069



OFFICE: 1,031 SF
WAREHOUSE: 809 SF

1,840 Rentable Sq. Ft.
www.LevyRealtyAdvisors.com

JAN STOLOW

Director of Property Management and Leasing
Direct: 954.491.5505 | Cell: 954.658.4479
jan@levyrai.com

NATALIE DELISLE

Property Manager / Sales Associate
954.678.2362
natalie@levyrai.com

