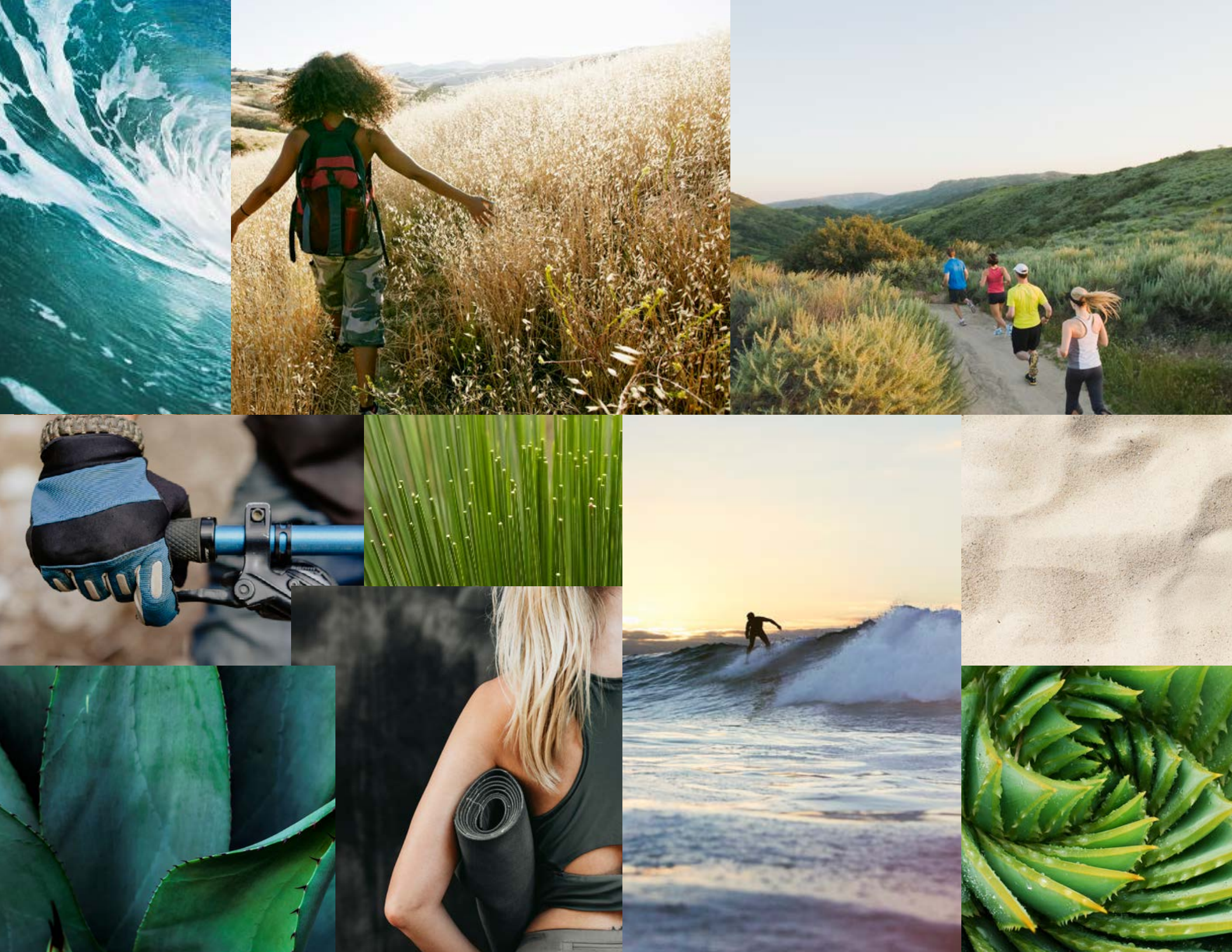




**WELLNESS
WORK
COMMUNITY**

WWW.PARKLINEAV.COM

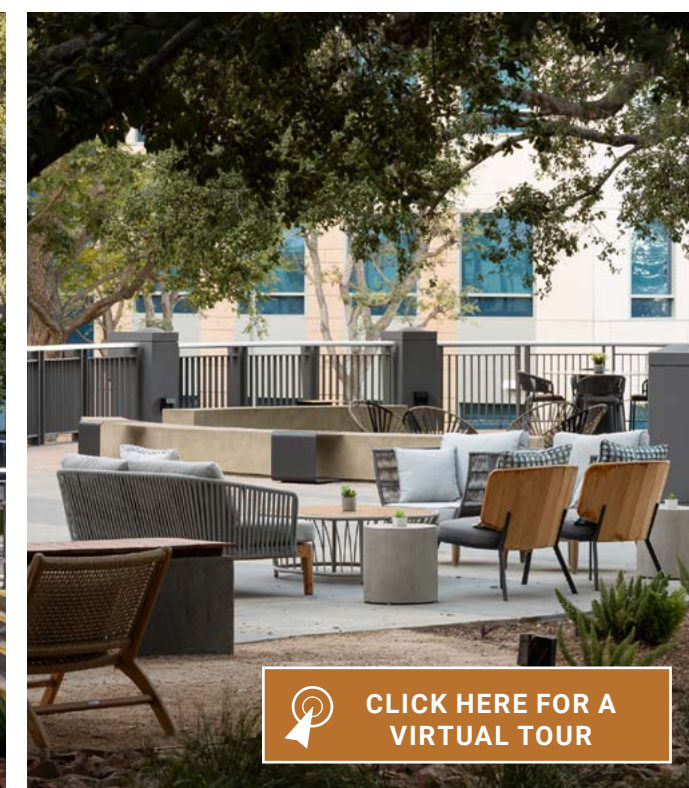
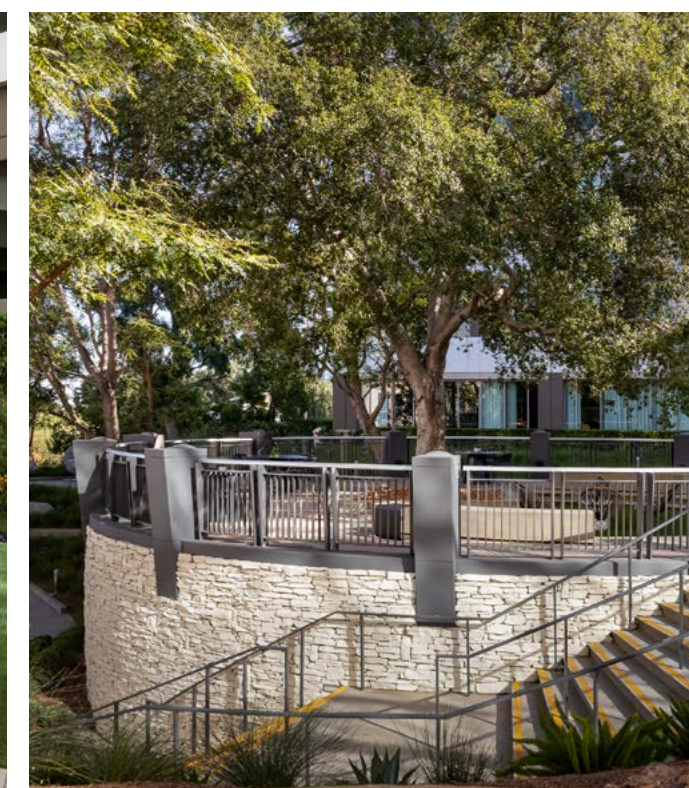
15 & 25 ENTERPRISE, ALISO VIEJO, CA 92656



Parkline is a wellness centric office campus offering lifestyle balance in the workplace for companies eager to innovate while helping protect the well-being of their people.

With a focus on extending the South Orange County lifestyle to Parkline, our new improvements include an incredible new outdoor environment - comprised of wellness and fitness areas, as well as outdoor work and social spaces.

WELLNESS
WORK
COMMUNITY



[CLICK HERE FOR A VIRTUAL TOUR](#)



±295,000 SF OF THOUGHTFUL
CLASS A OFFICE



SPEC SUITES AND FULL
FLOORS AVAILABLE NOW



STRUCTURED PARKING
+ EV CHARGING



BUILT IN 2000, RE-IMAGINED
AND ENHANCED 2023



PRIVATE OUTDOOR
TENANT PATIO POSSIBLE



HIGHLY EFFICIENT LARGE
FLOOR PLATES WITH FLOOR
TO CEILING GLASS



WELLNESS

WORK

COMMUNITY

PARKING
GARAGE

25
ENTERPRISE

COMMUNITY

WELLNESS

15
ENTERPRISE



IMMEDIATE ACCESS TO THE 73, SOUTH ORANGE COUNTY'S BUSINESS CORRIDOR AND OTHER MAJOR THOROUGHFARES



IDEAL LOCATION IN SOUTH ORANGE COUNTY - 10 MINUTES TO THE COAST AND SURROUNDED BY LIFESTYLE AMENITIES FOR YOUR EMPLOYEES



A 5 MINUTE WALK TO THE RENAISSANCE CLUBSPORT HOTEL AND FITNESS RESORT - AN UPSCALE 70,000 SF MULTI-PURPOSE SPORTS CLUB AND FOUR DIAMOND 175 ROOM BOUTIQUE HOTEL





WELLNESS

WELLNESS AT PARKLINE



WEIGHT +
FUNCTIONAL
TRAINING SPACE



BIKE STORAGE
+ REPAIR STAND



SHOWER AND
LOCKER
ROOMS



TENANT
WALKING
PATH



ON-SITE
WELLNESS
EVENTS



GROUP
EXERCISE AREA



TEAM
BUILDING
OPPORTUNITIES



OUTDOOR
RELAXATION
SPACES





WORK

Giving the workplace a new sense of purpose - tenants at Parkline will have access to a level of work flexibility with new outdoor work spaces that will offer an experience that surpasses all other South County options.





COMMUNITY



In a recent Stanford University study, working collaboratively and collectively leads to better on-the-job performance. At Parkline we value productivity and have created an environment where collaboration is fostered through our community of diverse spaces, interests, and people.



COMMUNITY LIFESTYLE AMENITIES

RENAISSANCE CLUBSPORT



HEALTHIER FOOD CHOICES



FROM PARKLINE

10 MIN

TO LAGUNA BEACH + SURFING



5 MIN

TO WATER TOWER TRAIL,
HIKING/BIKING TRAILS



3 MILES

TO ALISO AND WOOD CANYONS
WILDERNESS PARK TRAILHEADS



1 MILE

TO NUMEROUS HEALTHY EATERIES
SUCH AS URBAN PLATES
AND CHOP SHOP



WELLNESS WORK COMMUNITY

15 & 25 ENTERPRISE, ALISO VIEJO, CA 92656

CAROL TRAPANI
Senior Vice President
Lic. 01099644
+1 949 725 8603
carol.trapani@cbre.com

ALLISON KELLY
Senior Vice President
Lic. 01417664
+1 949 725 8474
allison.kelly@cbre.com



WWW.PARKLINEAV.COM

© 2022 CBRE, Inc. All rights reserved. This information has been obtained from reliable sources but has not been verified for accuracy or completeness. CBRE, Inc. makes no guarantee, representation, or warranty and accepts no responsibility or liability for the accuracy, completeness, or reliability of the information contained herein. You should conduct a careful, independent investigation of the property and verify all information. Any reliance on this information is solely at your own risk. CBRE and the CBRE logo are service marks of CBRE, Inc. All other marks displayed on this document are the property of their respective owners, and the use of such marks does not imply any affiliation with or endorsement of CBRE. Photos herein are the property of their respective owners. Use of these images without the express written consent of the owner is prohibited.



CBRE