

FIRST 3 MONTHS - \$1.50 SF/FS



Office For Lease

**660 PRICE AVE
REDWOOD CITY, CA**

Area

Unit B : ±3,314 SF

5 Conference Rooms, 1 Reception, 2 Storage, 2 Restrooms, Lunch/Kitchen Room with Sink, and 1 Edit/Copy/TP Room

Lunch + Conference Room- Furniture Included

Unit C : ±1,752 SF

2 Private Offices, 1 New Private ADA Restroom Conference Area, Lunch Room with Counter and Sink

Unit B and C can be Combined

Rental Rate

\$2.95 SF/FS

First Three Months: \$1.50 SF/FS

Property Highlights

- Ample Parking, Parcel Size: 19,969 SF
- Renovated Office Space
- New HVAC Unit
- Great Access to Highway 101 & Downtown Redwood City

For information, please contact:

John Weatherby

Senior Managing Director

t 650-358-5269

p 650-207-1317

john.weatherby@nmrk.com

CA RE License #00640295

Deborah O'Reilly

Director

t 650-358-5256

p 650-784-3426

deborah.oreilly@nmrk.com

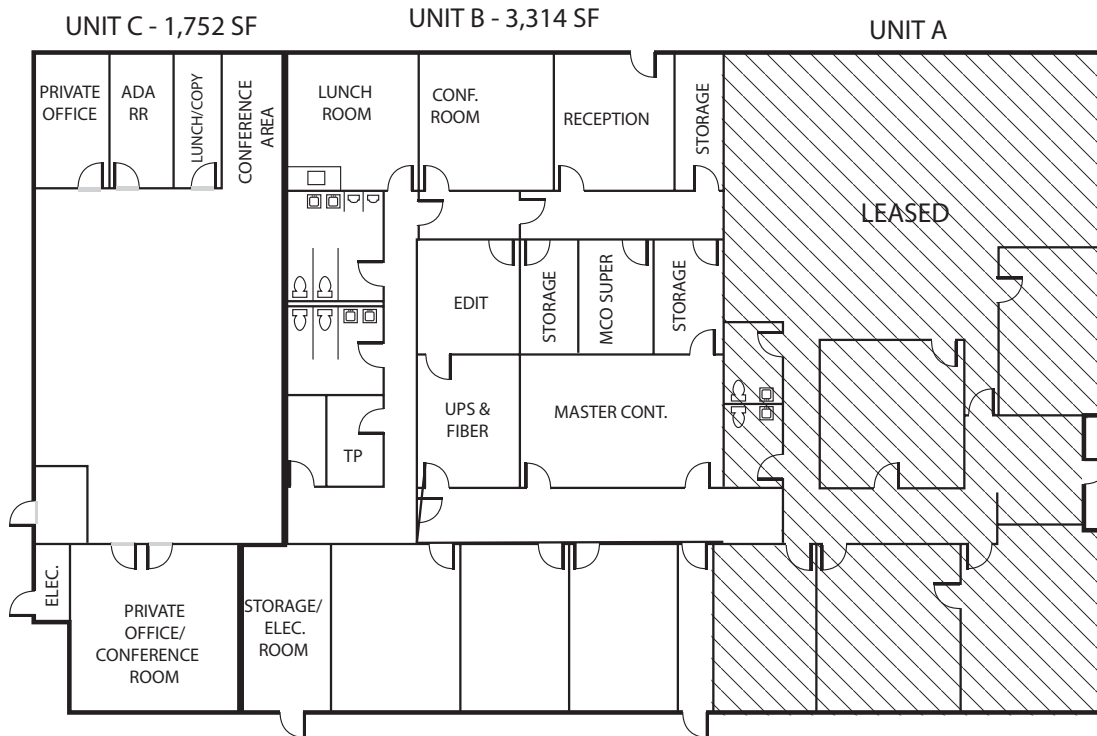
CA RE License #01895522

nmrk.com

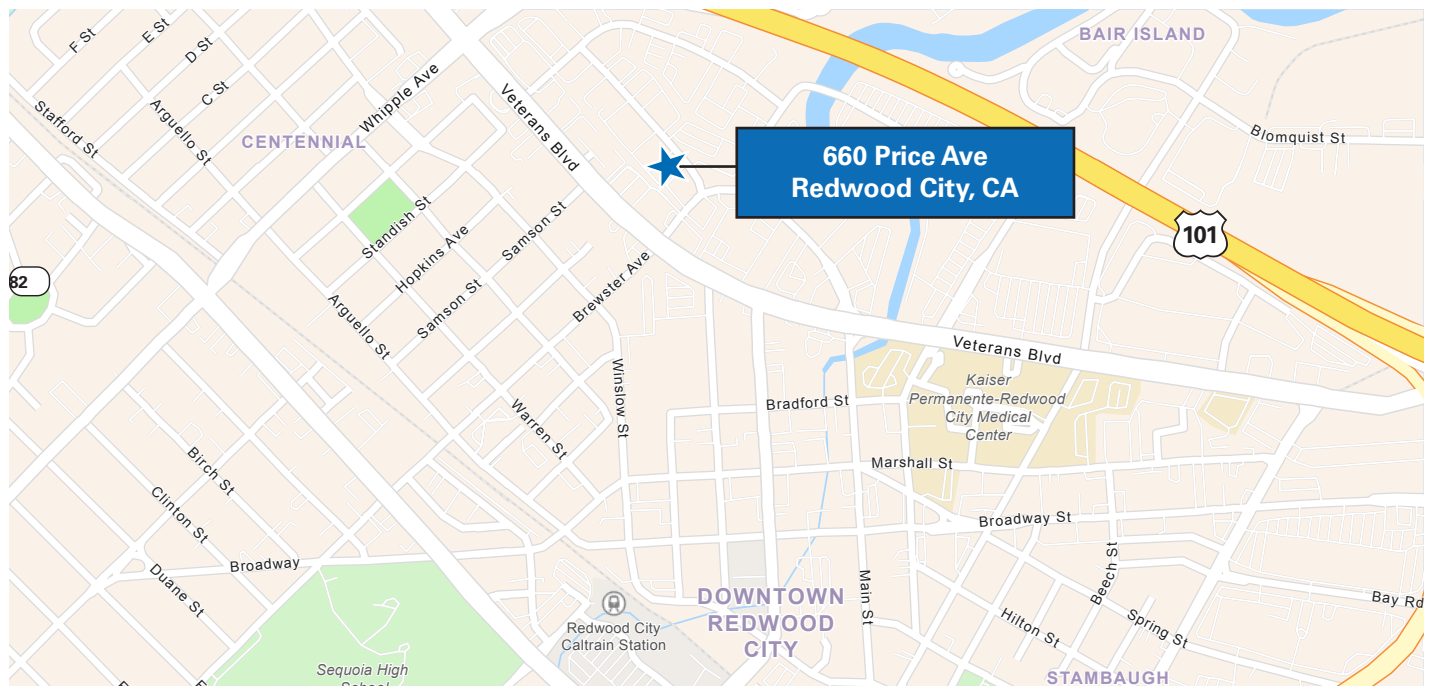
NEWMARK

The information contained herein has been obtained from sources deemed reliable but has not been verified and no guarantee, warranty or representation, either express or implied, is made with respect to such information. Terms of sale or lease and availability are subject to change or withdrawal without notice.

Floor Plan



Location Map



For information, please contact:

John Weatherby
 Senior Managing Director
 t 650-358-5269
 p 650-207-1317
 john.weatherby@nmrk.com
 CA RE License #00640295

Deborah O'Reilly
 Director
 t 650-358-5256
 p 650-784-3426
 deborah.oreilly@nmrk.com
 CA RE License #01895522

nmrk.com



The information contained herein has been obtained from sources deemed reliable but has not been verified and no guarantee, warranty or representation, either express or implied, is made with respect to such information. Terms of sale or lease and availability are subject to change or withdrawal without notice.

Unit B - Photos



For information, please contact:

John Weatherby

Senior Managing Director

t 650-358-5269

p 650-207-1317

john.weatherby@nmrk.com

CA RE License #00640295

Deborah O'Reilly

Director

t 650-358-5256

p 650-784-3426

deborah.oreilly@nmrk.com

CA RE License #01895522

nmrk.com

NEWMARK

The information contained herein has been obtained from sources deemed reliable but has not been verified and no guarantee, warranty or representation, either express or implied, is made with respect to such information. Terms of sale or lease and availability are subject to change or withdrawal without notice.

Unit C - Photos



For information, please contact:

John Weatherby

Senior Managing Director

t 650-358-5269

p 650-207-1317

john.weatherby@nmrk.com

CA RE License #00640295

Deborah O'Reilly

Director

t 650-358-5256

p 650-784-3426

deborah.oreilly@nmrk.com

CA RE License #01895522

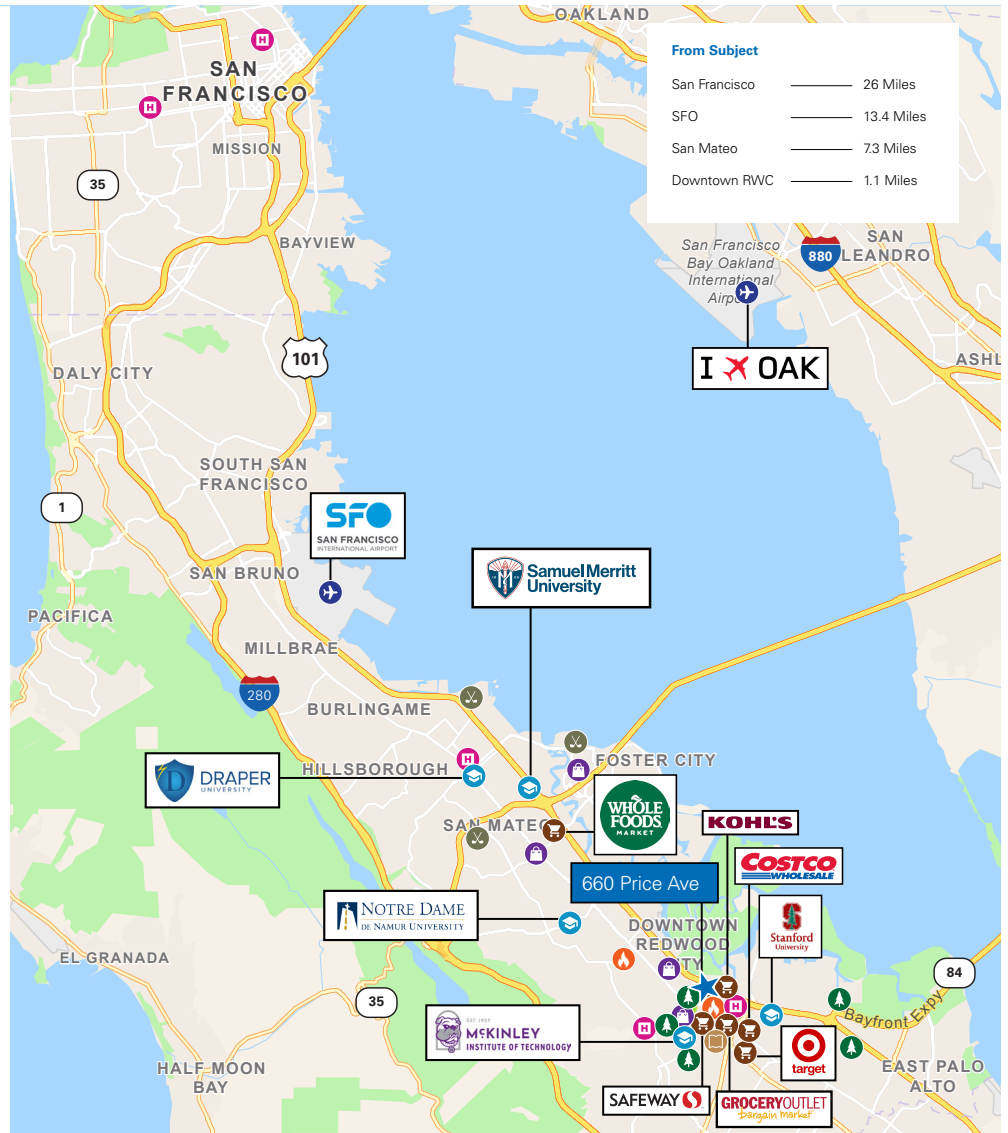
nmrk.com

NEWMARK

The information contained herein has been obtained from sources deemed reliable but has not been verified and no guarantee, warranty or representation, either express or implied, is made with respect to such information. Terms of sale or lease and availability are subject to change or withdrawal without notice.

Amenities Map

- TOP SCHOOLS**
 - Draper University
 - Samuel Merritt University
 - Notre Dame de Namur University
 - Stanford University | Redwood City
 - McKinley Institute of Technology
- GOLF COURSES**
 - Mariners Point Golf Center
 - The Peninsula Golf & Country Club
 - Poplar Creek Golf Course
- FIRE STATIONS**
 - Redwood City Fire Department- Station 9
 - San Carlos Fire Department
- HOSPITALS & HEALTHCARE**
 - Dignity Health Sequoia Hospital
 - Kaiser Permanente Redwood City Medical Center
 - San Mateo hospital
 - UCSF Health St. Mary's Hospital
 - Chinese Hospital
- PUBLIC LIBRARY**
 - Sunnyvale Public Library
- PARKS, TRAILS & GREEN SPACE**
 - Red Morton Park
 - Bedwell Bayfront Park
 - Flood Park
 - Mezes Park
 - Stafford Park
- GROCERY STORES**
 - Kohl's
 - Safeway
 - Grocery Outlet
 - Target
 - Costco
 - Whole Foods Market
- AIRPORTS**
 - San Francisco International Airport
 - Oakland International Airport
- SHOPPING CENTERS/ RETAIL**
 - San Carlos Marketplace
 - Sequoia Station
 - Hillsdale Shopping Center
 - Bridgepointe Shopping Center



For information, please contact:

John Weatherby
 Senior Managing Director
 t 650-358-5269
 p 650-207-1317
 john.weatherby@nmrk.com
 CA RE License #00640295

Deborah O'Reilly
 Director
 t 650-358-5256
 p 650-784-3426
 deborah.oreilly@nmrk.com
 CA RE License #01895522

nmrk.com