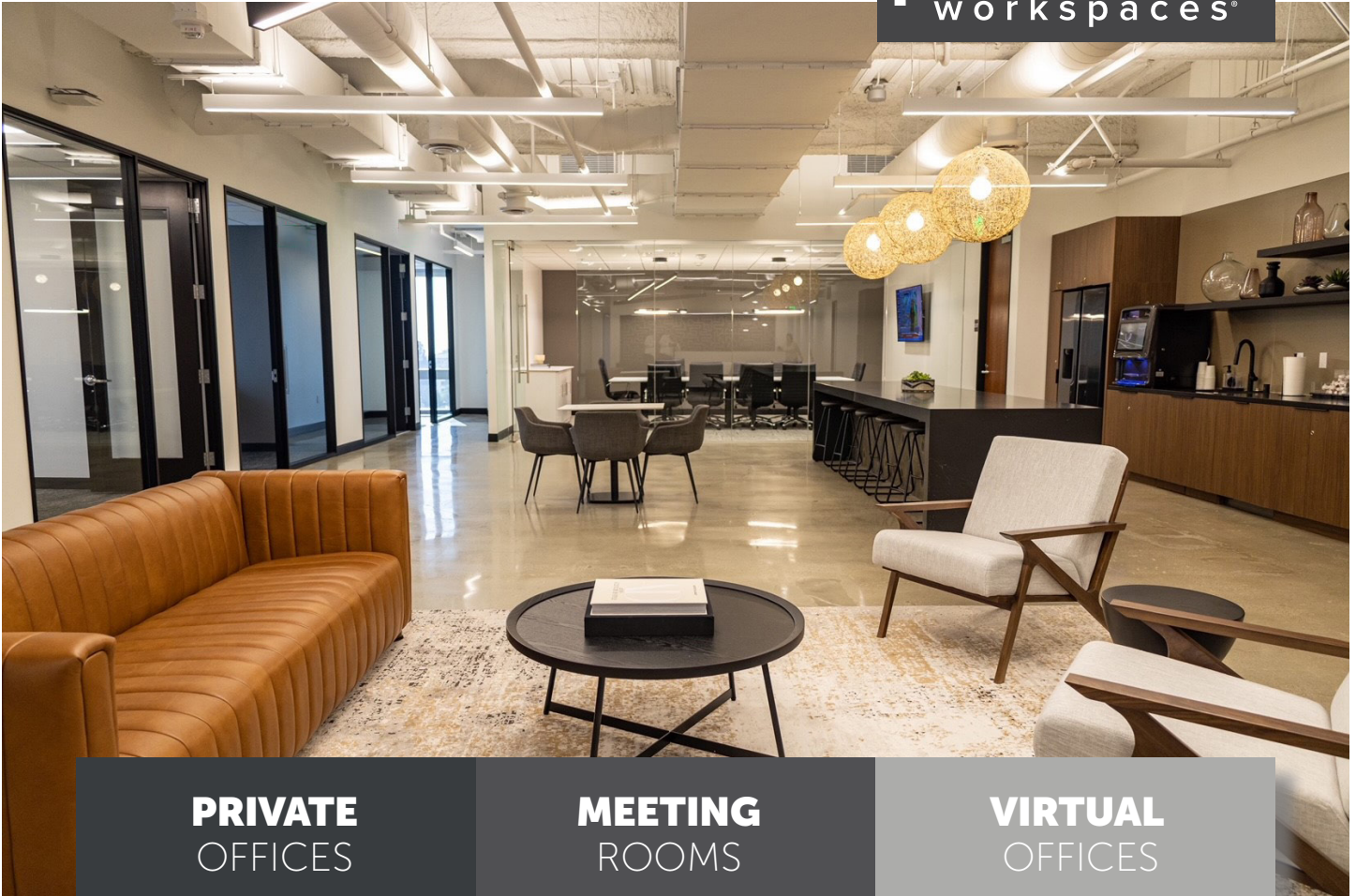


# 301 North Lake

301 N Lake Avenue, Suite 600, Pasadena, CA 91101



## PRIVATE OFFICES

Highly professional private offices for individuals and teams that are flexible and scaled for growth.

## MEETING ROOMS

Spacious, well-appointed meeting rooms with on-site administrative support. Available for an hour, day or longer.

## VIRTUAL OFFICES

Establish a business presence with mail handling, phone answering or meeting room time.

## ABOUT THIS LOCATION

Located within the core of Pasadena's business district, adjacent to METRO L Line (Gold) Lake Station, our 301 N Lake location offers an ideal location for coworking, private office rentals, a virtual office, a professional meeting space rental or any other business need. From the 6th floor, your office will have unobstructed views of the San Gabriel Mountains.

## CONTACT US

Let's touch base! Contact the on-site General Manager at 626-269-8900 or [301manager@premierworkspaces.com](mailto:301manager@premierworkspaces.com) to schedule a tour.



# 301 North Lake

301 N Lake Avenue, Suite 600, Pasadena, CA 91101



## PREMIER AMENITIES

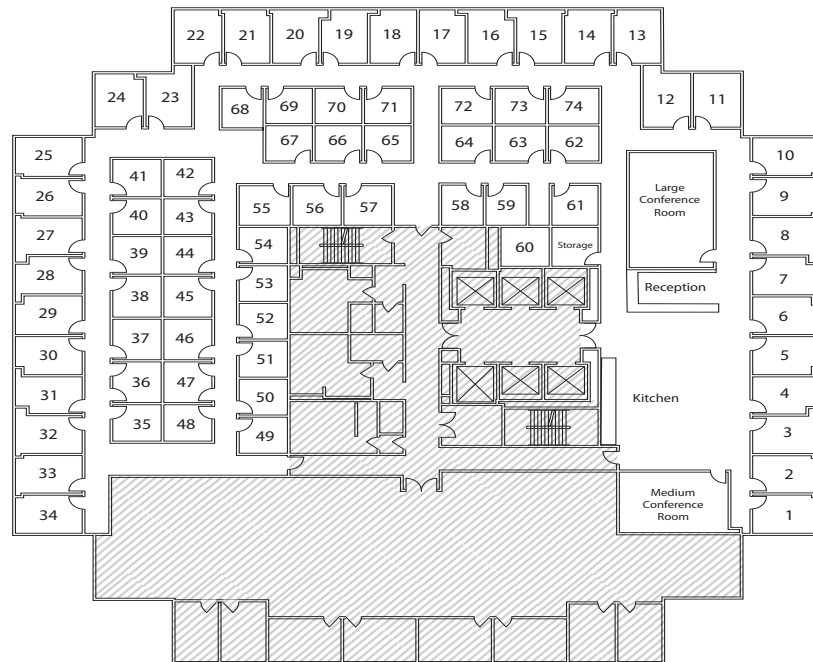
Our private suites can be easily customized to fit your desired aesthetic and brand.

- Private Offices
- Team Rooms
- High Speed Internet
- Telephone Answering
- Mail Collection
- Equipped Kitchen
- Day Offices
- Meeting Rooms
- Daily Janitorial
- Furnished or Unfurnished

## PREMIER DIFFERENCE

We've been perfecting the professional workspace for over 20 years.

- Highly-Professional Atmosphere
- On-Site Manager & Support Staff
- Scalable Solutions for Individuals and Teams
- On-Site Billing
- 90+ Locations Nationwide



## NEARBY AMENITIES

Located within the core of Pasadena's business district, adjacent to METRO L Line (Gold) Lake Station, our 301 N Lake location offers unobstructed mountain views to the north and surrounding Pasadena skyline.

### Nearby Amenities:

- Unparalleled access to the 210 Freeway and Metro Gold Line Lake Station
- Walking distance of 89 with abundant restaurant and retail amenities in close proximity
- Rose Bowl Stadium
- The Pasadena Courthouse
- Pasadena Farmer's Markets

### Building Amenities:

- Direct building access from subterranean parking levels
- EV Charging Station
- 24-Hour Security

## CONTACT US

Let's touch base! Contact the on-site General Manager at 626-269-8900 or [301manager@premierworkspaces.com](mailto:301manager@premierworkspaces.com) to schedule a tour.