

FOR SALE | \$1,575,000

Former Bank Branch For Sale

4747 HAGGERTY RD WEST BLOOMFIELD, MI

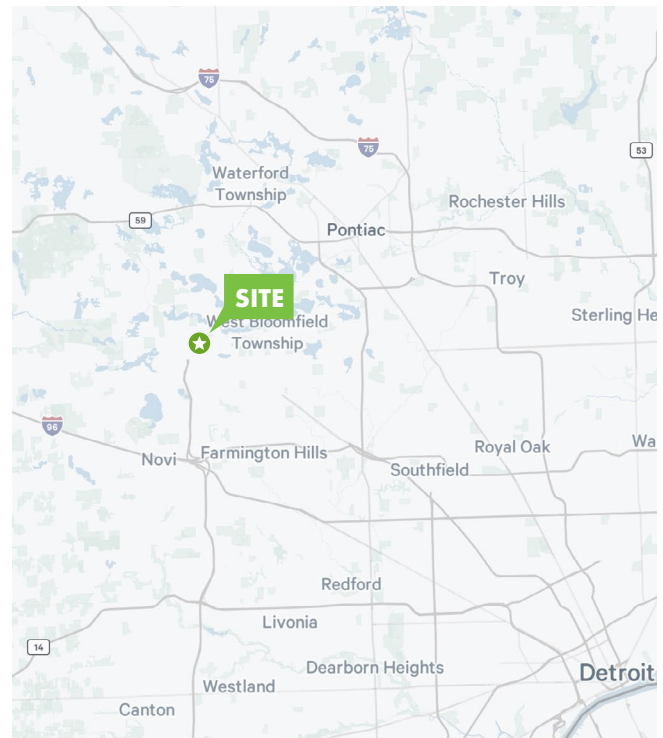
RETAIL

AVAILABLE SEPTEMBER 2026



PROPERTY INFO

- + 4,122 SF
- + Year Built –2008
- + 1.95 acres
- + 2025 R. E. Taxes - \$30,338.40
- + Located on Haggerty Road, just north of Pontiac Trail
- + Exceptional West Bloomfield Township location
- + Free standing building with excellent signage
- + 24 parking spaces, parking ratio of 5.82 / 1,000
- + Zoned B-1 Local Business District in West Bloomfield Township
- + Major commercial corridor of West Bloomfield
- + Traffic Counts: - Haggerty Road– 19,774 VPD
- + - Pontiac Trail – 27,127 VPD
- + Potential for either redevelopment or adaptive / reuse
- + DO NOT CONTACT BANK EMPLOYEES DURING BUSINESS OPERATIONS



CONTACT INFO

Dave Long

First Vice President
+1 248 351 2051
dave.long@cbre.com

www.cbre.com/detroit

CBRE

FOR SALE | \$1,575,000

Former Bank Branch For Sale

4747 HAGGERTY RD WEST BLOOMFIELD, MI

RETAIL

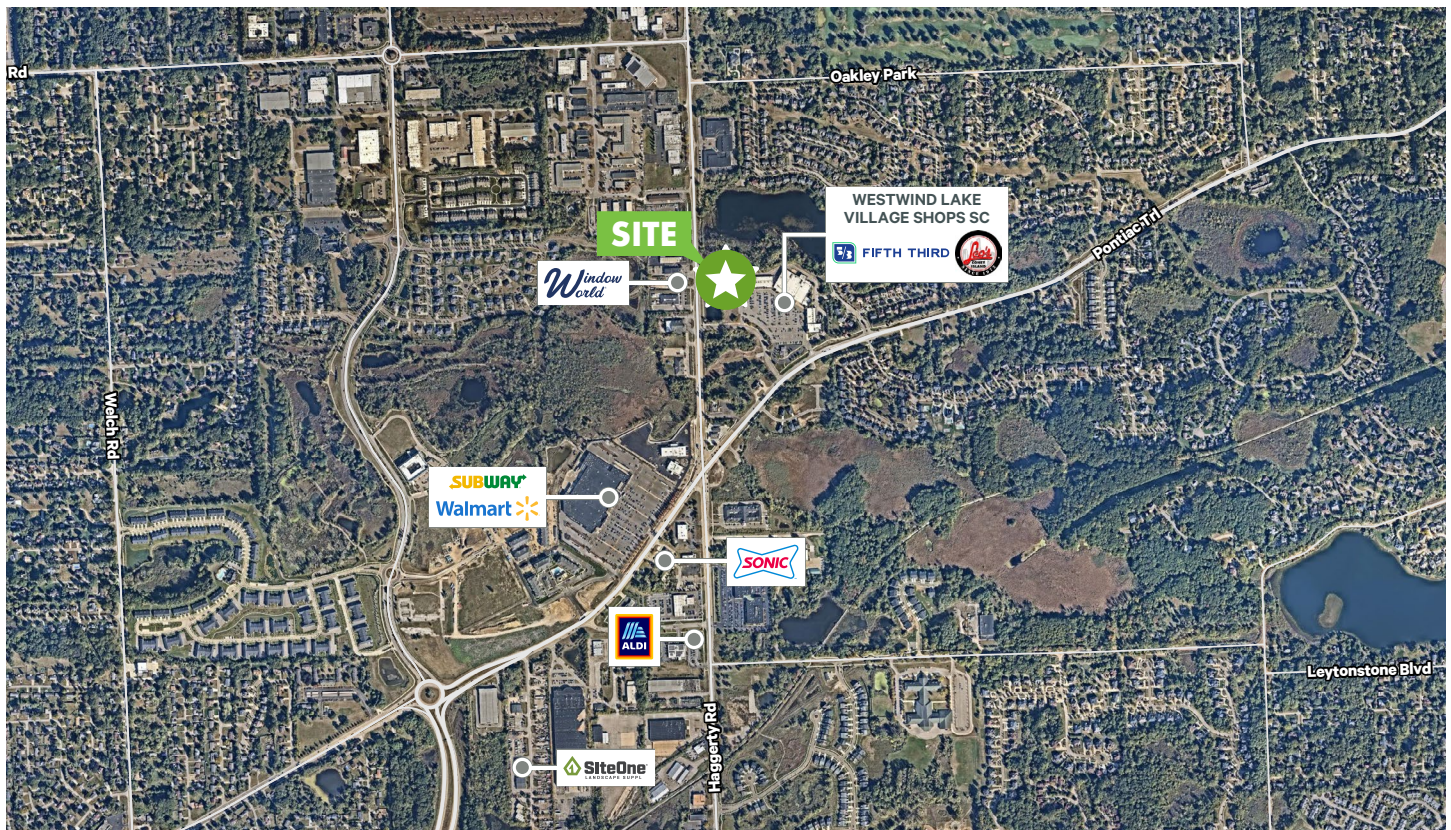
AVAILABLE SEPTEMBER 2026

PROPERTY INFO

- + Exceptional adaptive reuse opportunity in West Bloomfield Township
- + Out parcel to the Westwind Lake Village Shops
- + Cross access to Pontiac Trail
- + Outstanding speed to market opportunity
- + Limited available, free-standing retail buildings in the market
- + Ideal opportunity for multiple types of uses
- + Highly sought after trade area
- + Diverse trade area population base

Exceptional Demographics in a 3-Mile Radius

Businesses	1,827
Employees	20,653
Population	53,868
Households	22,255
Avg. HH Income	\$155,518



CONTACT INFO

Dave Long

First Vice President

+1 248 351 2051

dave.long@cbre.com

www.cbre.com/detroit

CBRE

FOR SALE | \$1,575,000

Former Bank Branch For Sale

4747 HAGGERTY RD WEST BLOOMFIELD, MI

RETAIL

AVAILABLE SEPTEMBER 2026



PROPERTY INFO

- + Speed to market opportunity in sought after trade area
- + Large parcel and free-standing building with excellent street visibility
- + Close proximity to major retail, health care and employment clusters
- + Excellent opportunity in a tight market with significant barriers to entry
- + Strategic location to service Oakland County

CONTACT INFO

Dave Long

First Vice President
+1 248 351 2051
dave.long@cbre.com

© 2026 CBRE, Inc. All rights reserved. This information has been obtained from sources believed reliable, but has not been verified for accuracy or completeness. You should conduct a careful, independent investigation of the property and verify all information. Any reliance on this information is solely at your own risk. CBRE and the CBRE logo are service marks of CBRE, Inc. All other marks displayed on this document are the property of their respective owners. Photos herein are the property of their respective owners. Use of these images without the express written consent of the owner is prohibited.

www.cbre.com/detroit

