



**8-10  
Ingate Place**  
Industrial /  
warehouse  
to let  
**5,341 - 11,454 sq. ft.**

**Battersea**  
SW8

[www.houstonlawrence.co.uk](http://www.houstonlawrence.co.uk)

To let

## 8-10 Ingate Place, SW8

11,454 sq. ft. of self-contained warehouse and office space across two units.



5,341 -11,454 sq.ft.



Battersea.



Parking on-site.



Loading area.



1 Roller shutter installed.



Queenstown Road (2 mins).



Battersea Power station (12 mins).



Sendero / Nostos (3 mins walk).



3 phase power.



Electric charging points.



5m Eaves height.

Get in touch

hello@houstonlawrence.co.uk  
www.houstonlawrence.co.uk



# 8-10 Ingate Place

Battersea SW8 3NS

Industrial /  
Warehouse /  
Office space.

5,341 - 11,454 sq. ft.

Unit 8  
6,113 sq. ft.

Unit 10  
5,341 sq. ft.

Units 8 & 10  
11,454 sq. ft.

Get in touch

[hello@houstonlawrence.co.uk](mailto:hello@houstonlawrence.co.uk)  
[www.houstonlawrence.co.uk](http://www.houstonlawrence.co.uk)



Contact:

**George Rowling**

[George@houstonlawrence.co.uk](mailto:George@houstonlawrence.co.uk)  
07806 853 718

**Will Edgley**

[will.edgley@levyrealstate.co.uk](mailto:will.edgley@levyrealstate.co.uk)  
07748 286 333

[www.houstonlawrence.co.uk](http://www.houstonlawrence.co.uk)  
[hello@houstonlawrence.co.uk](mailto:hello@houstonlawrence.co.uk)

Offices:

Wandsworth

020 7924 4476  
10 Enterprise Way  
SW18 1FZ

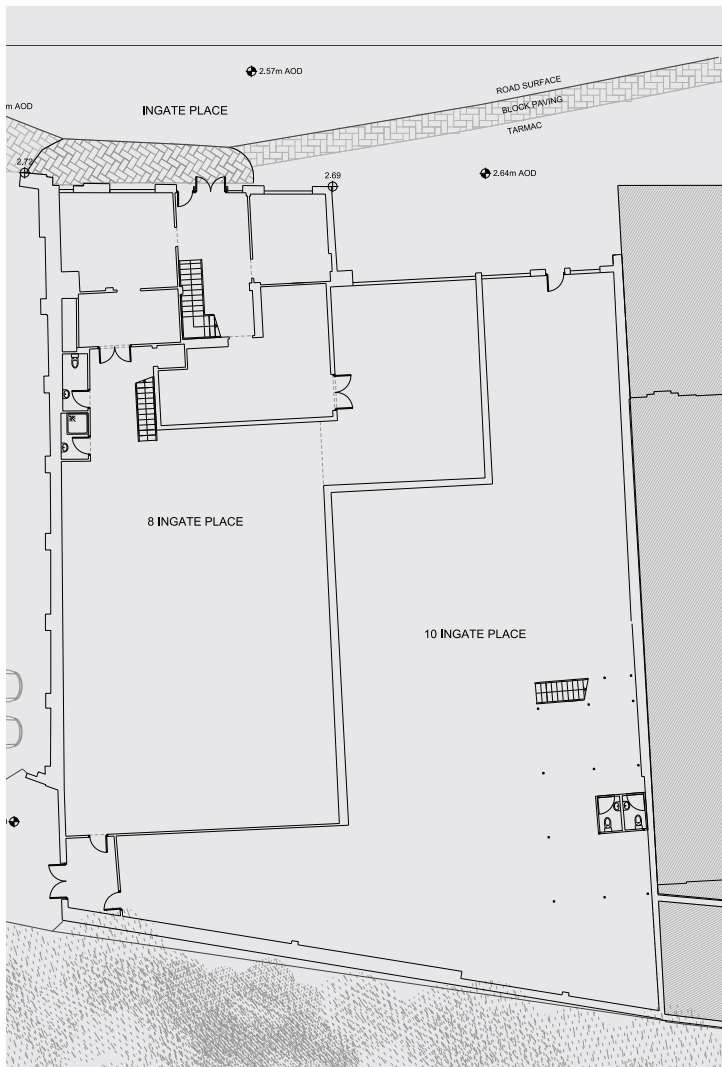
Wimbledon

020 8947 5050  
11 Alexandra Road  
SW19 7JZ

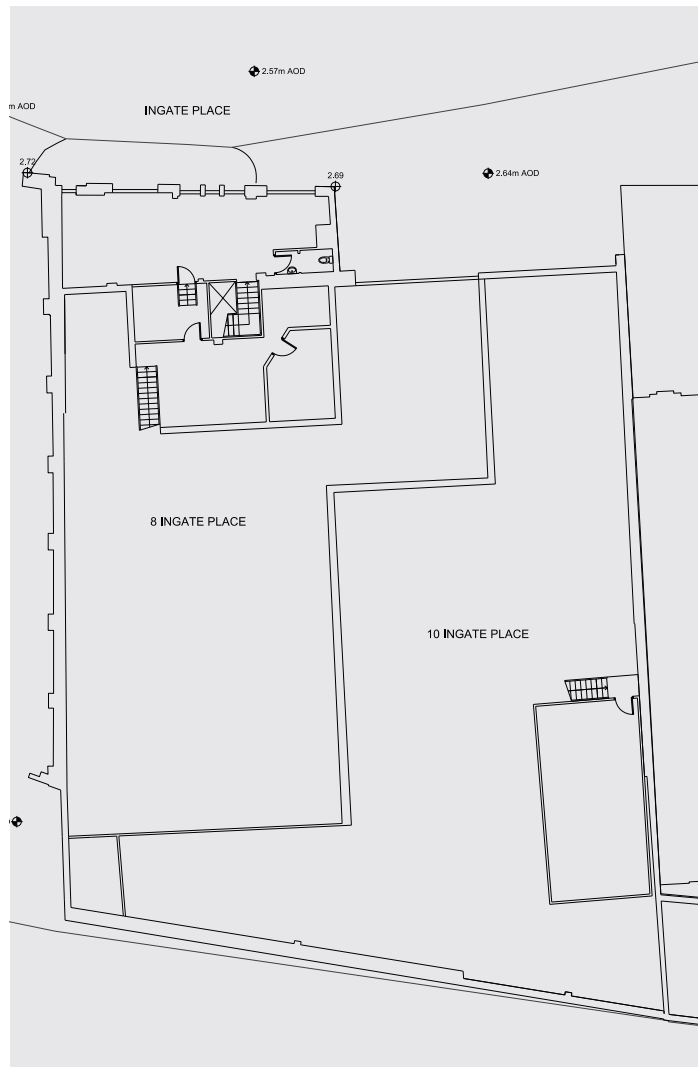
MISREPRESENTATION ACT, 1967. Houston Lawrence for themselves and for the Lessors, Vendors or Assignors of this property whose agents they are, give notice that: These particulars do not form any part of any offer or contract: the statements contained therein are issued without responsibility on the part of the firm or their clients and therefore are not to be relied upon as statements or representations of fact: any intending tenant or purchaser must satisfy himself as to the correctness of each of the statements made herein: and the vendor, lessor or assignor does not make or give, and neither the firm or any of their employees have any authority to make or give, any representation or warranty whatever in relation to this property. VAT may be applicable to the terms quoted above.

 **Houston  
Lawrence**

# To let



Ground floor plan



First floor plan

**Contact:**

**George Rowling**

[George@houstonlawrence.co.uk](mailto:George@houstonlawrence.co.uk)

07806 853 718

**Will Edgley**

[will.edgley@levyrealstate.co.uk](mailto:will.edgley@levyrealstate.co.uk)

07748 286 333