



FOR SUBLEASE

13,305 SF ON 5 ACRES | MULTI-TENANT OPTIONS AVAILABLE

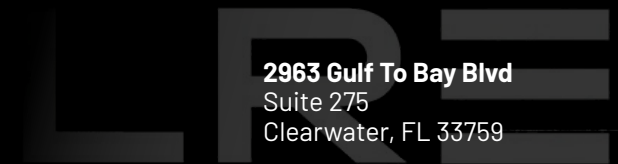
6009 & 6015 15th St E, Bradenton, FL 34203

JASON MCCORMICK, Senior Associate

+1(561)-613-5293

Jason@LoberRealEstate.com

2963 Gulf To Bay Blvd
Suite 275
Clearwater, FL 33759



FOR SUBLEASE

13,305 SF ON 5 ACRES | MULTI-TENANT OPTIONS AVAILABLE

LOBER
REAL ESTATE

6009 & 6015 15TH ST E, BRADENTON, FL 34203

PROPERTY OVERVIEW



±13,300 SF
BUILDING SIZE



±5.0 AC
USABLE YARD



7,000 SF ON 2.0 AC
MULTI-TENANT OPTIONS



6,305 SF ON 3.0 AC
MULTI-TENANT OPTIONS



PROPERTY DETAILS

LOCATION

ADDRESS	6009 & 6015 15th St E, Bradenton, FL 34203 - Maps Link Here
SUBMARKET / COUNTY	Sarasota-Bradenton, FL

BUILDING

BUILDING SIZE	6009: 7,000 SF (~3,000 SF of office) 6015 (main): 4,305 SF (~800 SF of office) 6015: Two 1,000 SF Storage Warehouses
LOADING	Eight (8) Grade-Level Doors
CLEAR HEIGHT	14 -16 Ft
POWER	3 Phase 400 Amps 208 Volts
FEATURES	Fully Fenced with Three (3) Gated Access Points

SITE

LOT SIZE	5.93 Acres (±5.0 Usable Acres)
----------	--------------------------------

ZONING & USE

ZONING	HC (Heavy Commercial)
PERMITTED USES	Light manufacturing and assembly, bulk warehousing and distribution facilities, wholesale operations, contractor yards, heavy equipment sales/rental and repair, construction-related services, trucking and logistics operations.

AVAILABILITY

DATE AVAILABLE	NOW!
LEASE TERMS	Call Broker for Pricing / Details

JASON MCCORMICK, Senior Associate

+1(561)-613-5293

Jason@LoberRealEstate.com

RE

FOR SUBLEASE

13,305 SF ON 5 ACRES | MULTI-TENANT OPTIONS AVAILABLE

LOBER
REAL ESTATE

6009 & 6015 15TH ST E, BRADENTON, FL 34203

PROPERTY FEATURES



JASON MCCORMICK, Senior Associate

+1(561)-613-5293

Jason@LoberRealEstate.com

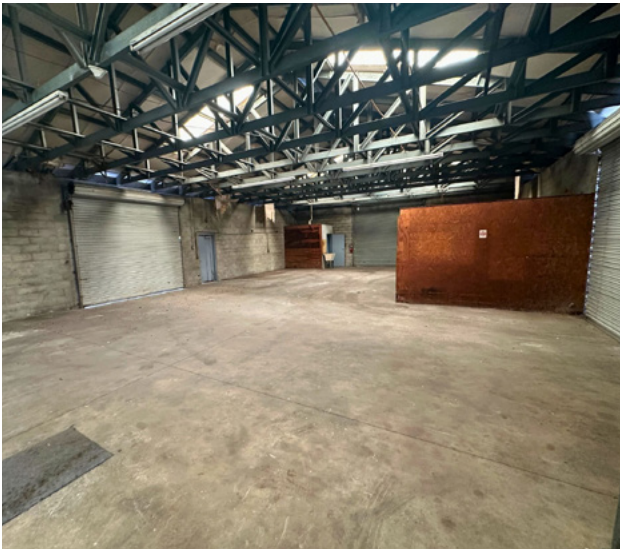
FOR SUBLEASE

13,305 SF ON 5 ACRES | MULTI-TENANT OPTIONS AVAILABLE

LOBER
REAL ESTATE

6009 & 6015 15TH ST E, BRADENTON, FL 34203

PROPERTY PHOTOS - BLDG 6009



JASON MCCORMICK, Senior Associate

+1(561)-613-5293

Jason@LoberRealEstate.com

RE

FOR SUBLEASE

13,305 SF ON 5 ACRES | MULTI-TENANT OPTIONS AVAILABLE

LOBER
REAL ESTATE

6009 & 6015 15TH ST E, BRADENTON, FL 34203

PROPERTY PHOTOS - BLDG 6015



JASON MCCORMICK, Senior Associate

+1(561)-613-5293

Jason@LoberRealEstate.com

RE

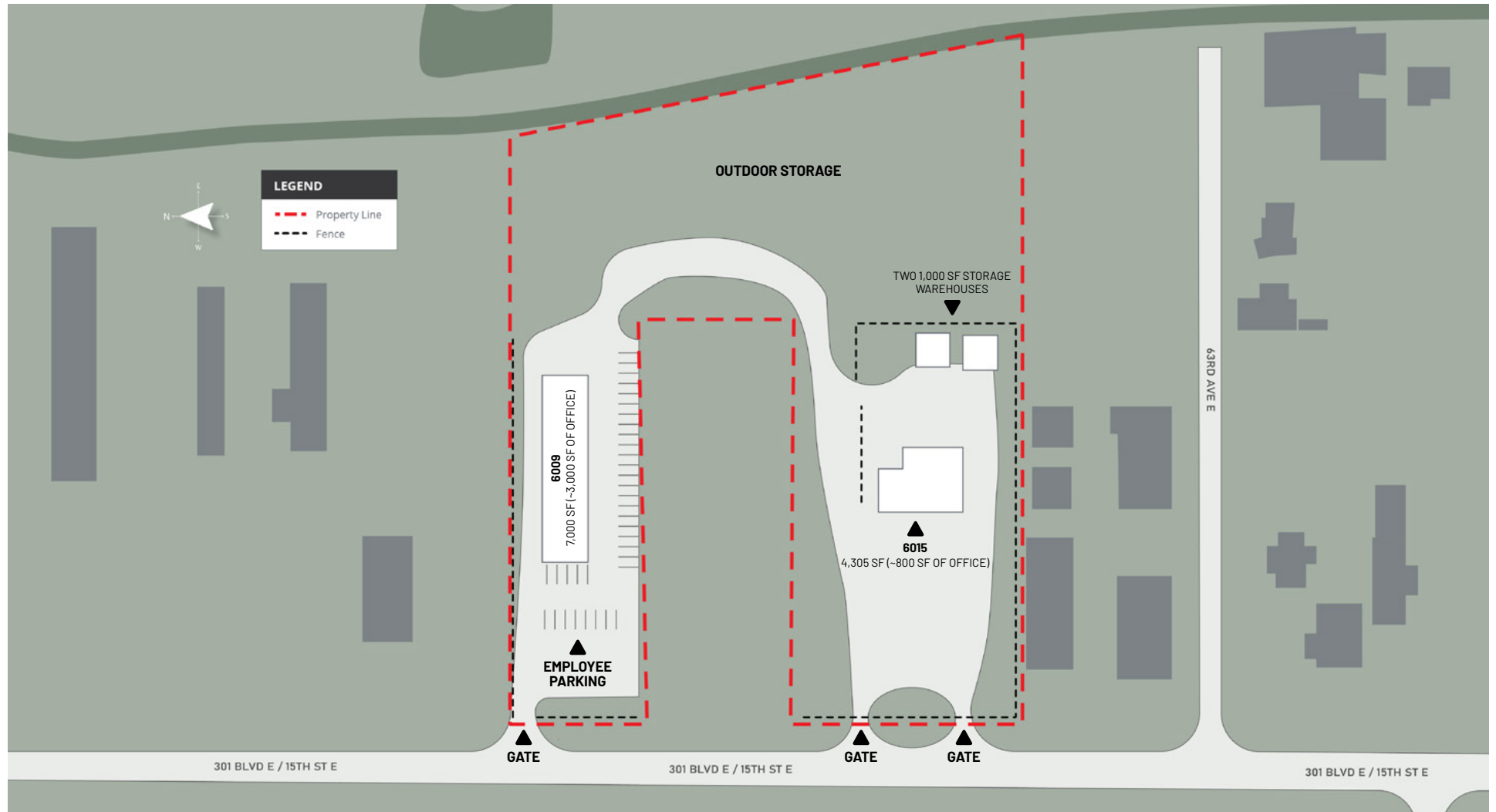
FOR SUBLEASE

13,305 SF ON 5 ACRES | MULTI-TENANT OPTIONS AVAILABLE

LOBER
REAL ESTATE

6009 & 6015 15TH ST E, BRADENTON, FL 34203

SITE PLAN



JASON MCCORMICK, Senior Associate

+1(561)-613-5293

Jason@LoberRealEstate.com

FOR SUBLEASE

13,305 SF ON 5 ACRES | MULTI-TENANT OPTIONS AVAILABLE

LOBER
REAL ESTATE

6009 & 6015 15TH ST E, BRADENTON, FL 34203

NEIGHBORING TENANTS



JASON MCCORMICK, Senior Associate

+1(561)-613-5293

Jason@LoberRealEstate.com

FOR SUBLEASE

13,305 SF ON 5 ACRES | MULTI-TENANT OPTIONS AVAILABLE

LOBER
REAL ESTATE

6009 & 6015 15TH ST E, BRADENTON, FL 34203

LOCATION MAP

SUNSHINE SKYWAY BRIDGE

22.0 MI 44 MIN

PORT MANATEE

23.6 MI 40 MIN

CSX TRAIN BRIDGE

7.2 MI 25 MIN

GREEN BRIDGE

7.1 MI 26 MIN

TROOPER J.D. YOUNG MEMORIAL BRIDGE

13.3 MI 27 MIN

DESOTO BRIDGE

5.5 MI 21 MIN

SARASOTA BRADENTON INTERNATIONAL AIRPORT

5.0 MI 13 MIN



6009 & 6015 15TH ST E
Bradenton, FL 34203

JASON MCCORMICK, Senior Associate

+1(561)-613-5293

Jason@LoberRealEstate.com

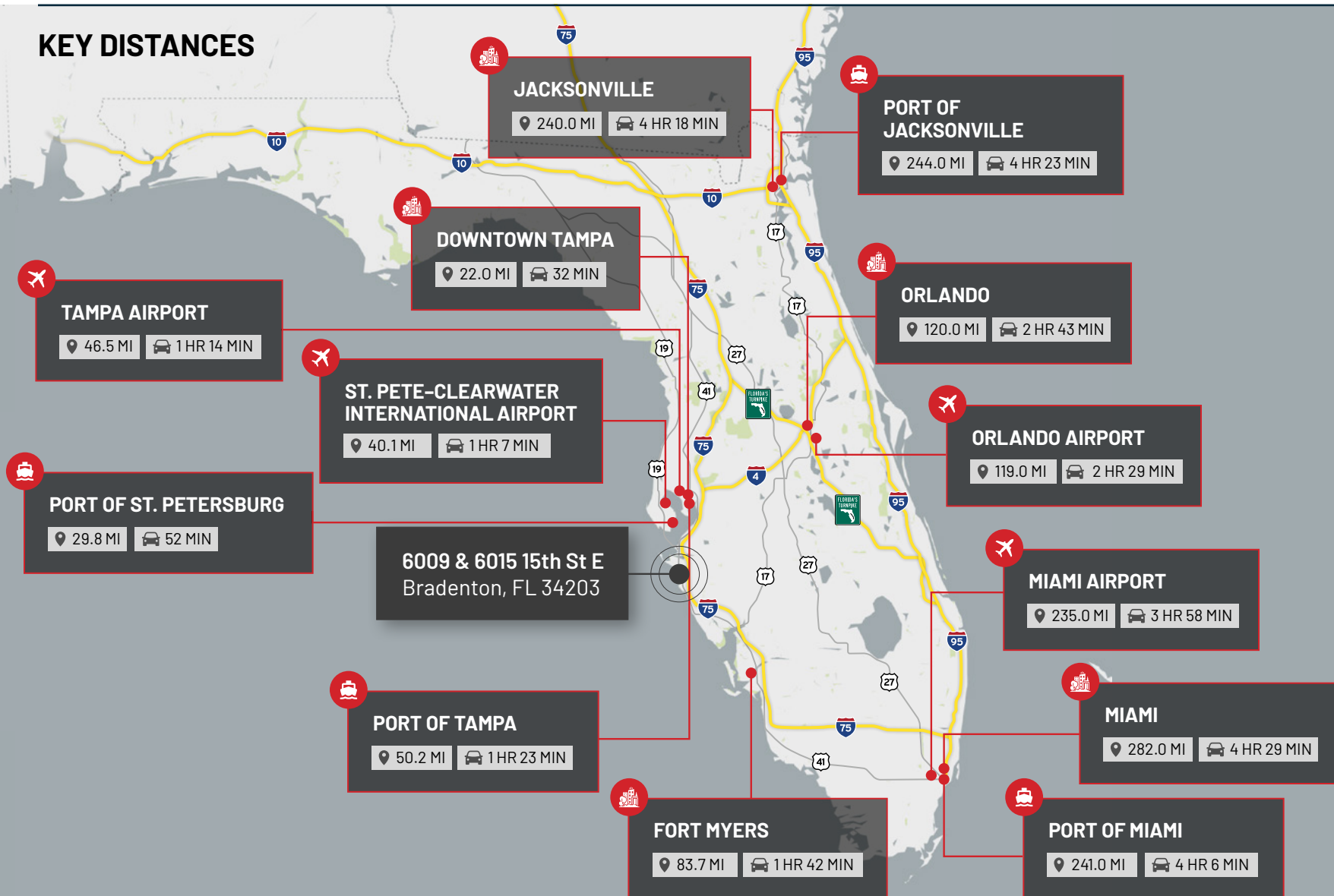
FOR SUBLEASE

13,305 SF ON 5 ACRES | MULTI-TENANT OPTIONS AVAILABLE

LOBER
REAL ESTATE

6009 & 6015 15TH ST E, BRADENTON, FL 34203

KEY DISTANCES



JASON MCCORMICK, Senior Associate

+1(561)-613-5293

Jason@LoberRealEstate.com



301 BLVD E / 15TH ST E