



# FOR LEASE

## 8010 RIDGE ROAD HENRICO, VA 23229

### PROPERTY DETAILS

Property Type: Office

Floors: Two

Rentable Building Area: 7,694 SF

Year Built: 1981



### AVAILABLE SPACES

#	Space Avail.	Rental Rate	Max Contig.	Lease Type	Date Avail.	Description	Service Type
2nd Floor - E	1,006 SF	\$19.00 /SF/YR	1,006 SF	Full Service	Now	Five private offices, two open areas	Full Service

### PROPERTY DESCRIPTION

- Two Stories
- Dedicated parking
- Common restrooms on each floor
- Each suite has a dedicated HVAC system

### LOCATION HIGHLIGHTS

- Easy access to I-64 and Parham Road.
- Convenient to a wide variety of nearby amenities, including restaurants, retail centers, parks, and essential services.

DAVID BARROW

804-592-5000 | [dave@watchpointcre.com](mailto:dave@watchpointcre.com) | [watchpointcre.com](http://watchpointcre.com)

1100 Welborne Drive, Suite 202, Henrico, Virginia 23229

# PROPERTY PHOTOS



DAVID BARROW

804-592-5000 | [dave@watchpointcre.com](mailto:dave@watchpointcre.com) | [watchpointcre.com](http://watchpointcre.com)

1100 Welborne Drive, Suite 202, Henrico, Virginia 23229

# PROPERTY PHOTOS



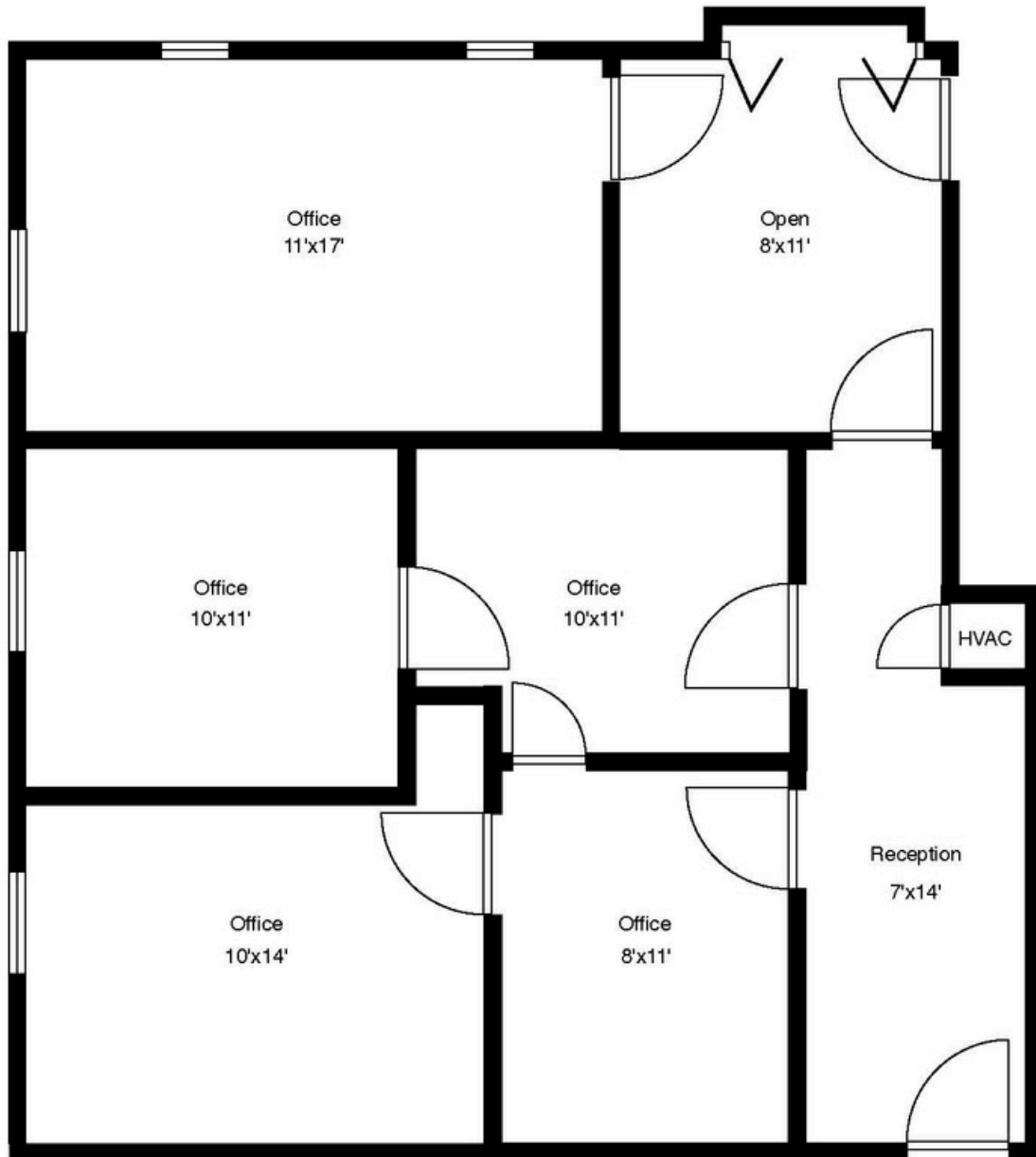
DAVID BARROW

804-592-5000 | [dave@watchpointcre.com](mailto:dave@watchpointcre.com) | [watchpointcre.com](http://watchpointcre.com)

1100 Welborne Drive, Suite 202, Henrico, Virginia 23229



# SUITE E - FLOORPLAN



8010 Ridge Road - Suite E  
Approx 1,006 square feet  
All measurements are approximate

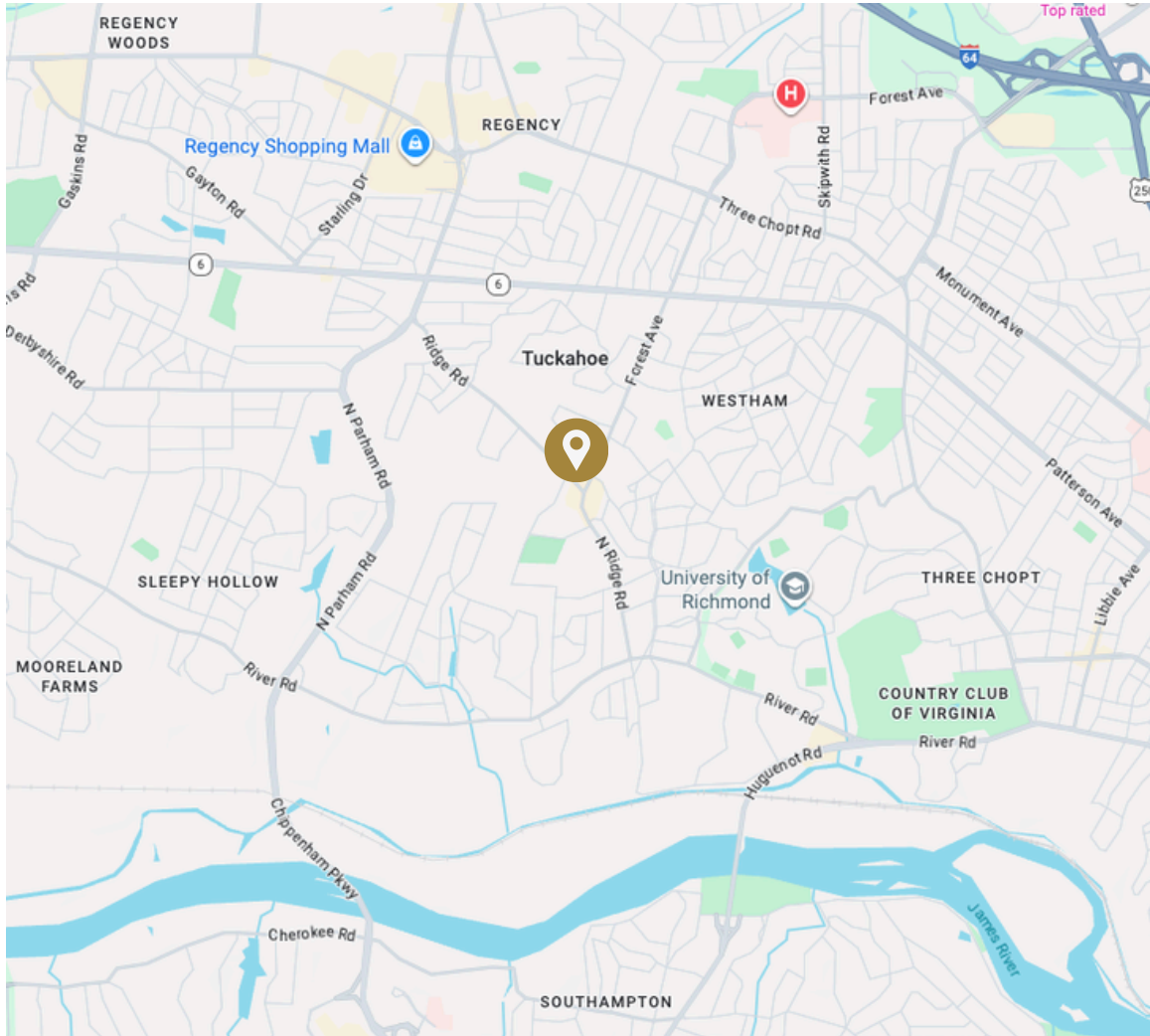
**DAVID BARROW**

804-592-5000 | [dave@watchpointcre.com](mailto:dave@watchpointcre.com) | [watchpointcre.com](http://watchpointcre.com)

1100 Welborne Drive, Suite 202, Henrico, Virginia 23229



# LOCATION MAP



8010 Ridge Road, Henrico, VA 23229

**DAVID BARROW**

804-592-5000 | [dave@watchpointcre.com](mailto:dave@watchpointcre.com) | [watchpointcre.com](http://watchpointcre.com)

1100 Welborne Drive, Suite 202, Henrico, Virginia 23229