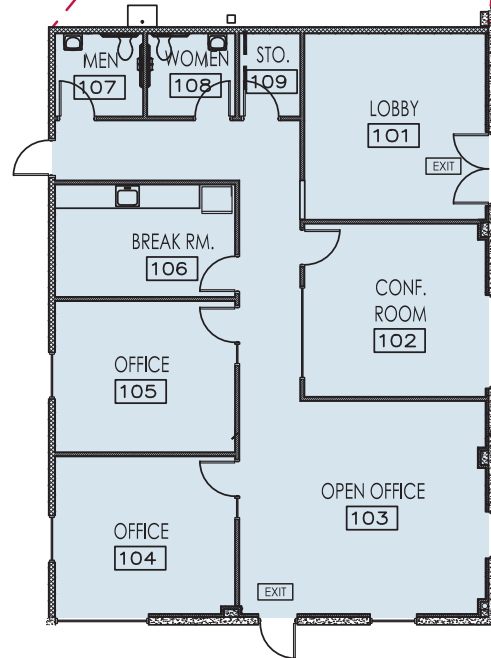
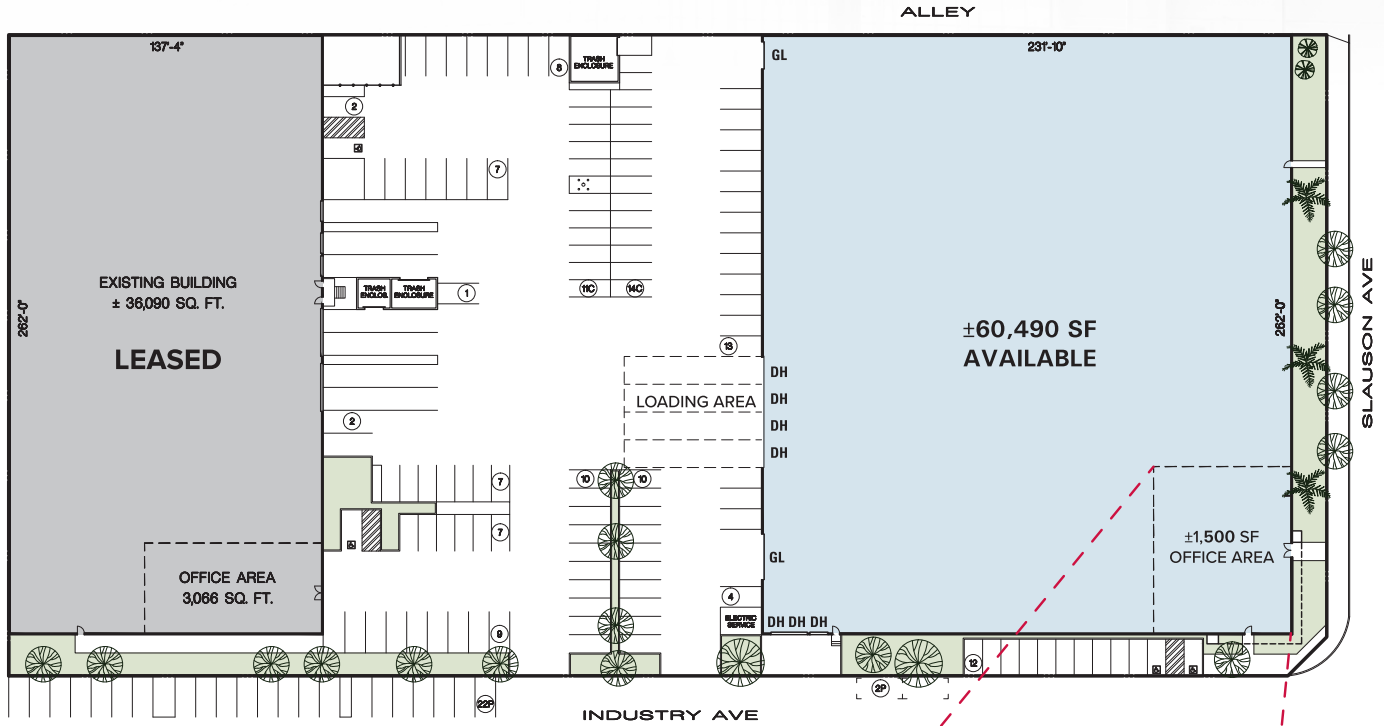


FOR LEASE

±60,490 Sq. Ft. Industrial Building

8401 Slauson Ave, Pico Rivera, CA 90660



NOTE: Drawing not to scale. All measurements and sizes are approximate.

FOR MORE INFORMATION, PLEASE CONTACT

LOCAL EXPERTISE. INTERNATIONAL REACH. WORLD CLASS.

Peter D. Bacci

SIOR | Executive VP, Principal | LIC NO 00946253

pbacci@lee-associates.com

323.767.2022