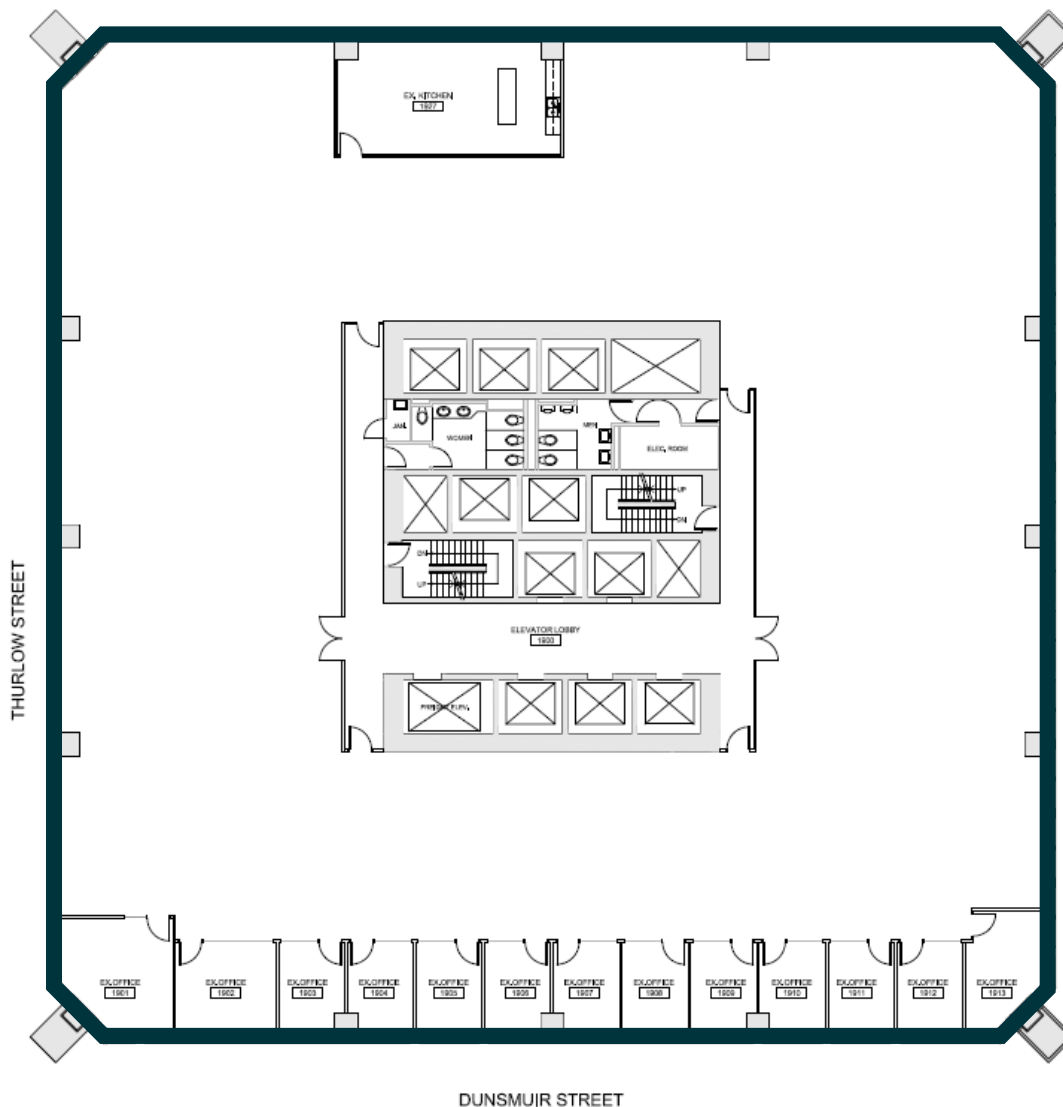


FOUR BENTALL CENTRE

| SUITE | APPROXIMATE SF | SPACE DESCRIPTION |
|-------|----------------|---|
| 1900 | 17,909 SF | Recently updated full floor offering an open plan layout which includes a well positioned north facing kitchen/employee lounge and 13 south facing perimeter offices. Available March 2026. |



OPERATING EXPENSES & PROPERTY TAXES (2025 BUDGET): \$28.50/SF

For leasing information, contact:

DAVID HAUGEN
+1 778 328 5964

DHAUGEN@HUDSONPPI.COM

NIKO CLIRONOMOS
+1 604 306 2126

NCLIRONOMOS@HUDSONPPI.COM

LOOK AND FEEL



Images are for example only and may not represent the final design

For leasing information, contact:

DAVID HAUGEN
+1 778 328 5964

DHAUGEN@HUDSONPPI.COM

NIKO CLIRONOMOS
+1 604 306 2126

NCLIRONOMOS@HUDSONPPI.COM