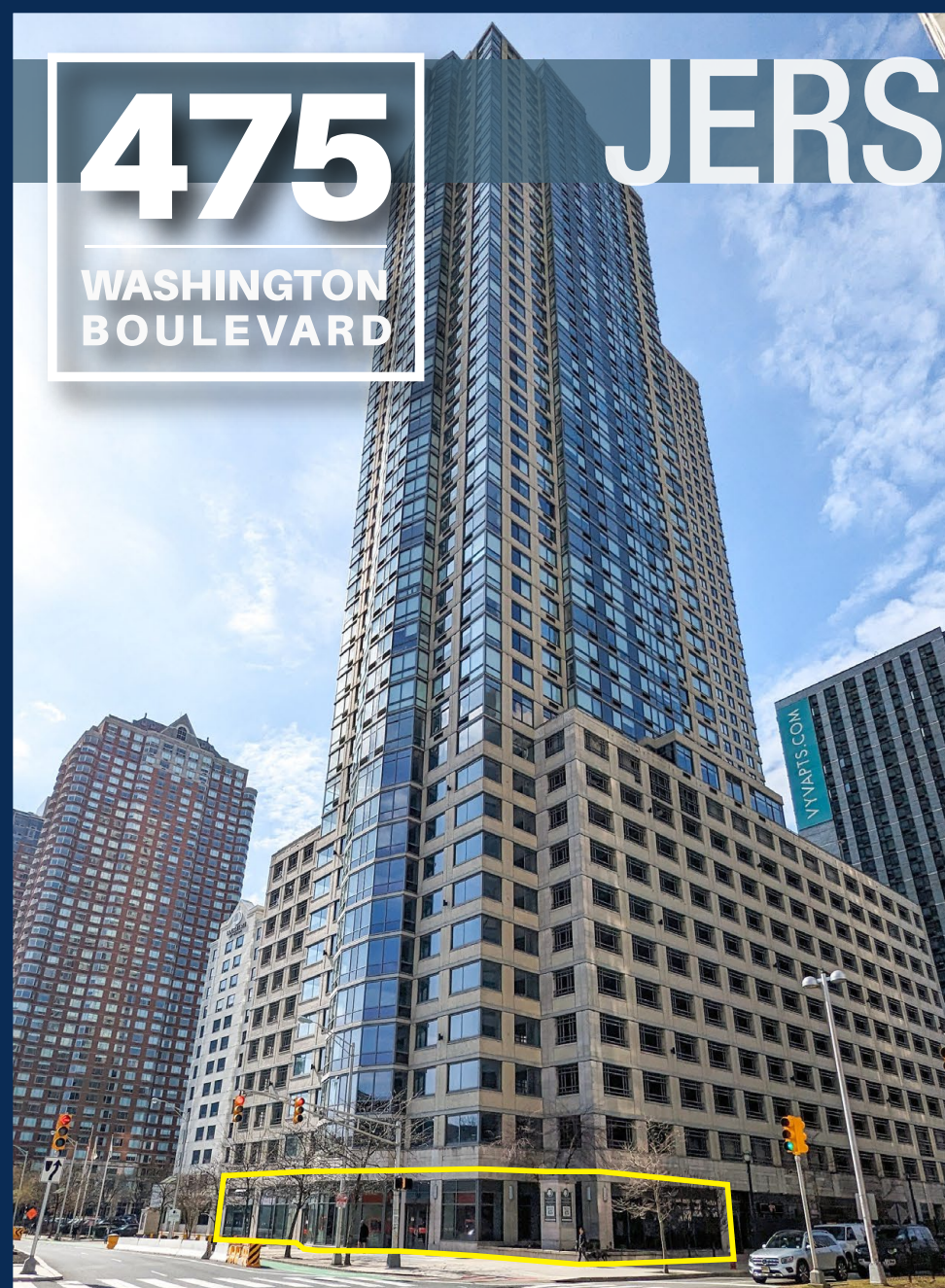


# 475

WASHINGTON  
BOULEVARD

# JERSEY CITY



**veris**  
RESIDENTIAL

**Retail for Lease - Contact**

Robert Mackowski  
Ph. 732.724.4089  
rob@piersonre.com

**PIERSON**  
COMMERCIAL REAL ESTATE®



## Availability

+/- 4,100 SF

(Logical Divisions will be Considered)

## Co-Tenants



## Neighboring Tenants



## Site Description

- Prime corner available for the first time in over 13 years at the intersection of Washington Boulevard and 6th Street in the Newport section of Downtown Jersey City
- 475 Washington Boulevard aka BLVD 475 Residences consists of 523 luxury residential units including shared access with the DoubleTree by Hilton Hotel, which consists of 198 rooms
- Strong daytime population with over 8MM square feet of office space within a few block radius of the subject site
- Directly behind Hudson Exchange, a master planned community with over 5,000 proposed residential units. The next phase of 802 units will be delivered in early 2025.
- A short 5-minute walk to the Newport Path Station (3,092,268 annual passengers in 2023\*) with 10 minute service to NYC
- A short walk to the Harsimus Cove Light Rail Station with service running as far south as Bayonne and as far North as Weehawken

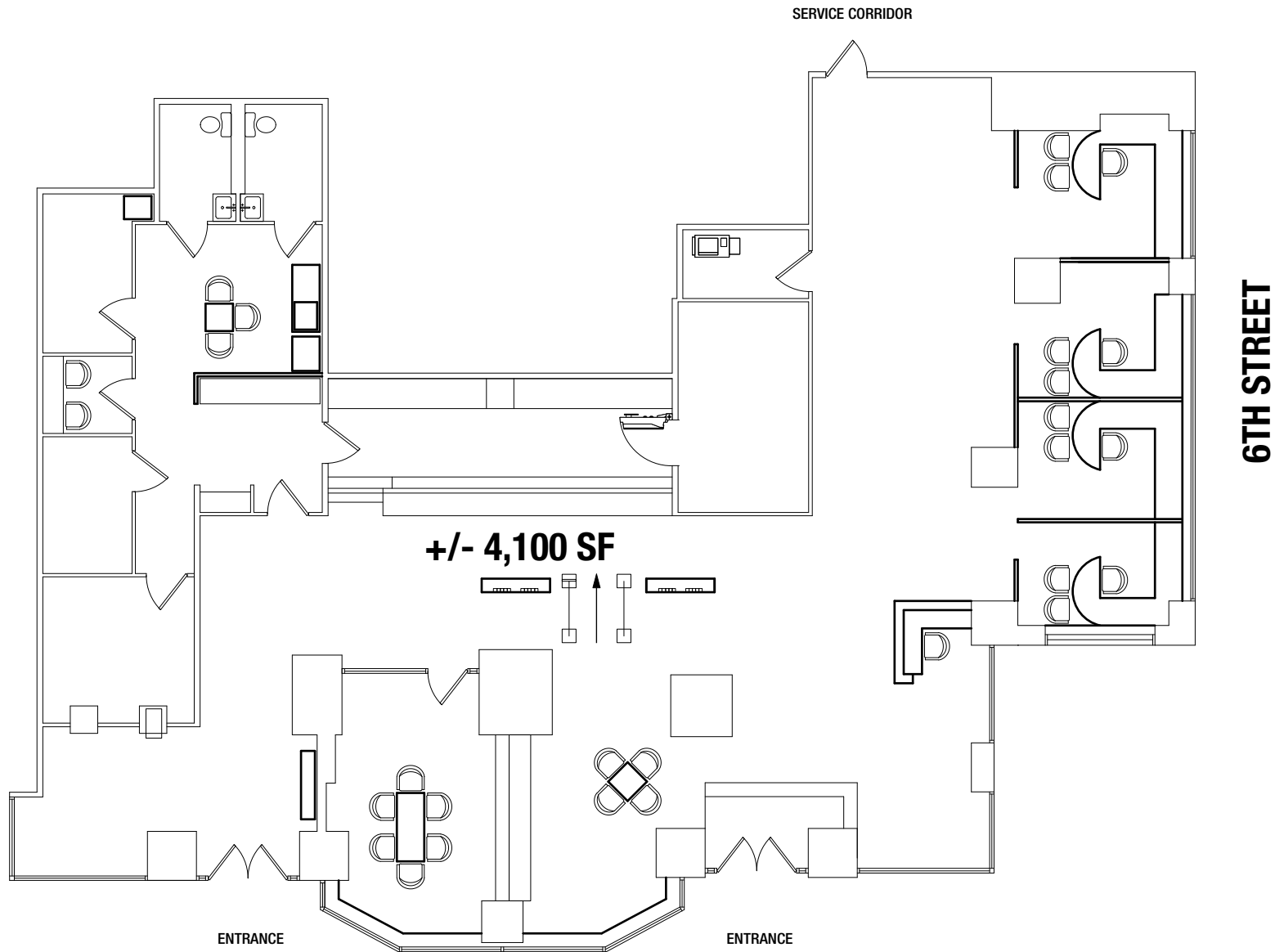
\*Per Port Authority Path Ridership data

## Demographics\*

Radius	Population	Total Daytime Population	Average HH Income	Median Age
.25 Mile	12,355	10,615	\$258,833	35.3
.5 Mile	37,752	56,004	\$235,677	35.3
1 Mile	87,943	111,308	\$226,184	35.9
2 Mile	239,732	240,330	\$173,581	36.5

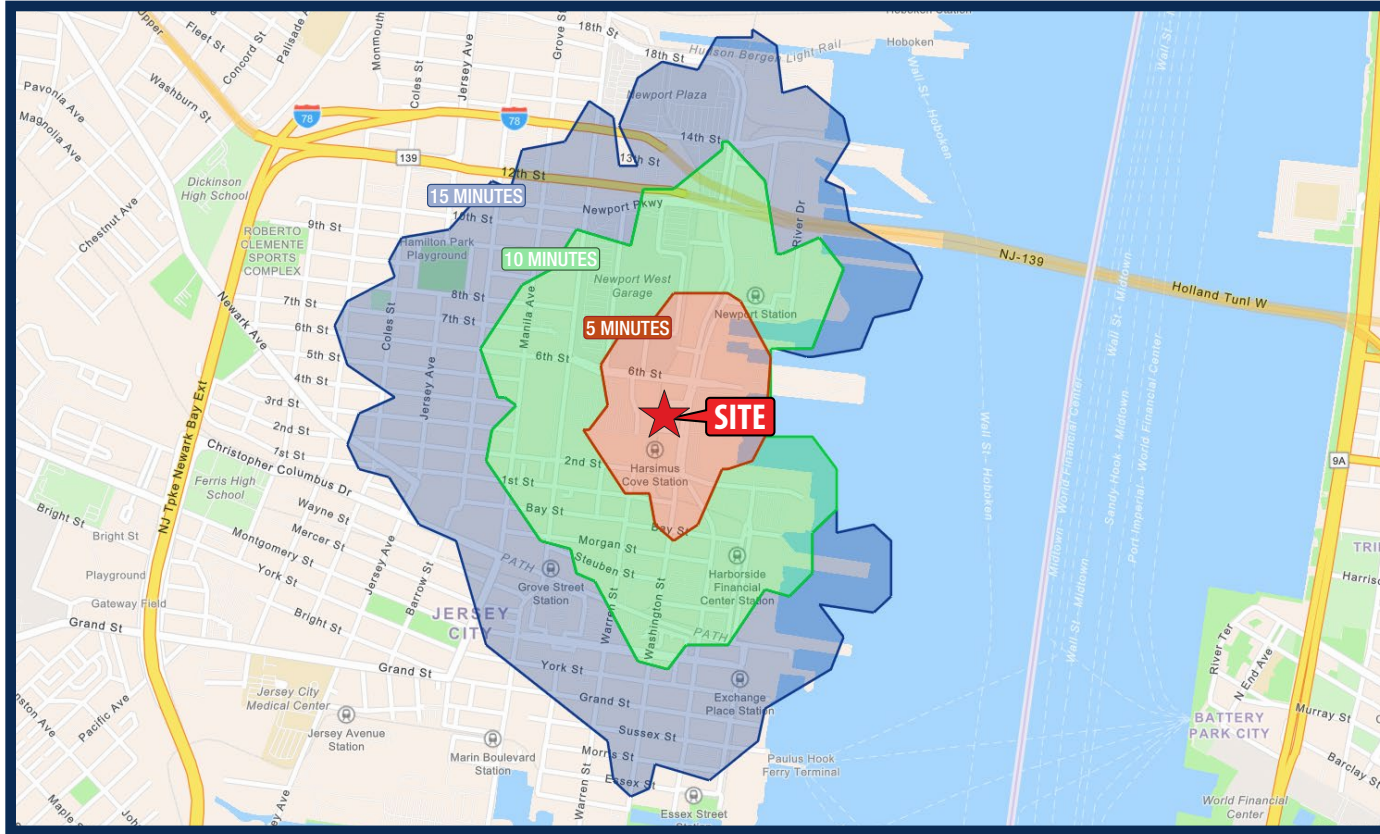
\*Excluding NYC

# FLOOR PLAN

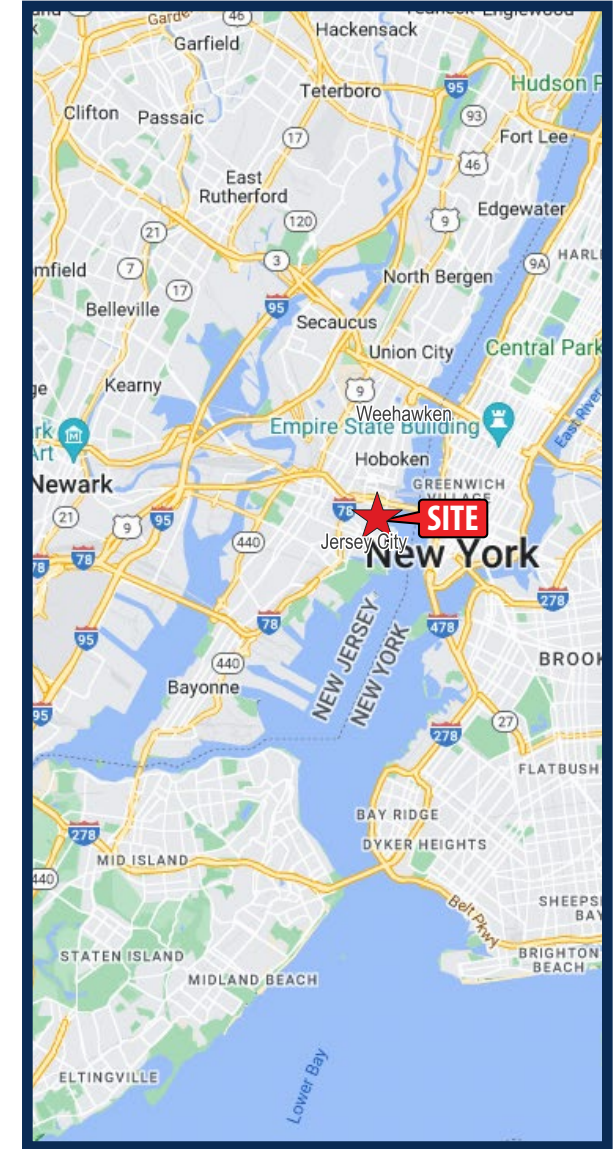


# FOOT TRAFFIC/MARKET LOCATION

## Walking Distance Heat Map



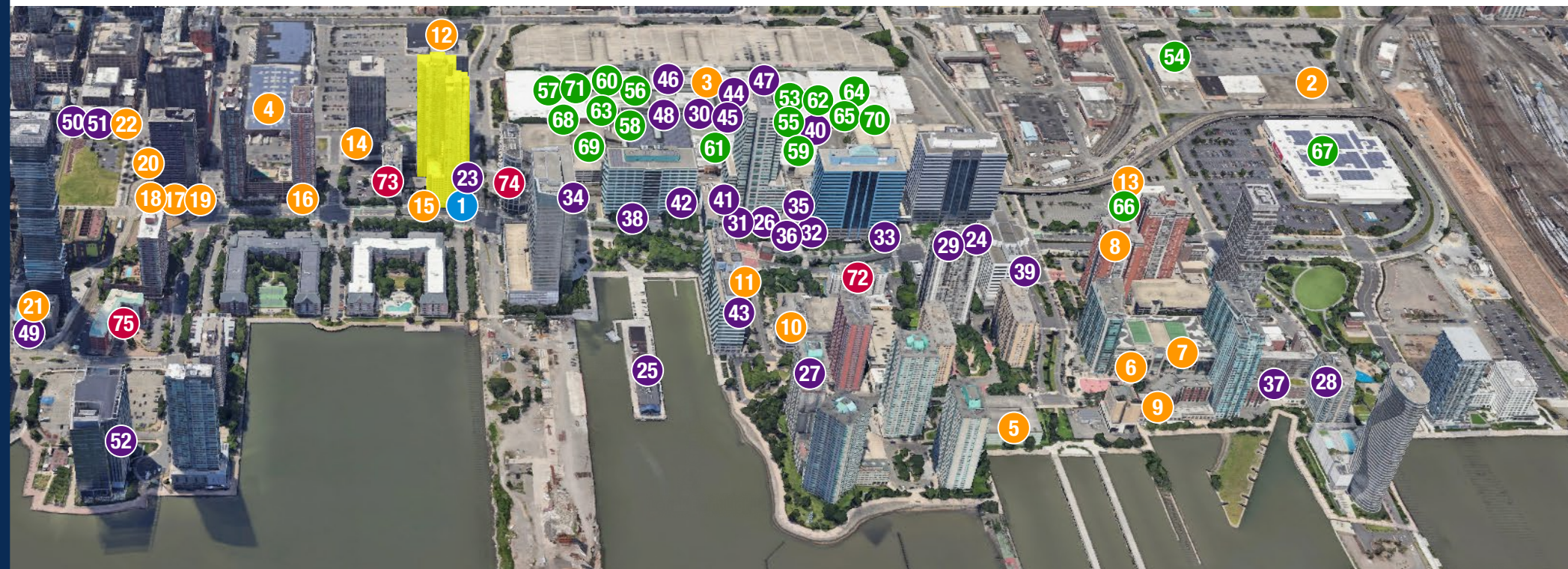
## Market Location



## Walking Distance Demographics

Radius	Population	Total Daytime Population	Average HH Income	Median Age
5 Minute	7,051	7,392	\$243,403	34.8
10 Minute	19,634	33,761	\$230,865	35.3
15 Minute	26,335	34,951	\$231,319	35.7

# MARKET AERIAL



## AREA TENANTS

### AVAILABLE SPACE

- 1. +/- 4,100 SF

### AMENITIES

- 2. ACME Markets
- 3. AMC Theatres
- 4. BJ's
- 5. Duane Reade
- 6. Morton Williams
- 7. Newport Spirits
- 8. River School Newport
- 9. Stevens Cooperative
- 10. University of Phoenix
- 11. UPS

- 12. ShopRite (Coming Soon)
- 13. Phenix Salon Suites
- 14. Solidcore
- 15. Orange Theory Fitness
- 16. The Goddard School
- 17. V's Barbershop
- 18. European Wax Center
- 19. Massage Envy
- 20. Bright Horizons
- 21. Glowbar (Coming Soon)
- 22. Rumble Boxing (Coming Soon)

### RESTAURANTS

- 23. VB3 & Casa De Lobo
- 24. Chef Tan
- 25. Battello Restaurant
- 26. Kura Sushi Bar
- 27. Babo Teahouse
- 28. bwè kafe
- 29. Moge Tee
- 30. Cheesecake Factory
- 31. Chipotle
- 32. Cosi
- 33. Dorrian's Red Hand
- 34. Fire & Oak
- 35. Gregorys Coffee
- 36. Taim (Coming Soon)
- 37. Loradella's Family Pizzeria

- 38. Los Cuernos
- 39. Menya Sandaime Japanese Ramen
- 40. Panera Bread
- 41. Just Salad
- 42. Ruth's Chris Steakhouse
- 43. Starbucks
- 44. Charley's Cheesesteaks
- 45. Kings of Kobe
- 46. Chick-fil-A
- 47. Shake Shack
- 48. Starbucks
- 49. Domodomo
- 50. Tacombi (Coming Soon)
- 51. Daily Provisions (Coming Soon)

- 52. Hudson & Co.

### RETAIL

- 53. Adidas
- 54. Best Buy
- 55. Coach
- 56. Express
- 57. JCPenney
- 58. H&M
- 59. Kohl's
- 60. Lush
- 61. Macy's
- 62. Michael Kors
- 63. Zales

- 64. Dick's Sporting Goods (Coming Soon)
- 65. Sephora
- 66. Staples
- 67. Target
- 68. Zara
- 69. Uniqlo
- 70. Primark (Coming Soon)
- 71. Foot Locker

### HOTEL

- 72. Courtyard by Marriott
- 73. DoubleTree by Hilton
- 74. The Westin Jersey City
- 75. Sonesta Simply Suites

# 475

WASHINGTON  
BOULEVARD

# CONTACT



## Retail for Lease - Contact

Robert Mackowski  
Ph. 732.724.4089  
[rob@piersonre.com](mailto:rob@piersonre.com)

**veris**  
RESIDENTIAL

**PIERSON**  
COMMERCIAL REAL ESTATE®

© Pierson Commercial Real Estate LLC. This information has been obtained from sources believed reliable. We have not verified it and make no guarantee, warranty or representation about it. Any renderings, projections, opinions, assumptions or estimates used are for example only and do not represent the current or future performance of the property. You and your advisors should conduct a careful, independent investigation of the property to determine to your satisfaction the suitability of the property for your needs.