

## CENTRAL OFFICE SPACE

9912 - 106 Street, Edmonton, AB

# FOR LEASE

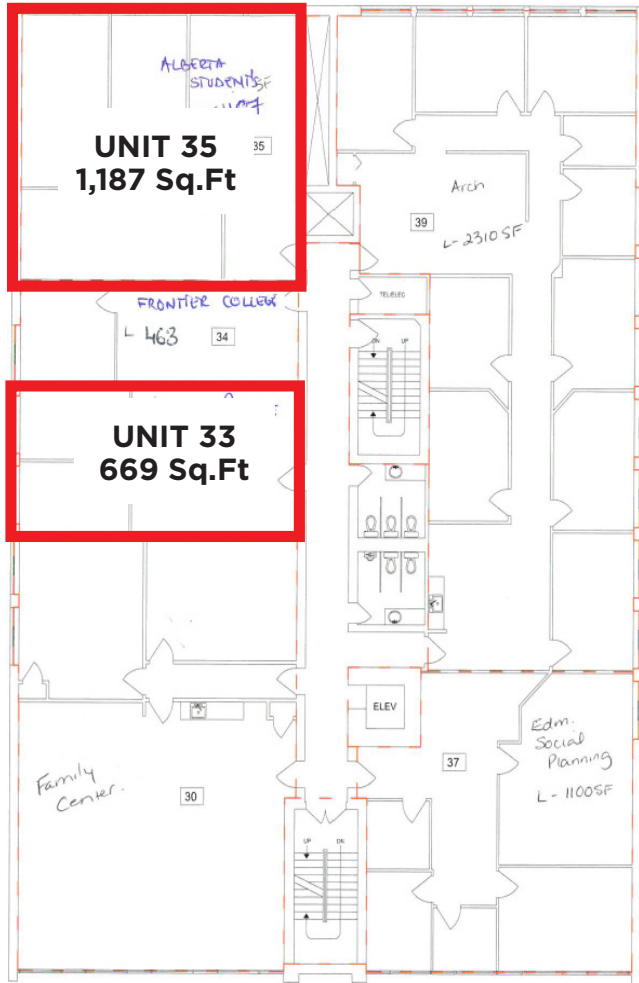
## PROPERTY HIGHLIGHTS

- Economical office space
- Walking distance to Downtown financial core
- Within 3 blocks of 2 LRT stations
- Quick access to exit Downtown core
- Wheelchair accessible

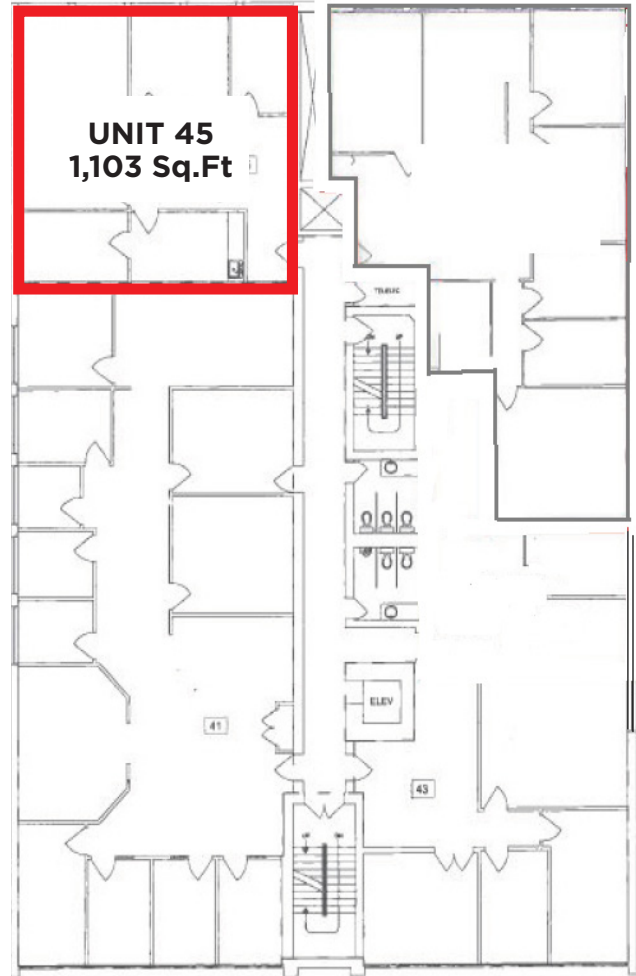
# CENTRAL OFFICE SPACE

**FOR LEASE**

3rd FLOOR



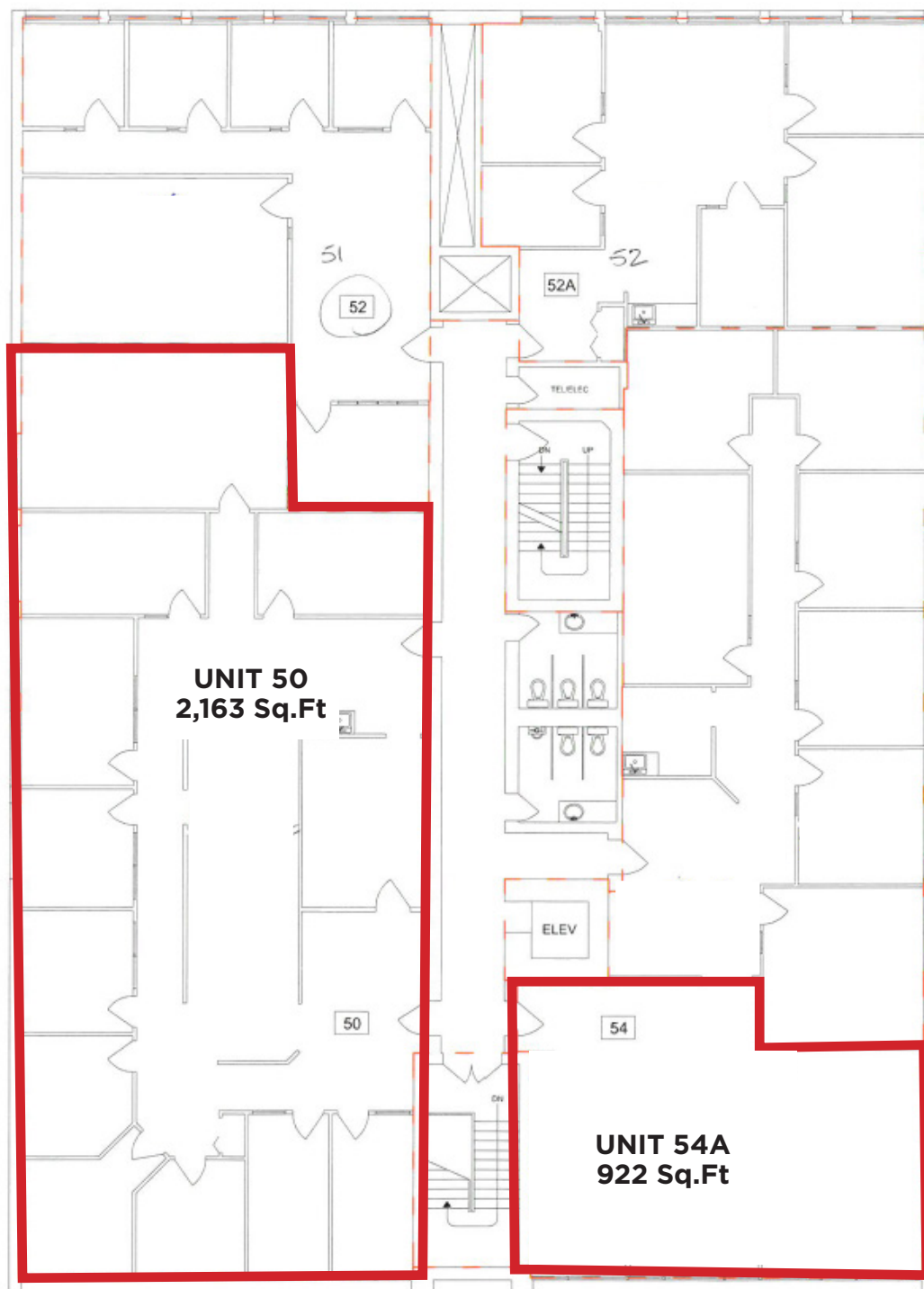
4th FLOOR



# CENTRAL OFFICE SPACE

**FOR LEASE**

## 5th FLOOR



# CENTRAL OFFICE SPACE FOR LEASE

## PROPERTY INFORMATION

<b>MUNICIPAL ADDRESS:</b>	9912-106 Street, Edmonton, AB
<b>SIZE:</b>	Unit 33: 669 Sq.Ft. (+/-) Unit 35: 1,187 Sq.Ft. (+/-) Unit 45: 1,103 Sq.Ft (+/-) Unit 50: 2,613 Sq.Ft (+/-) Unit 54A: 922 Sq.Ft. (+/-)
<b>ZONING:</b>	RMU (Residential Mixed Use Zone)
<b>PARKING:</b>	impark at monthly cost
<b>POSSESSION:</b>	Immediate
<b>OP.COSTS:</b>	\$10.50/Sq.Ft
<b>LEASE RATE:</b>	\$10.00/Sq.Ft

## MORE INFORMATION

**CHUCK CLUBINE**  
SENIOR ASSOCIATE

Cell: 780.264.7773  
Direct: 780.784.6553  
Fax: 780.483.2277  
chuck@lizotterealestate.com

**TOM DEAN**  
ASSOCIATE

Cell: 780.920.8019  
Direct: 780.784.6550  
Fax: 780.483.2277  
tom@lizotterealestate.com



Virtual Tours

[Entrance/Common Area](#)

[Suite #33](#)

[Suite #40](#)

[Suite #50](#)



**LIZOTTE**  
AND ASSOCIATES REAL ESTATE INC

**780.488.0888**

[www.lizotterealestate.com](http://www.lizotterealestate.com)

#1200, 10117 Jasper Avenue Edmonton, AB T5J 1W8

No warranty or representation, expressed or implied, is made as to the accuracy of the information contained herein, and same is submitted subject to errors, omissions, change of price, rental or other conditions, withdrawal without notice, and to any specific listing condition, imposed by our principals.