

Majestic Airport Center - Ontario @ CCC IV

FOR LEASE 99,840 SF (P.O.L.)

Building 1: 3550-B East Jurupa Street, Ontario, CA



Optional Activation of the Port of Long Beach Foreign Trade Zone (FTZ 50-1)

FEATURES

- Office:** 6,497 SF
- Shipping Office:** 554 SF
- Clearance:** 30' at First Column
- Sprinkler System:** ESFR w/ K-17 Heads
- Loading:** 26 - 9' x 10' Dock High Doors
 - 11 w/ 6' x 8', 35,000 LB. Capacity Mechanical Levelers
 - 5 w/ Edge-of-Dock Levelers
- 1 - Ground Level Position w/ Ramp
- Bay Spacing:** 50' x 52'
- Power:** 1- 1,200 Amp, 277/480 Volts, 3 Phase
- Parking:** To Code
- Whse Lighting:** LED w/ Motion Sensors
- Truck Court:** Fully Secured Yard

Adjacent to Ontario International Airport

Immediate Access to the Pomona (60), Ontario (15) and San Bernardino (10) Freeways



13191 Crossroads Parkway North, 6th Floor, City of Industry, CA 91746
(562) 692-9581 | www.majesticrealty.com | R.E. License #00255328 (CA)

Mitch Embrey

(562) 654-2726

membrey@majesticrealty.com

R.E. License #02058837 (CA)

Trent Wylde

(562) 948-4315

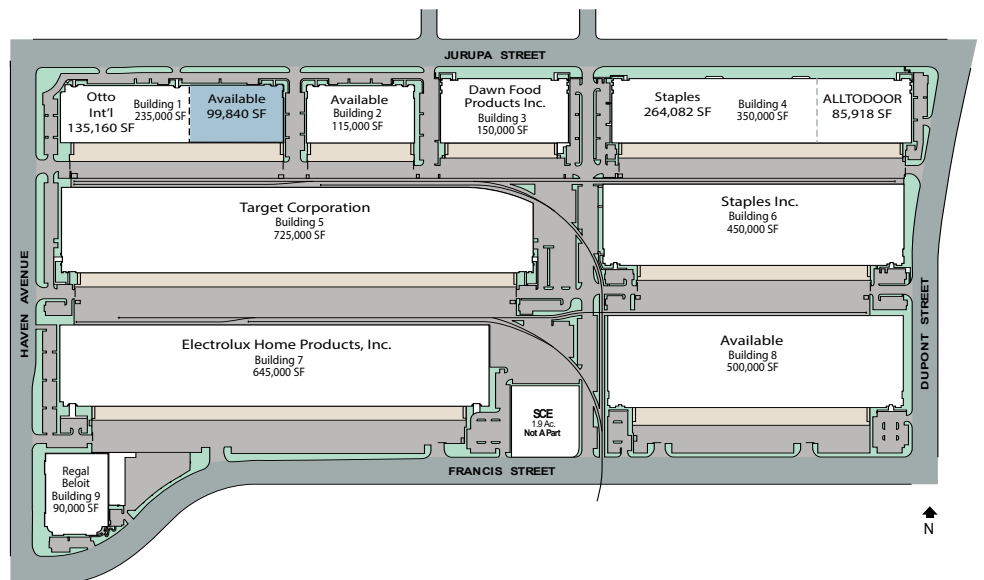
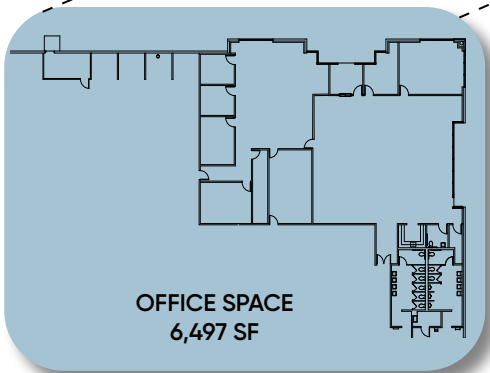
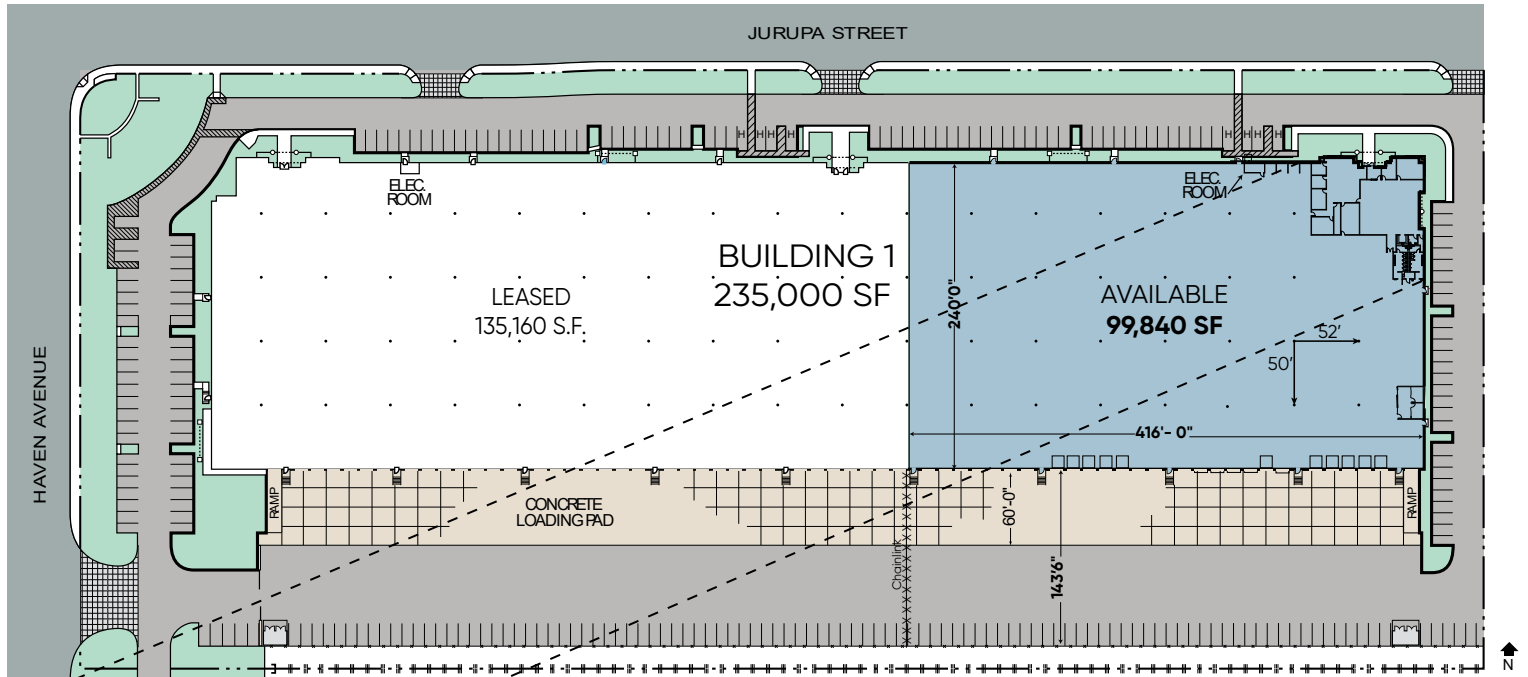
twylde@majesticrealty.com

R.E. License #01180856 (CA)

Majestic Airport Center - Ontario @ CCC IV

FOR LEASE 99,840 SF (P.O.L.)

Building 1: 3550-B East Jurupa Street, Ontario, CA



Mitch Embrey
(562) 654-2726
membrey@majesticrealty.com
R.E. License #02058837 (CA)

Trent Wylde
(562) 948-4315
twylde@majesticrealty.com
R.E. License #01180856 (CA)