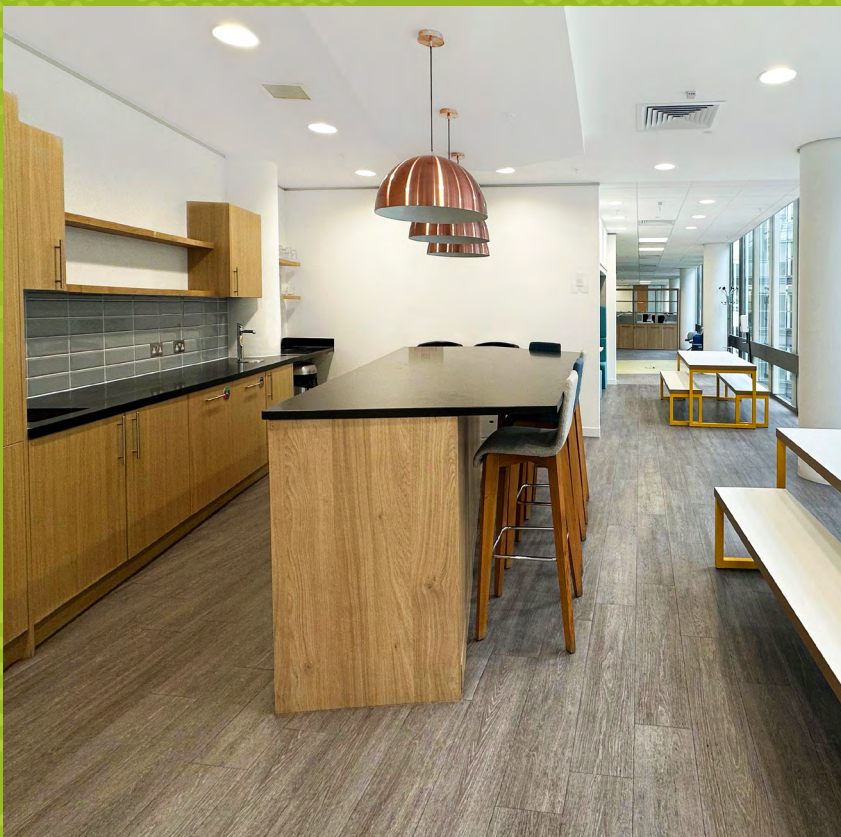


MATRIX  
BASINGSTOKE

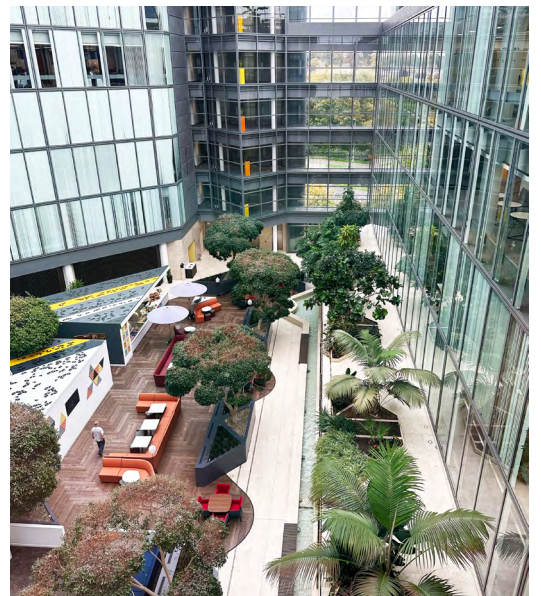
FOURTH FLOOR SOUTH  
7,306 SQ FT (679 SQ M)



**FULLY FITTED OFFICE SUITE DELIVERED TO A HIGH STANDARD  
BENEFITS FROM PANORAMIC VIEWS AND  
24 ON SITE CAR PARKING SPACES**

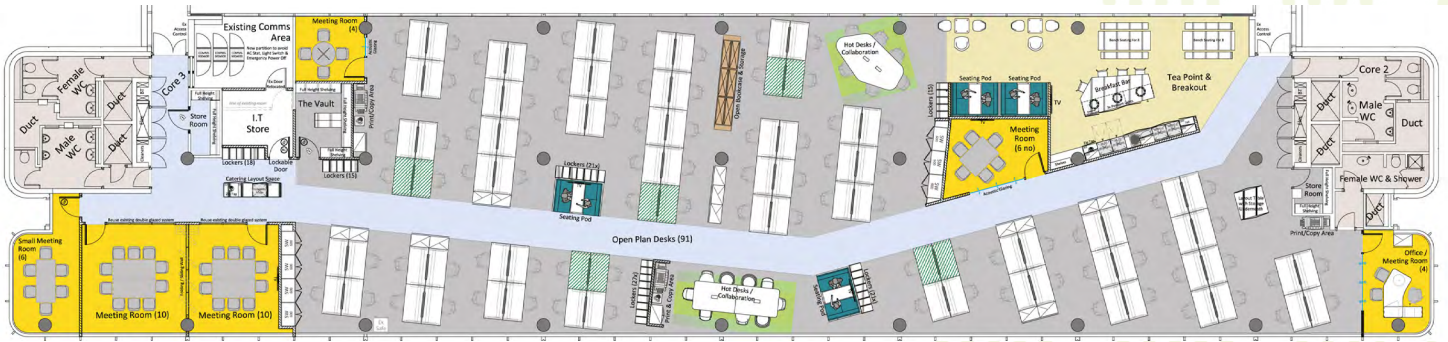
MATRIX-HOUSE.CO.UK BASING VIEW • RG21 4FF

# MATRIX BASINGSTOKE



# FOURTH FLOOR SOUTH AT MATRIX

	sq ft	sq m	Car spaces
<b>FOURTH FLOOR SOUTH</b>	<b>7,306</b>	<b>679</b>	<b>24</b>



## SUITE SPECIFICATION

Full access raised floors	Breakfast bar/break out area
LED lighting	Comms room
High quality fit out	EPC rating D-96
Cat 6 cabling in situ	24 on site car spaces
VAV air conditioning	Panoramic views

## BUILDING SPECIFICATION

On-site gym
Showers and bicycle store
Ground floor atrium with café
Break out work places
Conference rooms for hire
Easy access town centre and rail station
High speed broadband
24/7 access and security
Opposite Waitrose



## Accommodation schedule

Open plan desks (fixed)	90	Store rooms	3
Agile desks	24	Lockers	117
Meeting rooms (10 person)	2	<b>Total head count</b>	
Meeting rooms (6 person)	2	(fixed desks)	90
Meeting rooms (4 person)	2	<b>Total head count</b>	
Seating pods	4	(fixed desks & agile working)	114
Teapoint & breakout	1		
Print / copy area	2		
Comms / IT store	1		

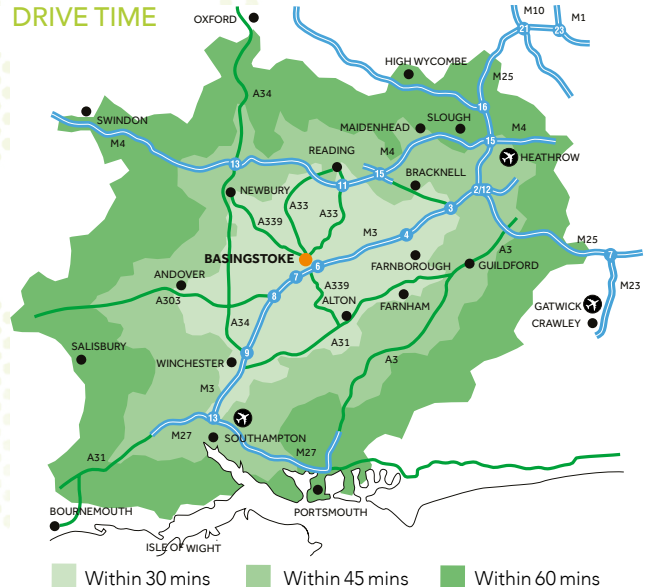
## LEASE

The accommodation is available by way of a new lease direct from the landlord.

## RENT

On application.

## DRIVE TIME



## VIEWING AND FURTHER ENQUIRIES

33 Margaret Street  
London  
W1G 0JD

[savills.co.uk](http://savills.co.uk) **savills**

**020 7499 8644**

**bdt**

[www.bdt.uk.com](http://www.bdt.uk.com)

**01256 840777**

**Olivia Fryer**  
olivia.fryer@savills.com  
07951 041 788

**Andrew Newman**  
andrew.newman@bdt.uk.com  
07768 724 356