



**SAUGATUCK
COMMERCIAL**
REAL ESTATE LLC
LICENSED IN CT, NY, MA, RI, NH, FL

**OFFICE SPACE
WESTPORT, CT**

SINGLE OFFICE

46-48 POST ROAD EAST



**2ND FLOOR
OFFICE**

**DOWNTOWN
WESTPORT
ACROSS FROM
MAIN STREET**



- Small, single office available above Blue & Cream; directly across from Bedford Square and Anthropologie.
- Centrally located in downtown Westport across from Main Street shops, restaurants and amenities.
- Walk to the Saugatuck River, adjacent to Westport Library and Levitt Pavilion.
- Convenient parking on the street and in secure municipal lot.

Demographics	1 Mile	3 Mile	5 Mile
Population	6,198	47,745	131,921
Average HHI	\$384,575	\$294,853	\$230,583

Exclusive Broker:
Penny Wickey 203.222.4194
pwickey@saugatuckcommercial.com

The foregoing information was furnished to us by sources which we deem reliable, but no warranty or representative is made as to the accuracy thereof. Subject to correction of errors, omissions, change of price, prior sale or withdrawal from market without notice.

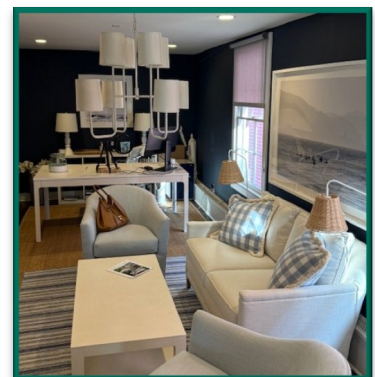


**SAUGATUCK
COMMERCIAL**
REAL ESTATE LLC
LICENSED IN CT, NY, MA, RI, NH, FL

OFFICE SPACE WESTPORT, CT

SINGLE OFFICE

46-48 POST ROAD EAST



Exclusive Broker:
Penny Wickey 203.222.4194
pwickey@saugatuckcommercial.com