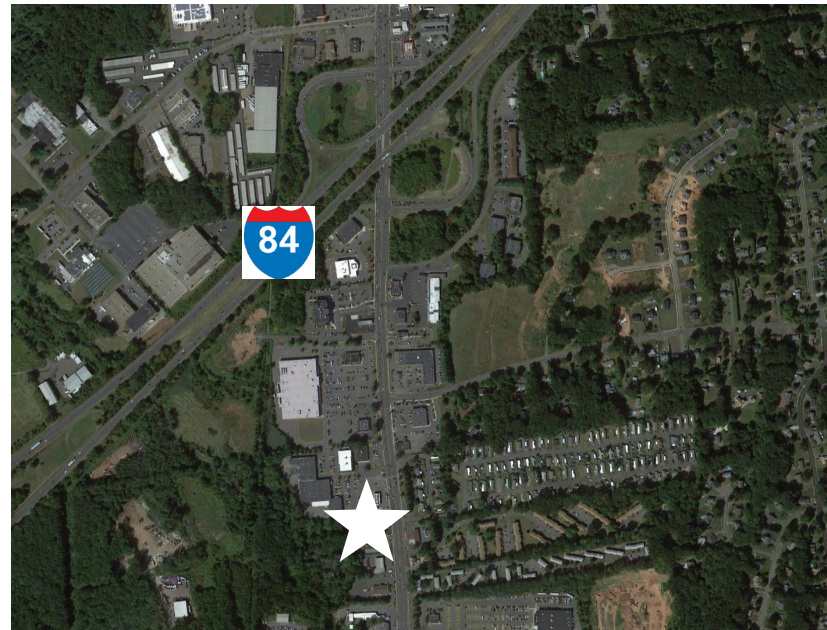




Property Details

- Floor 1: 4,731 SF available
- Floor 2: 1,673 SF available
- 5/1,000 SF parking ratio
- Professional office space with a lot of windows and natural sunlight
- Conveniently located right off of I-84 on Queen Street in Southington, CT



For further information, please contact:

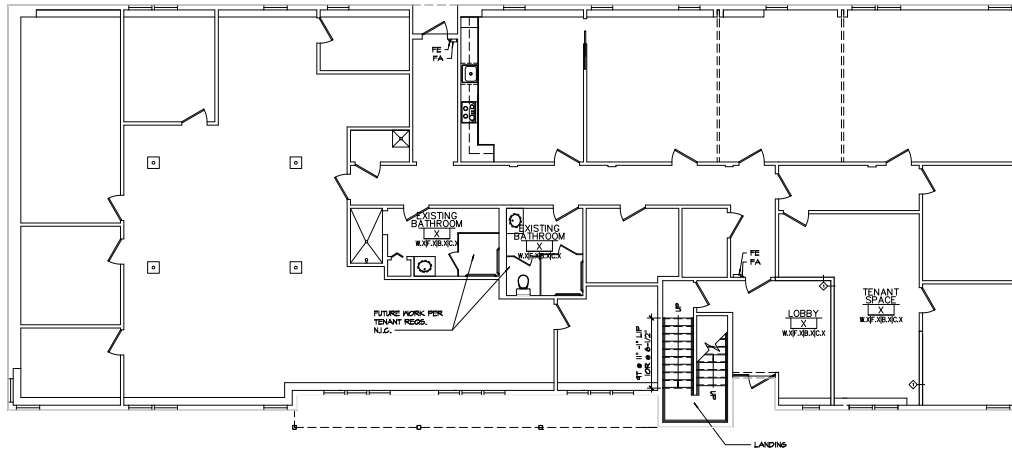
Maury Smith | D 860.327.8304 | C 860.748.2508 | maury.smith@avisonyoung.com

Avison Young | 225 Asylum Street, 16th Floor | Hartford, CT 06103 | T 860.327.8330

300 Queen Street

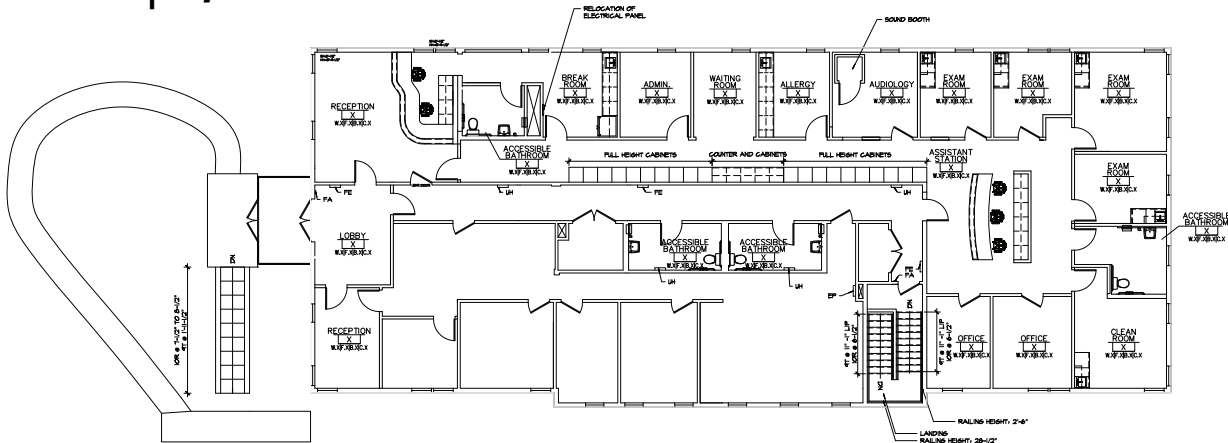
Southington, CT

Floor 1 | 4,731 SF



1 PROPOSED FIRST FLOOR PLAN
SCALE: 1/8"=1'-0"

Floor 2 | 1,673 SF



2 PROPOSED SECOND FLOOR PLAN
SCALE: 1/8"=1'-0"



For further information, please contact:

Maury Smith | D 860.327.8304 | C 860.748.2508 | maury.smith@avisonyoung.com

Avison Young | 225 Asylum Street, 16th Floor | Hartford, CT 06103 | T 860.327.8330

**AVISON
YOUNG**