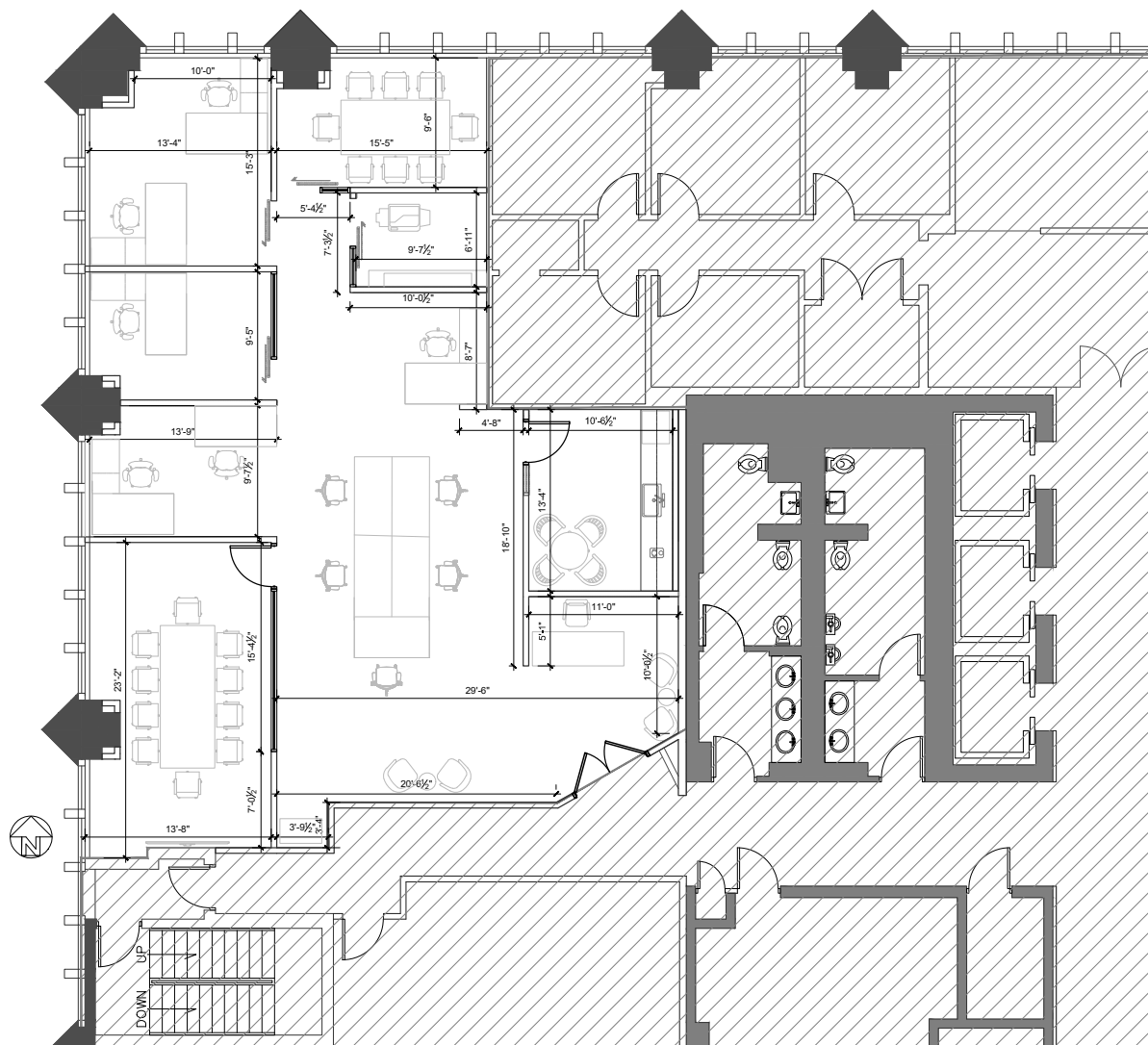




SUITE 1720: 2,695 SF

**VIEW
VIRTUAL
TOUR** 



**SPEC SUITE
STANDARD FINISHES**

For more information, please contact:

JON BLUNK
President
305.400.9887
jblunk@tcrefl.com

CRISTINA GLARIA
Senior Vice President
305.867.3626
cglaria@tcrefl.com

HARRISON MISCHEL, MBA
Director
305.935.4374
hmischel@tcrefl.com

LAUREL OSWALD
Executive Director
305.867.3625
loswald@tcrefl.com

TCRE

1 SE 3rd Avenue | Suite 1010
Miami, FL 33131
www.tcrefl.com