

1401

SYRENTIS CLINICAL RESE

FOR LEASE

1401 N TUSTIN AVE

SANTA ANA, CA

PROPERTY FEATURES

- Medical and office suites available
- 3-story medical/office building
- Easy access and convenient parking
- Free surface parking (reserved parking available upon request)
- Professionally managed
- Ideally suited for therapists, law firms, doctors and accountants
- Centrally located near restaurants, banks and major freeways
- Asking Rate:
 - Office: \$1.75 MG
 - Medical: \$2.75 MG
 - CAMs: \$0.30 PSF

AVAILABILITY

SUITE	SIZE	TYPE	DESCRIPTION
120	1,404	Office	Reception, Waiting Room, Offices
220	5,105	Medical	Exam rooms, Private offices, Procedure or Open Area, Private Restrooms, Waiting Room, Reception, and Nurse Station.
300	2,524	Medical, Office, Lab	Open Area, Reception, Private Restroom, Exam Rooms, Offices
330	972	Office, Medical	Open Area, Reception, Waiting Room, Offices
355	1,597	Medical	Reception, Exam Rooms, Waiting Room
300/355	4,121	Medical	Reception, Open Area, Waiting Room, Exam Rooms, Private Restroom, Offices

Eric Darnell

Senior Vice President

License ID# 01888743

949.790.3157

edarnell@leeirvine.com

Mia Pham

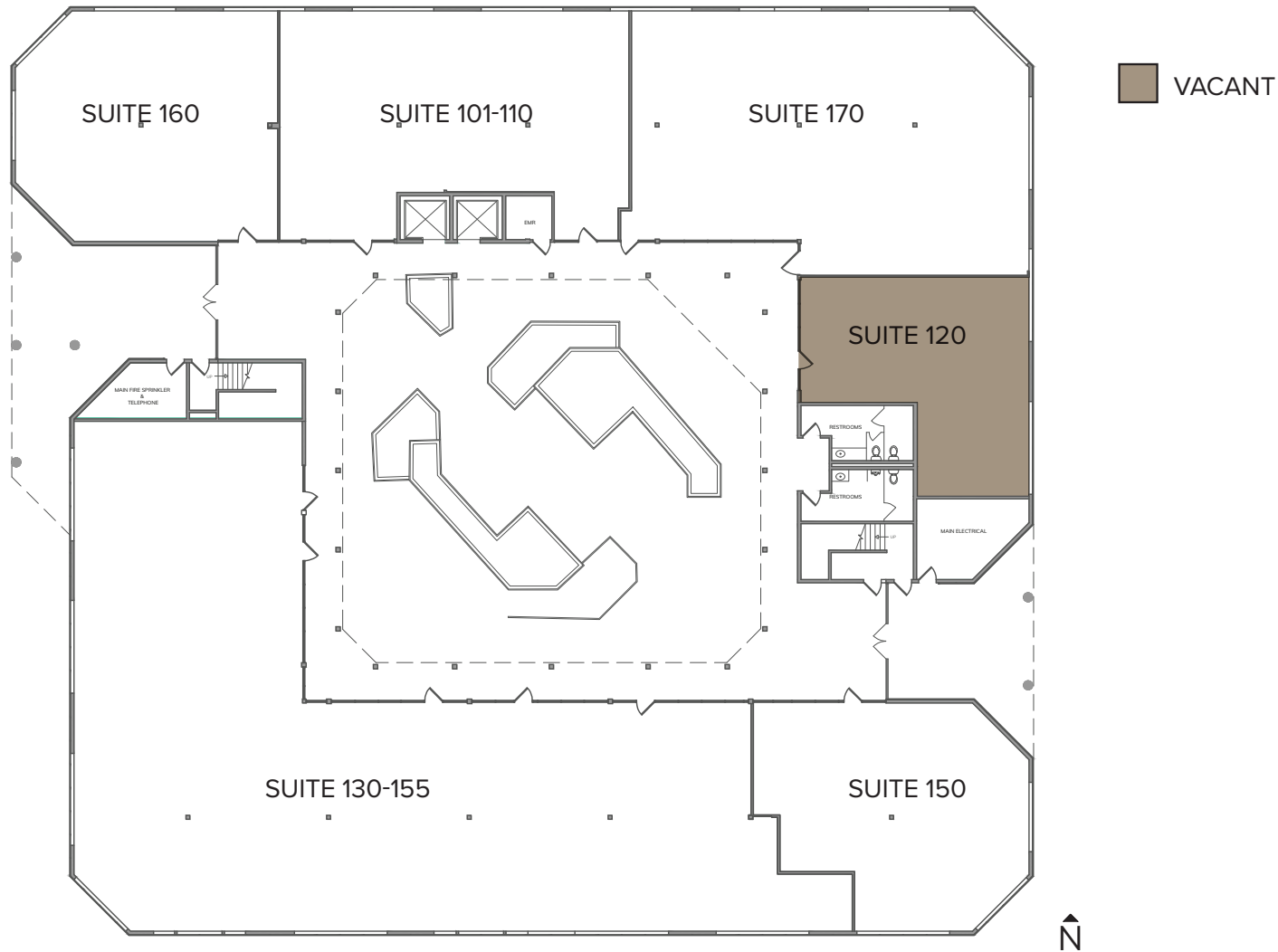
Senior Vice President

License ID# 01875144

949.790.3129

mpham@leeirvine.com

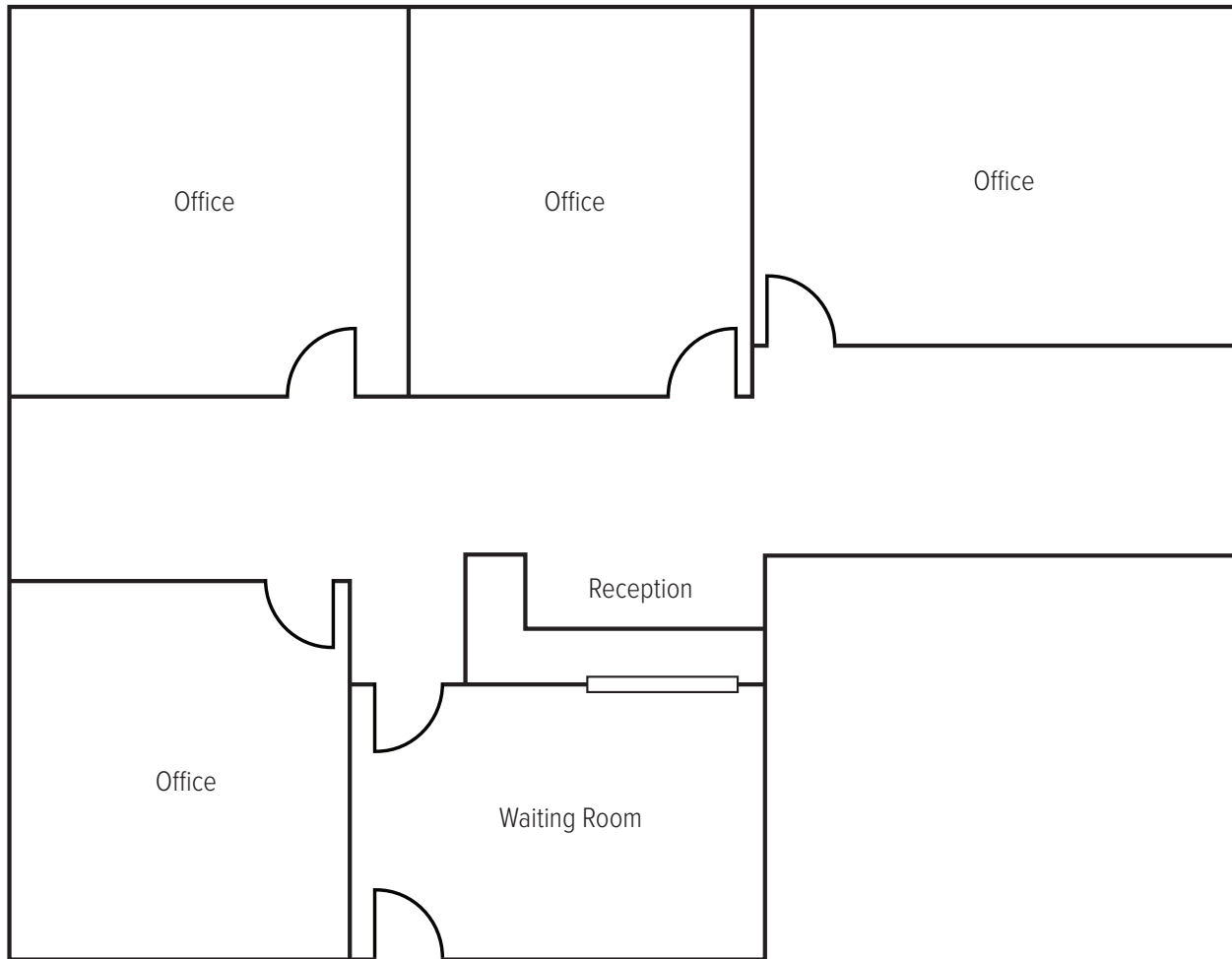
1ST FLOOR FLOOR PLAN



Eric Darnell
Senior Vice President
License ID# 01888743
949.790.3157
edarnell@leeirvine.com

Mia Pham
Senior Vice President
License ID# 01875144
949.790.3129
mpham@leeirvine.com

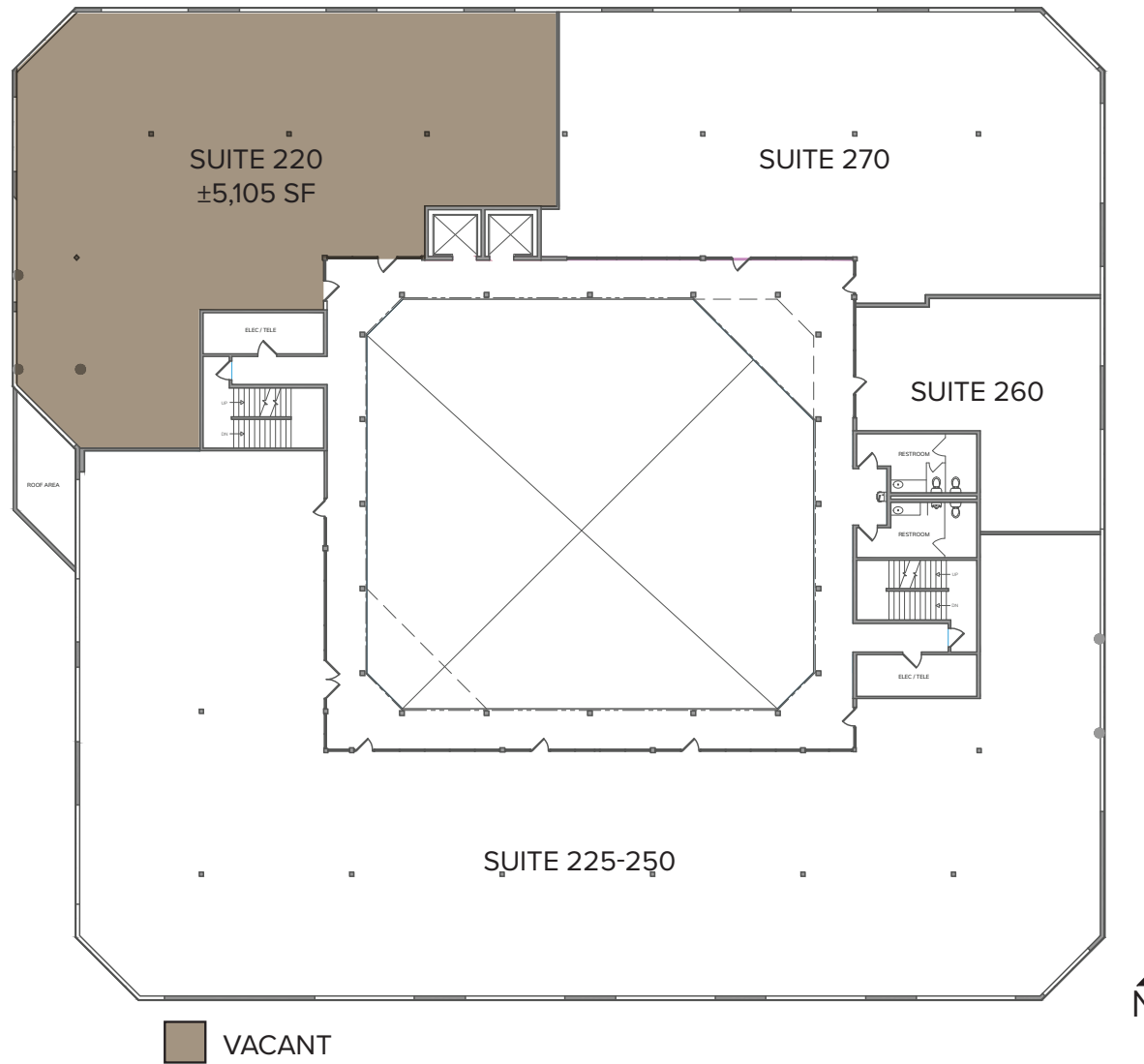
SUITE 120 | ±1,404 SQ. FT.



Eric Darnell
Senior Vice President
License ID# 01888743
949.790.3157
edarnell@leeirvine.com

Mia Pham
Senior Vice President
License ID# 01875144
949.790.3129
mpham@leeirvine.com

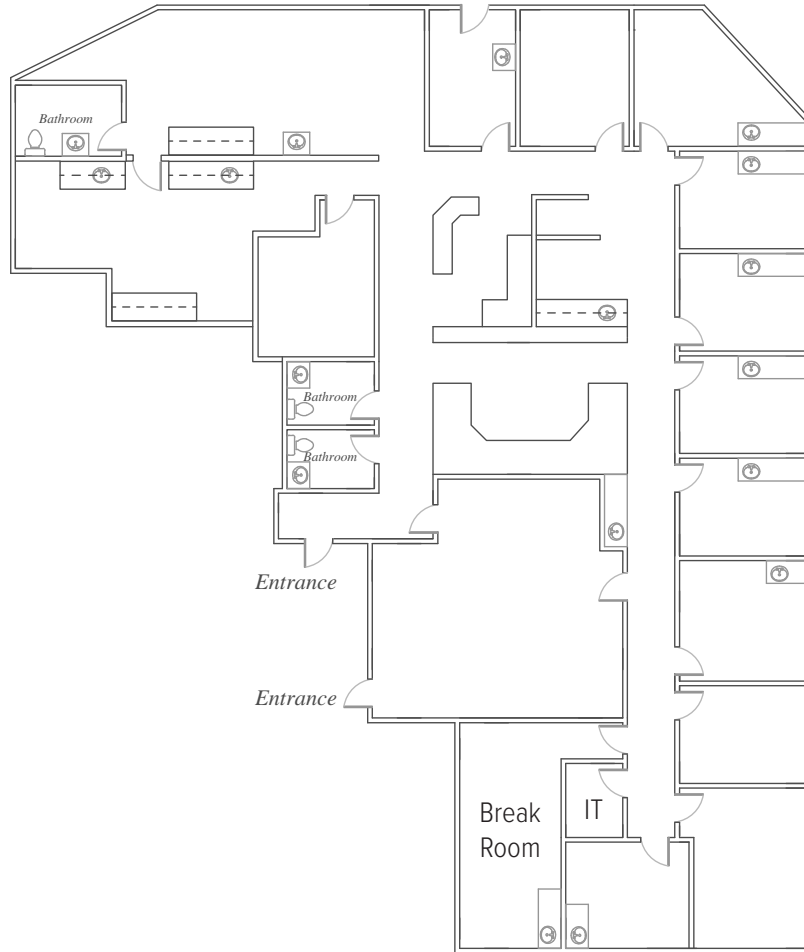
2ND FLOOR FLOOR PLAN



Eric Darnell
Senior Vice President
License ID# 01888743
949.790.3157
edarnell@leeirvine.com

Mia Pham
Senior Vice President
License ID# 01875144
949.790.3129
mpham@leeirvine.com

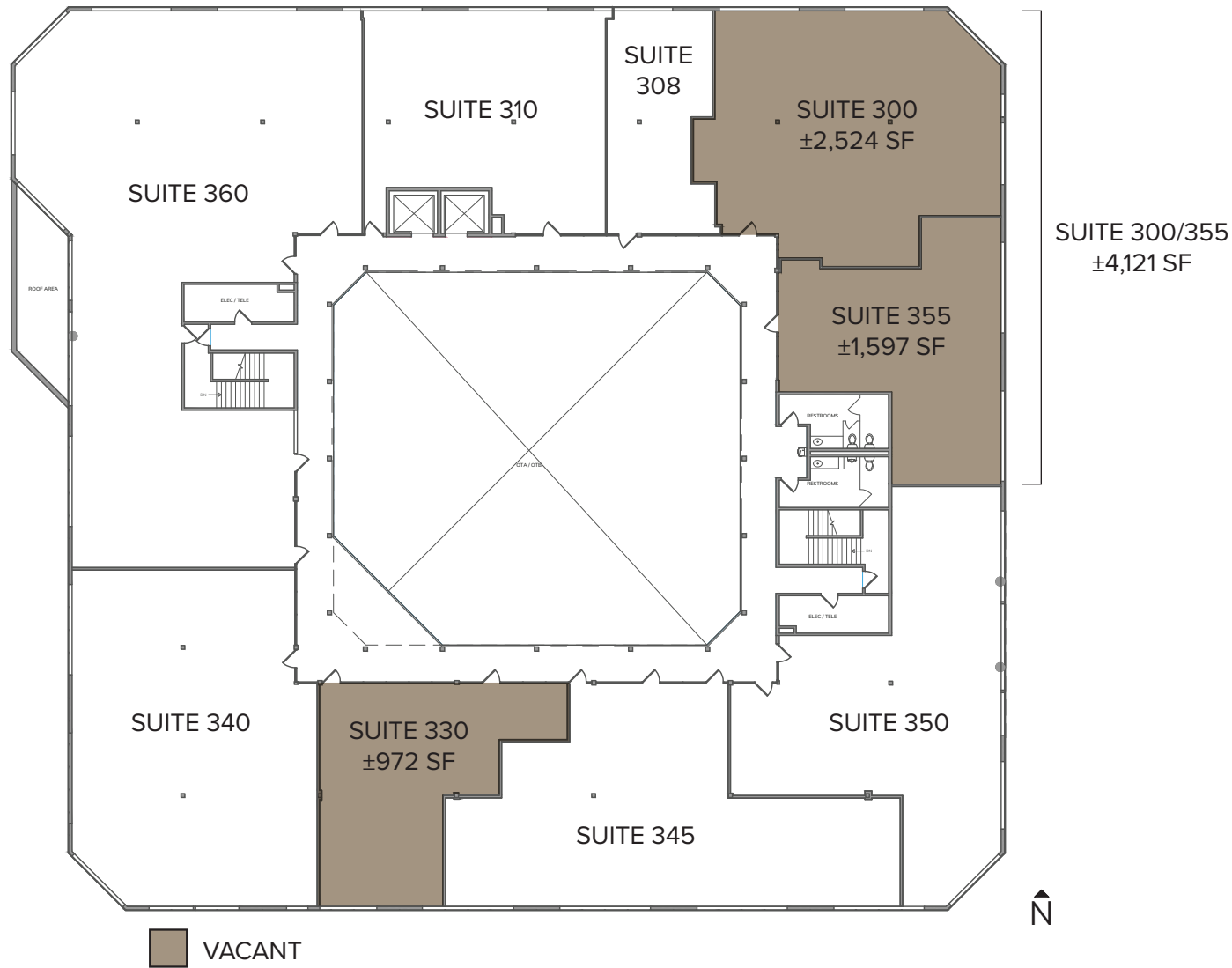
SUITE 220 | ±5,105 SQ. FT.



Eric Darnell
Senior Vice President
License ID# 01888743
949.790.3157
edarnell@leeirvine.com

Mia Pham
Senior Vice President
License ID# 01875144
949.790.3129
mpham@leeirvine.com

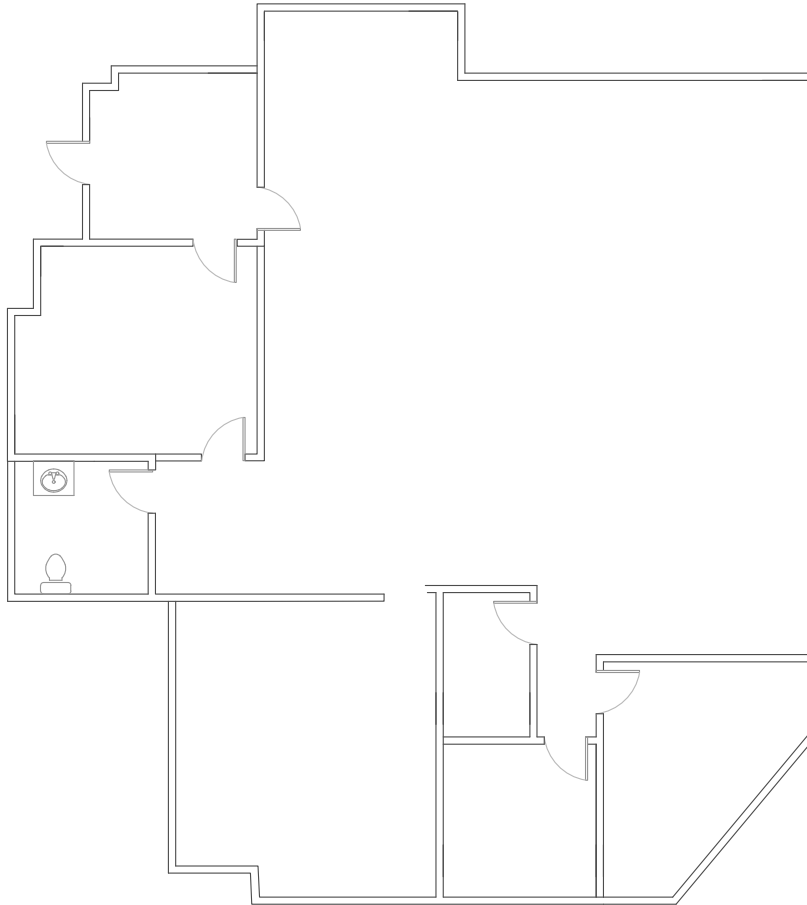
3RD FLOOR FLOOR PLAN



Eric Darnell
Senior Vice President
License ID# 01888743
949.790.3157
edarnell@leeirvine.com

Mia Pham
Senior Vice President
License ID# 01875144
949.790.3129
mpham@leeirvine.com

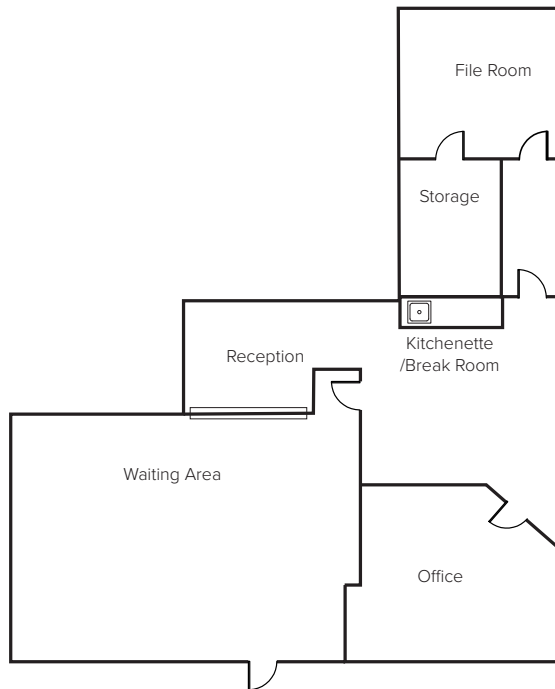
SUITE 300 | ±2,524 SQ. FT.



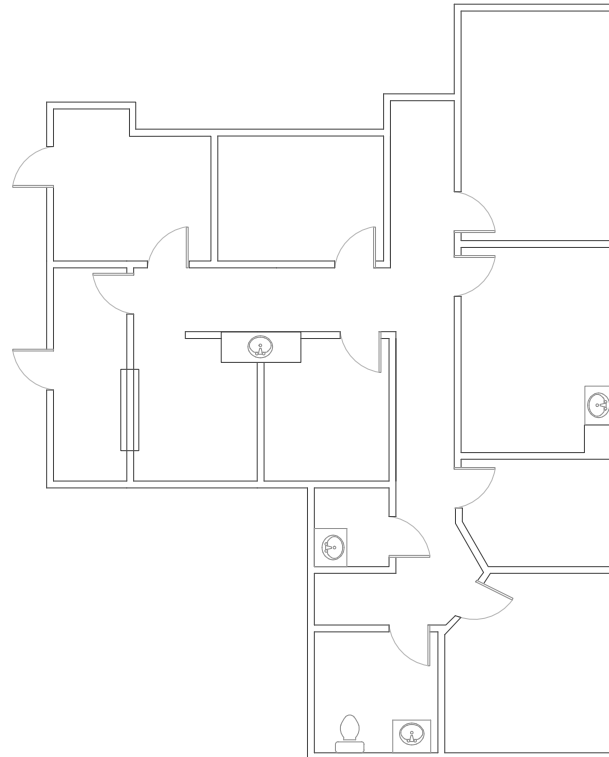
Eric Darnell
Senior Vice President
License ID# 01888743
949.790.3157
edarnell@leeirvine.com

Mia Pham
Senior Vice President
License ID# 01875144
949.790.3129
mpham@leeirvine.com

SUITE 330 | ±972 SQ. FT.



SUITE 355 | ±1,597 SQ. FT.



Eric Darnell
Senior Vice President
License ID# 01888743
949.790.3157
edarnell@leeirvine.com

Mia Pham
Senior Vice President
License ID# 01875144
949.790.3129
mpham@leeirvine.com



FOR LEASE

1401 N TUSTIN AVE

SANTA ANA, CA

FOR MORE INFORMATION, CONTACT:

Eric Darnell

Senior Vice President

License ID# 01888743

949.790.3157

edarnell@leeirvine.com

Mia Pham

Senior Vice President

License ID# 01875144

949.790.3129

mpham@leeirvine.com