

# 18101 VON KARMAN AVENUE

# LAKESHORE



SUITE	RSF	RATE	BUILD-OUT DESCRIPTION	360°	AVAILABILITY
220	5,158	\$3.25 FSG	13 offices, 1 conference room, 1 break room		Immediate
225	4,474	\$3.25 FSG	10 offices, 1 conference room, 1 break room		Immediate
220/225	9,632	\$3.25 FSG	23 offices, 2 conference rooms, 2 break rooms		Immediate
300	22,819	\$3.25 FSG	Shell Condition	360°	Immediate
400	22,944	\$3.25 FSG	19 offices, 3 conference rooms, 4 kitchens		Immediate
600	23,194	\$3.25 FSG	28 offices, 5 conference rooms, 1 kitchen, 2 break rooms, open area		10/1/2026
940	10,473	\$3.50 FSG	Open area		Immediate
1010	9,220	\$3.50 FSG	6 offices, 1 conference room, 1 kitchen		Immediate
1120	2,232	\$3.50 FSG	Open workspace, 2 offices, 1 conference room, 1 kitchen		Immediate
1160	3,815	\$3.50 FSG	Open workspace, 5 offices, 2 conference rooms, 1 kitchen, 1 copy room		Immediate
1120/1160	6,047	\$3.50 FSG	Open workspace, 7 offices, 3 conference rooms, 2 kitchens, 1 copy room		Immediate
1200	5,521	\$3.75 FSG	Spec suites, 11 offices, 1 conference room, 1 kitchen	360°	Immediate
1250	14,879	\$3.75 FSG	Open workspace, 27 offices, 3 conference rooms, kitchen, 2 restrooms, storage space	360°	Immediate
1400	23,194	\$3.75 FSG	Open workspace, 42 offices, 4 conference rooms, 1 kitchen, 2 restrooms, storage space, server room		Immediate
1500	23,194	\$3.75 FSG	38 offices, 4 conference rooms, 1 kitchen		Immediate
1900	22,142	Negotiable	Shell Condition		Immediate

**ROBERT LAMBERT**  
 949.930.9212  
 robert.lambert@cushwake.com  
 Lic. No. 01758074

**RICK KAPLAN**  
 949.955.7643  
 rick.kaplan@cushwake.com  
 Lic. No. 00863069

**MAT MAT GILES**  
 562.310.2692  
 matmat.giles@cushwake.com  
 Lic. No. 02181091



# LAKESHORE

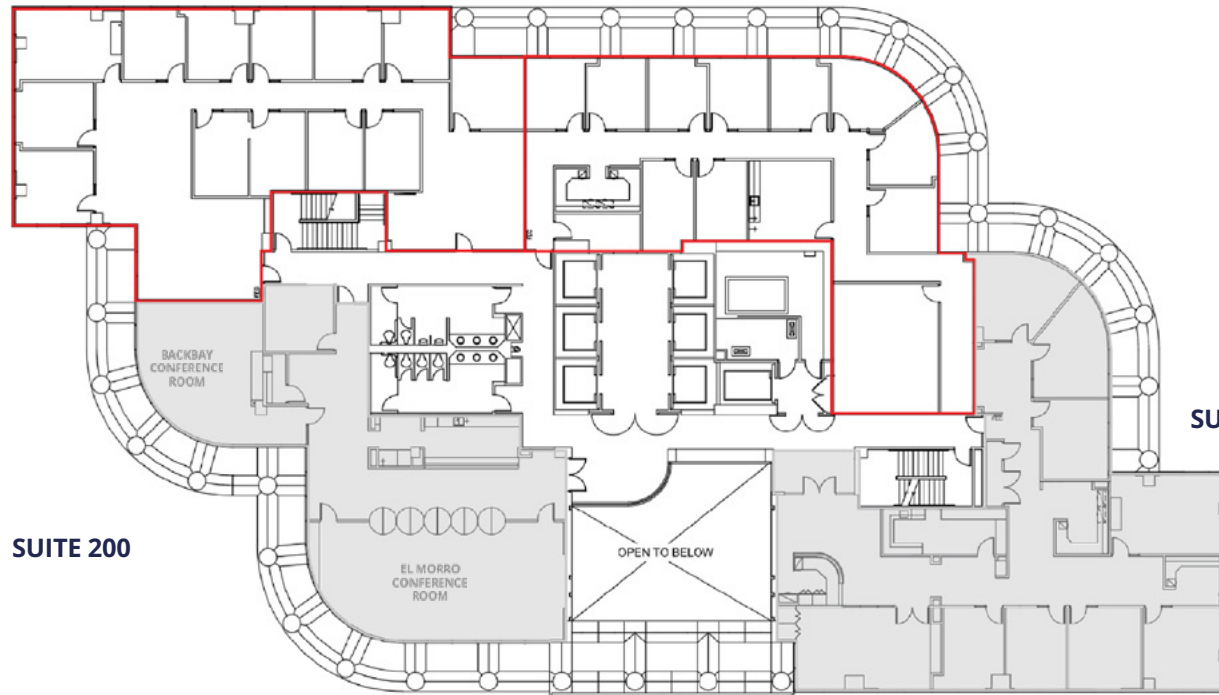
18101 VON KARMAN AVENUE

*2<sup>nd</sup> floor*



**"AVAILABLE"**  
SUITE 220 | 5,158 RSF

**"AVAILABLE"**  
SUITE 225 | 4,474 RSF



405  
FREIGHTWAY



SUITE 230 | 5,444 RSF

SUITE 200

AIRPORT



SCALE: N.T.S.



**ROBERT LAMBERT**  
949.930.9212  
robert.lambert@cushwake.com  
Lic. No. 01758074

**RICK KAPLAN**  
949.955.7643  
rick.kaplan@cushwake.com  
Lic. No. 00863069

**MAT MAT GILES**  
562.310.2692  
matmat.giles@cushwake.com  
Lic. No. 02181091



# LAKESHORE

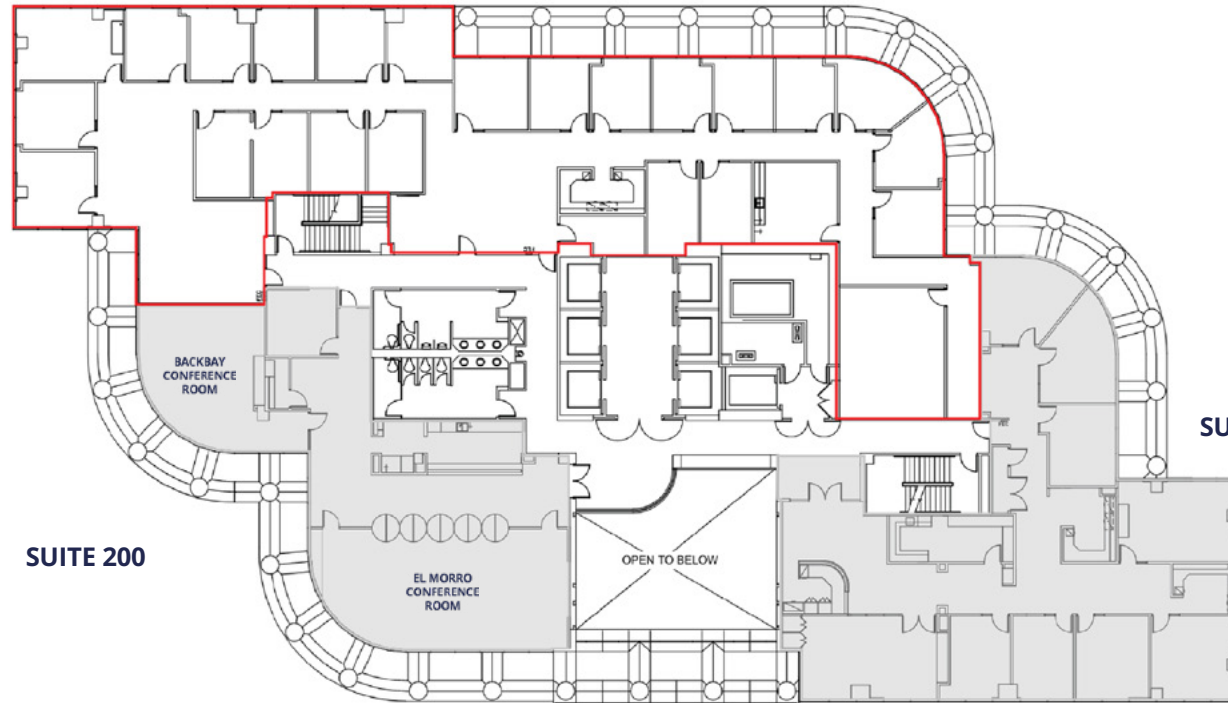
18101 VON KARMAN AVENUE

*2<sup>nd</sup> floor*

**"AVAILABLE" SUITES**  
220 & 225 | 9,632 RSF



 **405** FREEWAY



**SUITE 200**

**SUITE 230 | 5,444 RSF**

SCALE: N.T.S.



**AIRPORT**



**ROBERT LAMBERT**  
949.930.9212  
robert.lambert@cushwake.com  
Lic. No. 01758074

**RICK KAPLAN**  
949.955.7643  
rick.kaplan@cushwake.com  
Lic. No. 00863069

**MAT MAT GILES**  
562.310.2692  
matmat.giles@cushwake.com  
Lic. No. 02181091



# LAKE SHORE

18101 VON KARMAN AVENUE

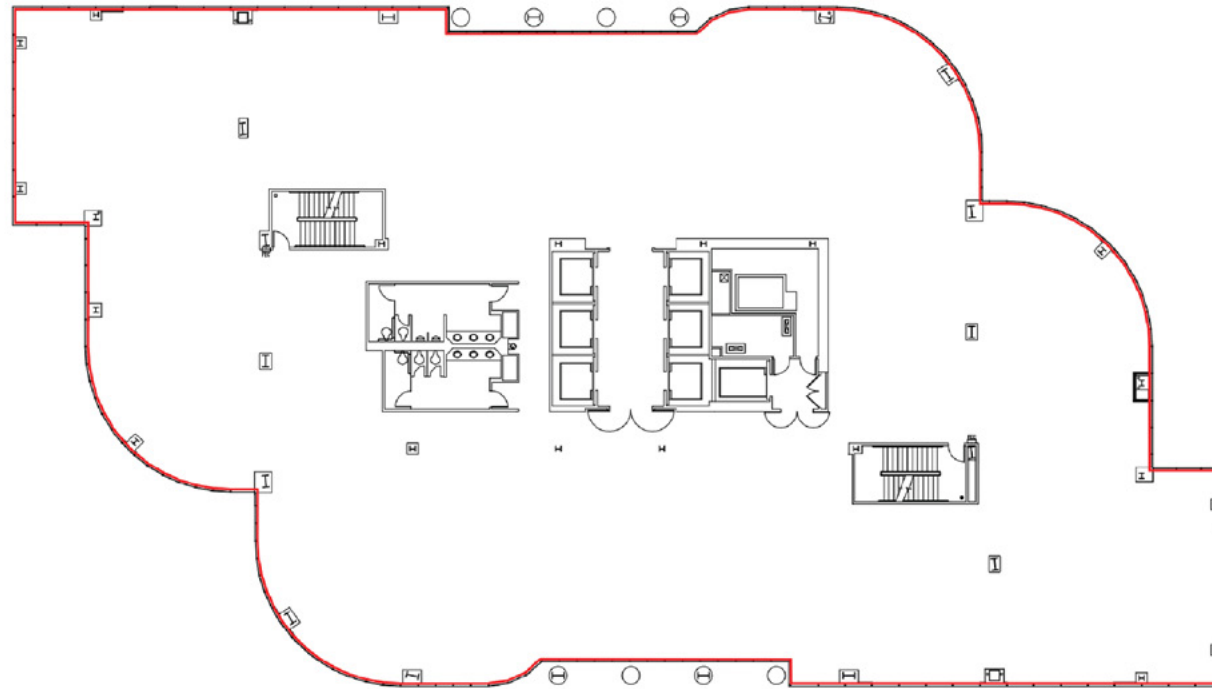
*3<sup>rd</sup> floor*



**"AVAILABLE"**  
SUITE 300 | 22,819 RSF



  
405  
FREEWAY



SCALE: N.T.S.



AIRPORT



**ROBERT LAMBERT**  
949.930.9212  
robert.lambert@cushwake.com  
Lic. No. 01758074

**RICK KAPLAN**  
949.955.7643  
rick.kaplan@cushwake.com  
Lic. No. 00863069

**MAT MAT GILES**  
562.310.2692  
matmat.giles@cushwake.com  
Lic. No. 02181091



# LAKESHORE

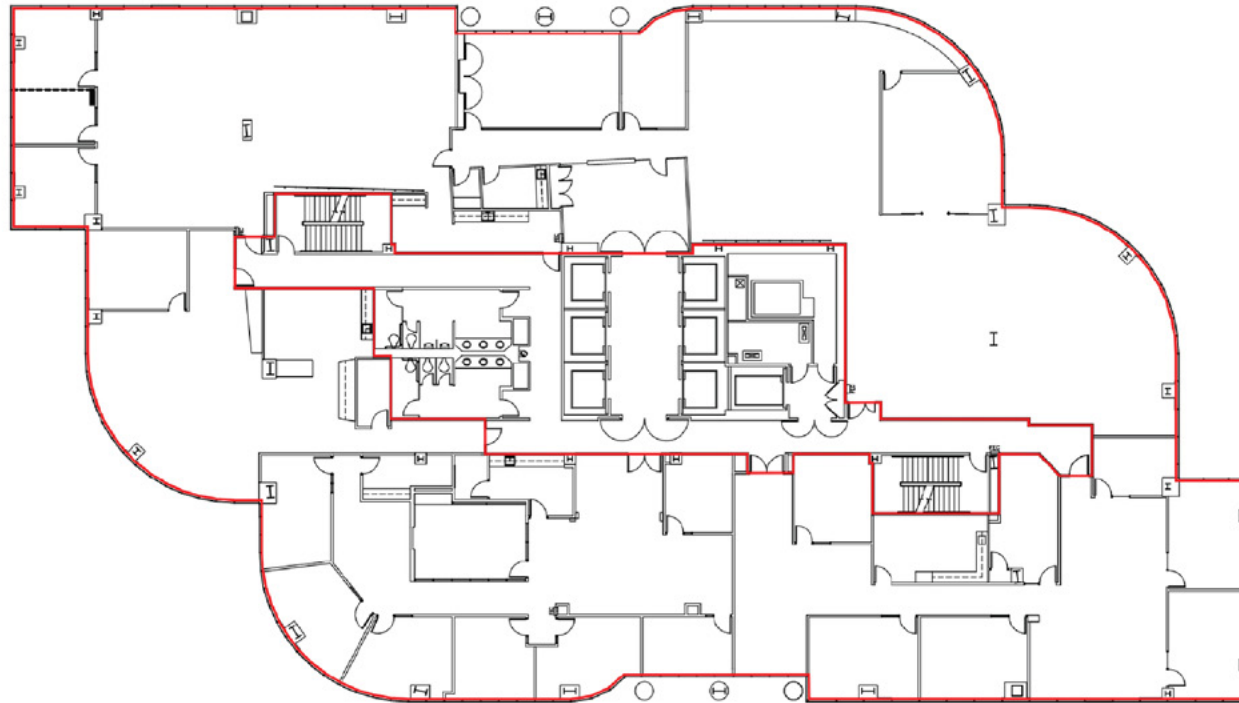
18101 VON KARMAN AVENUE

4<sup>th</sup> floor

"AVAILABLE"  
SUITE 400 | 22,944 RSF



405  
FREEWAY



SCALE: N.T.S.



AIRPORT



**ROBERT LAMBERT**  
949.930.9212  
robert.lambert@cushwake.com  
Lic. No. 01758074

**RICK KAPLAN**  
949.955.7643  
rick.kaplan@cushwake.com  
Lic. No. 00863069

**MAT MAT GILES**  
562.310.2692  
matmat.giles@cushwake.com  
Lic. No. 02181091



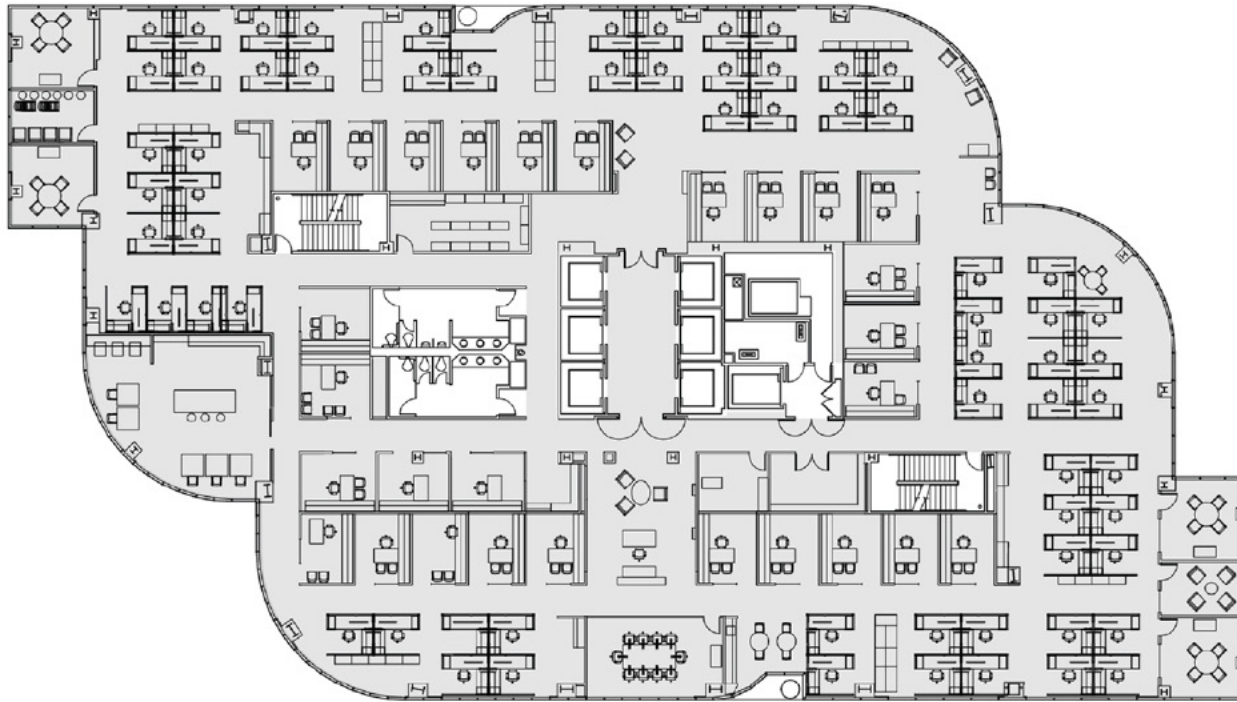
# LAKESHORE

18101 VON KARMAN AVENUE

6<sup>th</sup> floor

AVAILABLE 10/1/2026  
SUITE 600 | 23,194 RSF

405  
FREEWAY



SCALE: N.T.S.



AIRPORT



ROBERT LAMBERT

949.930.9212

robert.lambert@cushwake.com

Lic. No. 01758074

RICK KAPLAN

949.955.7643

rick.kaplan@cushwake.com

Lic. No. 00863069

MAT MAT GILES

562.310.2692

matmat.giles@cushwake.com

Lic. No. 02181091



# LAKESHORE

18101 VON KARMAN AVENUE

9<sup>th</sup> floor



TENANT LOUNGE

SUITE 970 | 2,825 RSF

SUITE 980 | 2,605 RSF

SUITE 910 | 2,539 RSF

SUITE 920 | 2,473 RSF

SUITE 960 | 2,280 RSF

"AVAILABLE"  
SUITE 940 | 10,473 RSF

AIRPORT

SCALE: N.T.S.



405  
FREIGHTWAY



ROBERT LAMBERT  
949.930.9212  
robert.lambert@cushwake.com  
Lic. No. 01758074

RICK KAPLAN  
949.955.7643  
rick.kaplan@cushwake.com  
Lic. No. 00863069

MAT MAT GILES  
562.310.2692  
matmat.giles@cushwake.com  
Lic. No. 02181091



# LAKESHORE

18101 VON KARMAN AVENUE

*10<sup>th</sup> floor*



SUITE 1000 | 10,281 RSF

**"AVAILABLE"**  
SUITE 1010 | 9,220 RSF



SUITE 1050 | 3,693 RSF

405  
FREIGHTWAY



AIRPORT



SCALE: N.T.S.



ROBERT LAMBERT  
949.930.9212  
robert.lambert@cushwake.com  
Lic. No. 01758074

RICK KAPLAN  
949.955.7643  
rick.kaplan@cushwake.com  
Lic. No. 00863069

MAT MAT GILES  
562.310.2692  
matmat.giles@cushwake.com  
Lic. No. 02181091



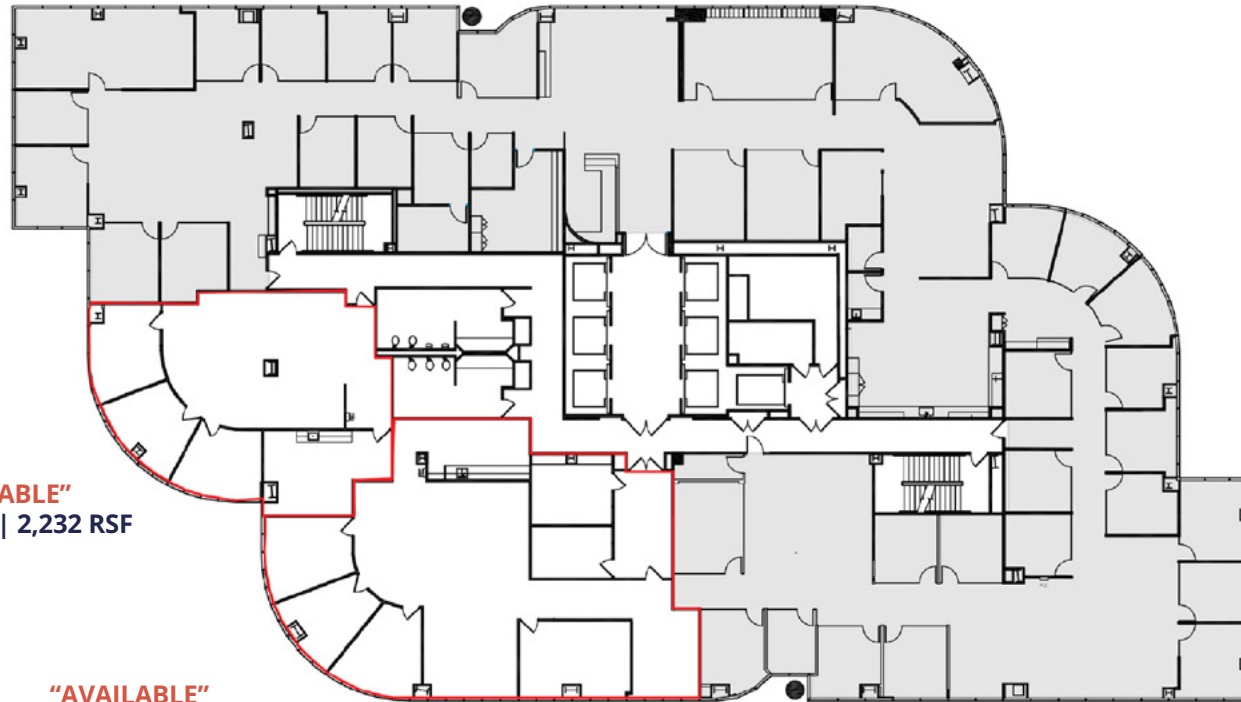
# LAKESHORE

18101 VON KARMAN AVENUE

*11<sup>th</sup> floor*



SUITE 1100 | 17,148 RSF



**"AVAILABLE"**  
SUITE 1120 | 2,232 RSF

**"AVAILABLE"**  
SUITE 1160 | 3,815 RSF

405  
FREEWAY



AIRPORT



SCALE: N.T.S.



**ROBERT LAMBERT**  
949.930.9212  
robert.lambert@cushwake.com  
Lic. No. 01758074

**RICK KAPLAN**  
949.955.7643  
rick.kaplan@cushwake.com  
Lic. No. 00863069

**MAT MAT GILES**  
562.310.2692  
matmat.giles@cushwake.com  
Lic. No. 02181091



# LAKESHORE

18101 VON KARMAN AVENUE

*12<sup>th</sup> floor*

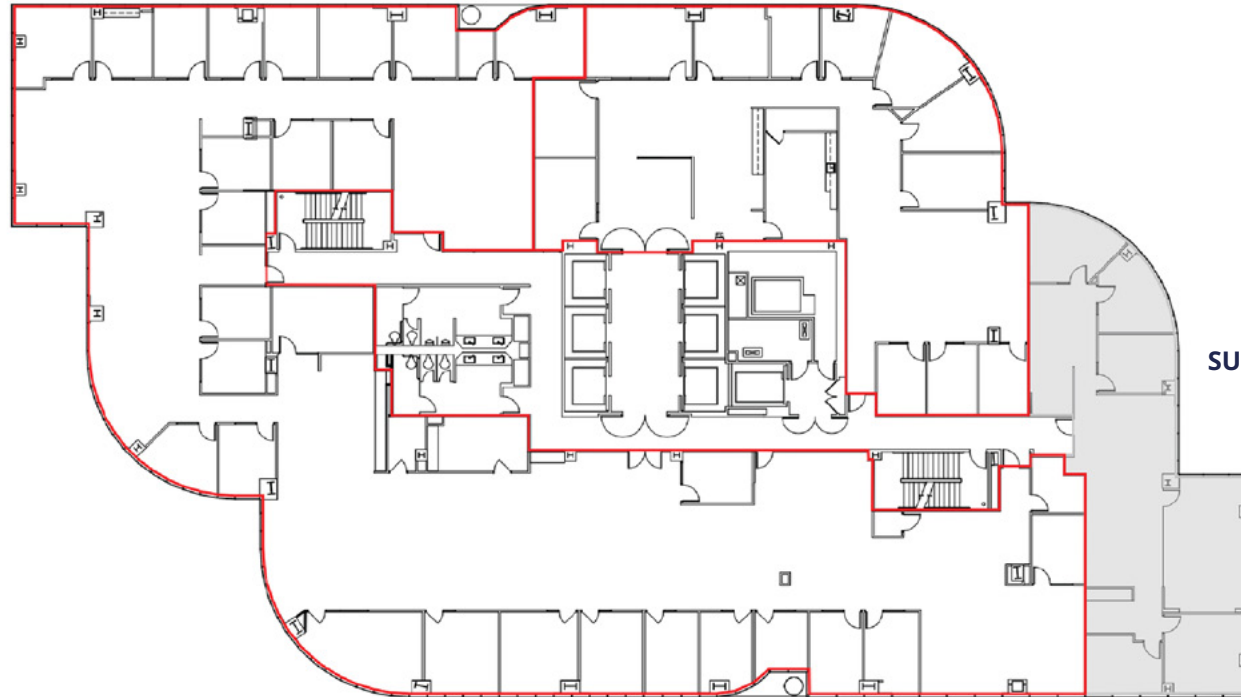
**"AVAILABLE"**  
SUITE 1250 | 14,879 RSF



**"AVAILABLE"**  
SUITE 1200 | 5,521 RSF



SUITE 1220 | 2,794 RSF



405  
FREEWAY



AIRPORT



SCALE: N.T.S.



**ROBERT LAMBERT**

949.930.9212

robert.lambert@cushwake.com

Lic. No. 01758074

**RICK KAPLAN**

949.955.7643

rick.kaplan@cushwake.com

Lic. No. 00863069

**MAT MAT GILES**

562.310.2692

matmat.giles@cushwake.com

Lic. No. 02181091



# LAKESHORE

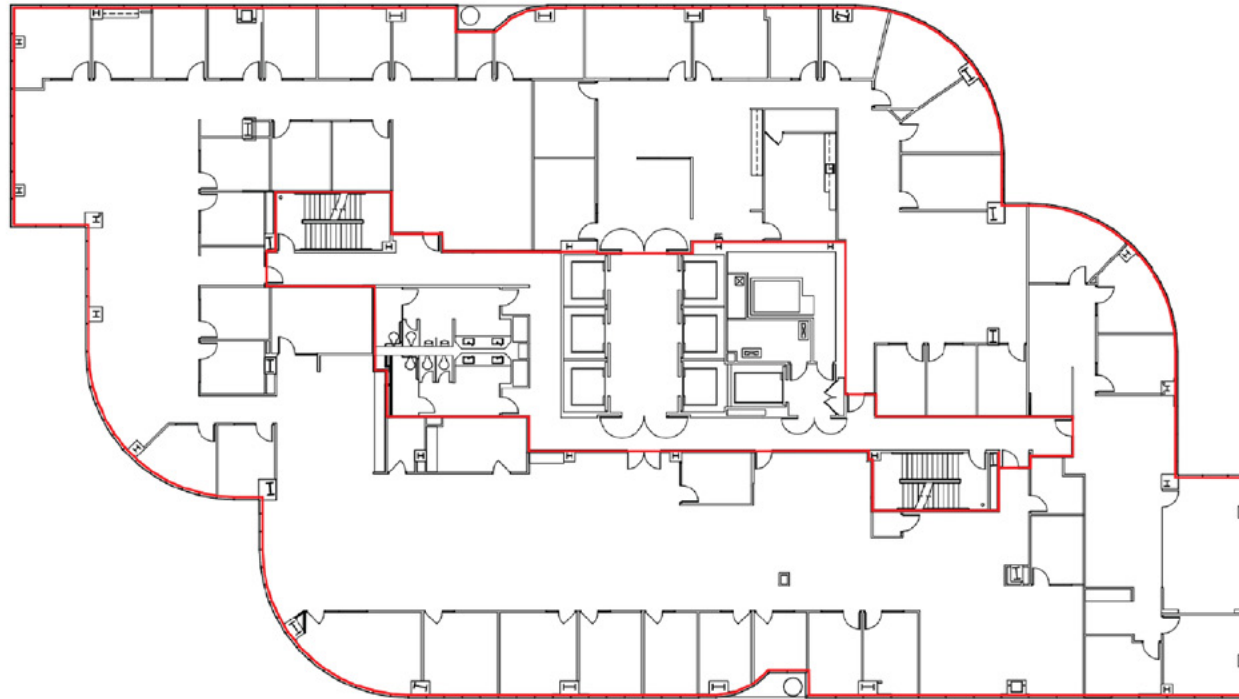
18101 VON KARMAN AVENUE

*12<sup>th</sup> floor*



**"AVAILABLE"**  
SUITE 1200 | 23,194 RSF

  
405  
FREEWAY



SCALE: N.T.S.



AIRPORT



**ROBERT LAMBERT**  
949.930.9212  
robert.lambert@cushwake.com  
Lic. No. 01758074

**RICK KAPLAN**  
949.955.7643  
rick.kaplan@cushwake.com  
Lic. No. 00863069

**MAT MAT GILES**  
562.310.2692  
matmat.giles@cushwake.com  
Lic. No. 02181091



# LAKESHORE

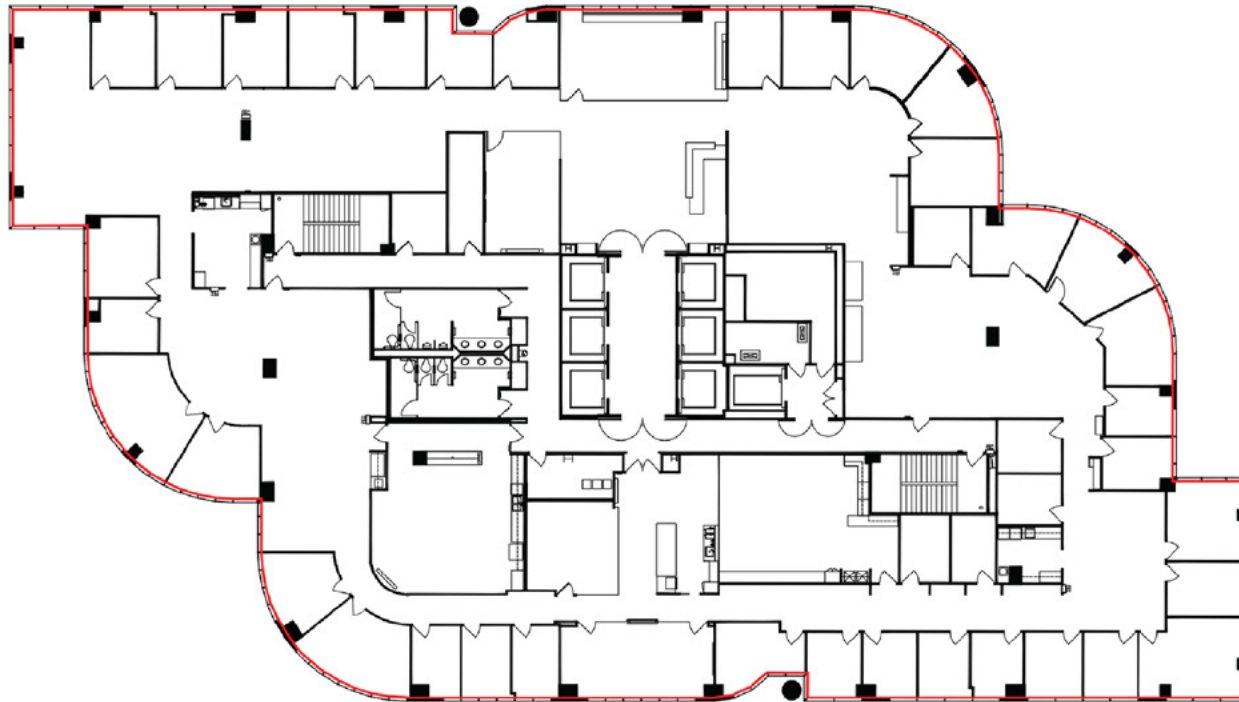
18101 VON KARMAN AVENUE

*14<sup>th</sup> floor*



**"AVAILABLE"**  
SUITE 1400 | 23,194 RSF

405  
FREIGHTWAY



AIRPORT



SCALE: N.T.S.



**ROBERT LAMBERT**  
949.930.9212  
robert.lambert@cushwake.com  
Lic. No. 01758074

**RICK KAPLAN**  
949.955.7643  
rick.kaplan@cushwake.com  
Lic. No. 00863069

**MAT MAT GILES**  
562.310.2692  
matmat.giles@cushwake.com  
Lic. No. 02181091



# LAKESHORE

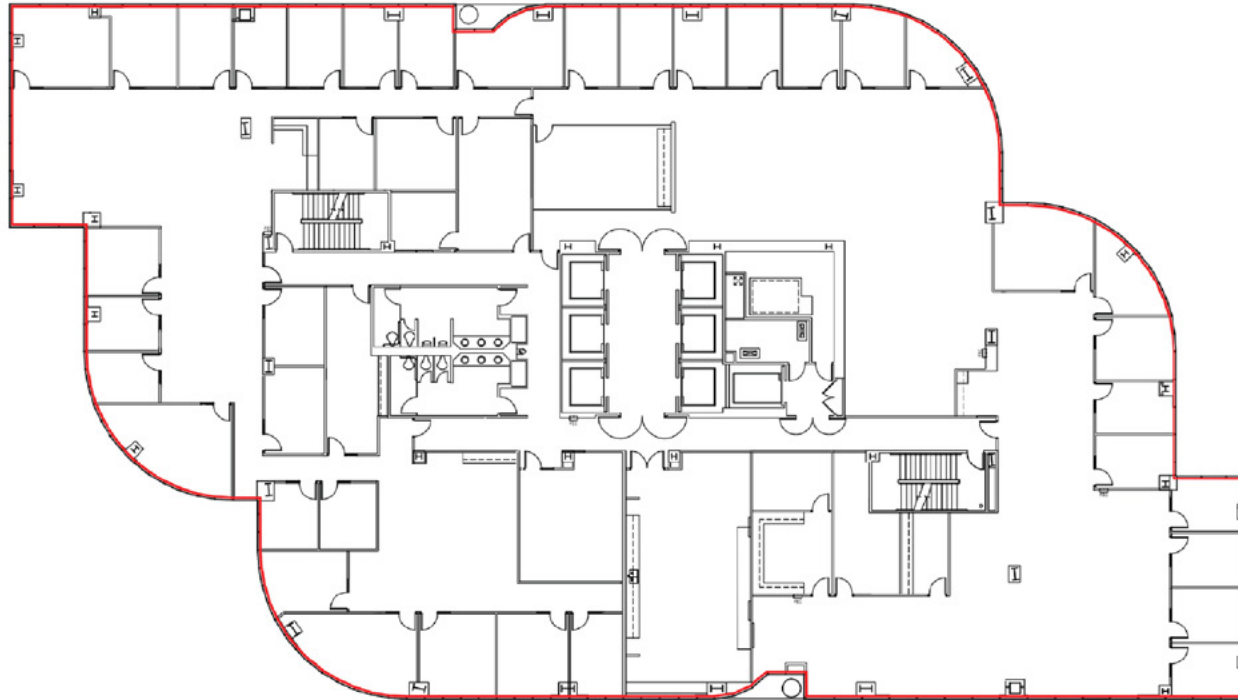
18101 VON KARMAN AVENUE

*15<sup>th</sup> floor*

**"AVAILABLE"**  
SUITE 1500 | 23,194 RSF



  
405  
FREEWAY



SCALE: N.T.S.



AIRPORT



**ROBERT LAMBERT**  
949.930.9212  
robert.lambert@cushwake.com  
Lic. No. 01758074

**RICK KAPLAN**  
949.955.7643  
rick.kaplan@cushwake.com  
Lic. No. 00863069

**MAT MAT GILES**  
562.310.2692  
matmat.giles@cushwake.com  
Lic. No. 02181091



# LAKE SHORE

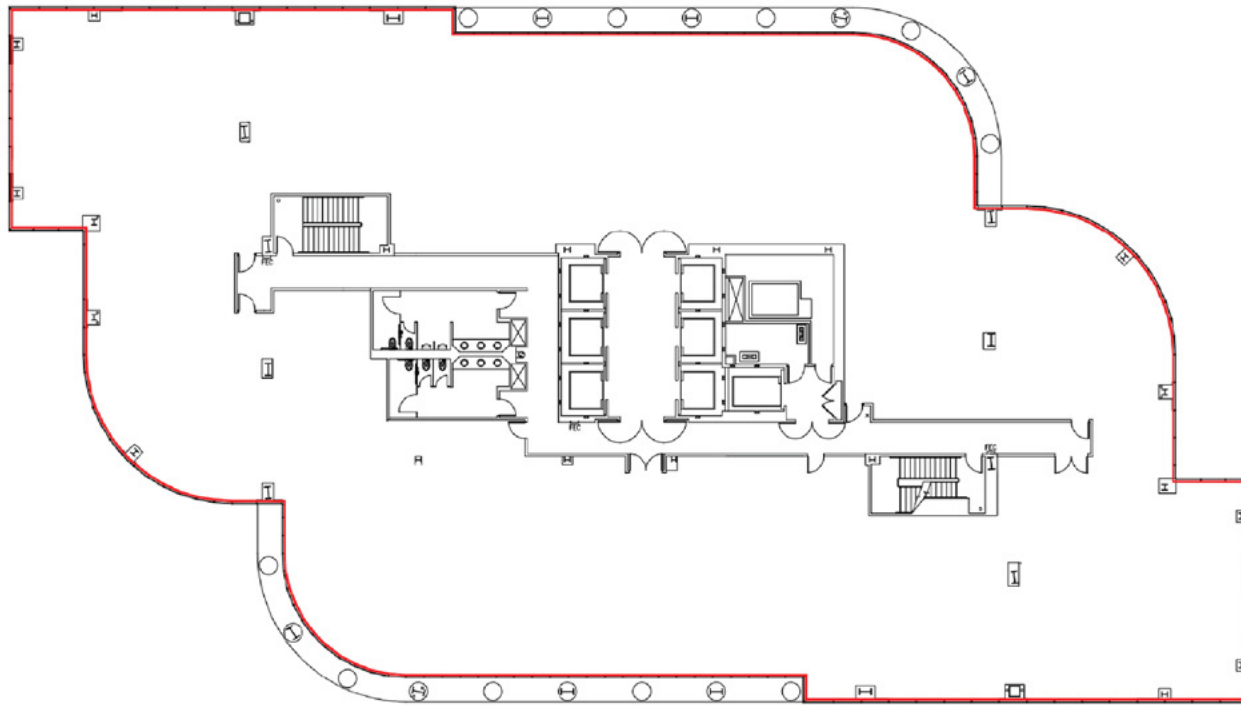
18101 VON KARMAN AVENUE

*19<sup>th</sup> floor*



**"AVAILABLE"**  
SUITE 1900 | 22,142 RSF

  
405  
FREEWAY



SCALE: N.T.S.



AIRPORT



**ROBERT LAMBERT**  
949.930.9212  
robert.lambert@cushwake.com  
Lic. No. 01758074

**RICK KAPLAN**  
949.955.7643  
rick.kaplan@cushwake.com  
Lic. No. 00863069

**MAT MAT GILES**  
562.310.2692  
matmat.giles@cushwake.com  
Lic. No. 02181091

