

10-16

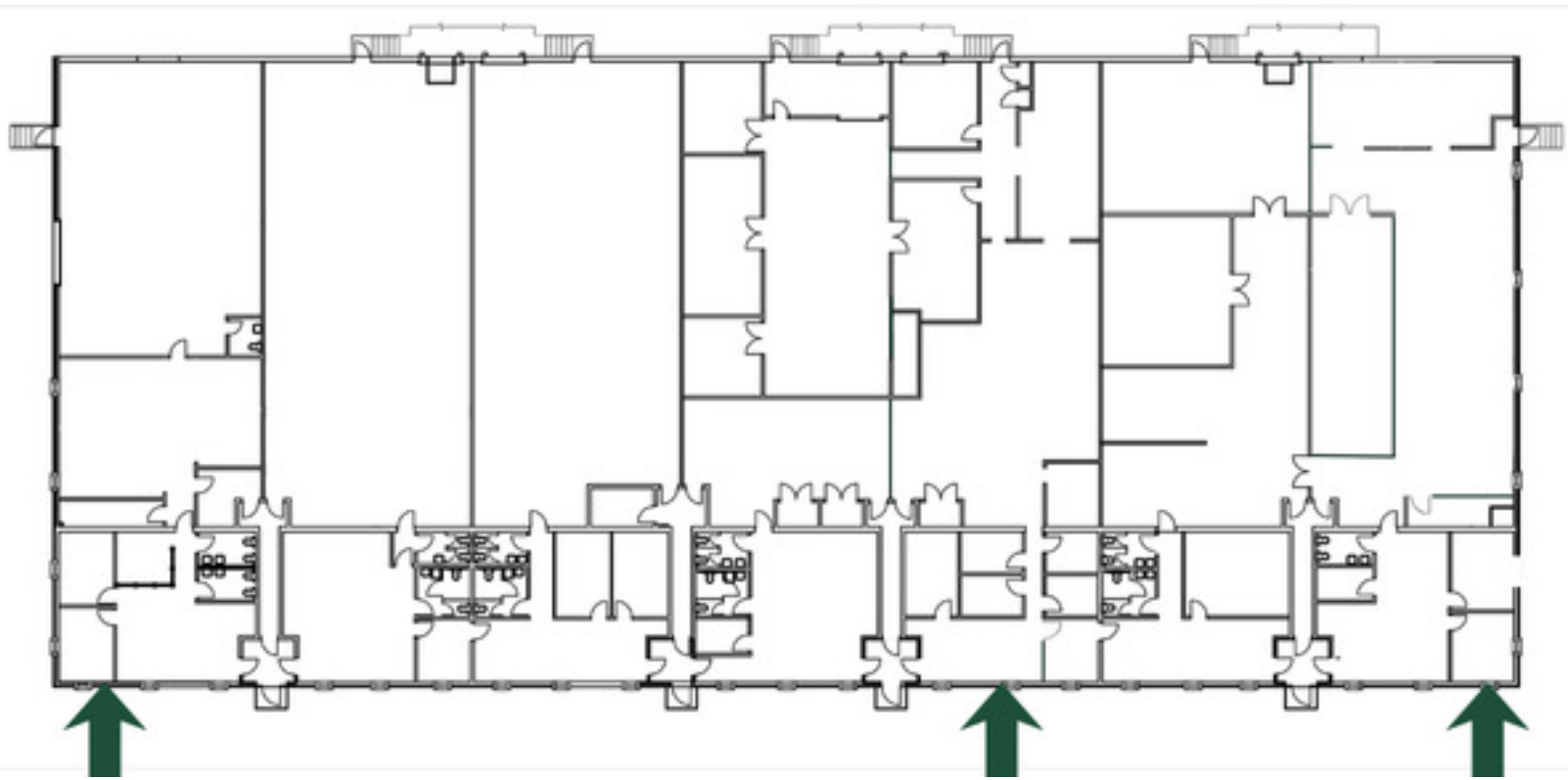
ACTON, MA CRAIG ROAD



3 Suites, Each 4,800 SF For Lease

SUMMARY / SPECIFICATIONS

10-16 CRAIG RD ACTON, MA



PROPERTY DESCRIPTION

10-16 Craig Road is in Acton Technology Park, a master-planned park offering tenants identity, amenities, and expansion capability. This modern, single-story facility is fully air-conditioned. The building is situated in a campus-style setting accented by green lawns, mature trees, and flowering shrubs and bulbs.

Park tenants range from biotech R&D to warehouse, manufacturing, and distribution. The park is located immediately off Route 2, halfway between Interstate Routes 495, 95, and 128.

PROPERTY HIGHLIGHTS

- Year Built: 1976
- Total Size: 33,600 SF
- Available: 3 Suites
- Land: 5.06 Acres
- Type: Flex/Light MFG
- Stories: One (1)
- Construction: Masonry & Brick
- Flooring: 5' concrete slab, white vinyl composite tile in warehouse area
- Roof: Rubber
- Ceiling Height: 16'
- Parking: 48 Spaces
- Loading Dock: Three (3)
- Sprinklers: Wet System
- Utilities: City Water & Sewer
- Power: 200 Amps per unit/277-480V/3 Phase 4-wire service
- Internet: Verizon FIOS

SPACES	LEASE RATE	SPACE SIZE
Suite 1	Negotiable	4,800 SF
Suite 2	Negotiable	4,800 SF
Suite 3	Negotiable	4,800 SF

ROB MCGARRY

Vice President
Mobile: 978.209.3211
rob@obriencommercial.com

PROPERTY / LOCATION

10-16 CRAIG RD ACTON, MA



ROB MCGARRY
Vice President
Mobile: 978.209.3211
rob@obriencommercial.com

COMMERCIAL
O'BRIEN
PROPERTIES, INC



10-16 CRAIG ROAD

ACTON, MA



ROB MCGARRY

Vice President

Mobile: 978.209.3211

rob@obriencommercial.com

We obtained the information above from sources we believe to be reliable. However, we have not verified its accuracy and make no guarantee, warranty or representation about it. It is submitted subject to the possibility of errors, omissions, change of price, rental or other conditions, prior sale, lease or financing, or withdrawal without notice. We include projections, opinions, assumptions or estimates for example only, and they may not represent current or future performance of the property. You and your tax and legal advisors should conduct your own investigation of the property and transaction.