

168 Banker Street



MRG

**168 Banker Street
Brooklyn, NY 11222**

A New Commercial Anchor for Williamsburg–Greenpoint

MRG

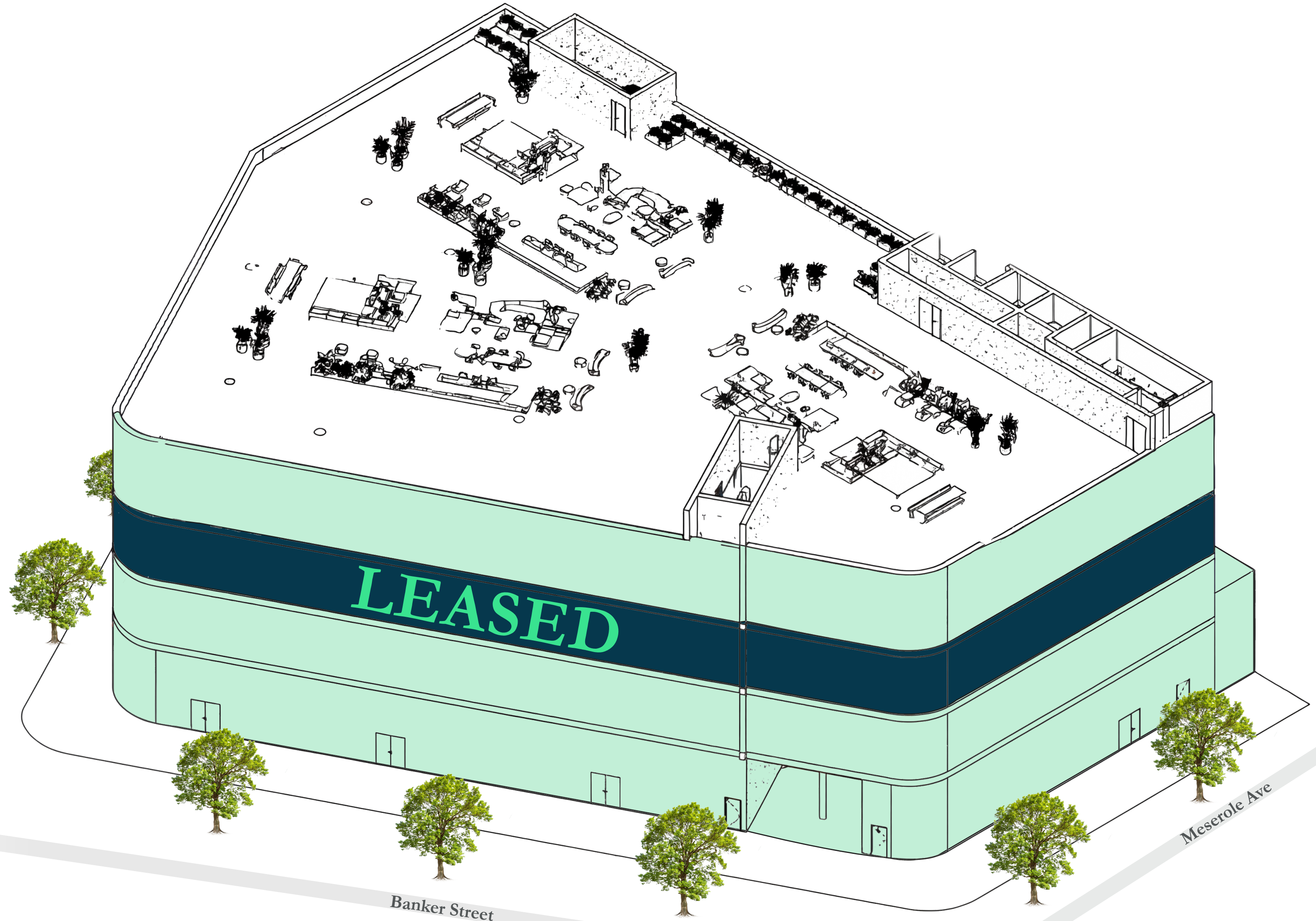
168 Banker is a newly developed 80,000-square-foot commercial property in the heart of Williamsburg/Greenpoint, where forward-thinking brands are planting their flag and shaping North Brooklyn's next chapter. With flexible floor plates, polished industrial character, and immediate access to parks, hotels, and the waterfront, 168 Banker delivers a seamless blend of work, lifestyle, and neighborhood energy that today's tenants demand.

- 80,000 SF of Next-Generation Commercial Space
- Expansive, Efficient Floorplates for Modern Tenants
- Soaring 20–23 ft Exposed Ceilings
- Rooftop Space Available
- Light-Filled Interiors with Flexible Planning
- Authentic North Brooklyn Setting Steps from Parks, Hotels, and Dining



3D Floor Plan

- Rooftop
20,000 SF
- 4th Floor
20,000 SF
- 3rd Floor
LEASED
- 2nd Floor
20,000 SF
- Ground Floor Retail
13,550 SF



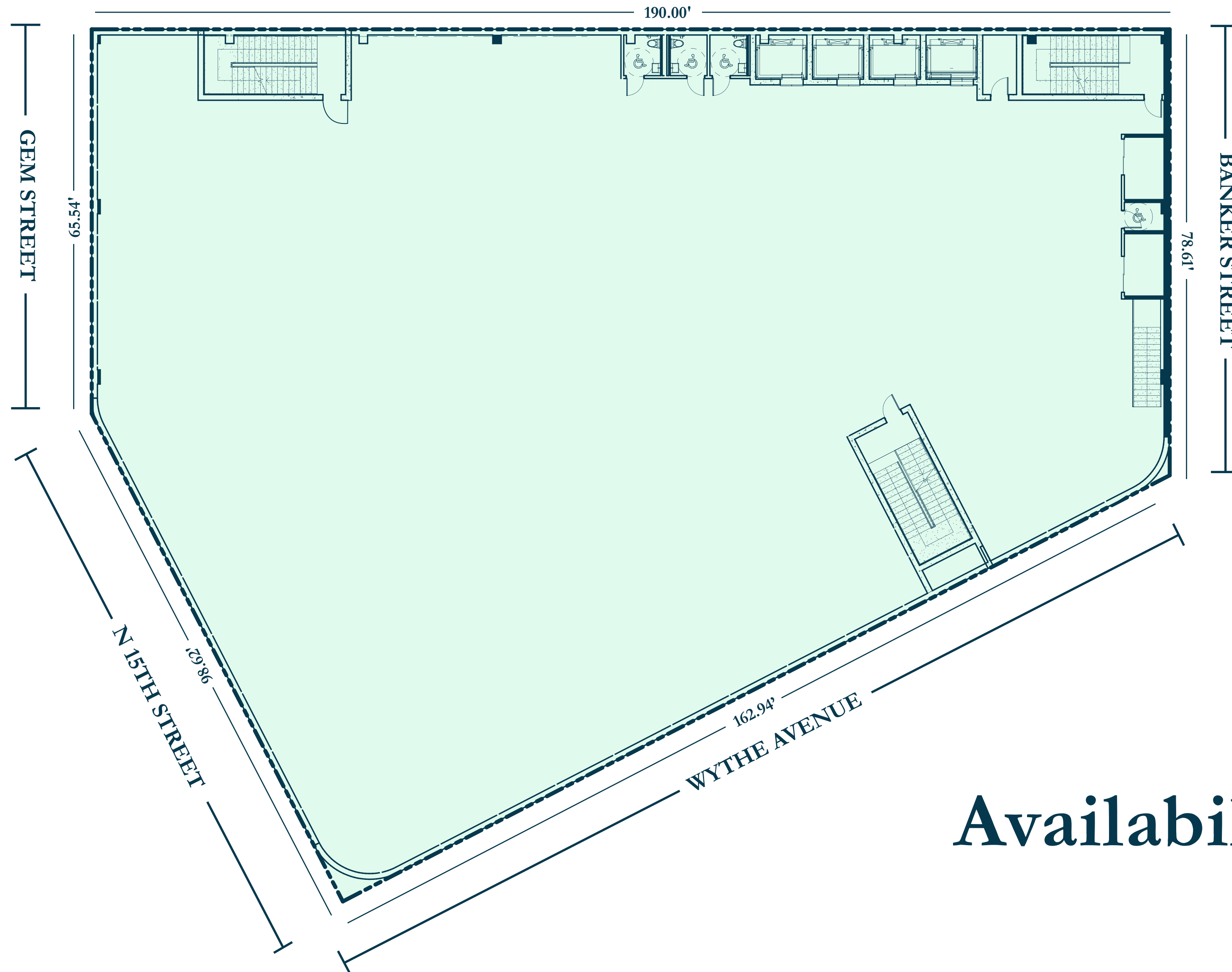
Ground Floor (Retail) Plan



Availability: 13,550 SF

2nd Floor Plan

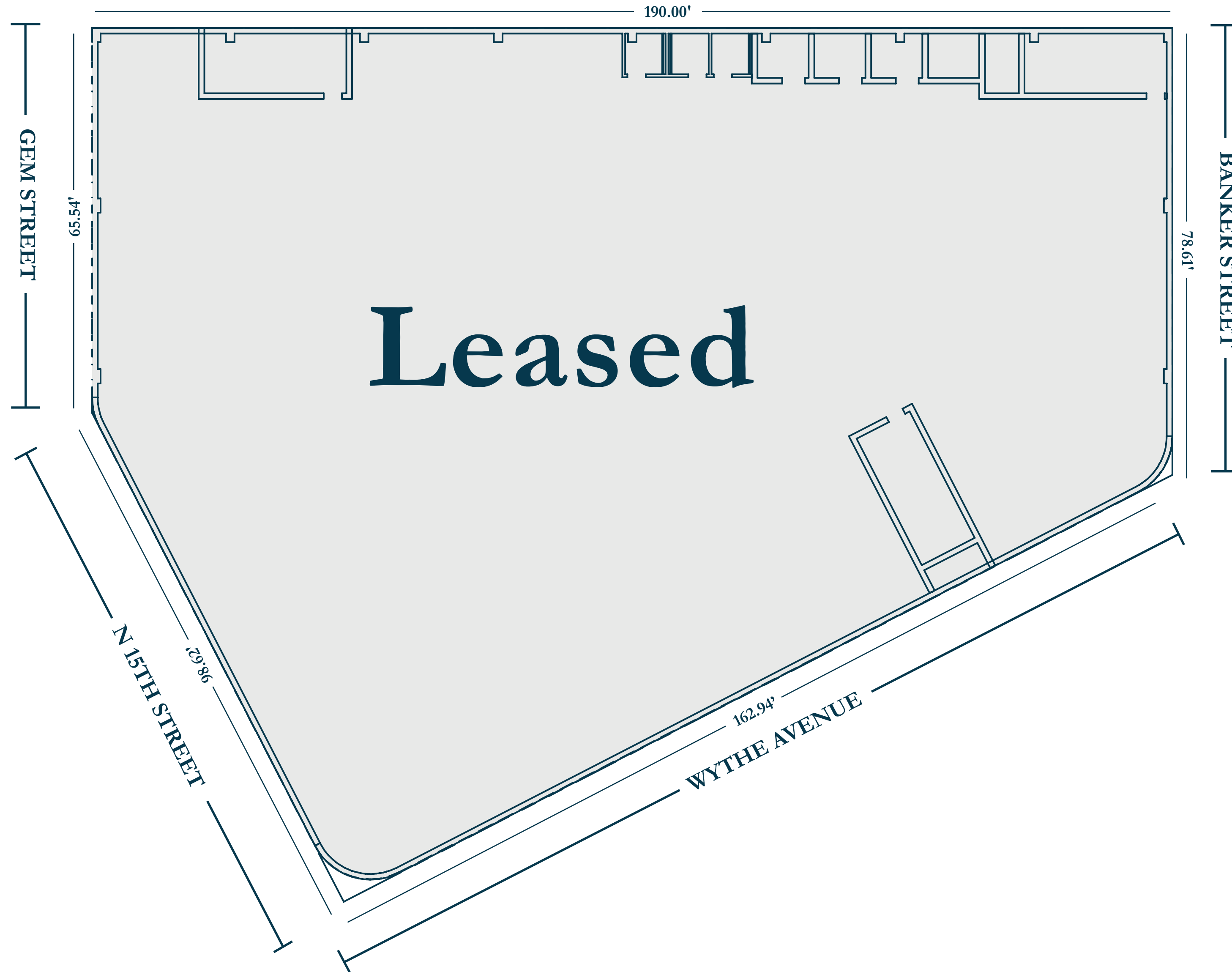
MRG



Availability: 20,000 SF

3rd Floor Plan

MRG



4th Floor Plan



Availability: 20,000 SF

Roof Top Floor Plan

MRG



Availability: 20,000 SF

Neighborhood Map

MRG



These Companies Call This Neighborhood Home

MRG



This Neighborhood Has It All

MRG

2,000

hotel rooms in
Williamsburg
and greenpoint

3

Subway lines
(L, G, J)
within minutes

200

bars and restaurants,
from waterfront rooftops
to michelin star dining

7

Michelin-starred
restaurants
in the area

50

acres of major parkland
serving Williamsburg
and Greenpoint

2.7

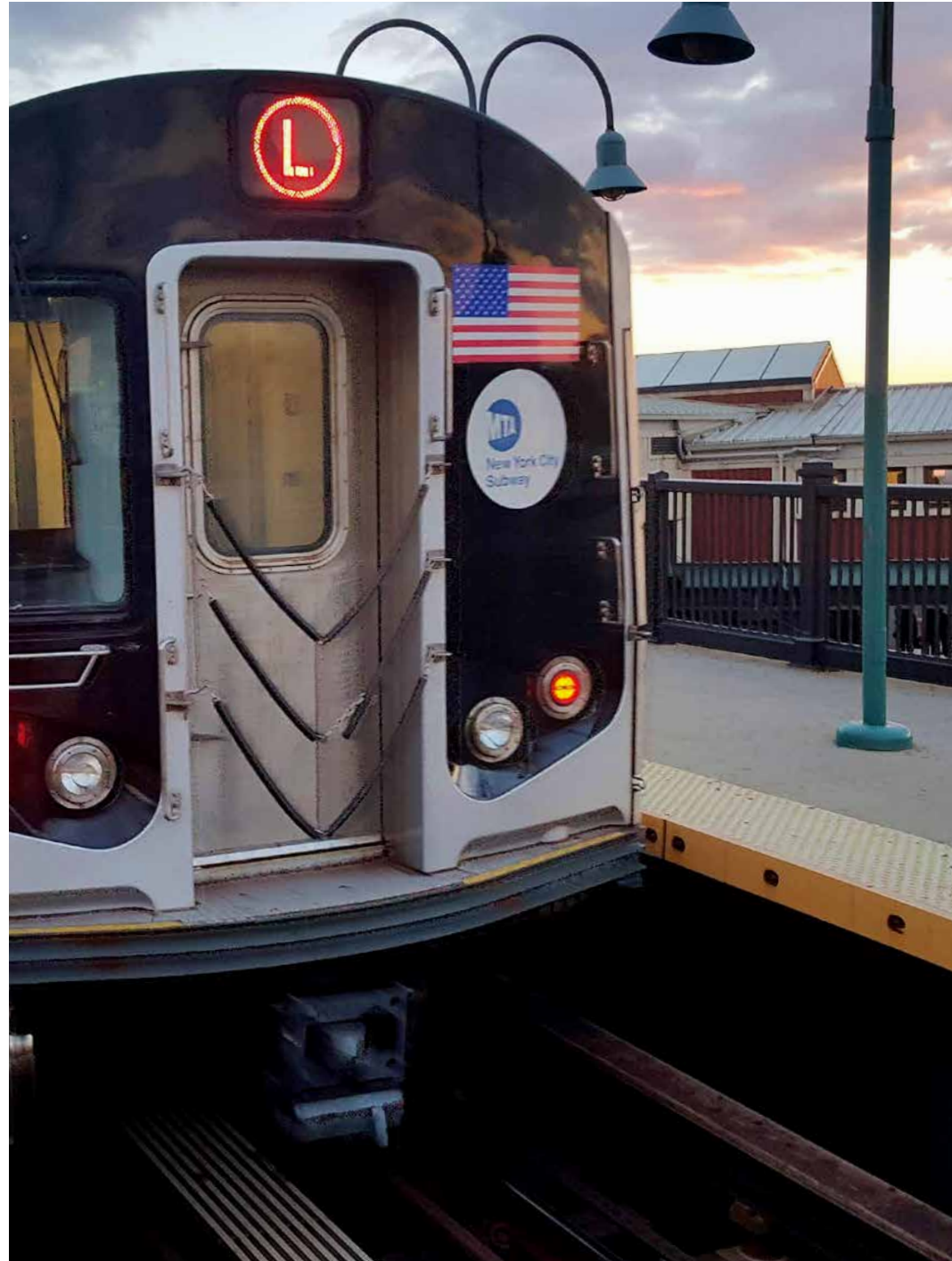
Million
brooklyn
population

Over
1M

SF of
office space
in the area

150k

average
household
income



Nearby Subway Lines

L Bedford Ave
8 Min Walk

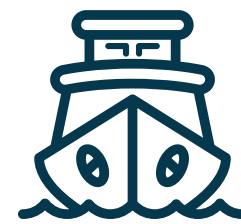
G Nassau Ave
7 Min Walk



Nearby Bus Lines

B32 Kent Ave & N 14 St
<1 Min Walk

B62 Bedford & N 11 St
3 Min Walk



Nearby Ferry Lines

East River NYC Ferry (N Williamsburg)
9 Min Walk



Citi Bike Locations

Wythe and N 13 St
0 Min Walk

N 12 St & Bedford Ave
3 Min Walk

Or take your own bike door-to-door and park in our secure bike room



275 Space Onsite Parking Garage with Valet
and 10 EV Charging Stations

MRC

www.mrgny.com

168 Banker Street Brooklyn, NY 11222

AVI AKIVA

212-314-4684 Ext. 101

Avi@mrgny.com

MORRIS MISHAN

917-250-8303

Morrism@mrgny.com

YONI HADAR

Yoni@delshah.com