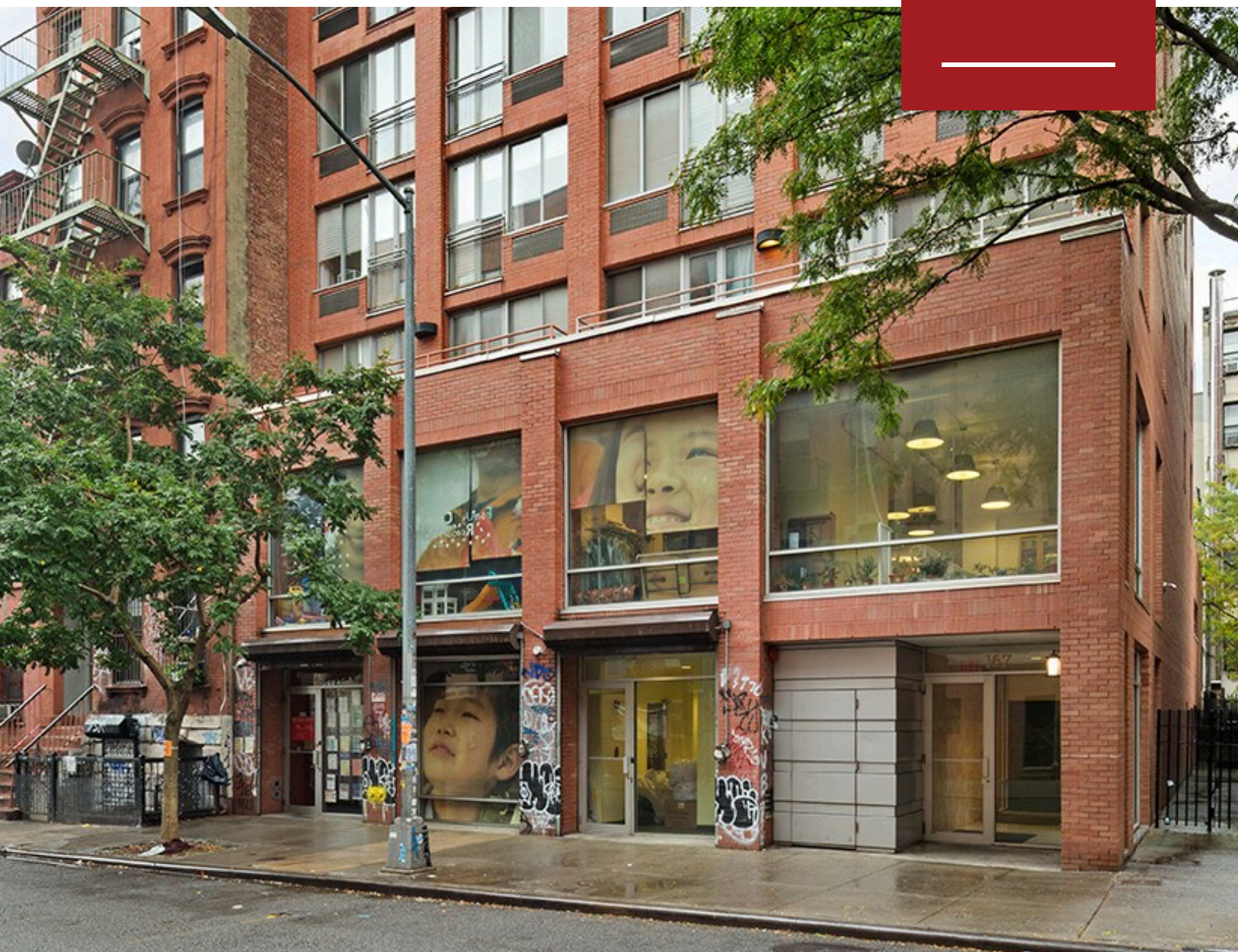


165 ELDRIDGE STREET | 2<sup>ND</sup> FLOOR  
6221 RSF



## CONTACT:

**Amy Price**

903.253.4278

[Amy.Price@redwoodnyc.com](mailto:Amy.Price@redwoodnyc.com)

**Eli Someck**

917.335.4948

[Eli.Someck@redwoodnyc.com](mailto:Eli.Someck@redwoodnyc.com)

## PROPERTY FEATURES

- 10'8" Ceilings
- 2 Bathrooms
- ADA compliant
- Large floor to ceiling windows
- Aggressively priced
- 24/7 Tenant controlled HVAC
- 600 amp 3 phase power
- Semi-private ground floor entrance w/ elevator
- Open to many uses including ceramic studio, workshops, fitness, education

165 ELDRIDGE STREET | 2<sup>ND</sup> FLOOR  
6,221 RSF



**CONTACT:**

**Amy Price**

903.253.4278

[Amy.Price@redwoodnyc.com](mailto:Amy.Price@redwoodnyc.com)

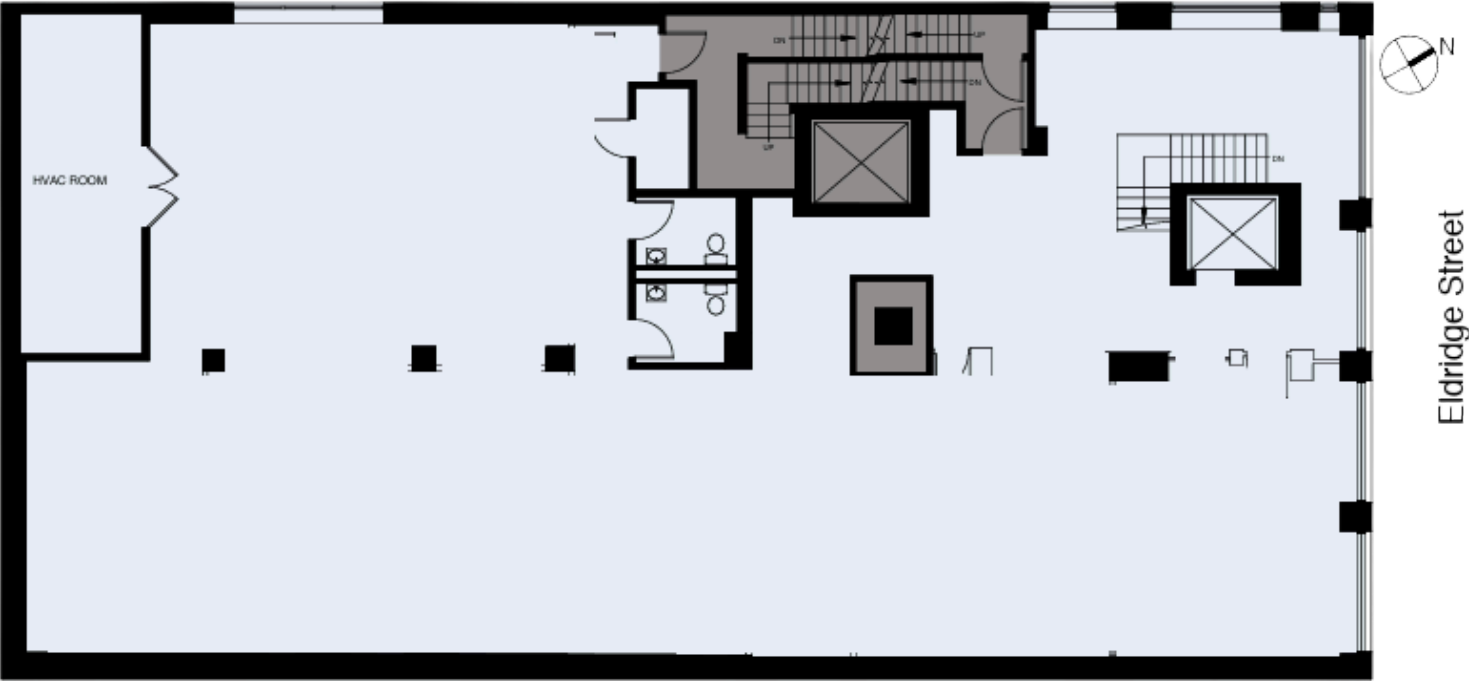
**Eli Someck**

917.335.4948

[Eli.Someck@redwoodnyc.com](mailto:Eli.Someck@redwoodnyc.com)

165 ELDRIDGE STREET | 2<sup>ND</sup> FLOOR

6,221 RSF



**CONTACT:**

**Amy Price**  
903.253.4278  
Amy.Price@redwoodnyc.com

**Eli Someck**  
917.335.4948  
Eli.Someck@redwoodnyc.com