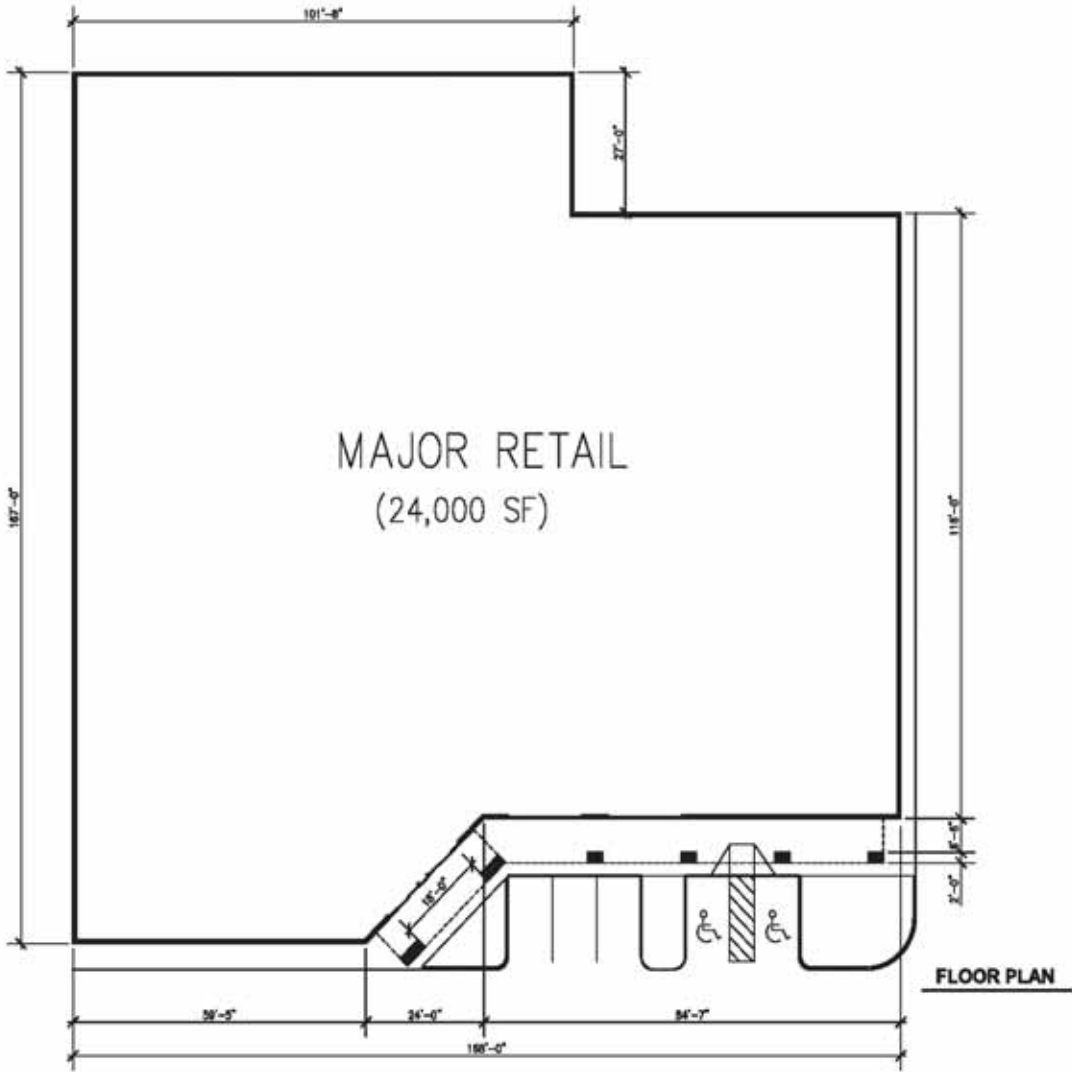




Grant Line Station Shopping Center

1900-1980 W. Grant Line Road
Tracy, CA 95376



For Additional information, contact Exclusive Agent:

408.331.2308
Mark@BiaginiProperties.com
Vice President

Mark Biagini DRE#00847403

Biagini Properties, Inc.
333 W. El Camino Real, Suite 240
Sunnyvale, CA 94087
Rev. April 23, 2026
www.biaginiproperties.com



The information contained herein has been given to us by the owner of the property or other sources we deem reliable. We have no reason to doubt its accuracy, but we do not guarantee it. All information should be verified prior to purchase or lease.

For Additional information, contact Exclusive Agent:

Mark Biagini DRE#00847403

Vice President

Mark@BiaginiProperties.com

408.331.2308

GRANT LINE STATION
1900-1980 W. GRANT LINE ROAD
TRACY, CALIFORNIA



NORTH ELEVATION



WEST ELEVATION

PRELIMINARY ELEVATIONS, SUBJECT TO CHANGE

Rev. 12/23/2024

All dimensions are approximate only. The information contained herein has been given to us by the owner of the property or other sources we deem reliable. We have no reason to doubt its accuracy, but we do not guarantee it. All information should be verified prior to purchase or lease.



333 W. El Camino Real, Suite 240
Sunnyvale, CA 94087-1969
Phone: (408) 331-2300
Fax: (408) 331-2301
© 2024 Biagini Properties, Inc. All rights reserved.



The information contained herein has been given to us by the owner of the property or other sources we deem reliable. We have no reason to doubt its accuracy, but we do not guarantee it. All information should be verified prior to purchase or lease.

For Additional information, contact Exclusive Agent:

Mark Biagini DRE#00847403

Vice President

Mark@BiaginiProperties.com

408.331.2308

GRANT LINE STATION
1900-1980 W. GRANT LINE ROAD
TRACY, CALIFORNIA



PRELIMINARY ELEVATIONS, SUBJECT TO CHANGE

Rev. 12/23/2024

All dimensions are approximate only. The information contained herein has been given to us by the owner of the property or other sources we deem reliable. We have no reason to doubt its accuracy, but we do not guarantee it. All information should be verified prior to purchase or lease.



333 W. El Camino Real, Suite 240
Sunnyvale, CA 94087-1969
Phone: (408) 331-2300
Fax: (408) 331-2301

© 2024 Biagini Properties, Inc. All rights reserved.



The information contained herein has been given to us by the owner of the property or other sources we deem reliable. We have no reason to doubt its accuracy, but we do not guarantee it. All information should be verified prior to purchase or lease.

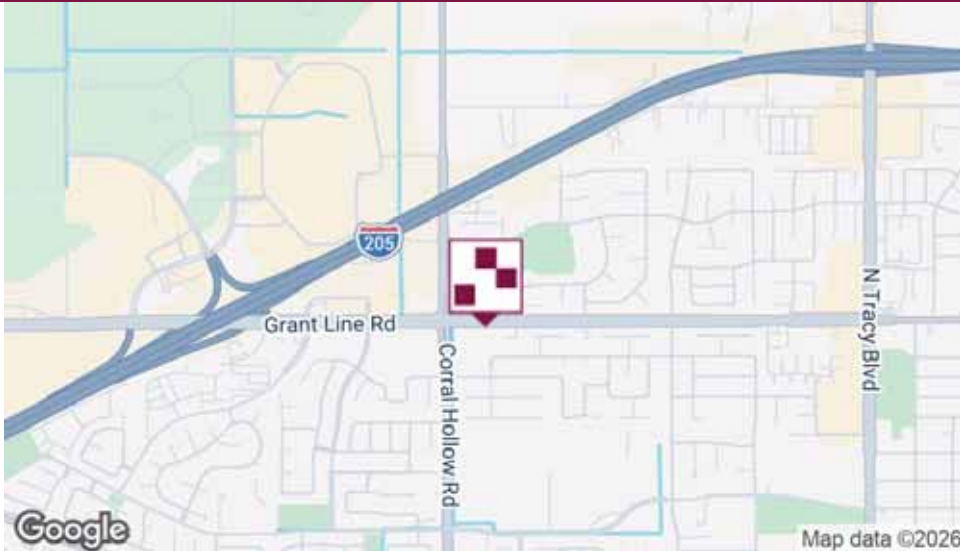
For Additional information, contact Exclusive Agent:

Mark Biagini DRE#00847403

Vice President

Mark@BiaginiProperties.com

408.331.2308



Property Description

Southeast corner of one of Tracy's busiest intersections. Grant Line Road connects with I-205. Heavy north/south traffic generated along Corral Hollow Road which connects residential area of Tracy with West Valley Mall.

Offering Summary

Lease Rate:	Negotiable
Estimated NNN Charges	Contact Agent
Number Of Units:	13
Available SF:	24,000 SF
Lot Size:	3.27 Acres

Property Highlights

- Great Location & Great Visibility
- Signalized Intersection & High Traffic Counts
- **New Energy Efficient LED Parking Lot/Exterior Lighting**
- Lots of Parking & Low NNN Charges
- Monument Signage
- Separately Metered Utilities
- Separate HVAC Units & Separate ADA Restrooms
- Fire Sprinklered Building
-
- **Co-Tenants:** Deccan Morsels Restaurant, Karma Creamery, VibrantCare, Arch Dental, Amazing Nail Salon, Tax Path Financial Perfect Cutz, EuroStar Cafe, Genius Kids, Adam Aqua Pure Water, The Bar Method Personal Fitness
- **Parking:** Over 8.7/1,000 (268 stalls) for Phase I and 4.5/1,000 upon build-out



The information contained herein has been given to us by the owner of the property or other sources we deem reliable. We have no reason to doubt its accuracy, but we do not guarantee it. All information should be verified prior to purchase or lease.

For Additional information, contact Exclusive Agent:

Mark Biagini DRE#00847403

Vice President

Mark@BiaginiProperties.com

408.331.2308



Lease Information

Lease Type:	NNN	Lease Term:	Negotiable
Total Space:	24,000 SF	Lease Rate:	Negotiable

Available Spaces

Suite	Tenant	Size (SF)	Lease Type	Lease Rate	Description
■ 2nd Anchor - to be built	Available	24,000 SF	NNN	Negotiable	2nd Anchor (To Be Built): 24,000 Square Feet Land: 4.78 Acres Buildings, Phase I: 35,910 Square Feet Future Phase II: 24,000 Square Feet Call Mark Biagini for rent quote.



The information contained herein has been given to us by the owner of the property or other sources we deem reliable. We have no reason to doubt its accuracy, but we do not guarantee it. All information should be verified prior to purchase or lease.

For Additional information, contact Exclusive Agent:

Mark Biagini DRE#00847403

Vice President

Mark@BiaginiProperties.com

408.331.2308

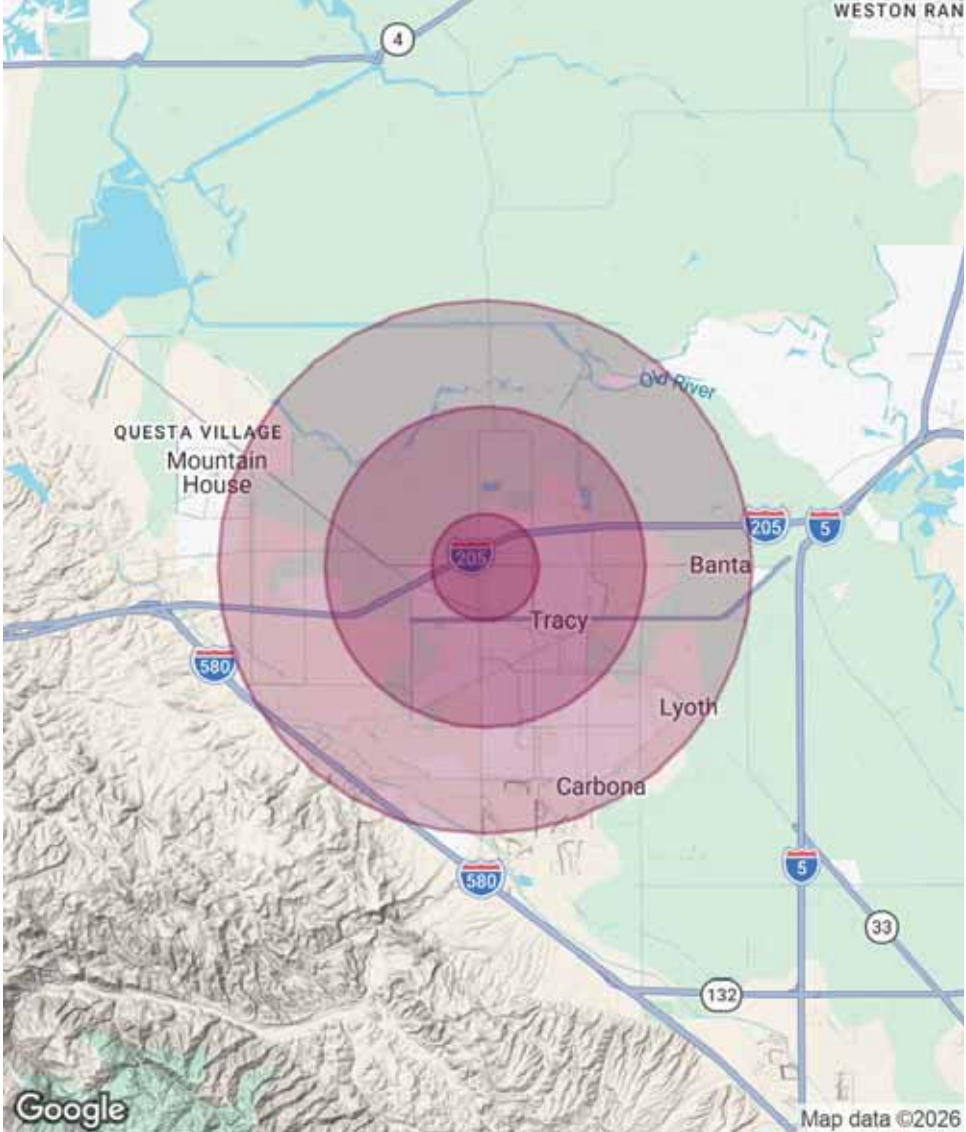
Population	1 Mile	3 Miles	5 Miles
Total Population	17,217	74,913	100,659
Average Age	33.5	34.7	35.0
Average Age (Male)	32.5	34.0	33.9
Average Age (Female)	34.9	35.3	35.8

Households & Income	1 Mile	3 Miles	5 Miles
Total Households	4,974	23,004	30,410
# of Persons per HH	3.5	3.3	3.3
Average HH Income	\$102,810	\$103,554	\$111,776
Average House Value	\$449,291	\$449,966	\$487,432

* Demographic data derived from 2020 ACS - US Census

Traffic Counts 24 Hour ADT 2017

W. Grant Line at Corral Hollow East	31,344
W. Grant Line at Corral Hollow West	24,022
Corral Hollow Road at Alegre Drive	33,035
I-205 at Corral Hollow Road.	107,000



The information contained herein has been given to us by the owner of the property or other sources we deem reliable. We have no reason to doubt its accuracy, but we do not guarantee it. All information should be verified prior to purchase or lease.

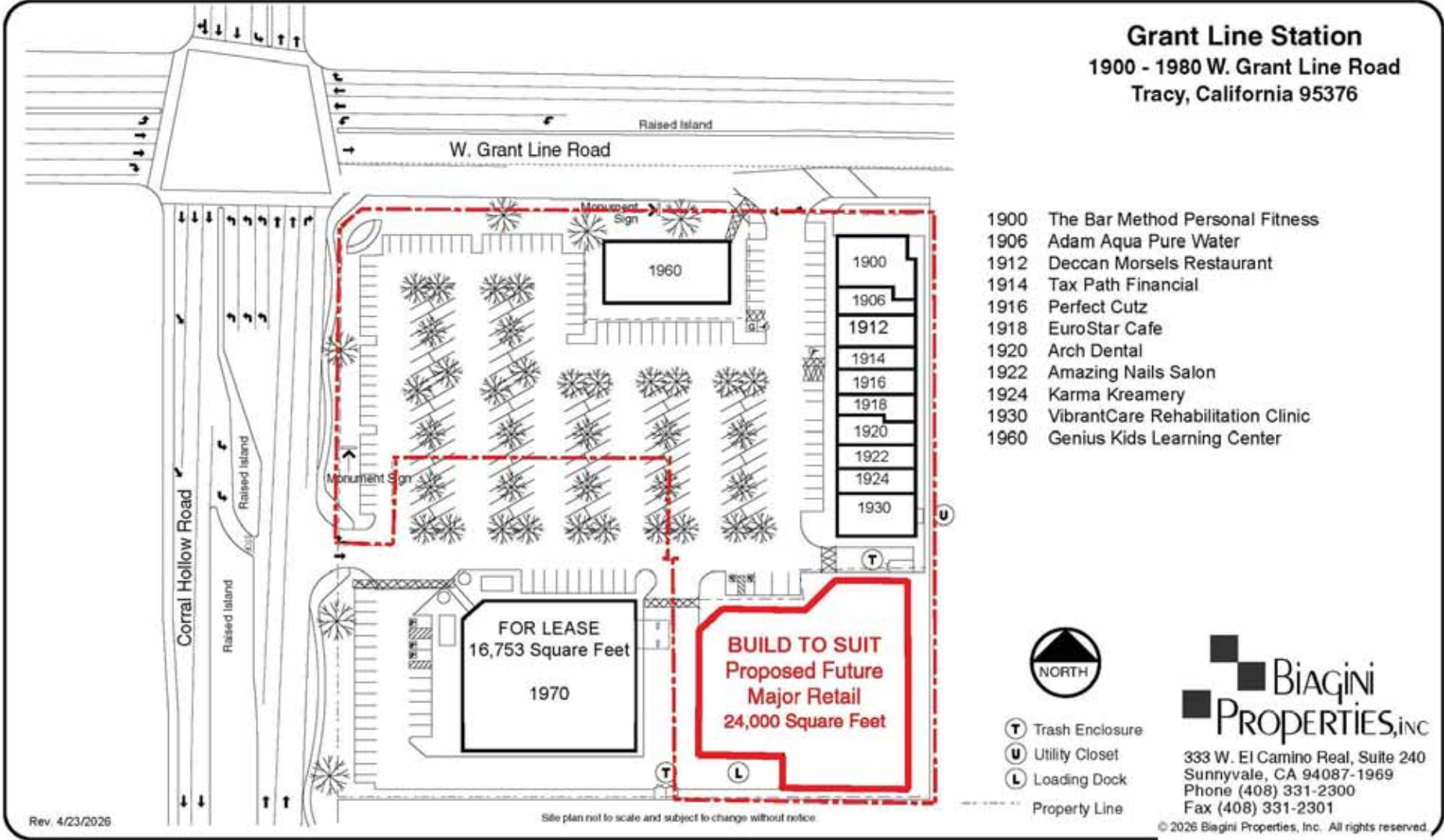
For Additional information, contact Exclusive Agent:

Mark Biagini DRE#00847403

Vice President

Mark@BiaginiProperties.com

408.331.2308



The information contained herein has been given to us by the owner of the property or other sources we deem reliable. We have no reason to doubt its accuracy, but we do not guarantee it. All information should be verified prior to purchase or lease.

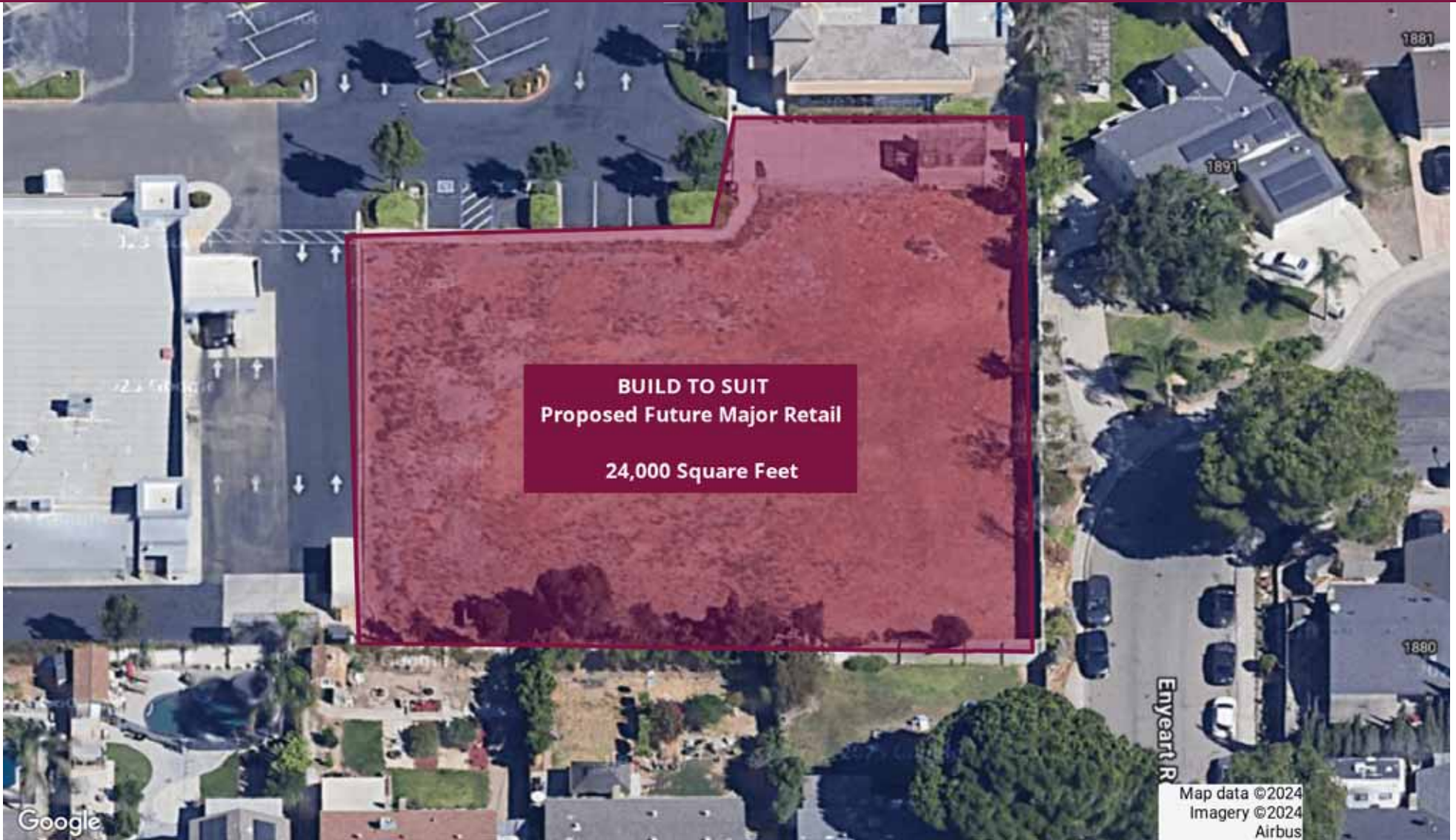
For Additional information, contact Exclusive Agent:

Mark Biagini DRE#00847403

Vice President

Mark@BiaginiProperties.com

408.331.2308



The information contained herein has been given to us by the owner of the property or other sources we deem reliable. We have no reason to doubt its accuracy, but we do not guarantee it. All information should be verified prior to purchase or lease.

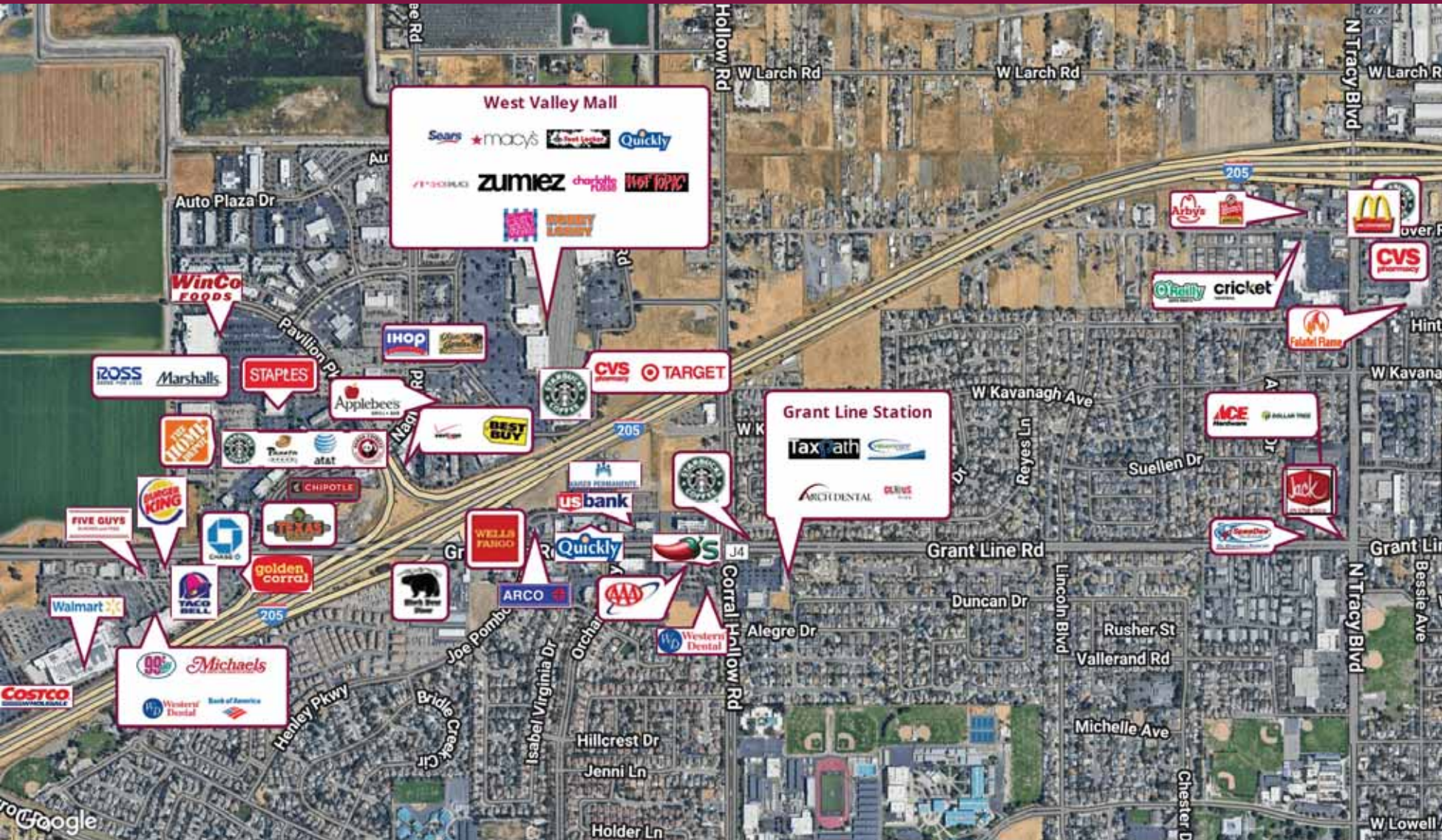
For Additional information, contact Exclusive Agent:

Mark Biagini DRE#00847403

Vice President

Mark@BiaginiProperties.com

408.331.2308



The information contained herein has been given to us by the owner of the property or other sources we deem reliable. We have no reason to doubt its accuracy, but we do not guarantee it. All information should be verified prior to purchase or lease.

For Additional information, contact Exclusive Agent:

Mark Biagini DRE#00847403

Vice President

Mark@BiaginiProperties.com

408.331.2308



The information contained herein has been given to us by the owner of the property or other sources we deem reliable. We have no reason to doubt its accuracy, but we do not guarantee it. All information should be verified prior to purchase or lease.

For Additional information, contact Exclusive Agent:

Mark Biagini DRE#00847403

Vice President

Mark@BiaginiProperties.com

408.331.2308