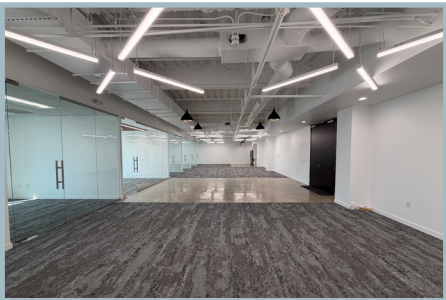


# STADIUM CENTRE

2099 S STATE COLLEGE BLVD.  
Suite 255 - 3,582 RSF  
Spec Suite - Available Now



JAY NUGENT  
Executive Managing Director  
CA RE Lic. #01248267  
t 949-608-2035  
jay.nugent@nmrk.com

ANDREW ROBBEN  
Senior Managing Director  
CA RE Lic. #01372891  
t 949-608-2073  
andrew.robben@nmrk.com

RICHARD SUNG  
Senior Managing Director  
CA RE Lic. #01953211  
t 949-608-2178  
richard.sung@nmrk.com

RAYLEE OVERTON  
Transaction Manager  
CA RE Lic. #02082860  
t 949-608-2012  
raylee.overton@nmrk.com

18401 Von Karman Avenue, Suite 150, Irvine, CA 92612 | Corporate License #01355491

The distributor of this communication is performing acts for which a real estate license is required. The information contained herein has been obtained from sources deemed reliable but has not been verified and no guarantee, warranty or representation, either express or implied, is made with respect to such information. Terms of sale or lease and availability are subject to change or withdrawal without notice.