

# Compton

---

## Clerkenwell

159 St John Street  
EC1V 4QJ

---

Unique triplex office suite in one of  
Farringdon's most historic converted  
warehouse buildings available from  
May 2025

---

## For Rent

5,617 to 7,841 ft<sup>2</sup>

020 7101 2020  
compton.london



# Compton

---

## Clerkenwell

159 St John Street  
EC1V 4QJ

---

Unique triplex office suite in one of Farringdon's most historic converted warehouse buildings available from May 2025

---

## For Rent

5,617 to 7,841 ft<sup>2</sup>

---



## Location

Nestled in the vibrant heart of Clerkenwell, 159 St John Street offers a prime location that perfectly blends historical charm with modern convenience. Surrounded by an eclectic mix of trendy cafés, gourmet restaurants, and boutique shops, this area is a hub of cultural activity and creativity.

Clerkenwell & Farringdon is well-connected, with excellent transport links including the London Underground, National Rail services, and the Elizabeth Line, making it easy to navigate The City, West End and beyond. The nearby Smithfield Market adds to the neighborhood's character, while iconic landmarks such as St John's Gate and Clerkenwell Green are just a short stroll away.

# Compton

---

**Clerkenwell**  
159 St John Street  
EC1V 4QJ

---

Unique triplex office suite in one of Farringdon's most historic converted warehouse buildings available from May 2025

---

**For Rent**  
5,617 to 7,841 ft<sup>2</sup>

---



# Compton

---

**Clerkenwell**  
159 St John Street  
EC1V 4QJ

---

Unique triplex office suite in one of Farringdon's most historic converted warehouse buildings available from May 2025

---

**For Rent**  
5,617 to 7,841 ft<sup>2</sup>

---



# Compton

---

**Clerkenwell**  
159 St John Street  
EC1V 4QJ

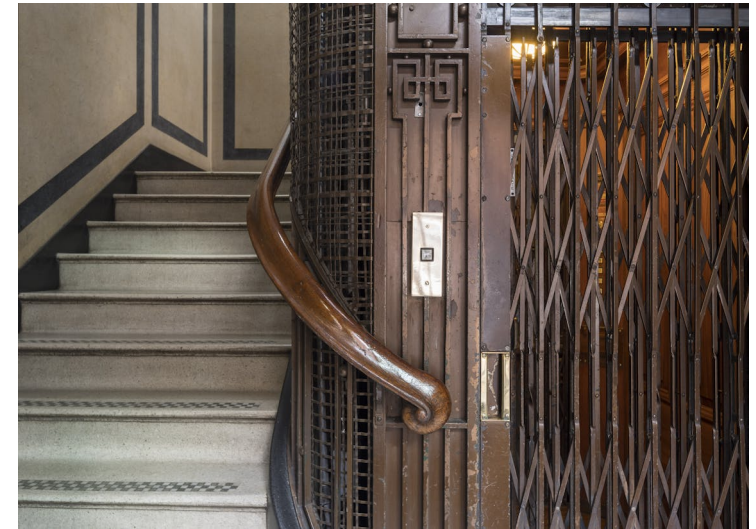
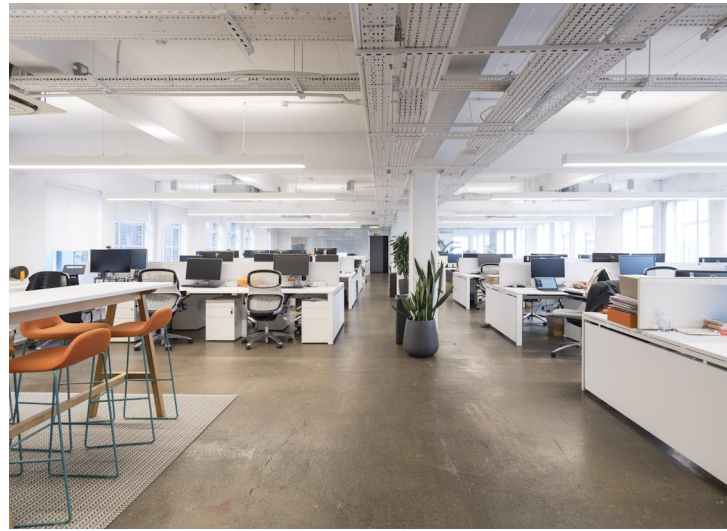
---

Unique triplex office suite in one of Farringdon's most historic converted warehouse buildings available from May 2025

---

**For Rent**  
5,617 to 7,841 ft<sup>2</sup>

---

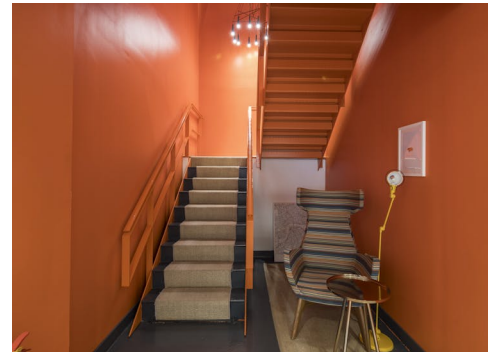
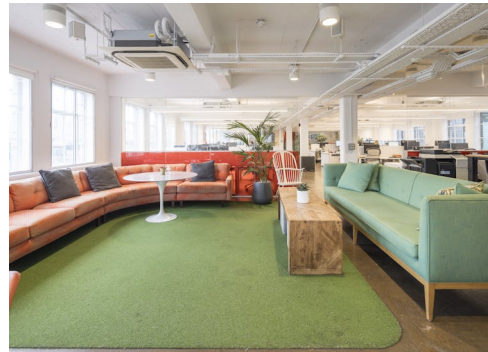
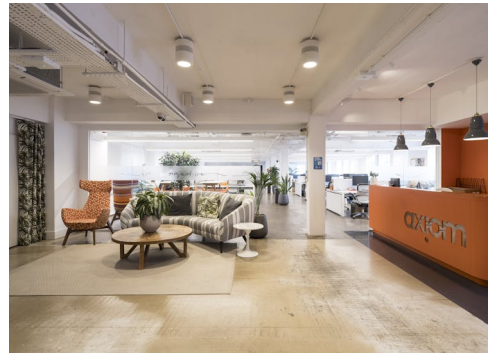


# Compton

**Clerkenwell**  
159 St John Street  
EC1V 4QJ

Unique triplex office suite in one of  
Farringdon's most historic converted  
warehouse buildings available from  
May 2025

**For Rent**  
5,617 to 7,841 ft<sup>2</sup>



# Compton

---

## Clerkenwell

159 St John Street  
EC1V 4QJ

---

Unique triplex office suite in one of Farringdon's most historic converted warehouse buildings available from May 2025

---

## For Rent

5,617 to 7,841 ft<sup>2</sup>

---

## Amenities

- Triplex suite across 4th, 5th & 6th floors
- Characterful features throughout
- Restored Hammond and Champness passenger lift plus 2 new Mitsubishi lifts
- Large good's lift
- Excellent natural daylight
- Accommodation for 50 - 80 workstations
- Multiple existing meeting rooms
- Air conditioning
- Large kitchenette
- Ample breakout areas
- Generous floor to ceiling height

---

## Description

Discover the unique charm and historical significance of 159 St John Street, a captivating property located in the heart of Farringdon. This distinguished building is not only a testament to the architectural elegance of its time but also a notable landmark in the evolution of engineering and technology in London.

Originally home to the renowned engineering firm Hammond and Champness, 159 St John Street played a pivotal role in the advancement of lift technology during the late 19th and early 20th centuries. The innovative lift installed within this property remains a highlight, showcasing the engineering prowess of the era and adding to the building's character.

Architecturally, the property boasts classic features that reflect its rich history. With its striking façade and intricate detailing, it stands as a proud representation of the craftsmanship of its time. Inside, the layout offers a blend of historic charm and modern functionality, making it an ideal office space.

This rarely available triplex unit, spread across 4th, 5th & 6th floors, provides best in class space with a uniqueness like no other.

# Compton

---

## Clerkenwell

159 St John Street  
EC1V 4QJ

---

Unique triplex office suite in one of Farringdon's most historic converted warehouse buildings available from May 2025

---

## For Rent

5,617 to 7,841 ft<sup>2</sup>

---

## Content

View on Website



---

## Viewings

Strictly via sole agents

## Terms

New full repairing & insuring lease available for a term by arrangement direct from the Landlord

## VAT

The building is elected for VAT

## Local Authority

The London Borough of Islington

# Compton

---

## Clerkenwell

159 St John Street  
EC1V 4QJ

---

Unique triplex office suite in one of Farringdon's most historic converted warehouse buildings available from May 2025

---

## For Rent

5,617 to 7,841 ft<sup>2</sup>

---

## Floor Areas & Outgoings

---

The accommodation comprises the following areas:

Name	sq ft	Rent (sq ft)	Rates Payable (sq ft)	Service Charge (sq ft)	Total /sq ft	Total month	Total year	Availability
5th - & 6th	2,224	£67.50	£20.02	£10	£97.52	£18,073.71	£216,884.48	Available
4th	5,617	£67.50	£20.02	£10	£97.52	£45,647.49	£547,769.84	Available
Total	7,841	£67.50	£20.02	£10	£97.52	£63,721.20	£764,654.32	

# Compton

---

## Contact Us

All appointments to view must be arranged via sole agents, Compton, through —

Josh Perlmutter  
[jp@compton.london](mailto:jp@compton.london)  
07814 699 096

Shaun Simons  
[ss@compton.london](mailto:ss@compton.london)  
07788 423131

