



For Sublease

**191 Dalton Ave, Kingston, On
Units 1, 2B, 2C**

©2024 Rockwell Commercial Real Estate Brokerage Corp. Independently owned and operated. Also operating as Rockwell Commercial Real Estate, Brokerage. All rights are reserved. No representation or warranty, express or implied, is made as to the accuracy or completeness of the information contained herein, and same is submitted subject to errors, omissions, change of price, rental or other conditions, withdrawal without notice, and/or to any special listing conditions imposed by the property owner(s). No representation or warranty is made with respect to the condition any real property or properties.

V260327

Peter Kostogiannis
Broker of Record/President
1 613 542 2724 x 24
peter.kostogiannis@rockwellcre.com

Scott Botting B.Com
Broker
1 613 542 2724 x 33
scott.botting@rockwellcre.com



**Rockwell Commercial
Real Estate, Brokerage**
78 Brock St Kingston, ON K7L 1R9
www.rockwellcre.com

Property Details

Area:	± 18,395 sf + mezzanine storage (includes ± 15,000 of warehouse and shop space plus retail and office areas)
Semi-Gross Rent:	\$10.00 psf - applied to ground floor area (16,866 sf) only
Doors:	6 drive-in doors (15' x 15')
Ceilings:	± 20 ft'
Utilities:	Paid separately by sub-tenant
Power:	To be determined
Possession:	Immediate
Sublease Expiry:	May 30, 2027
Sub-landlord:	1490288 Ontario Inc.
Parking:	To be determined
Signage	Roof signage (with Highway 401 exposure), building and pylon signage available.

Highlights

- Strategically located offering excellent access to and excellent visibility along highway 401.
- Convenient access to key transportation networks, including proximity to major highways, USA crossings and Picton Terminals deep water port facilitating efficient logistics and distribution.
- End-to-end drive through capability





📍 Location

Excellent location backing onto Highway 401. Located between Division Street and Sir John A. MacDonal Boulevard only ± 700 metres to Highway 401 exits 615 & 617 and provides easy access to downtown.

The site benefits from an abundance of amenities in the immediate area including gas stations, grocery stores, fast-food options, LCBO and Beer Store, Canadian Tire and more.

🎯 Zoning M3 Heavy Industrial Zone (By-Law 2022-62)

Principal uses:

- Automobile body shop
- Automobile repair shop
- Contractor's yard
- Equipment rental
- Heavy equipment or truck repair shop
- Heavy industrial uses
- Industrial repair shop
- Light industrial use
- Repair shop
- Towing compound
- Transportation depot
- Warehouse
- Wholesale establishment
- Workshop

Accessory Uses:

- Office space⁴
- Outdoor storage⁴
- Retail store (max 25%)²

² Is permitted only as an accessory use to a principal use on the lot and is limited to a maximum gross floor area of 25% of the gross floor area of the principal use.

⁴ Is permitted use to a principal use on the lot

DISTANCE BY VEHICLE

1hr 54min

OTTAWA

3hr

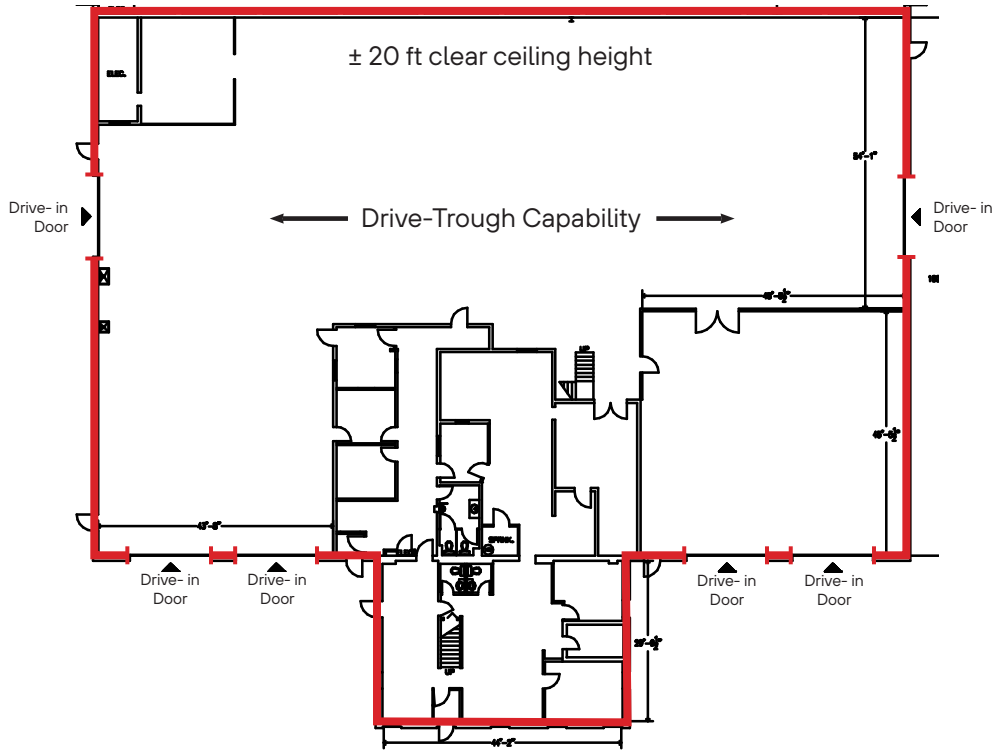
MONTREAL

2hr 31min

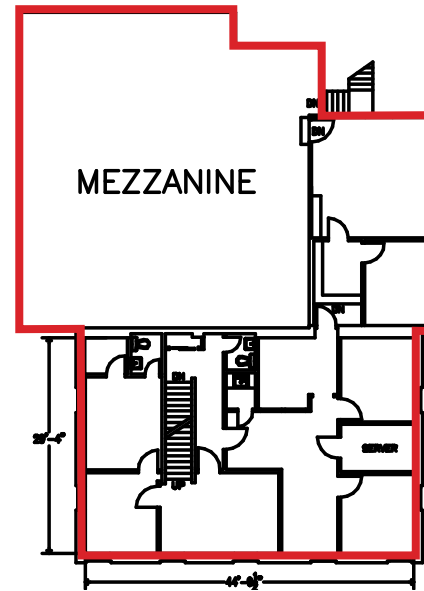
TORONTO

Floor Plan

Main Floor



Second Floor



Areas Included	
Main Floor Office	± 3,706 sf
Second Floor Office	± 1,493 sf
Mezzanine (Excluded from Rentable Area)	± 2,214 sf
Warehouse	± 13,160 sf
Total Rentable Area	± 18,359 sf

* Some existing interior partitions may offer from what is shown above


For Sublease

191 Dalton Ave, Kingston, On Units 1, 2B, 2C

©2024 Rockwell Commercial Real Estate Brokerage Corp. Independently owned and operated. Also operating as Rockwell Commercial Real Estate, Brokerage. All rights are reserved. No representation or warranty, express or implied, is made as to the accuracy or completeness of the information contained herein, and same is submitted subject to errors, omissions, change of price, rental or other conditions, withdrawal without notice, and/or to any special listing conditions imposed by the property owner(s). No representation or warranty is made with respect to the condition any real property or properties. V260327

Peter Kostogiannis
Broker of Record/President
1 613 542 2724 x 24
peter.kostogiannis@rockwellcre.com

Scott Botting B.Com
Broker
1 613 542 2724 x 33
scott.botting@rockwellcre.com

 **Rockwell Commercial
Real Estate, Brokerage**
78 Brock St Kingston, ON K7L 1R9
www.rockwellcre.com