

PRIME MARKET ST. LOCATION

**AVAILABLE FOR SALE
OR LEASE**

**2055-2057 MARKET
STREET**



OAK IMPACT
GROUP

BUILDING OVERVIEW

2055-2057 Market Street



AVAILABLE FOR SALE OR LEASE

This modern two-unit building was built in 1986, and contains 3850 sq ft per tax records and is centrally located within the city at Market/Church & 14th. With the gorgeous SF weather it brightens the entire upper unit with skylights & windows throughout; well designed floor plans houses open reception area, kitchen in the rear, bathroom and four offices. Lower Unit, where the main room opens and spans the width of the building, an enclosed treatment room and little kitchenette. The lot also extends between Market and 14th Street with gated two-car parking pad off 14th Street.



Erik Murray Managing Partner
erik@oifunds.com (510) 550-5102

AVAILABLE FOR SALE OR LEASE

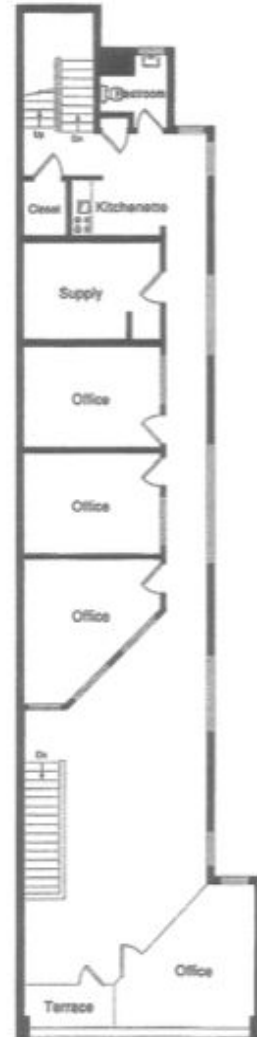
2055-2057 MARKET STREET

HIGHLIGHTS

- 3,850 sq. ft. building
- Prime San Francisco location adjacent to Safeway and Whole Foods
- Two off-street dedicated parking spaces
- Ideal for retail, office, and creative uses
- A half block from Church St. MUNI



Lower Level



Upper Level

DEMOGRAPHICS & AREA OVERVIEW

2055-2057 MARKET STREET | CASTRO - SF



\$193,980

average median household income of residents



45%

of residents are between the ages of 23 - 44



77.2%

of residents have a bachelor's degree or higher



98/99

Walk score/transit score

HISTORIC CASTRO NEIGHBORHOOD AREA OVERVIEW

Among the many neighborhoods in San Francisco, The Castro is one of the most famous. You'll find it in Eureka Valley, overlooked by the Twin Peaks' Eureka Peak and sandwiched between the trendy Haight-Ashbury neighborhood (of Painted Ladies fame) and the multicultural Mission District.

While it traditionally is not the San Francisco tourist destination Fisherman's Wharf is, this area of San Francisco is increasingly finding a top spot on travelers' itineraries and boasts high foot traffic and an increase in annual visitors.

The neighborhood has a lot to offer — a great nightlife scene, Instagram-worthy murals, a vibrant LGBTQ community, and rich history.



OAK IMPACT
GROUP

AVAILABLE FOR SALE OR LEASE

2055-2057 MARKET STREET



SAFeway

Jamba Juice

WHOLE FOODS MARKET

2055-2057 Market Street

EVgo

MUNI

Erik Murray
Managing Partner
erik@oifunds.com
(510) 550-5102

