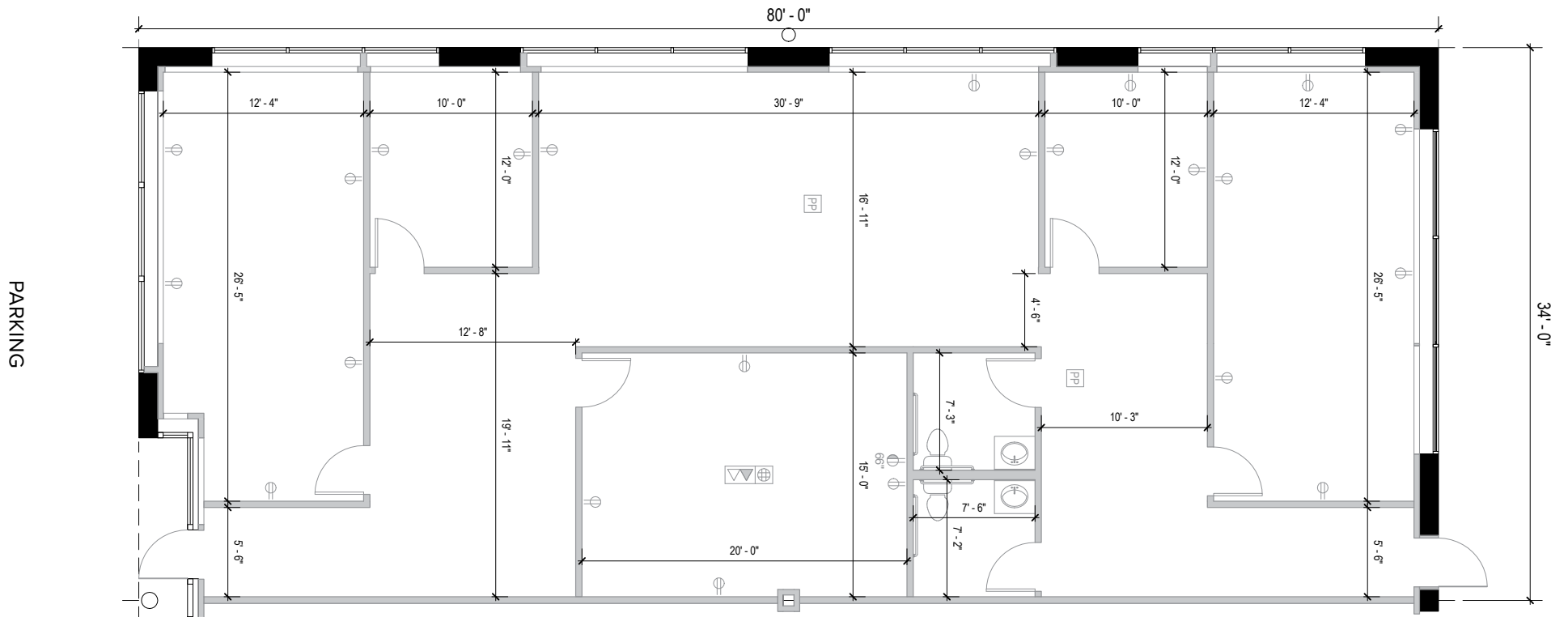


**The GATE**

6180 Guardian Gateway | Aberdeen Proving Ground, MD 21005  
Suite 100

**Total SF Available:**  
2,717 SF





St. John Properties offers modern, efficient single-story buildings designed to accommodate offices, electronics labs, conference facilities and any secure compartmentalized information facilities (SCIFs).



**Single-Story Office Buildings**

6150 Guardian Gateway	FUTURE
6160 Guardian Gateway	21,080 SF <b>LEED GOLD</b>
6170 Guardian Gateway	25,160 SF <b>LEED GOLD</b>
6180 Guardian Gateway	29,410 SF <b>LEED GOLD</b>
6245 Guardian Gateway	31,280 SF <b>LEED SILVER</b>

**Single-Story Office Specifications**

LEED	Core & shell
Suite Sizes	1,245 up to 31,280 SF
Ceiling Height	10 ft. clear minimum
Offices	Built to suit
Parking	5 spaces per 1,000 SF
Heat	Gas
Roof	EPDM rubber
Exterior	ATFP





**Scan with your mobile device to take a virtual tour, download floor plans and more!**

# Contact Us

For additional leasing information or to schedule a tour, contact:

**Michael Tait**  
Leasing Representative  
mtait@sjpi.com  
301.928.5108

**Matt Lenihan**  
Senior Vice President,  
Leasing  
mlenihan@sjpi.com  
410.404.5502

**Corporate Headquarters:**  
2560 Lord Baltimore Drive  
Baltimore, MD 21244

**410.788.0100 | SJPI.COM**



## About St. John Properties

St. John Properties, Inc. is a full-service commercial real estate firm headquartered in Baltimore, Maryland. The company has developed, constructed, and owns more than 22 million square feet of commercial real estate, including office, flex/R&D, warehouse, retail and residential space.

Connect with us **@stjohnprop**



*This information contained in this publication has been obtained from sources believed to be reliable. St. John Properties makes no guarantee, warranty or representation about this information. Any projections, opinions, assumptions or estimates used here are for example only and do not represent the current or future performance of the property. Interested parties should conduct an independent investigation to determine whether the property suits their needs. REV 10/22*