

**KOHL'S PLAZA**  
**880-898**  
**BLOSSOM HILL RD**  
SAN JOSE, CA



**RETAIL AVAILABLE:**  
**20,000 SF**



**FOR LEASE:**  
**±3,280 – 20,000 SF**

**PC** **PRIME COMMERCIAL**  
INCORPORATED

www.primecommercialinc.com  
408.879.4000 (OFFICE)

**DIXIE DIVINE**  
PRIME COMMERCIAL, INC.  
408.313.8900

ddivine@primecommercialinc.com  
CA LICENSE NO. 00926251 & 01481181

**MARK TSUKUDA**  
INDUSTRIAL PROPERTY ASSOCIATES  
408.656.5316

mark.tsukuda.ipa@gmail.com  
CA LICENSE NO. 420822

**STEVEN DWYER**  
INDUSTRIAL PROPERTY ASSOCIATES  
408.691.4973

iparealestate@comcast.com  
CA LICENSE NO. 00664151

**KOHL'S PLAZA**  
**880-898**  
**BLOSSOM HILL RD**  
 SAN JOSE, CA

**FOR LEASE:**  
**±3,280 – 20,000 SF**

- Best location in San Jose at the SW Corner of *Santa Teresa Blvd* and *Blossom Hill*
- Highly visible and busy shopping center. Co-tenants include: Kohl's, Petco, and In-N-Out.
- Strong demographics and high traffic counts
- Across from Westfield Shopping Center, anchored by Macy's, Nordstrom Rack and Target



<b>DEMOGRAPHICS</b>	<b>1 MILE</b>	<b>3 MILES</b>	<b>5 MILES</b>
Total Population	23,600	211,538	443,447
Household Income	\$164,077	\$185,764	\$185,819

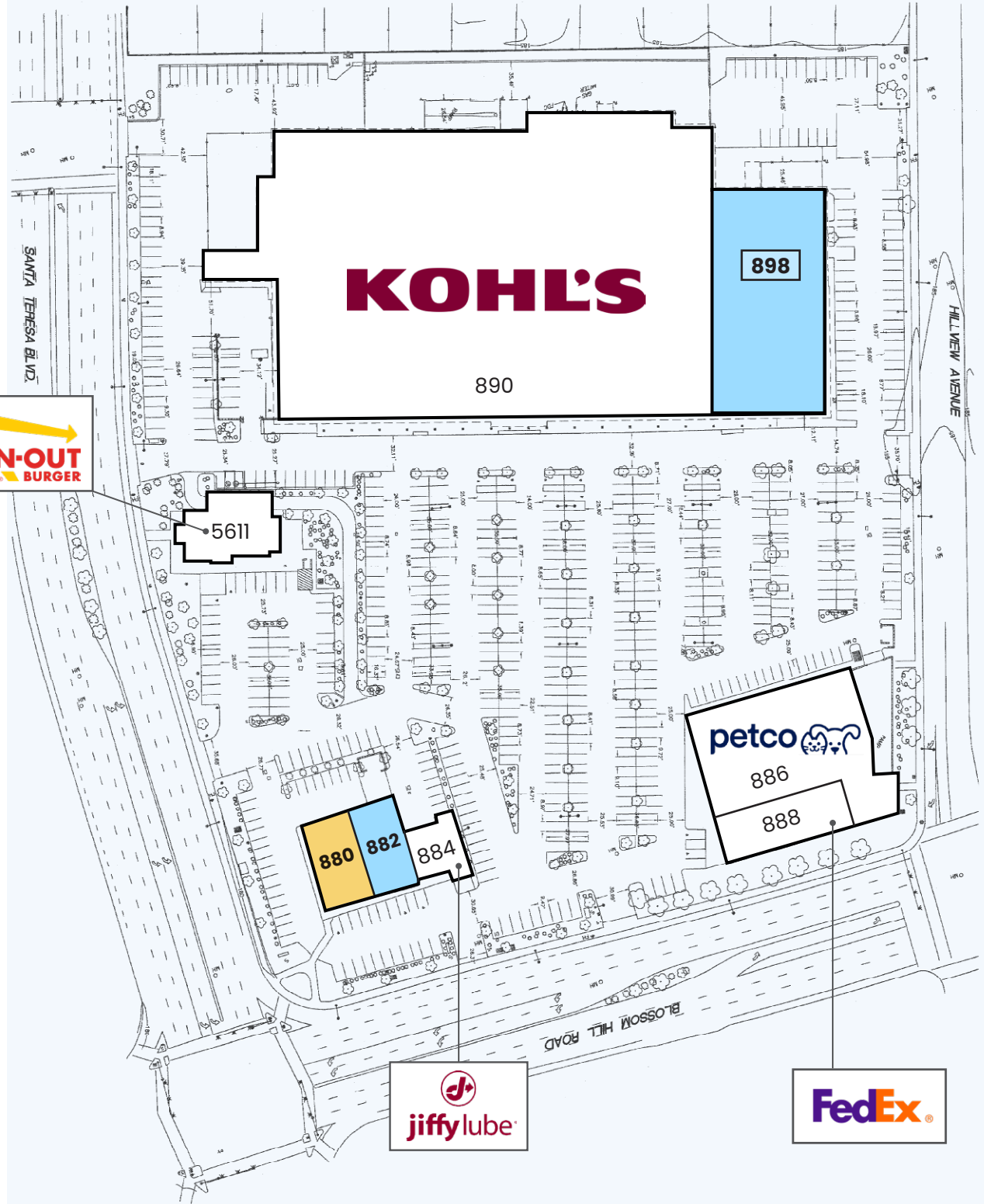
**HIGH TRAFFIC COUNTS**

Blossom Hill Rd.	32,000 ADT
Santa Teresa Blvd.	22,066 ADT

# KOHL'S PLAZA SITE PLAN

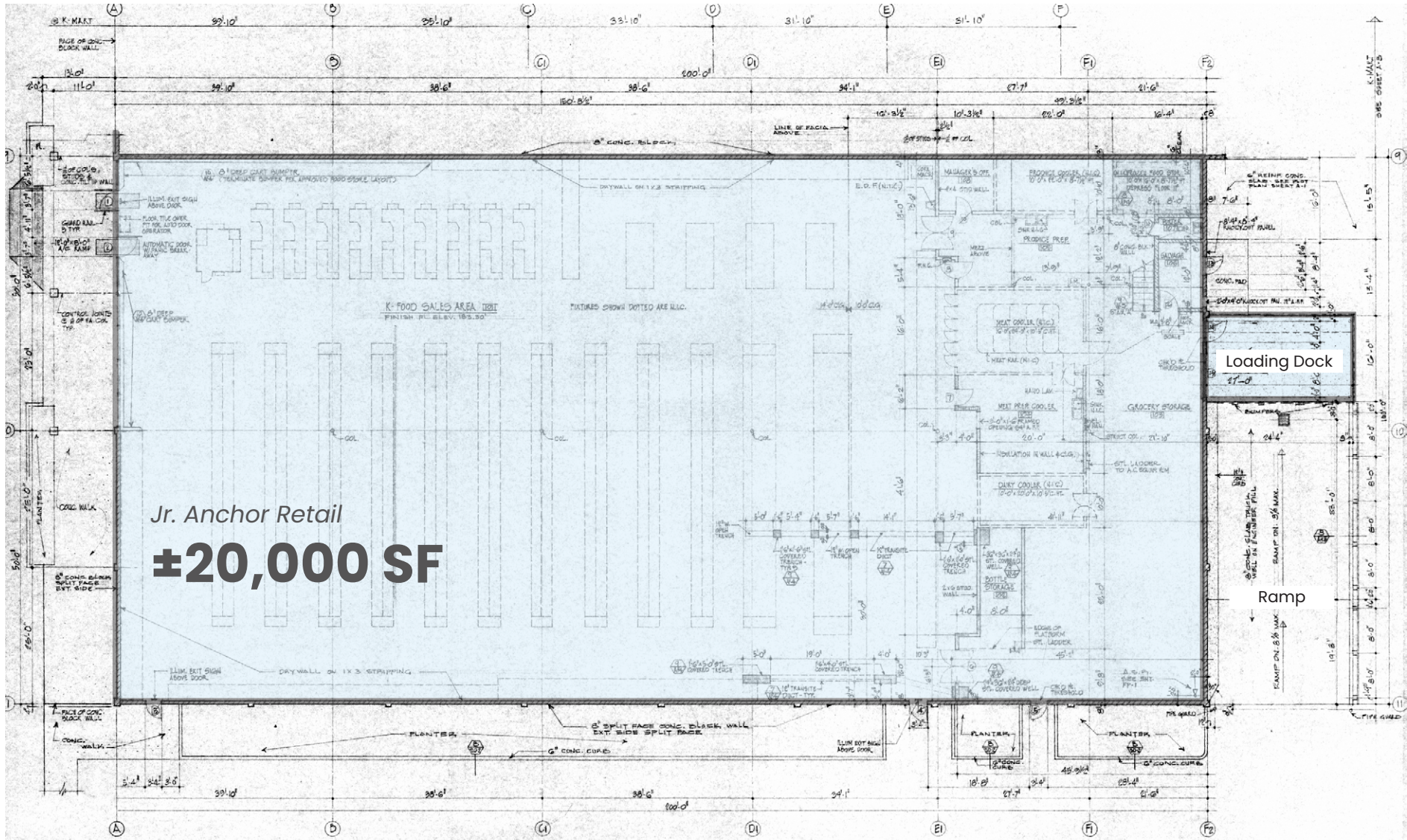
Available For Lease  
 Lease Pending

UNIT	TENANT
898	RETAIL AVAILABLE - 20,000 SF
890	Kohl's
888	Fedex ( <i>Coming Soon</i> )
886	Petco
884	Jiffy Lube
882	RETAIL AVAILABLE - 3,280 SF
880	RESTAURANT PENDING - 3,520 SF
5611	In-N-Out Burger



898 BLOSSOM HILL

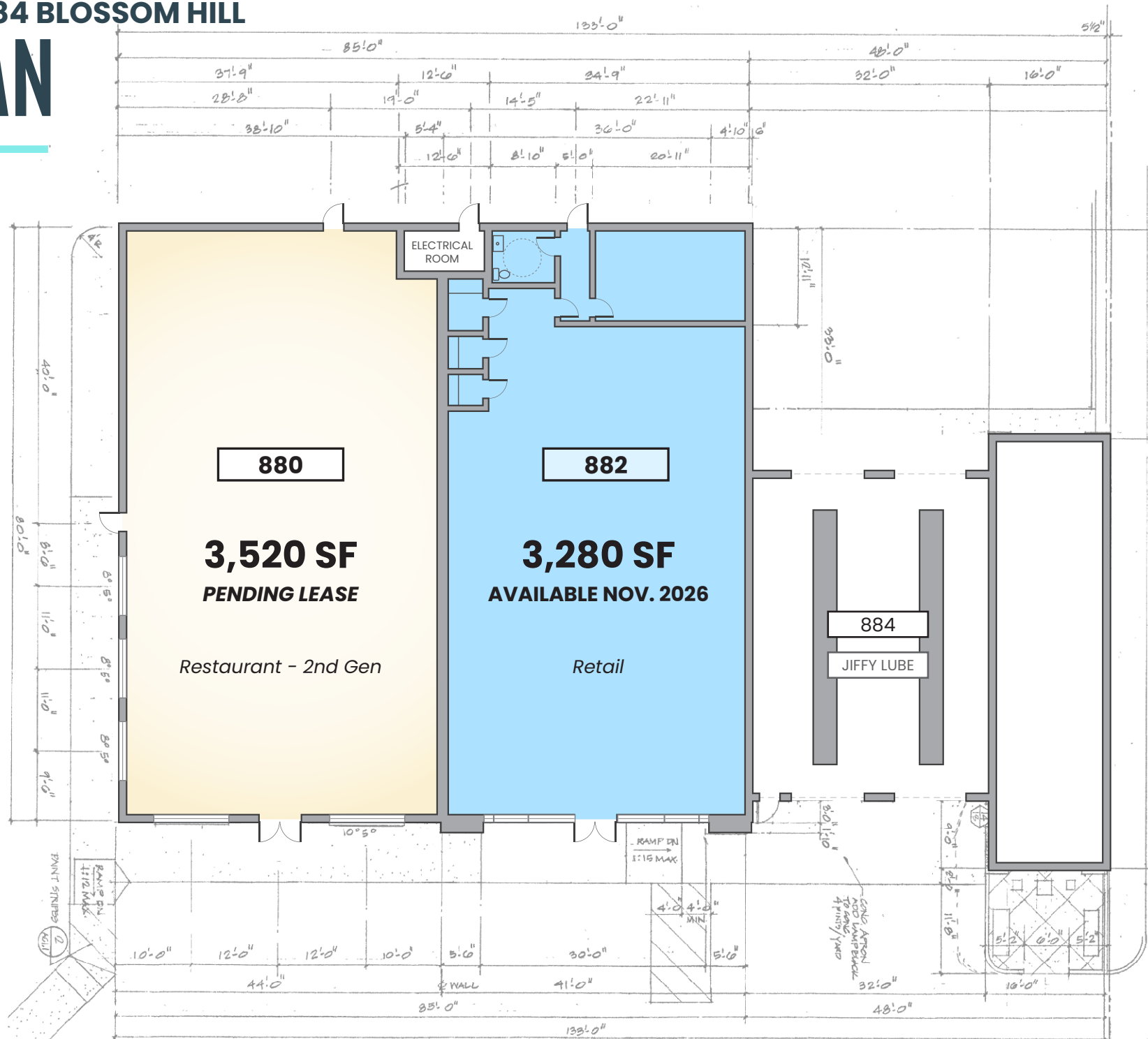
# FLOOR PLAN



Jr. Anchor Retail  
**±20,000 SF**

# 880-884 BLOSSOM HILL

# PLAN



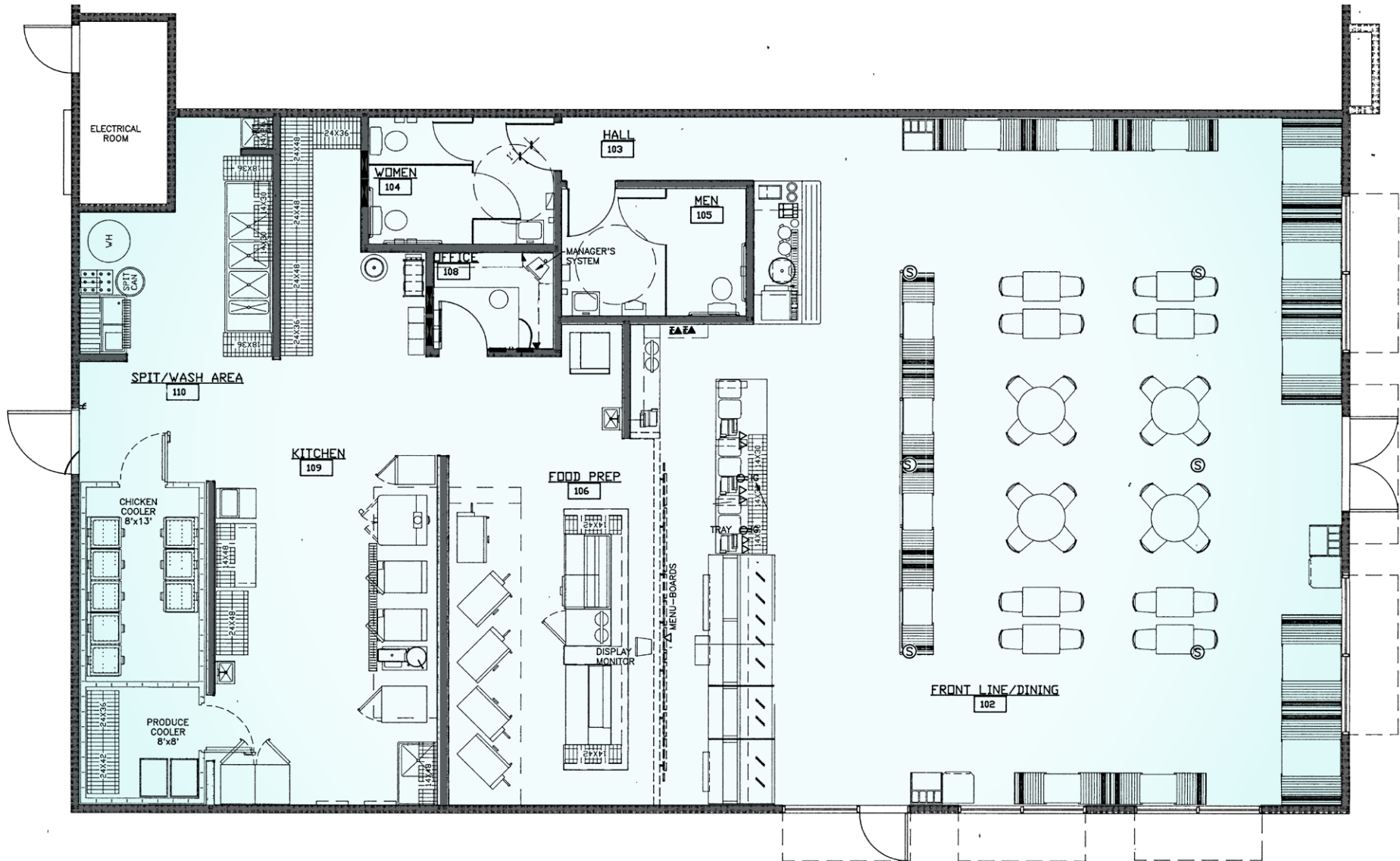
880 BLOSSOM HILL

# FLOOR PLAN

2nd Generation Restaurant

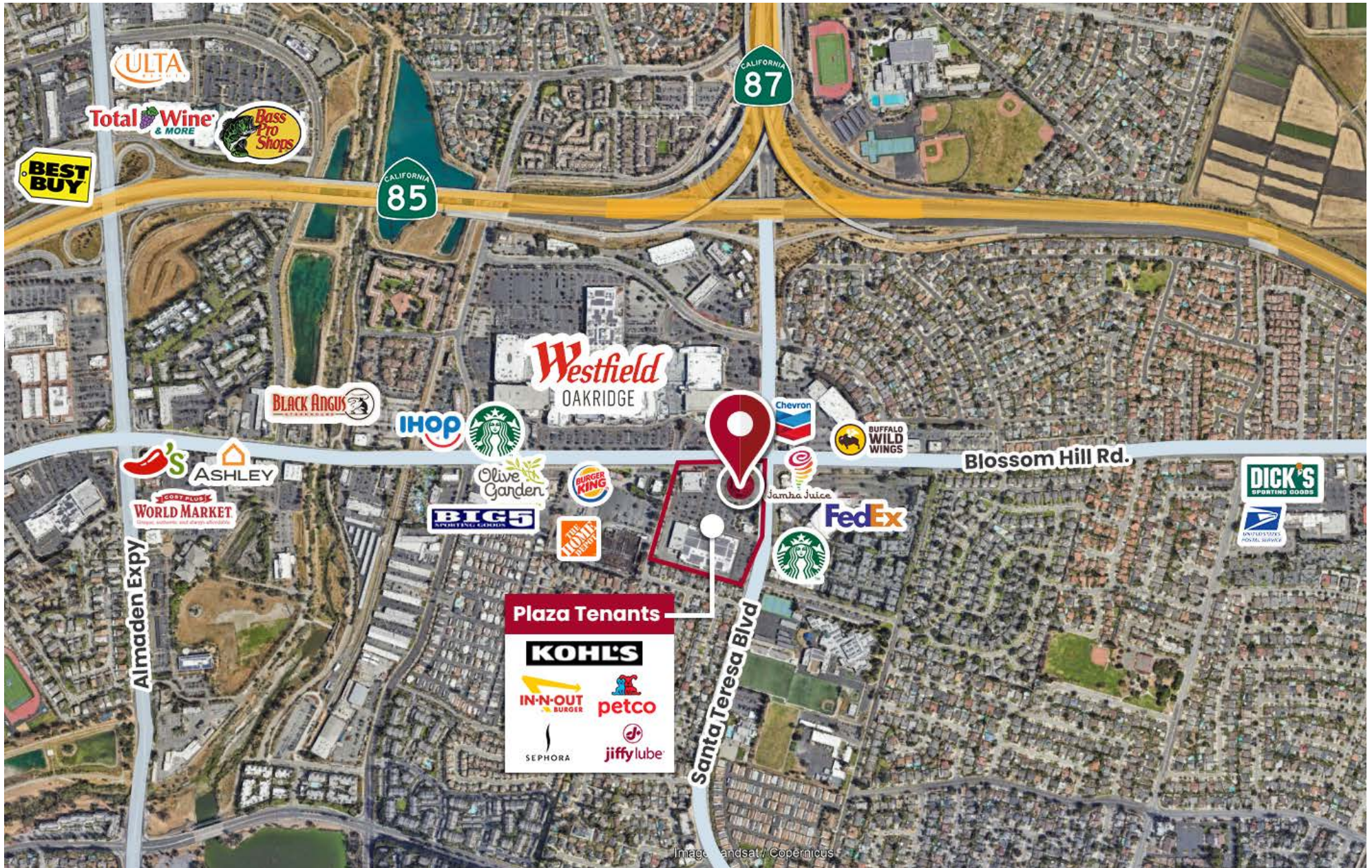
# ±3,520 SF

Lease Pending



## NEARBY RETAILERS

# AERIAL MAP



**KOHL'S PLAZA**  
**880-898**  
**BLOSSOM HILL RD**  
SAN JOSE, CA

**DIXIE DIVINE**

*PRIME COMMERCIAL, INC.*

[ddivine@primecommercialinc.com](mailto:ddivine@primecommercialinc.com)

CA LICENSE NO. 00926251 & 01481181

408.313.8900

**MARK TSUKUDA**

*INDUSTRIAL PROPERTY ASSOCIATES*

[mark.tsukuda.ipa@gmail.com](mailto:mark.tsukuda.ipa@gmail.com)

CA LICENSE NO. 420822

408.656.5316

**STEVEN DWYER**

*INDUSTRIAL PROPERTY ASSOCIATES*

[iparealestate@comcast.com](mailto:iparealestate@comcast.com)

CA LICENSE NO. 00664151

408.691.4973



**PRIME COMMERCIAL**  
INCORPORATED



[www.primecommercialinc.com](http://www.primecommercialinc.com)



408.879.4000 (OFFICE)

**Prime Commercial, Incorporated** © 2026 Prime Commercial, Inc. has obtained the information contained herein from sources we deem reliable, however, we have not verified its accuracy and make no guarantee, warranty or representation about it. It is subject to errors, modification, omission, change of price and/or terms, prior lease sale or financing, or withdraw without notice. It may include projections, opinions, or assumptions or estimated for example only, and they may represent current or future performance of the property. You and your tax and legal advisors should conduct your own of the property and transaction. The information provided in this brochure are estimates only, not representations, and are not intended to be relied upon for any purpose. Demographics obtained from esri. Select photos courtesy of Costar Group, Inc.

