

# PARK BUILDING

6400 Goldsboro Road  
Bethesda, MD 20817

TRIUMPH



Leasing Information:  
301.304.8300

**Paul "Rocky" Kern**    **Richard Coppola**  
301.304.8399            301.304.8405  
pkern@lpc.com        rcoppola@lpc.com

## Lincoln

Lincoln Property Company  
1101 Wootton Pkwy Suite 410  
Rockville, MD 20854

[www.lpc.com](http://www.lpc.com)

# PARK BUILDING

Office For Lease

75,133 SF

6400 Goldsboro Road | Bethesda, MD 20817



## Property Highlights

- Serene, park-like setting with easy access to I-495 and Massachusetts Avenue.
- Free parking (2.40 / 1,000 SF).
- Suite 500: Full floor available immediately. High-end finishes.

## Availabilities

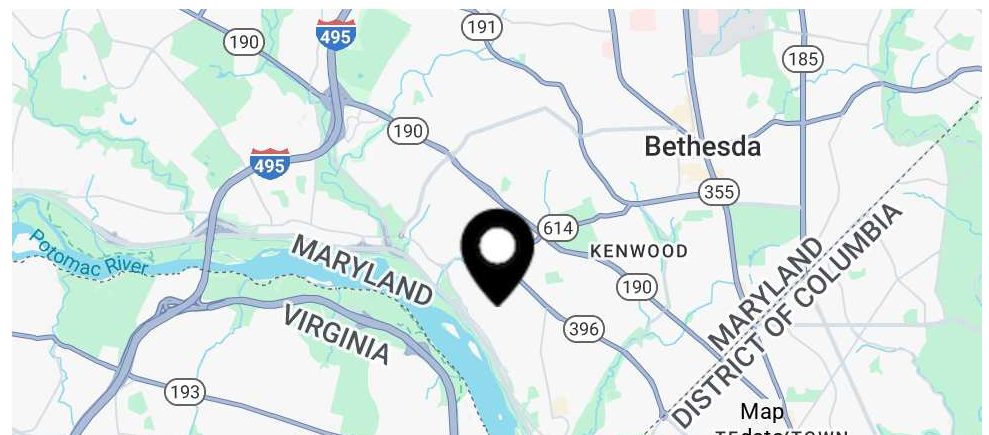
## SF

## Date Available

Suite 200*	3,000 - 5,406 SF	Immediately
Suite 205*	1,046 SF	Immediately
Suite 210*	966 SF	Immediately
Suite 500	15,700 SF	Immediately

## Text Headline

\*Contiguous 7,418 SF Block



**Paul "Rocky" Kern**   **Richard Coppola**

301.304.8399  
pkern@lpc.com

301.304.8405  
rcoppola@lpc.com

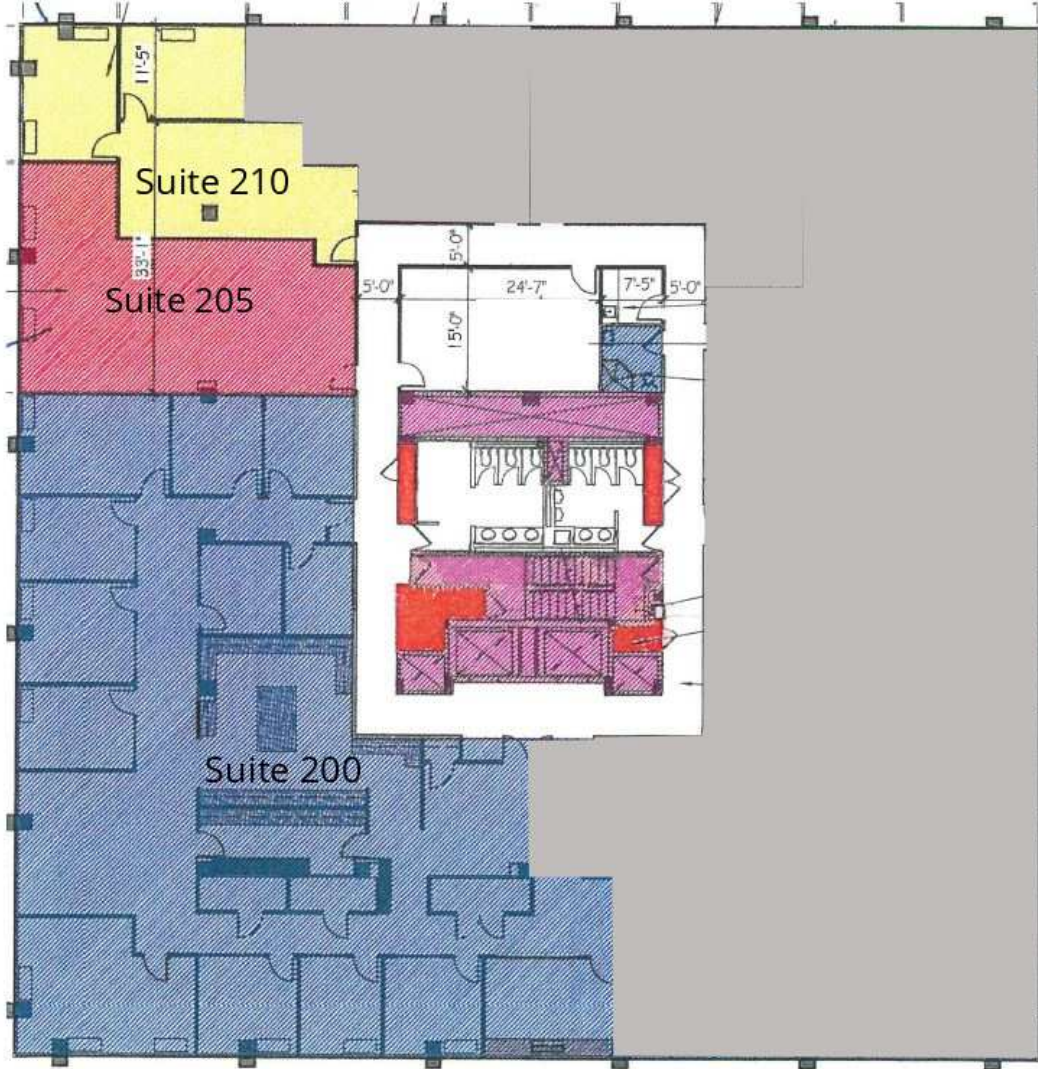
**Lincoln**

# PARK BUILDING

6400 Goldsboro Road | Bethesda, MD 20817

2nd Floor

966 - 7,418 SF



Suite	Size	Description
Suite 200*	3,000 - 5,406 SF	Available immediately. Suites 200, 205 & 210 can be combined for a 7,418 SF block.
Suite 205*	1,046 SF	Available Immediately. Suites 200, 205 & 210 can be combined for a 7,418 SF block.
Suite 210*	966 SF	Available immediately. Suites 200, 205 & 210 can be combined for a 7,418 SF block.

**Paul "Rocky" Kern**    **Richard Coppola**  
301.304.8399            301.304.8405  
pkern@lpc.com        rcoppola@lpc.com

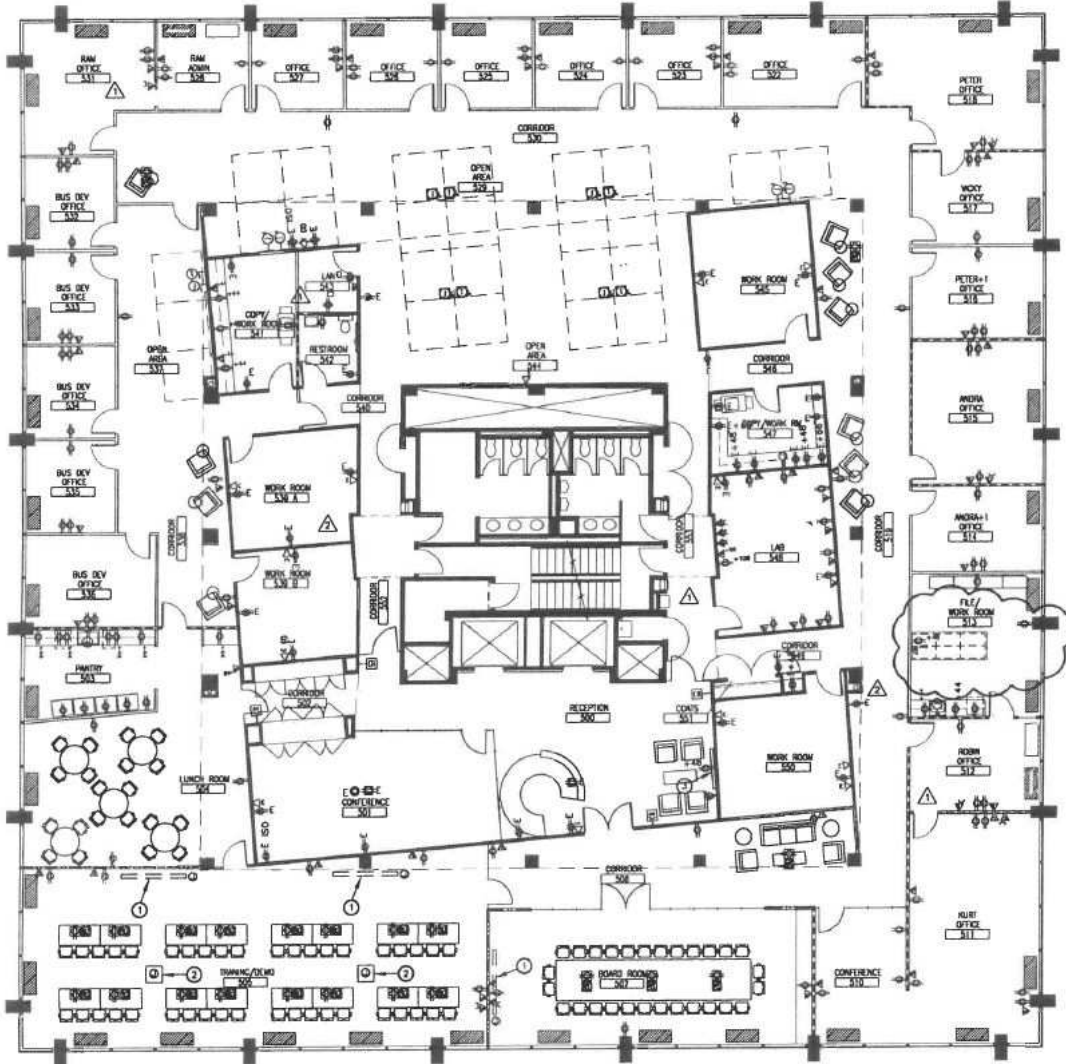
# Lincoln

# PARK BUILDING

6400 Goldsboro Road | Bethesda, MD 20817

Suite 500

15,700 SF



Suite	Size	Description
Suite 500	15,700 SF	Full floor available immediately

Paul "Rocky" Kern Richard Coppola  
 301.304.8399 301.304.8405  
 pkern@lpc.com rcoppola@lpc.com

**Lincoln**



# PARK BUILDING

6400 Goldsboro Road  
Bethesda, MD 20817



Leasing Information:  
301.304.8300

**Paul "Rocky" Kern**  
301.304.8399  
pkern@lpc.com

**Richard Coppola**  
301.304.8405  
rcoppola@lpc.com

## Lincoln

Lincoln Property Company  
1101 Wootton Pkwy Suite 410  
Rockville, MD 20854

[www.lpc.com](http://www.lpc.com)