

**FOR LEASE -850 SF +/-  
LOWER LEVEL COMMERCIAL CONDO  
185 Broad Street, Unit D, Milford, CT**

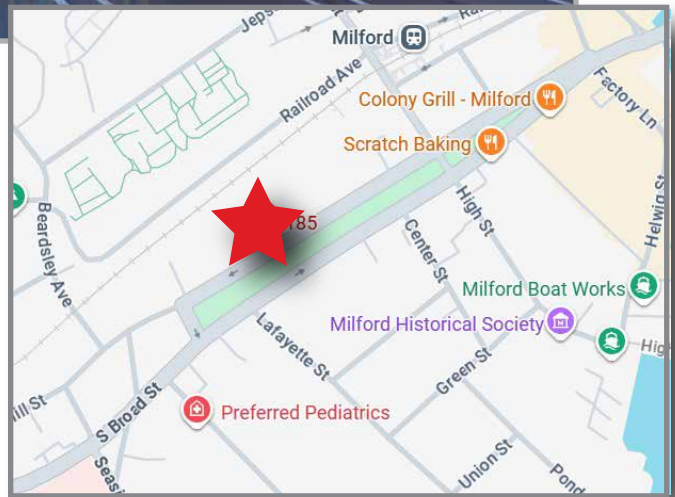


**COLONIAL PROPERTIES**



**UNIT INFORMATION**

**Lease Price:** \$2,000/Month  
**Utilities:** Included in rent  
**Avail. Sq. Ft:** 850 SF +/-  
**Occupancy:** Immediate  
**Zoning:** MCDD  
**Location:** Downtown Milford



**HIGHLIGHTS**

- Lower level commercial condo
- Located Downtown district of Milford
- Walkable to Town Green, Shops & Restaurants
- Convenient access to I-95, Route 1, and train station
- Ideal for businesses seeking central, client friendly location



200 Boston Post Road, Orange, CT 06477



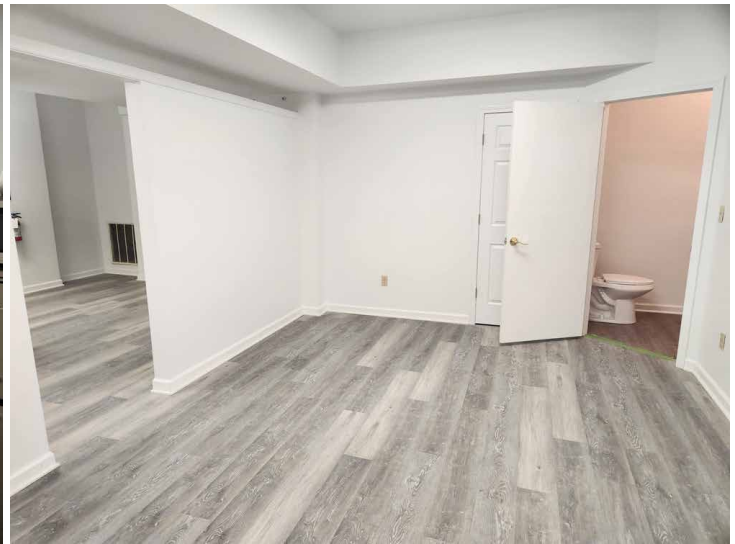
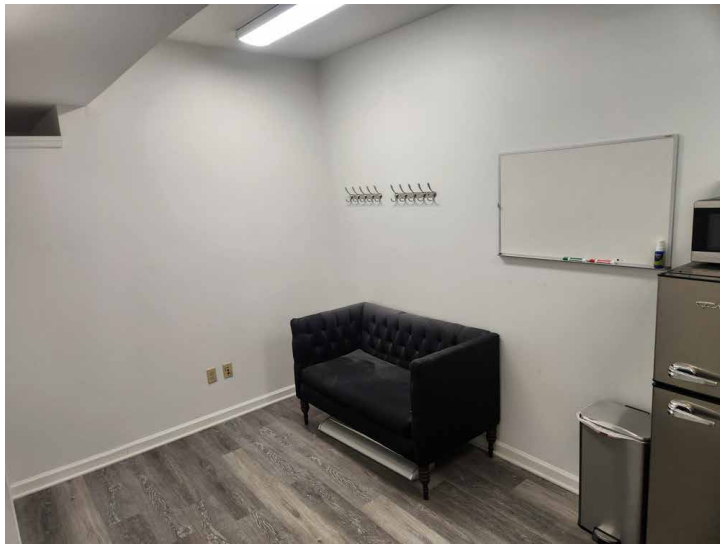
**Fred A. Messore**  
*Sr. Vice President/Broker*  
c: 203-988-6298 w: 203-795-8060  
fred@colprop.com



**FOR LEASE -850 SF +/-  
LOWER LEVEL COMMERCIAL CONDO  
185 Broad Street, Unit D, Milford, CT**



**COLONIAL PROPERTIES**



**PROPERTY DESCRIPTION**

850 SF in the heart of Downtown Milford at 185 Broad Street, a lower-level commercial condominium offering a versatile and affordable space for a variety of professional or service-based uses. This well-maintained unit provides a functional layout ideal for office, studio, wellness, or specialty retail operations seeking a convenient central location.

The property benefits from close proximity to the Milford Green, restaurants, retail amenities, and major transportation routes, making it easily accessible for both clients and employees. With immediate availability, this space presents an excellent opportunity for businesses looking to establish or expand their presence in one of Milford's most desirable commercial districts.

**FOR LEASE -850 SF +/-**  
**LOWER LEVEL COMMERCIAL CONDO**  
185 Broad Street, Unit D, Milford, CT



**COLONIAL PROPERTIES**

