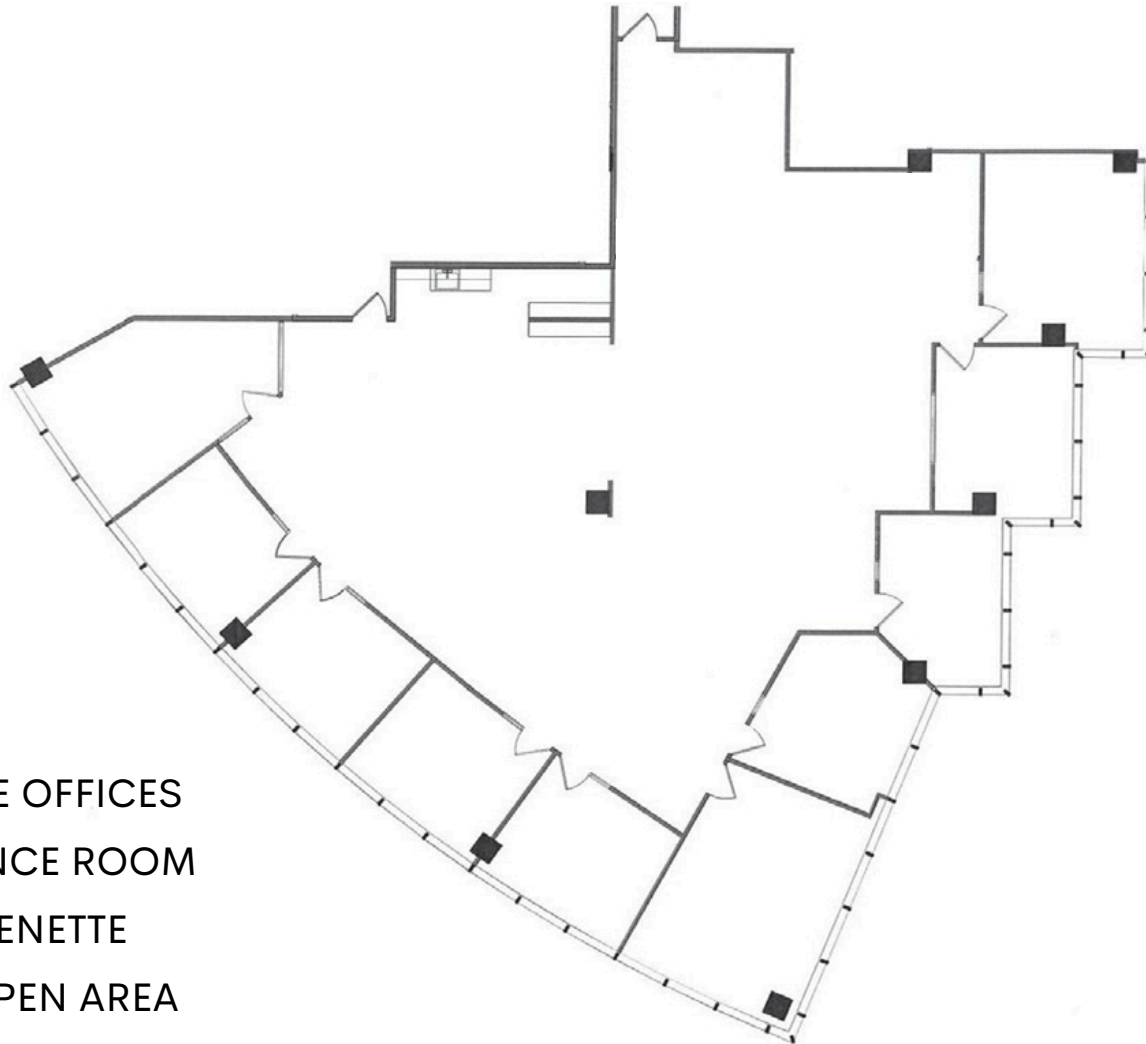


4 Hutton Centre Dr, Santa Ana, CA 92707

SUITE 220 ±5,583 SF



- 9 PRIVATE OFFICES
- CONFERENCE ROOM
- KITCHENETTE
- LARGE OPEN AREA

Robin Singh
Senior Vice President
Lic #01992380
rsingh@lpc.com
O 949.415.5026

Garrick Shupe
Executive Director
Lic #01445908
gshupe@lpc.com
O 949.415.5031

Lincoln