

# PRIME RETAIL SPACE FOR LEASE

3,445 SF AVAILABLE

## Ridgemoor Commons

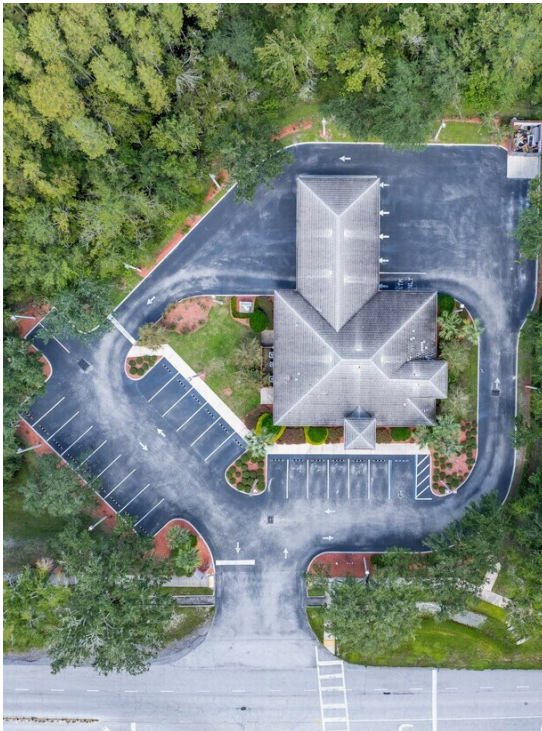
4949 Ridgemoor Boulevard

Palm Harbor, FL 34685



### PROPERTY HIGHLIGHTS

- 3,445 sq ft freestanding building
- 65' wide x 53' deep
- Open to offers
- Ample parking
- Surrounding home values - Up to \$1 Million
- Over 128,000 Residents In 5 Mile Radius
- High Traffic Area - 56,000 AADT



The information contained herein has been obtained from sources deemed reliable but is subject to verification, change, withdrawal without notice and is submitted without warranty as to accuracy by European Equities Corporation.



EUROPEAN EQUITIES  
CORPORATION

**David McComas**

Direct: 727.410-2800

dmccomas@europeanequities.com

18167 US 19 N, Suite 450

Clearwater, Florida 33764

www.europeanequities.com