



1800  
Alexander Bell Drive

RESTON'S

**BEST VALUE**

# BUILDING FEATURES



Debt Free Building Under Strong New Ownership



Updated Common Areas & Bathrooms



New Conference Center



Multiple Balconies Available



On-site Fitness Facility, Locker Rooms



W&OD Trail Adjacent to Building



Convenient Access to Dulles Toll Road, Reston Town Center & Wiehle-Reston East Metro



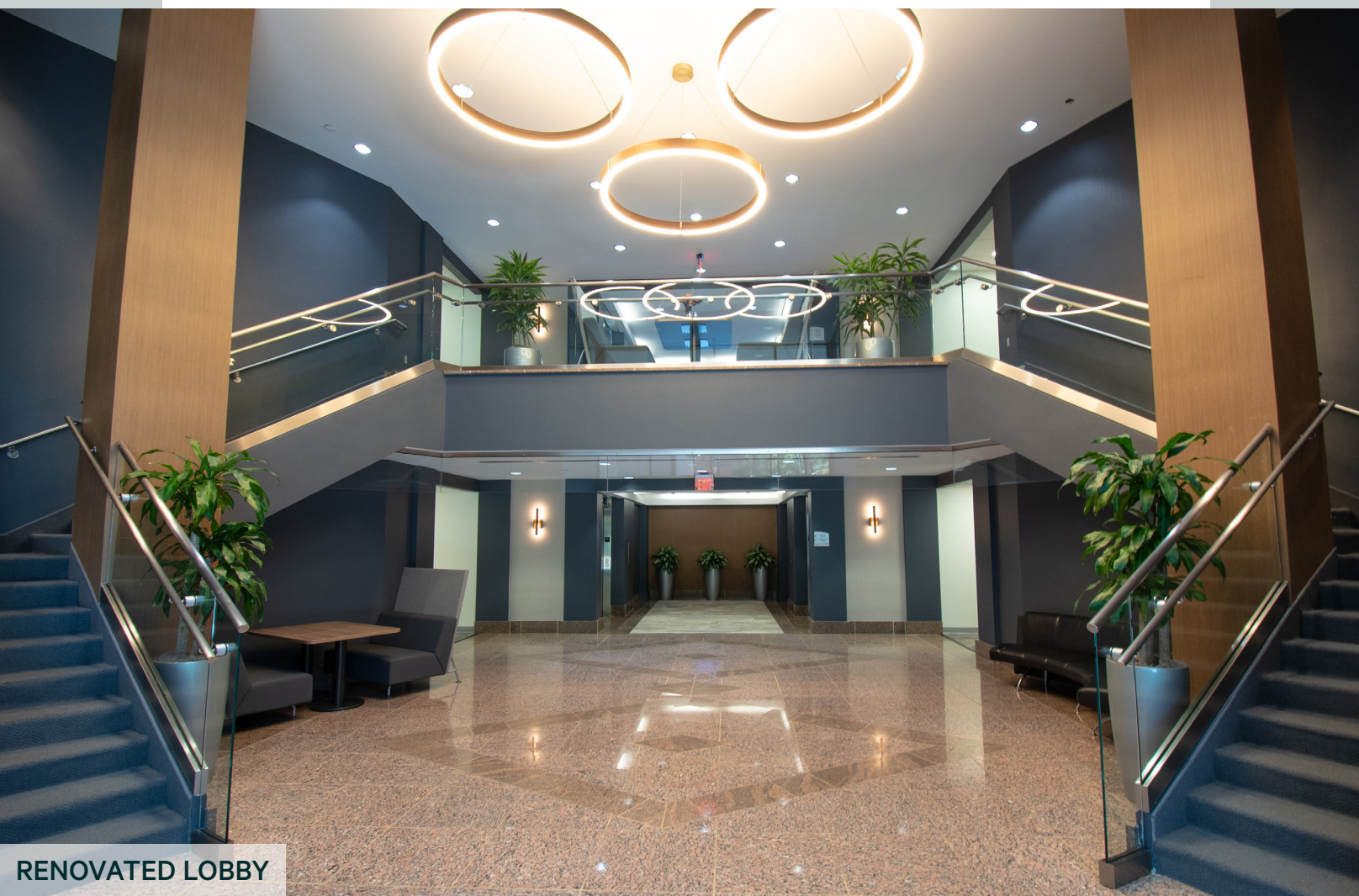
3.5/1,000 RSF Parking Ratio



Covered Parking Available



CONFERENCE CENTER



RENOVATED LOBBY

# CAPITAL IMPROVEMENT

**\$2.6M**

Capital Expenditures Since 2018

**\$1.8M**

HVAC System

**\$450k**

Building Waterproofing

**\$175k**

Lobby Entrance Update

**\$90k**

Corridors Update

**\$4.1M**

Tenant Improvements

# THE OPPORTUNITY

1800 Alexander Bell Drive is the place to be...



15 shopping centers within a 10-minute drive offers a diverse & thriving amenity base



Toll Road proximity allows quick access to downtown Washington, multiple airports & a broad retail base



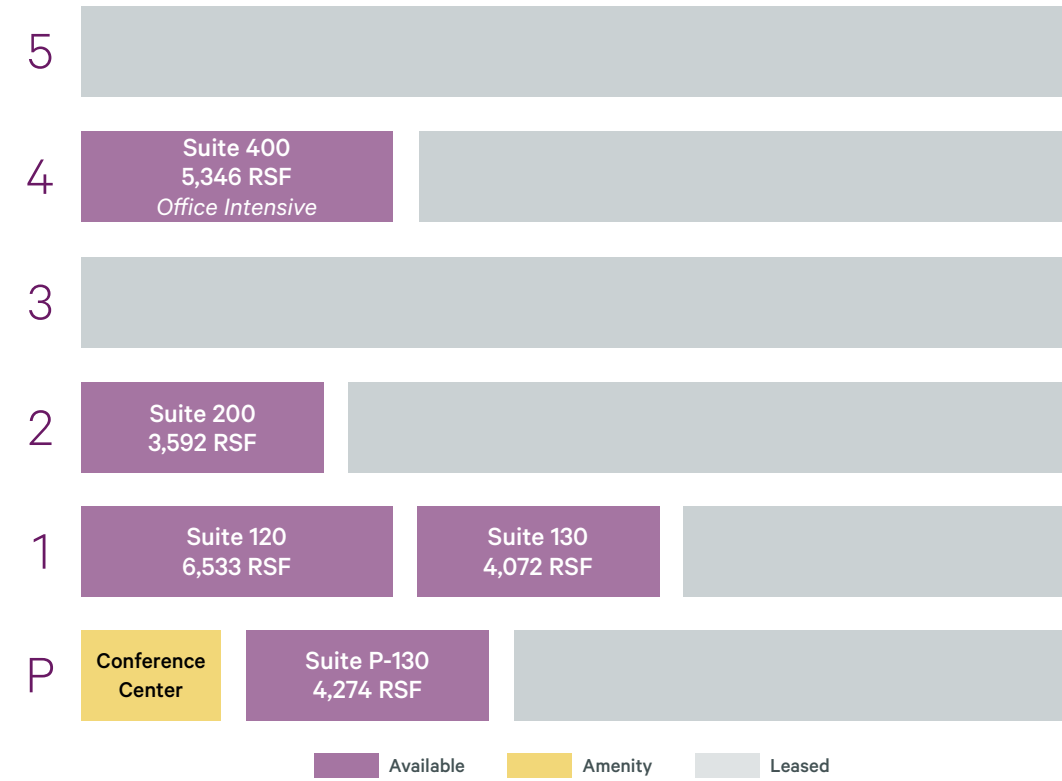
One mile from Wiehle-Reston Silver Line station



Silver Line's second phase opened in 2020 with connectivity to Reston Town Center, Dulles International Airport and Loudoun County



# AVAILABILITY



**\$27/SF**  
Rental Rate  
Base Year Lease

**\$35/SF** or **Move-In Ready**  
Tenant Improvement Allowance

- Landlord has ability to finance more tenant improvement allowance
- Ability to fund tenant improvement allowance without lender approval

RESTON, VIRGINIA

# THE AREA

Situated in the heart of the Dulles Tech Corridor, Reston, Virginia was voted in 2018 as one of the Best Places to Live in Virginia by Money Magazine. Virginia's first planned community, Reston combines a strategic business location midway between Washington DC and Dulles International Airport, with walkable, quality of life-enhancing amenities that include Metro, Reston Town Center and numerous community benefits such as the W&OD walk/bike path.

## SHOPPING

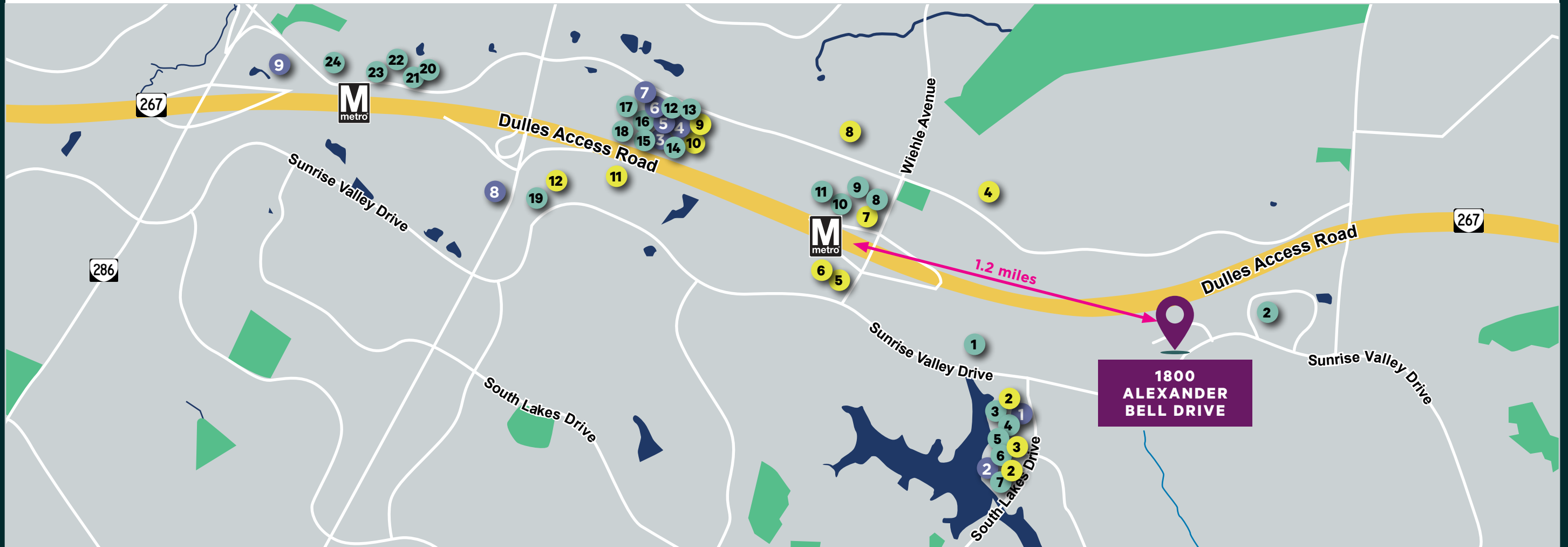
- 1 Safeway
- 2 CVS
- 3 Whole Foods
- 4 LOFT
- 5 CVS
- 6 Michael's
- 7 Total Wine
- 8 Wegmans
- 9 Target

## DINING

- 1 Carolina's Deli
- 2 Uptown Cafe
- 3 Lakeside Asia Cafe
- 4 Cafesano
- 5 Red's Table
- 6 The Red Bird
- 7 Starbucks
- 8 Matchbox
- 9 Founding Farmers
- 10 Davio's Northern Italian Steakhouse
- 11 Big Buns
- 12 Zoe's Kitchen
- 13 Brown Bag
- 14 Bonchon
- 15 Tropical Smoothie
- 16 Five Guys
- 17 The Melting Pot
- 18 Saa Thai & Sushi
- 19 MyHome Thai Bistro
- 20 Tiki Thai
- 21 Kook Dogg Cafe
- 22 Nando's PERI-PERI
- 23 Cooper's Hawk
- 24 Chick-fil-A

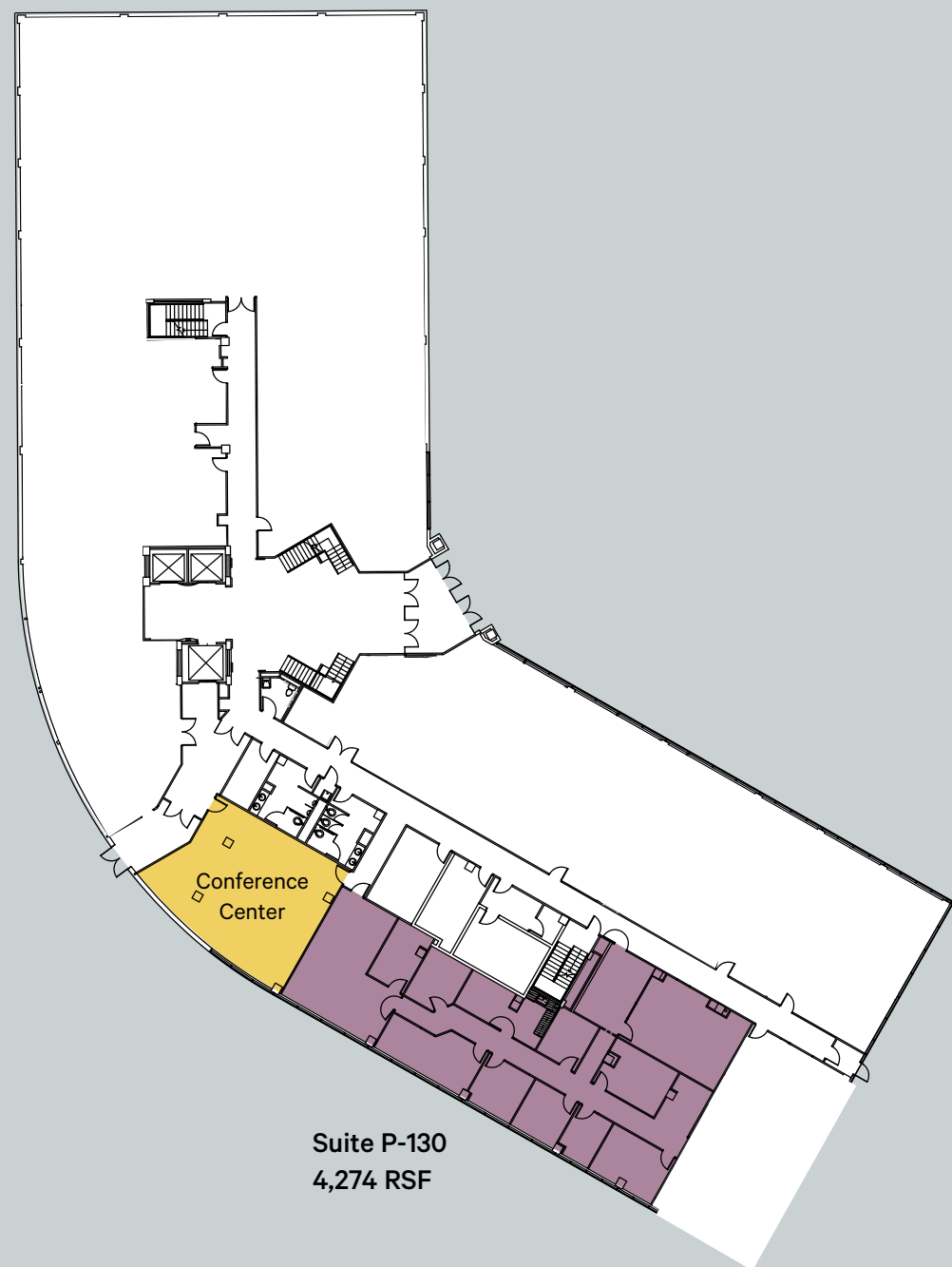
## LIFESTYLE

- 1 Truist
- 2 The UPS Store
- 3 Hand & Stone Massage
- 4 SkateQuest
- 5 Fed-Ex Office Center
- 6 United Bank
- 7 Scissors & Scotch
- 8 OneLife Fitness
- 9 Truist
- 10 Spa Noa
- 11 The Westin Hotel - Reston
- 12 Sheraton Hotel - Reston



1800 ALEXANDER BELL DRIVE

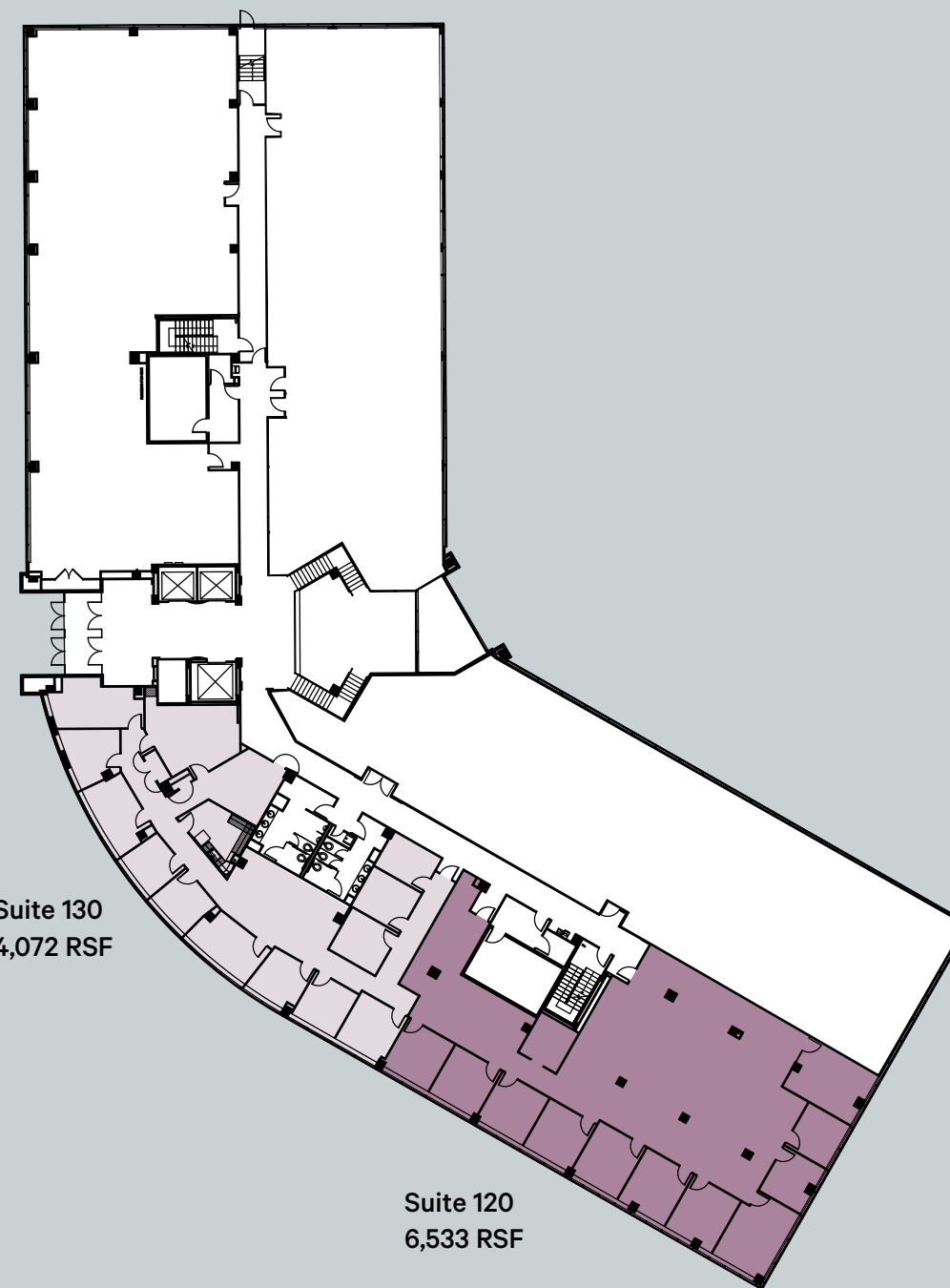
# PLAZA FLOOR



Suite P-130  
4,274 RSF

1800 ALEXANDER BELL DRIVE

# FIRST FLOOR

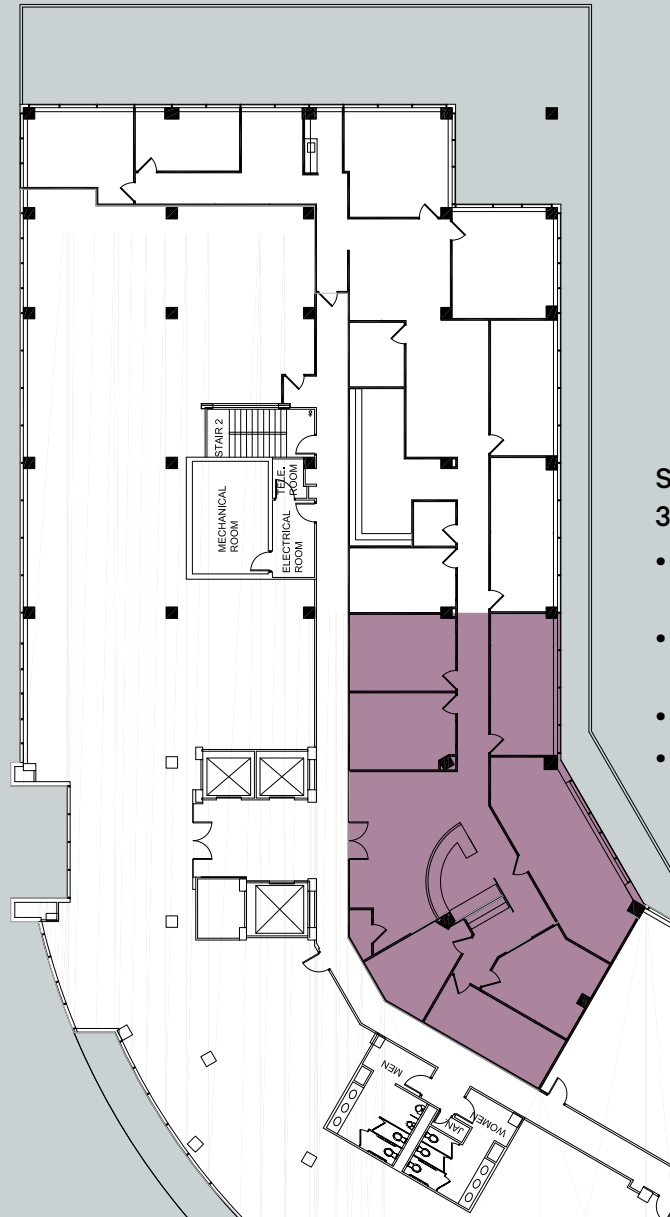


Suite 130  
4,072 RSF

Suite 120  
6,533 RSF

*Contiguous to 10,605 RSF*

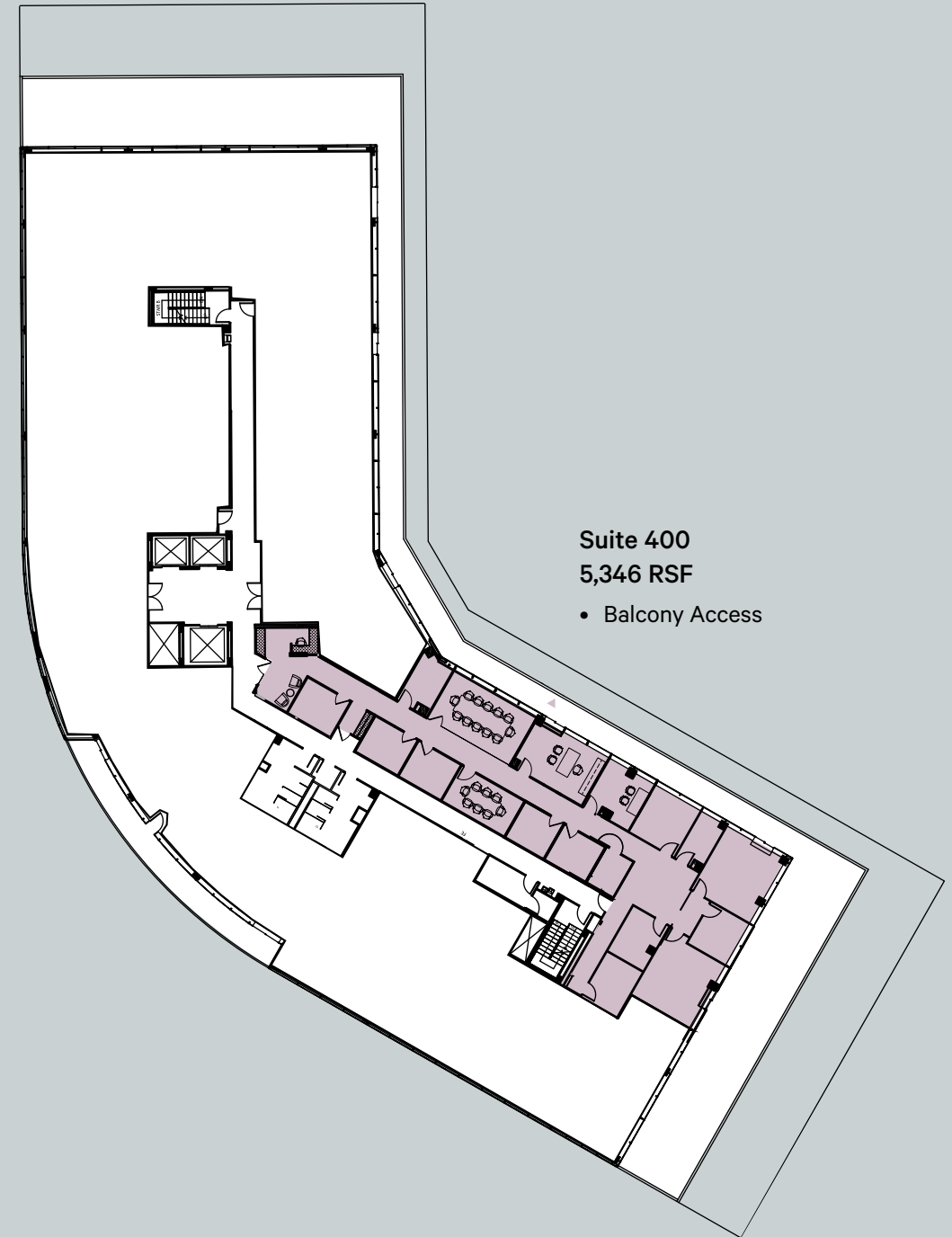
# SECOND FLOOR



**Suite 200**  
3,592 RSF

- Prominent Elevator Lobby Exposure
- Tenant-exclusive Balcony
- Occupancy – 90 Days
- Furniture Available

# FOURTH FLOOR



**Suite 400**  
5,346 RSF

- Balcony Access

# 1800

Alexander Bell Drive

## Contact Us

**John DiCamillo**  
+1 703 734 4723  
[john.dicamillo@cbre.com](mailto:john.dicamillo@cbre.com)

**Miles Collins**  
+1 703 554 5393  
[miles.collins@cbre.com](mailto:miles.collins@cbre.com)

© 2026 CBRE, Inc. All rights reserved. This information has been obtained from sources believed reliable, but has not been verified for accuracy or completeness. You should conduct a careful, independent investigation of the property and verify all information. Any reliance on this information is solely at your own risk. CBRE and the CBRE logo are service marks of CBRE, Inc. All other marks displayed on this document are the property of their respective owners, and the use of such logos does not imply any affiliation with or endorsement of CBRE. Photos herein are the property of their respective owners. Use of these images without the express written consent of the owner is prohibited.

**CBRE**