

# Grant Building

10 Mechanic St, Worcester, MA 01608

**Cortland** Presented by  
COMMERCIAL Cortland Commercial LLC



## Price: \$20.00 /SF/YR

The Grant Building, located at 10 Mechanic Street, is a centrally located professional office building in the heart of Worcester's Downtown Central Business District. Spanning over 57,000-square-feet across three floors, the property features a distinctive all-glass façade.

Experience on-site covered parking in the garage, an immersive multi-level center atrium, on-site full-service dining, and recently renovated common areas and restrooms. An expansive skylight also floods interior spaces with natural light throughout the workday.

Second-floor office space is currently available. Enjoy a fully carpeted suite that wraps around a bright, center-core atrium that includes space for individual workstations, private offices, and a full employee kitchenette. Ground-level restaurant retail space is also available for lease for the first time in 10 years. This turn-key space is fully built-out and features a commercial kitchen with the option to include furniture if desired.

Strategically located within minutes of I-290 accessibility, the Grant Building sits directly adjacent to a municipal parking garage and within walking distance to numerous nearby amenities.

# Grant Building

10 Mechanic St, Worcester, MA 01608



Recently renovated professional office space building in downtown Worcester with office and retail space available.

Property features include underground-garage parking, upgraded common areas and bathrooms, and on-site dining.

Experience natural light-flooded interiors from expansive floor-to-ceiling window lines and a multi-level center atrium.

Ideally situated within hassle-free I-290 connectivity and in walking distance to numerous downtown amenities.

**Amy Abrams**

[amy@cortlandcommercialllc.com](mailto:amy@cortlandcommercialllc.com)

(508) 752-4968

**Cortland Commercial LLC**

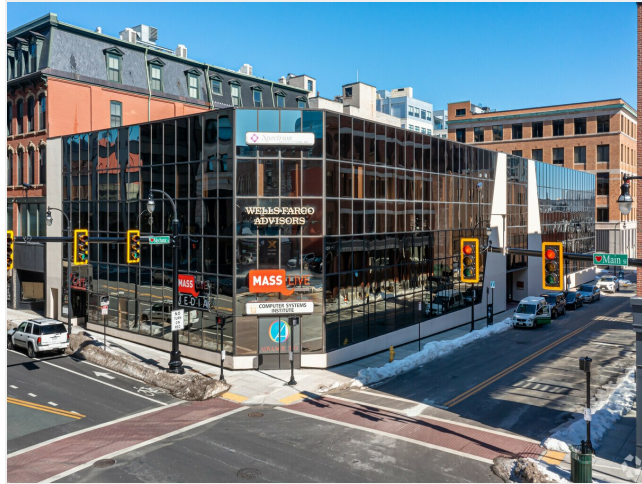
370 Main St  
Worcester, MA 01608



# Grant Building

10 Mechanic St, Worcester, MA 01608

10 Mechanic St, Worcester, MA 01608



Central Location

## Listing space

### 2nd Floor

Space Available	10,354 SF
Rental Rate	\$20.00 /SF/YR
Date Available	Now
Service Type	Modified Gross
Built Out As	Financial Services
Space Type	Relet
Space Use	Office
Lease Term	5 - 10 Years

Full break room kitchenette inside the suite. Suite wraps around an open atrium to expose natural light. Perfect for your next office opportunity. Space can be divisible to a 3,000 or 7,000 square foot space.

# Grant Building

10 Mechanic St, Worcester, MA 01608

## Property Photos



Natural Light Flooded



Elevator Landing

# Grant Building

10 Mechanic St, Worcester, MA 01608

## Property Photos



Energizing Work Environment



Rooftop View

# Grant Building

10 Mechanic St, Worcester, MA 01608

## Property Photos



Downtown Worcester Location

# Grant Building

10 Mechanic St, Worcester, MA 01608

## Location

