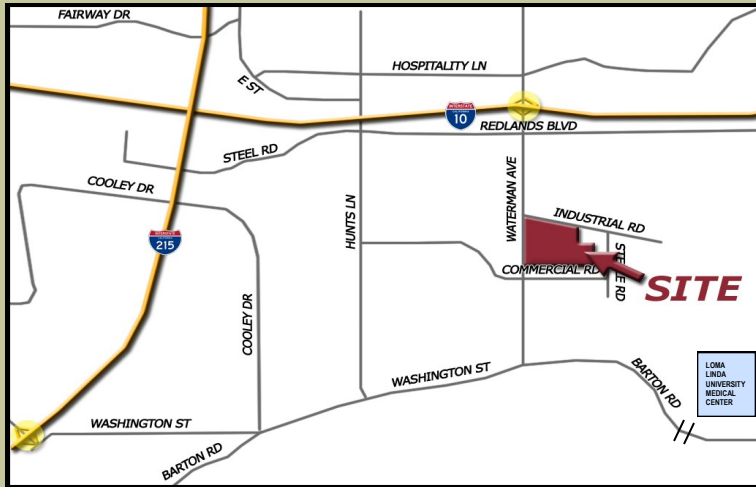


WATERMAN BUSINESS CENTER

OFFICE SPACE FOR LEASE
\$1,800/Month
750 SQUARE FEET

350 EAST COMMERCIAL ROAD, SUITE 115, SAN BERNARDINO



LOCATION:

- ◆ FIOS fiber optic internet services available
- ◆ 1/4 mile to/from Interstate 10. One mile to/from I-215
- ◆ Close to plentiful Hospitality Lane Amenities
- ◆ Loma Linda or San Bernardino Post Office Address
- ◆ Less than one mile to Loma Linda University Medical Center
- ◆ High Quality Professional Tenant Base

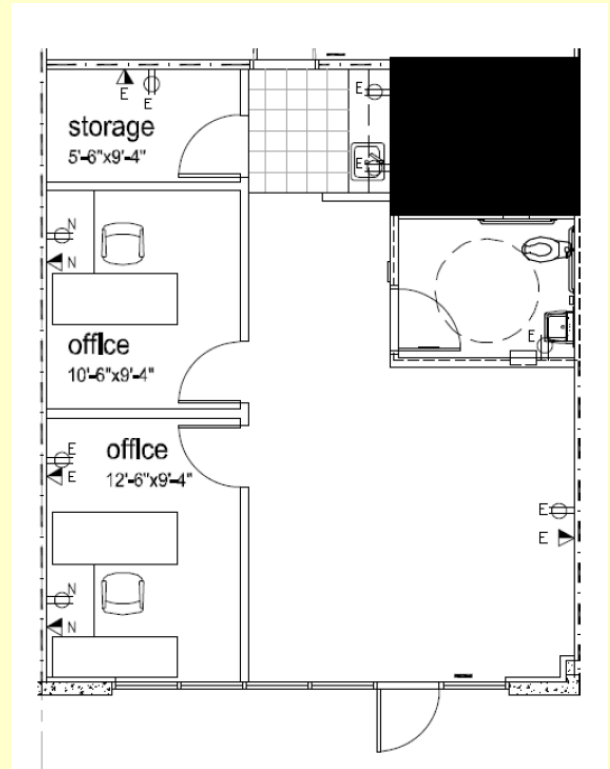
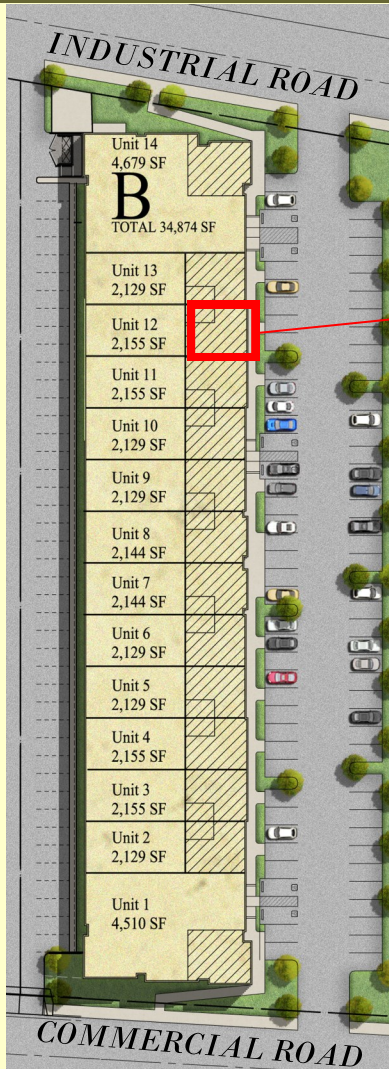


SEVENTH STREET DEVELOPMENT

Seventh Street Development
Scott Furniss (CA DRE#02069135)
sfurniss@7thsd.com
Craig Furniss (CA DRE#01057073)
cfurniss@7thsd.com
(562) 427-7724

WATERMAN BUSINESS CENTER

Suite A115—\$1,800/Month
Office Space For Lease
750 Square Feet



OFFICE FLOORPLAN

FEATURES:

- ◆ Building Signage Rights
- ◆ Tenant has 100% Control of the hygiene in this space
- ◆ Private entrance, private restroom & coffee bar. Parking directly in front.
- ◆ Two Private Offices and Storage Room
- ◆ Nightly Security Patrols
- ◆ High Image Professional Office Environment
- ◆ Home to Seventh Street Development, Loma Linda University, Amber Pharmacy



SAN BERNARDINO'S HIGHEST QUALITY BUSINESS PARK

Seventh Street Development
Scott Furniss (CA DRE#02069135)
sfurniss@7thsd.com
Craig Furniss (CA DRE#01057073)
cfurniss@7thsd.com
(562) 427-7724



SEVENTH STREET DEVELOPMENT