



85
MERRIMAC
STREET
BOSTON, MA

Multiple Floors Available Now!

Floor 2 (full-floor) - 5,450 SF

Floor 4 - 2,684 SF

Floor 5 - 1,837 SF



Immediate access to public transportation on MBTA Green Line, Orange Line and Commuter Rail



Steps from numerous restaurants, hotels, retail, and public parking



High ceilings & oversized windows



Abundant natural light



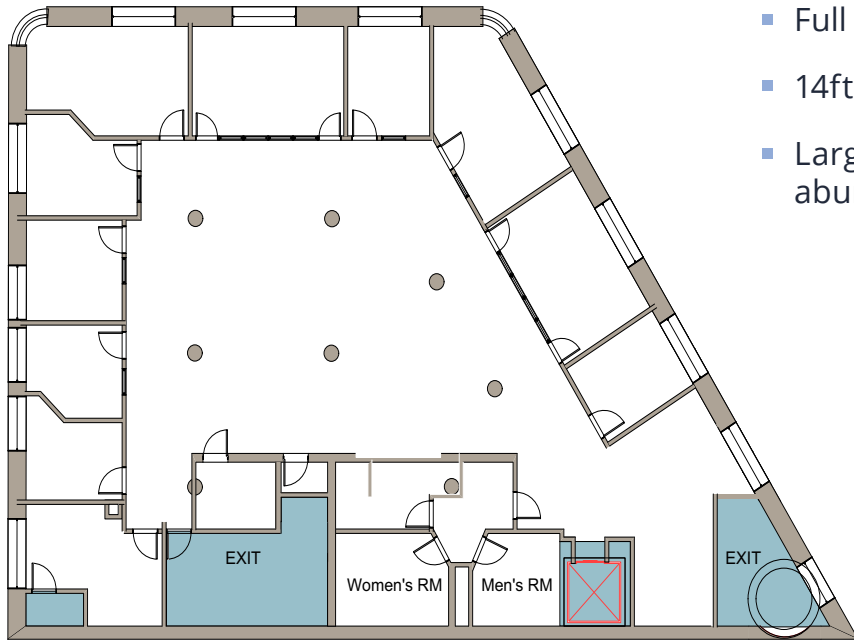
Only building in Bulfinch Triangle on the Historic Register

Kirk Weller, Senior Vice President
617.456.1363
kirk.weller@avisonyoung.com

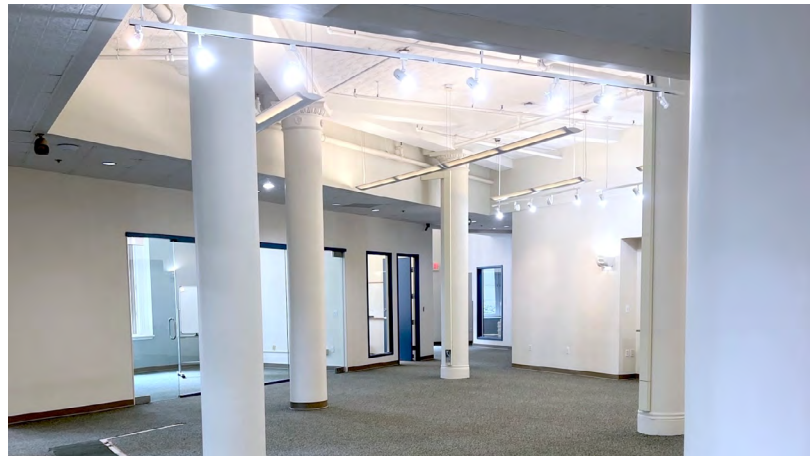
Jeff Gates, Principal
617.595.6015
jeff.gates@avisonyoung.com

**AVISON
YOUNG**

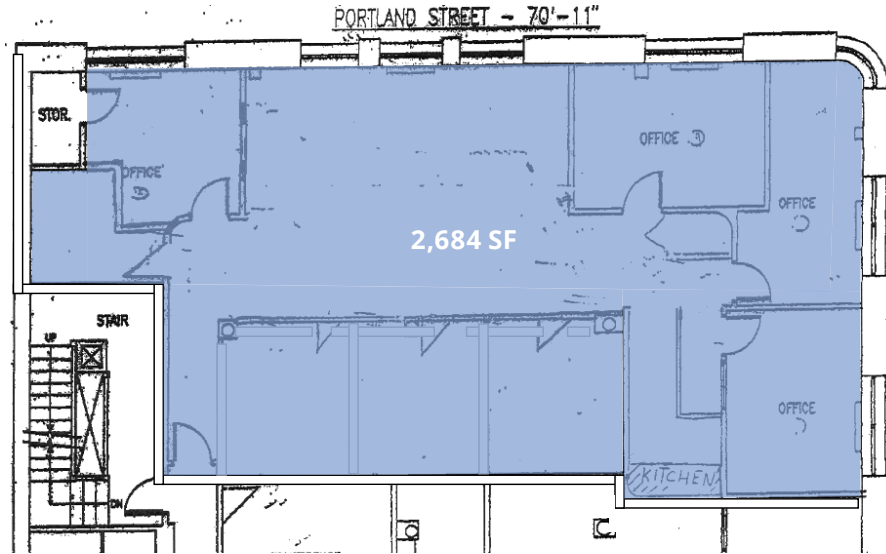
FLOOR 2 | 5,450 SF



- Full floor opportunity
- 14ft ceilings
- Large windows providing abundant natural light

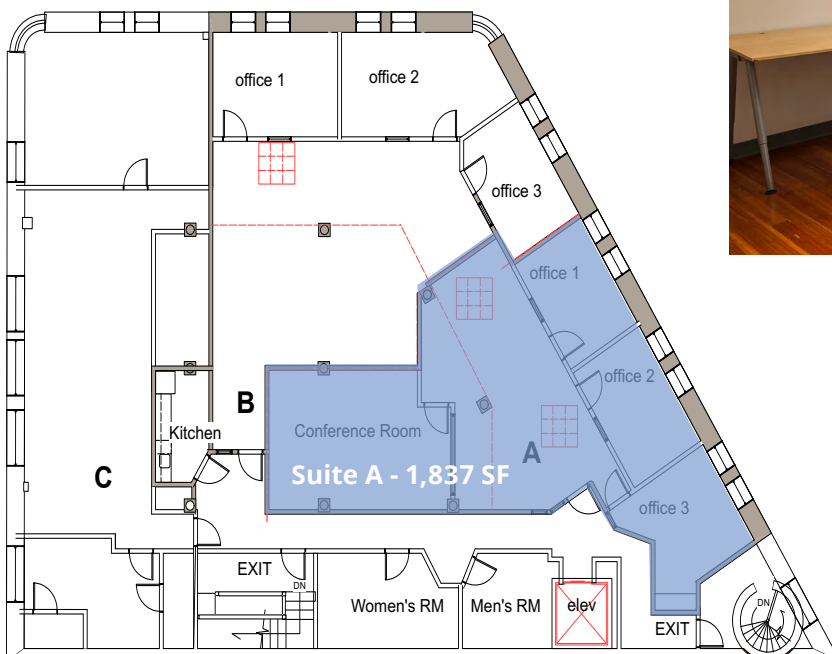


FLOOR 4 | 2,684 SF



FLOOR 5 (SUITE A) | 1,837 SF

- Spec suite build-out
- 9ft ceilings
- Exposed, high ceilings with skylights providing abundant natural light
- Shared kitchen area





85

MERRIMAC
STREET

BOSTON, MA

For more information, please contact:

Kirk Weller, Senior Vice President

617.456.1363

kirk.weller@avisonyoung.com

Jeff Gates, Principal

617.595.6015

jeff.gates@avisonyoung.com

© 2025. Avison Young. Information contained herein was obtained from sources deemed reliable and, while thought to be correct, have not been verified. Avison Young does not guarantee the accuracy or completeness of the information presented, nor assumes any responsibility or liability for any errors or omissions therein.

**AVISON
YOUNG**