

FOR LEASE ± 1,000 - 2,450 SF

Stadium Walk Business Center

1721 - 1759 S. Claudina Way, Anaheim, CA



PROPERTY FEATURES

- Clean Business Park Environment
- Units From 1,000 - 4,308 SF
- No CAM Fees
- Major Street Frontage & Signage on Katella and Anaheim Way
- Possible Fenced Yard Area
- Parking Ratio (2:1)
- Each Unit With Separate Restrooms
- Ground Level Rear Loading
- Drive Around Truck Access
- Approximately 30,152 SF Business Park
- Immediate Access to 5 Freeway



ERIC SMITH, SIOR

Senior Vice President
714.935.2322
esmith@voitco.com
Lic. #01940591



NELSON SIMONS

Vice President
714.935.2315
nsimons@voitco.com
Lic. #02049713

Voit

REAL ESTATE SERVICES

FOR LEASE ± 1,000 - 2,450 SF

Stadium Walk Business Center

1721 - 1759 S. Claudina Way, Anaheim, CA

SITE PLAN



ERIC SMITH, SIOR
Senior Vice President
714.935.2322
teamsmith@voitco.com
Lic. #01940591



NELSON SIMONS
Vice President
714.935.2315
nsimons@voitco.com
Lic. #02049713

Voit
REAL ESTATE SERVICES

2400 E. Katella Ave., Suite 750, Anaheim, CA 92806 • 714.978.7880 • 714.978.9431 Fax • Lic #01991785

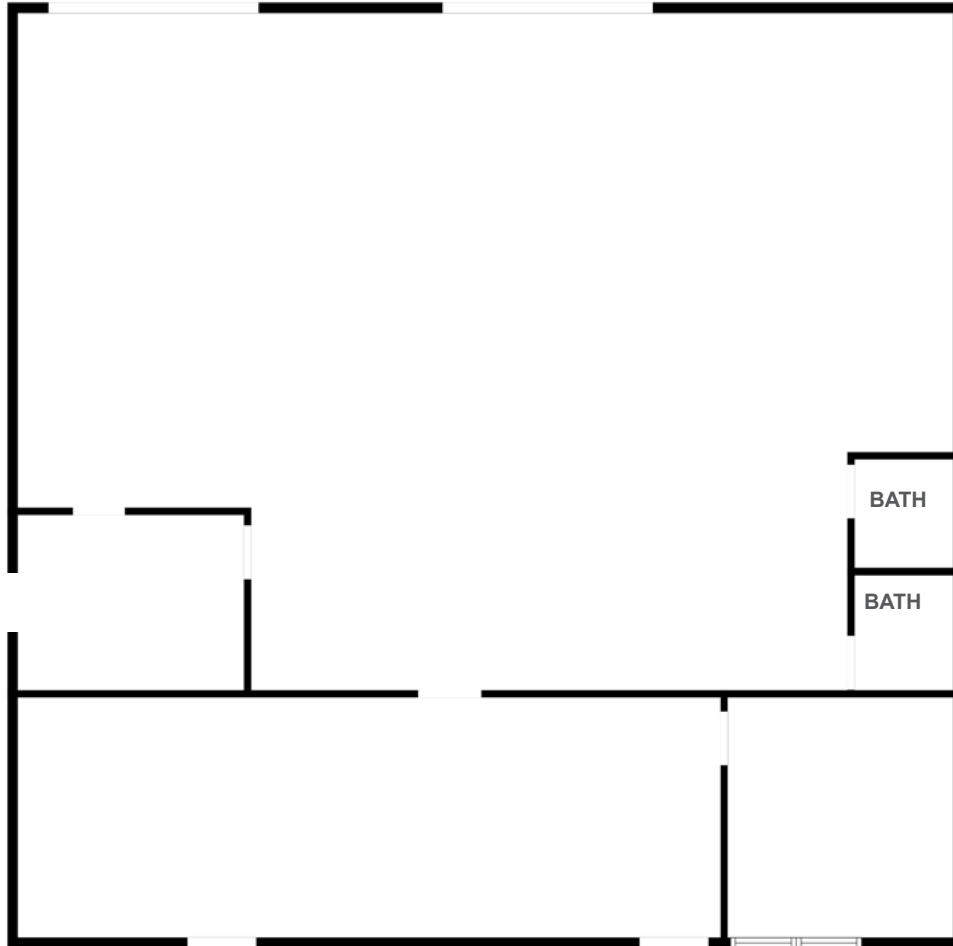
www.ericrandolphsmith.com

Licensed as Real Estate Salespersons by the DRE. The information contained herein has been obtained from sources we deem reliable. While we have no reason to doubt its accuracy, we do not guarantee it. ©2026 Voit Real Estate Services, Inc. All Rights Reserved. License #01991785.

FOR LEASE ± 1,000 - 2,450 SF

Stadium Walk Business Center

1721 - 1759 S. Claudina Way, Anaheim, CA



*Site plan not to scale.

AVAILABILITY

Address	Size	Office SF	Rate	Available	Comments
1721 S. Claudina	±2,450 SF	±636	\$1.55/SF Gross	Now	<ul style="list-style-type: none">• Two (2) GI Door• Two (2) Private Restrooms• High Speed Internet• Immediate Access To 5 Fwy• Located Near Disneyland



ERIC SMITH, SIOR
Senior Vice President
714.935.2322
teamsmith@voitco.com
Lic. #01940591



NELSON SIMONS
Vice President
714.935.2315
nsimons@voitco.com
Lic. #02049713

Voit
REAL ESTATE SERVICES

2400 E. Katella Ave., Suite 750, Anaheim, CA 92806 • 714.978.7880 • 714.978.9431 Fax • Lic #01991785

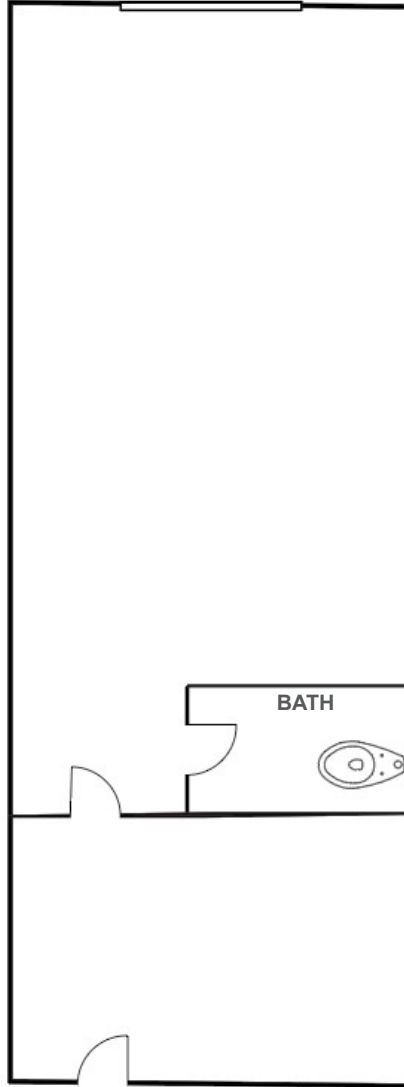
www.ericrandolphsmith.com

Licensed as Real Estate Salespersons by the DRE. The information contained herein has been obtained from sources we deem reliable. While we have no reason to doubt its accuracy, we do not guarantee it. ©2026 Voit Real Estate Services, Inc. All Rights Reserved. License #01991785.

FOR LEASE ± 1,000 - 2,450 SF

Stadium Walk Business Center

1721 - 1759 S. Claudina Way, Anaheim, CA



*Site plan not to scale.

AVAILABILITY

Address	Size	Office SF	Rate	Available	Comments
1727 S. Claudina	±1,000 SF	TBD	\$1.55/SF Gross	Now	<ul style="list-style-type: none">• One (1) GI Door• One (1) Private Restroom• High Speed Internet• Immediate Access To 5 Fwy• Located Near Disneyland



ERIC SMITH, SIOR
Senior Vice President
714.935.2322
teamsmith@voitco.com
Lic. #01940591



NELSON SIMONS
Vice President
714.935.2315
nsimons@voitco.com
Lic. #02049713

Voit

REAL ESTATE SERVICES

2400 E. Katella Ave., Suite 750, Anaheim, CA 92806 • 714.978.7880 • 714.978.9431 Fax • Lic #01991785

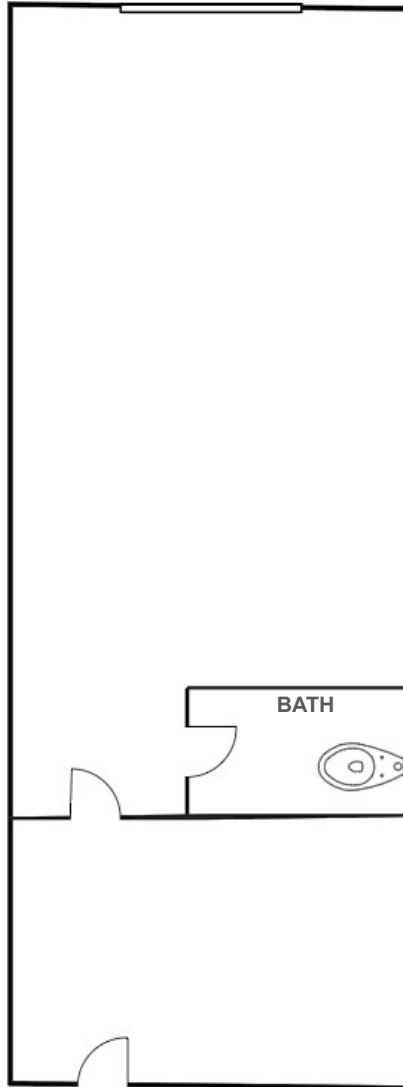
www.ericrandolphsmith.com

Licensed as Real Estate Salespersons by the DRE. The information contained herein has been obtained from sources we deem reliable. While we have no reason to doubt its accuracy, we do not guarantee it. ©2026 Voit Real Estate Services, Inc. All Rights Reserved. License #01991785.

FOR LEASE ± 1,000 - 2,450 SF

Stadium Walk Business Center

1721 - 1759 S. Claudina Way, Anaheim, CA



*Site plan not to scale.

AVAILABILITY

Address	Size	Office SF	Rate	Available	Comments
1741 S. Claudina	±1,600 SF	TBD	\$1.55/SF Gross	5/1/2026	<ul style="list-style-type: none">• One (1) Private Restroom• One (1) GL Door,• High-Speed Internet• Immediate Access To 5 Fwy• Located Near Disneyland



ERIC SMITH, SIOR
Senior Vice President
714.935.2322
teamsmith@voitco.com
Lic. #01940591



NELSON SIMONS
Vice President
714.935.2315
nsimons@voitco.com
Lic. #02049713

Voit

REAL ESTATE SERVICES

2400 E. Katella Ave., Suite 750, Anaheim, CA 92806 • 714.978.7880 • 714.978.9431 Fax • Lic #01991785

www.ericrandolphsmith.com

Licensed as Real Estate Salespersons by the DRE. The information contained herein has been obtained from sources we deem reliable. While we have no reason to doubt its accuracy, we do not guarantee it. ©2026 Voit Real Estate Services, Inc. All Rights Reserved. License #01991785.