



**DOMINION  
POINT**

21515 & 21525 RIDGE TOP CIRCLE | STERLING, VIRGINIA 20166

**STREAM**

**DOMINION POINT I**

21515 Ridgetop Circle  
Dulles, VA 20166

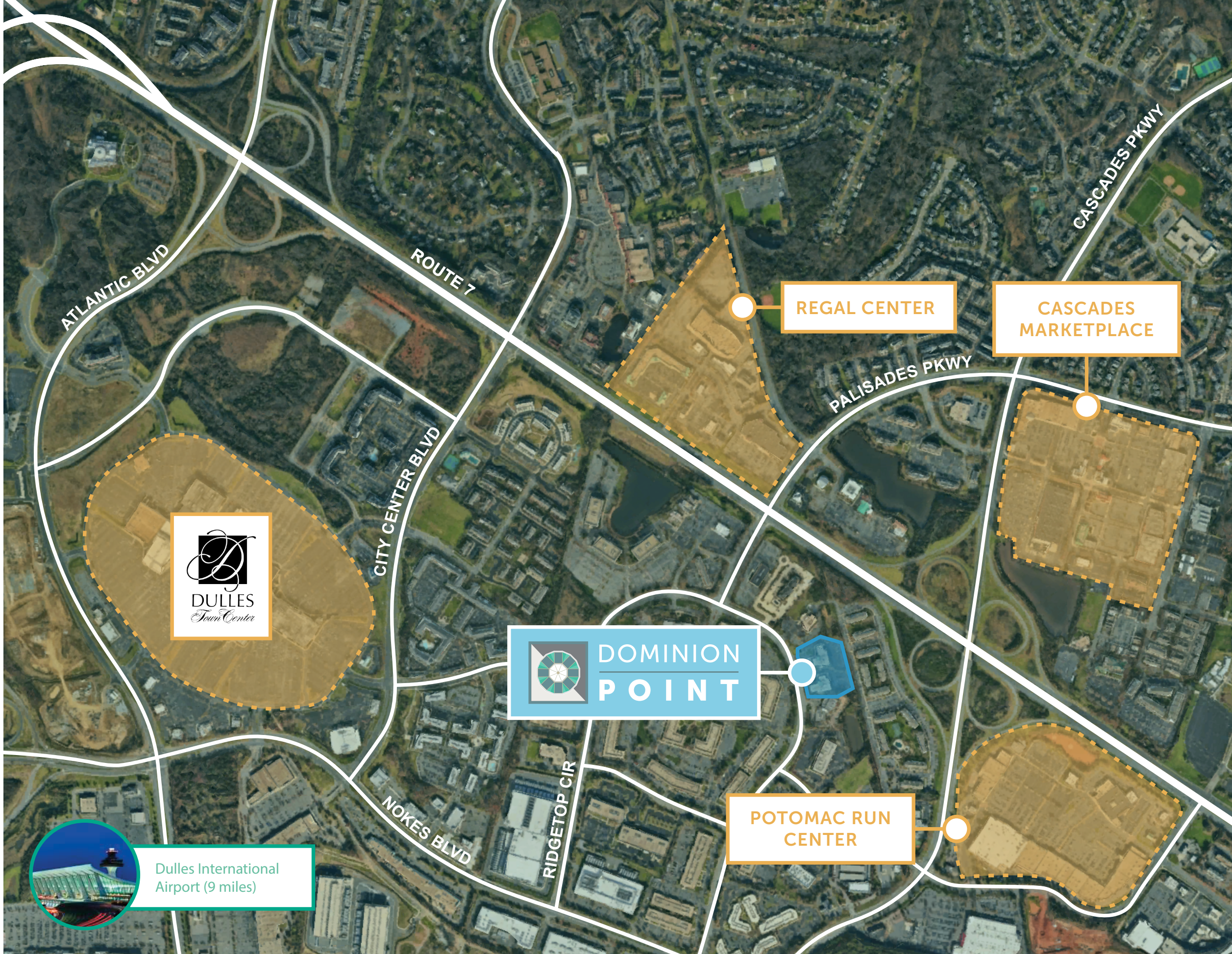
RBA	47,000 SF
Floors	3
Parking Ratio	3.40/1,000

**DOMINION POINT II**

21525 Ridgetop Circle  
Dulles, VA 20166

RBA	34,054 SF
Floors	2
Parking Ratio	3.40/1,000





Dulles International Airport (9 miles)

**DULLES TOWN CENTER**

- The Cheesecake Factory*
- P.F. Chang's*
- Romano's Macaroni Grill*
- Red Robin*
- The Green Turtle*
- Vapiano's*

**REGAL CENTER**

- Applebee's Grill & Bar*
- Chipotle Mexican Grill*
- Domino's Pizza*
- Firehouse Subs*
- Jersey Mikes*
- Subway*
- Thai Cuisine*

**CASCADES MARKETPLACE**

- BGR The Burger Joint*
- Corner Bakery Cafe*
- McDonald's*
- Starbucks*
- Giant*
- Gold's Gym*

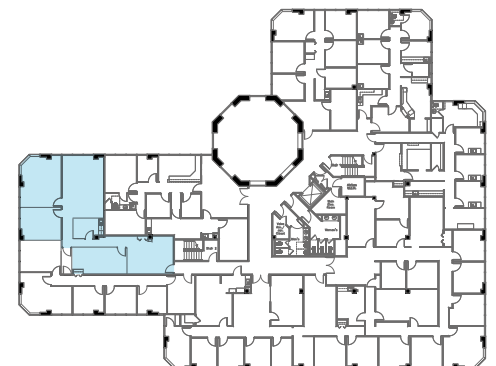
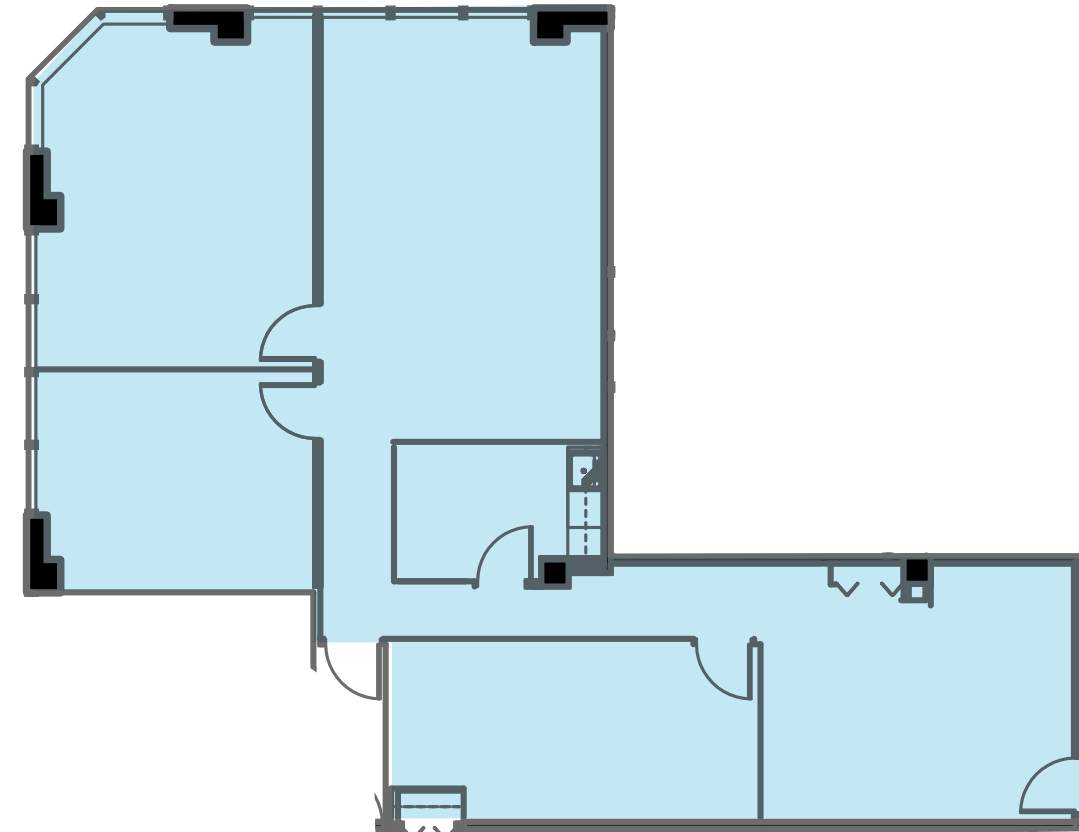
**POTOMAC RUN PLAZA**

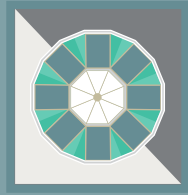
- Don Pablo's*
- Five Guys*
- Outback Steakhouse*
- Starbucks*
- Wendy's*
- Panera Bread*



DOMINION POINT II  
**Suite 270 | 1,845 SF**

*Available Immediately*





**DOMINION**  
**P O I N T**

**ANDREW HASSETT**

703.705.2921

[andrew.hassett@streamrealty.com](mailto:andrew.hassett@streamrealty.com)

**CAULLEY DERINGER**

703.705.2907

[caulley.deringer@streamrealty.com](mailto:caulley.deringer@streamrealty.com)

**ANABELLE GARTLAND**

703.574.3621

[anabelle.gartland@streamrealty.com](mailto:anabelle.gartland@streamrealty.com)



---

7900 Tysons One Place, Suite 280 | McLean, VA 22102 | 703.997.2200 | [streamrealty.com](http://streamrealty.com)

Copyright © 2024 Stream Realty Partners, All rights reserved.

The information contained herein was obtained from sources believed reliable; however, Stream Realty Partners, L.P. make no guarantees, warranties, or representations as to the completeness or accuracy thereof. The presentation of this property is submitted subject to errors, change of price, or conditions, prior sale or lease, or withdrawal without notice.