



FOR LEASE

For Lease | Retail

Prime Retail Opportunity On Tamiami Trail In The Heart Of Sarasota

5900 S Tamiami Trl, Suite 17, Sarasota, FL 34231

Michael Saunders & Company
LICENSED REAL ESTATE BROKER

1605 Main Street Suite 500 | Sarasota, FL |
941.957.3730 | MSCcommercial.com

PRESENTED BY:

SUSAN H. GOLDSTEIN LLC, CCIM, MBA

Senior Commercial Advisor
941.957.3730
susangoldstein@msccommercial.com



OFFERING SUMMARY

Available SF: 5,744± SF

Lease Rate: \$22.00 SF/yr (NNN)

Lot Size: March 1, 2026

Traffic Count: 24,700 APD

Zoning: CG

PROPERTY OVERVIEW

5,744± SF of retail space in the center of a vibrant 40,100 SF retail plaza. Ideal for retail, service, or professional business that can take advantage of the 65' storefront, foot traffic, and easy access to South Sarasota, Siesta Key, and Downtown Sarasota.

Join retailers, restaurants, and service providers such as G Fried Flooring America, Fyzical, Active Lifestyles/Snow Skiing Club, Phoenix Builders, Foxy Lady, Mama G's German Bakery, Energize Dance Studio, US Coin and Jewelry, Bella's Grooming, Michael Z Hair Salon, Bug Busters, and Just Fans

PROPERTY HIGHLIGHTS

- Available March 1, 2026
- Located in center of plaza
- 65±' of glass retail frontage
- Access and visibility from S Tamiami Trail (US 41)
- Currently includes three single-stall restrooms, secure area, and break area
- Easily reconfigured for a variety of floor plans

MSC

COMMERCIAL
REAL ESTATE

5900 S TAMiami TRAIL

SUITE 17, SARASOTA, FL 34231



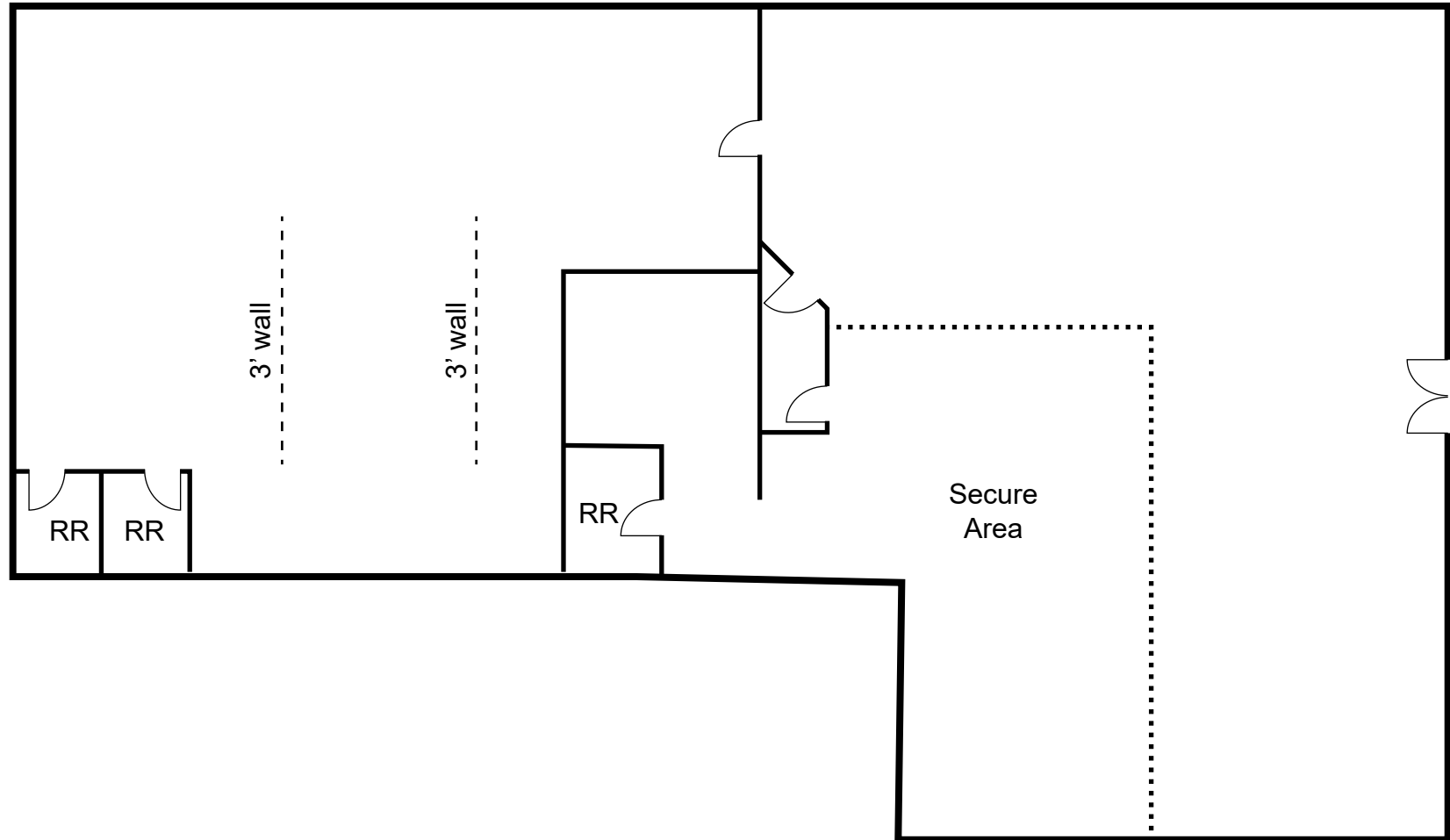
Michael Saunders & Company
LICENSED REAL ESTATE BROKER

1605 Main Street Suite 500 | Sarasota, FL
941.957.3730 | MSCcommercial.com

PRESENTED BY:

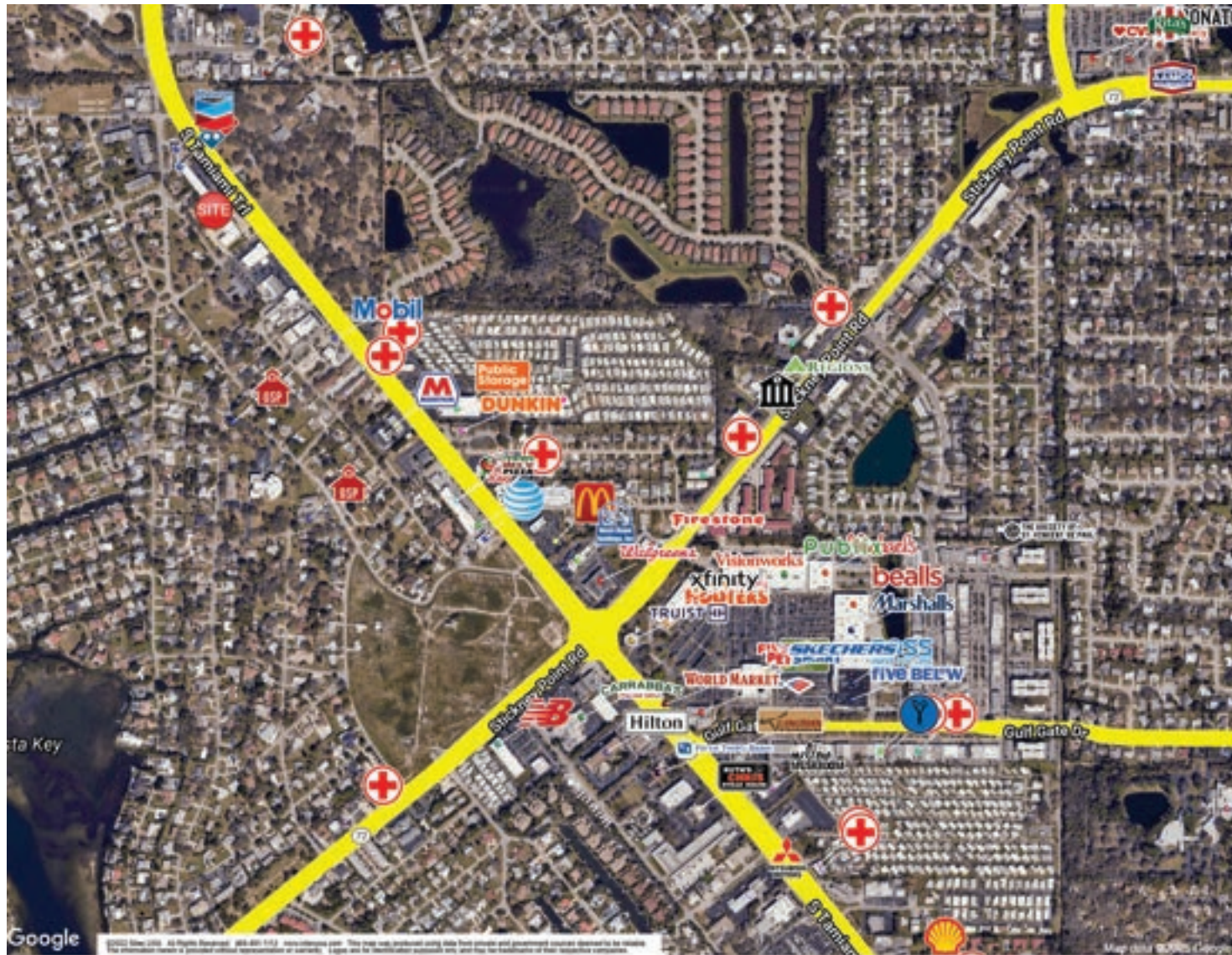
SUSAN H. GOLDSTEIN LLC, CCIM, MBA

Senior Commercial Advisor
941.957.3730
susangoldstein@msccommercial.com



5900 S TAMiami TRAIL

SUITE 17, SARASOTA, FL 34231

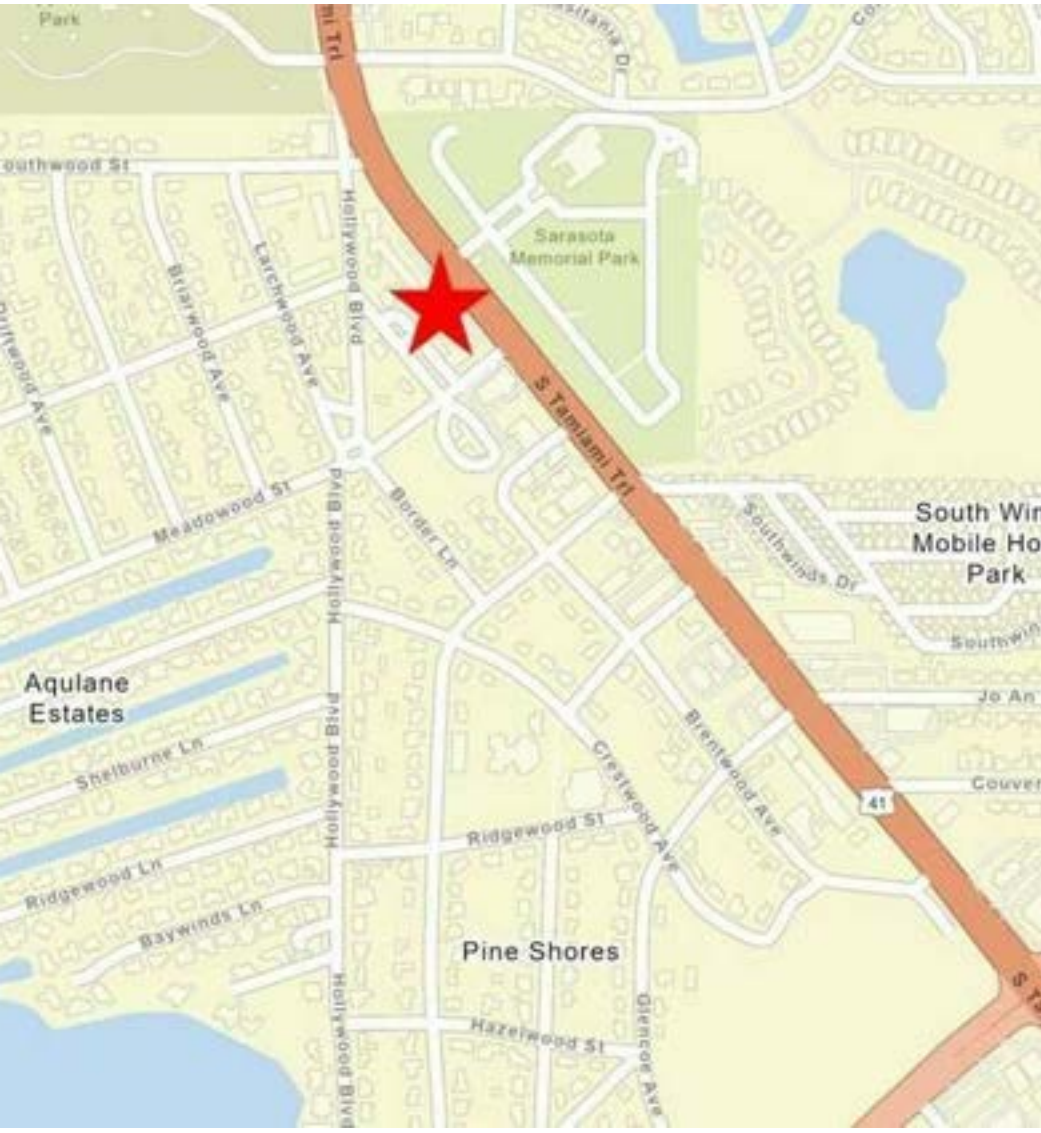


MSC

COMMERCIAL
REAL ESTATE

5900 S TAMiami TRAIL

SUITE 17, SARASOTA, FL 34231



Michael Saunders & Company
LICENSED REAL ESTATE BROKER

1605 Main Street Suite 500 | Sarasota, FL
941.957.3730 | MSCcommercial.com

PRESENTED BY:
SUSAN H. GOLDSTEIN LLC, CCIM, MBA
Senior Commercial Advisor
941.957.3730
susangoldstein@msccommercial.com

DEMOGRAPHIC SUMMARY

5900 S Tamiami Trl, Sarasota, Florida, 34231

Ring of 1 mile

KEY FACTS

6,888

Population



3,624

Households

62.0

Median Age

\$76,993

Median Disposable Income

EDUCATION

3.8%

No High School Diploma



19.7%

High School Graduate



25.8%

Some College/
Associate's Degree



50.7%

Bachelor's/Grad/
Prof Degree

INCOME



\$91,279

Median Household Income



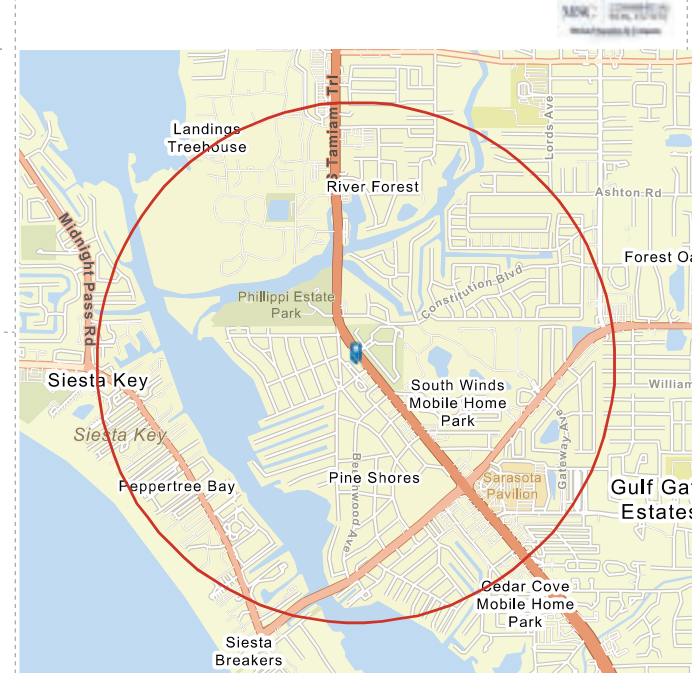
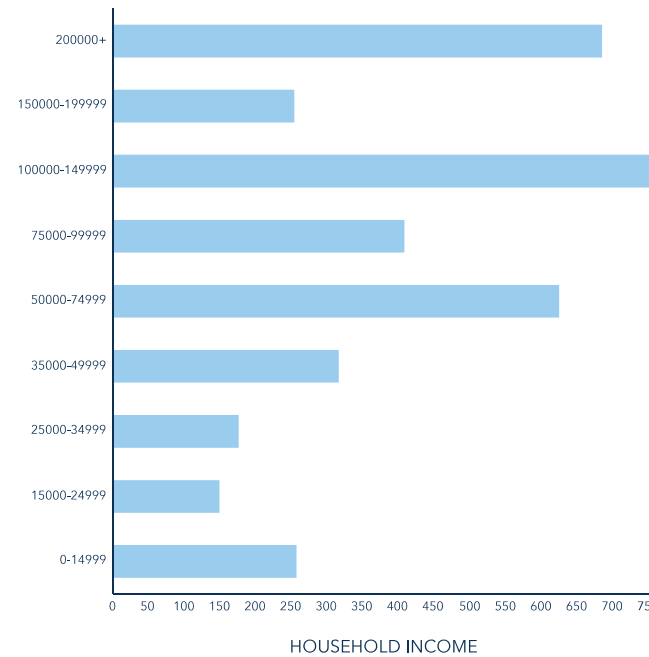
\$75,474

Per Capita Income



\$572,261

Median Net Worth



EMPLOYMENT

75.1%

White Collar

12.7%

Blue Collar

14.4%

Services

4.3%

Unemployment Rate

Source: This infographic contains data provided by Esri (2025, 2030). © 2025 Esri

MSC

COMMERCIAL
REAL ESTATE

5900 S TAMiami TRAIL

SUITE 17, SARASOTA, FL 34231

SUSAN H. GOLDSTEIN LLC, CCIM, MBA

Senior Commercial Advisor



1605 Main Street , Suite 500
Sarasota, FL 34236
T 941.957.3730
C 941.350.9747
susangoldstein@msccommercial.com
FL #3125850

PROFESSIONAL BACKGROUND

Susan Goldstein has repeatedly earned the position of MS&C's Top Producing Commercial Agent. She focuses on sales and leasing in the Sarasota and Manatee County marketplace. Susan provides superior service to her clients.

Balancing an understanding of client needs and objectives with dynamics of the market, the financial realities of all parties, and a willingness to work hard to get the job done contribute to Susan's success. Susan has been involved in a multitude of transactions with clients ranging from national corporations to local businesses and developers. Susan is considered an important player in the vibrant commercial real estate arena.

With an MBA from Columbia University, strong marketing experience with companies such as American Express and Proctor & Gamble, along with the CCIM Designation, the highest level of Commercial Realtor educational achievement, Susan ensures her clients the most professional and profitable real estate transaction.

EDUCATION

CCIM Designation
Columbia University Business School MBA
Duke University BA

MEMBERSHIPS & AFFILIATIONS

The Commercial Real Estate Association (CREA) of the Realtor Association of Sarasota and Manatee, 2019 President, Board Member
Lakewood Ranch Business Alliance Governmental Affairs Committee Chair and Executive Committee Member
Columbia University Alumni Club Past President
Realtor Association of Sarasota & Manatee: Past Public Policy Chair, Attorney/ Realtor Committee Chair
The Sarasota and Manatee County Economic Development Corporation Real Estate Office Oversight Committee

Michael Saunders & Company
LICENSED REAL ESTATE BROKER

1605 Main Street Suite 500 | Sarasota, FL
941.957.3730 | MSCcommercial.com

PRESENTED BY:

SUSAN H. GOLDSTEIN LLC, CCIM, MBA

Senior Commercial Advisor
941.957.3730
susangoldstein@msccommercial.com

COMMERCIAL OFFERING MEMORANDUM/BROCHURES DISCLOSURE

MS&C Commercial, a Division of Michael Saunders & Company

MS&C Commercial as the Property Owner's representative has been authorized to provide select persons/entities with materials to assess any interest in pursuing further discussions with the Property Owner. Only a fully signed contract will bind the Owner and you. Acceptance of the materials serves as your confirmation of the following conditions: the information cannot be duplicated or provided to a third party; no materials, records, or representations offered, to include but not limited to financial, environmental, zoning, use or income, are warranted or guaranteed to be accurate, current or complete. Prior to executing any purchase contract you assume all responsibility to independently verify any representation relied upon, whether verbal or written, and you agree to hold Owner and MSC harmless from any error or inaccuracy.