

# HOWARD CO. EXECUTIVE CENTER I

3300 North Ridge Road, Ellicott City, MD 21043  
Howard County



## FOR LEASE

### Suite Highlights:

- **Suite 112:** 1,865 rentable square feet
- **Suite 160:** 1,261 rentable square feet
- **Suite 215:** 954 rentable square feet
- **Suite 290:** 3,425 rentable square feet
- **Suite 295:** 1,344 rentable square feet
- **Suite 315:** 1,405 rentable square feet
- **Rental Rate:** \$25.00 per square foot, Full Service annually, including base year building operating expenses, utilities & janitorial

### Building Highlights

- Free and unreserved surface parking; 1 reserved space per 1,500 SF leased
- Deli on campus
- UPS/FedEx/Airborne overnight delivery boxes in building; FIOS Bandwidth
- Three story atrium entrance
- Strategically located at the intersection of Route 29 and Route 40 easily accessible to banking, shopping, restaurants and Columbia Town Center

**Chuck Breitenother**  
cbreitenother@klnb.com  
443-574-1422

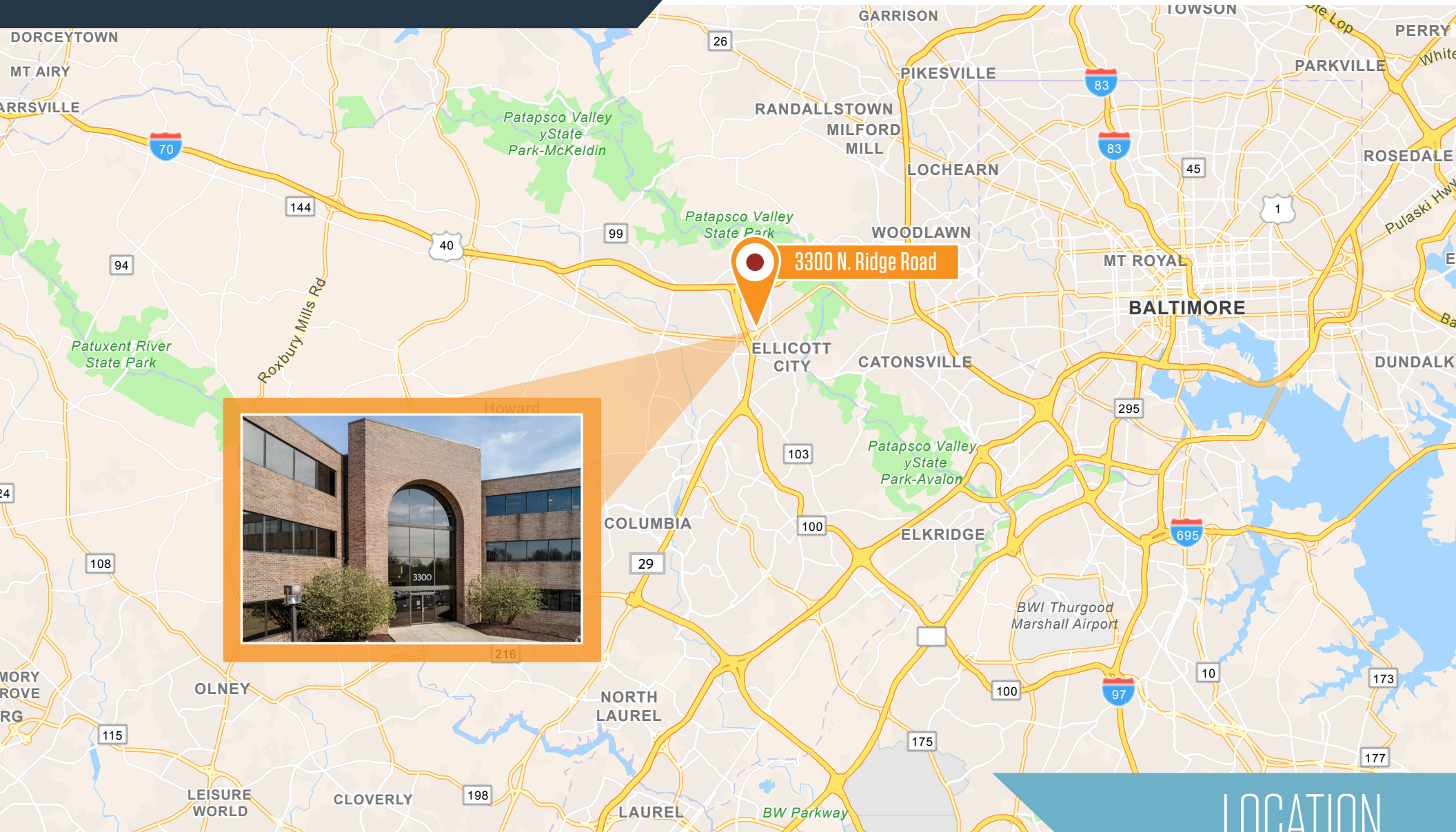
**David J. Fritz, CCIM, SIOR**  
dfritz@klnb.com  
443-574-1410

9881 Broken Land Parkway, #300  
Columbia, MD 21046  
[klnb.com](http://klnb.com)

**NAI**klnb

# HOWARD CO. EXECUTIVE CENTER I

3300 North Ridge Road, Ellicott City, MD 21043  
Howard County



LOCATION

Chuck Breitenother  
cbreitenother@klnb.com  
443-574-1422

David J. Fritz, CCIM, SIOR  
dfritz@klnb.com  
443-574-1410

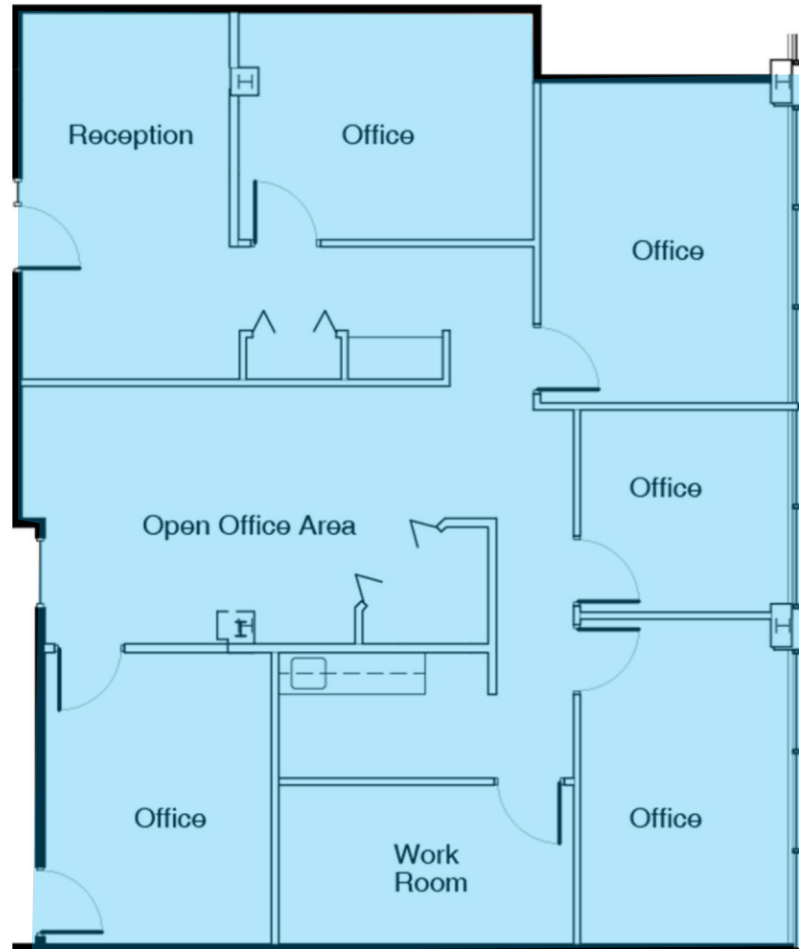
9881 Broken Land Parkway, #300  
Columbia, MD 21046  
klnb.com



# HOWARD CO. EXECUTIVE CENTER I

3300 North Ridge Road, Ellicott City, MD 21043  
Howard County

**SUITE 112**  
1,865 RSF



## FLOOR PLANS

**Chuck Breitenother**  
cbreitenother@klnb.com  
443-574-1422

**David J. Fritz, CCIM, SIOR**  
dfritz@klnb.com  
443-574-1410

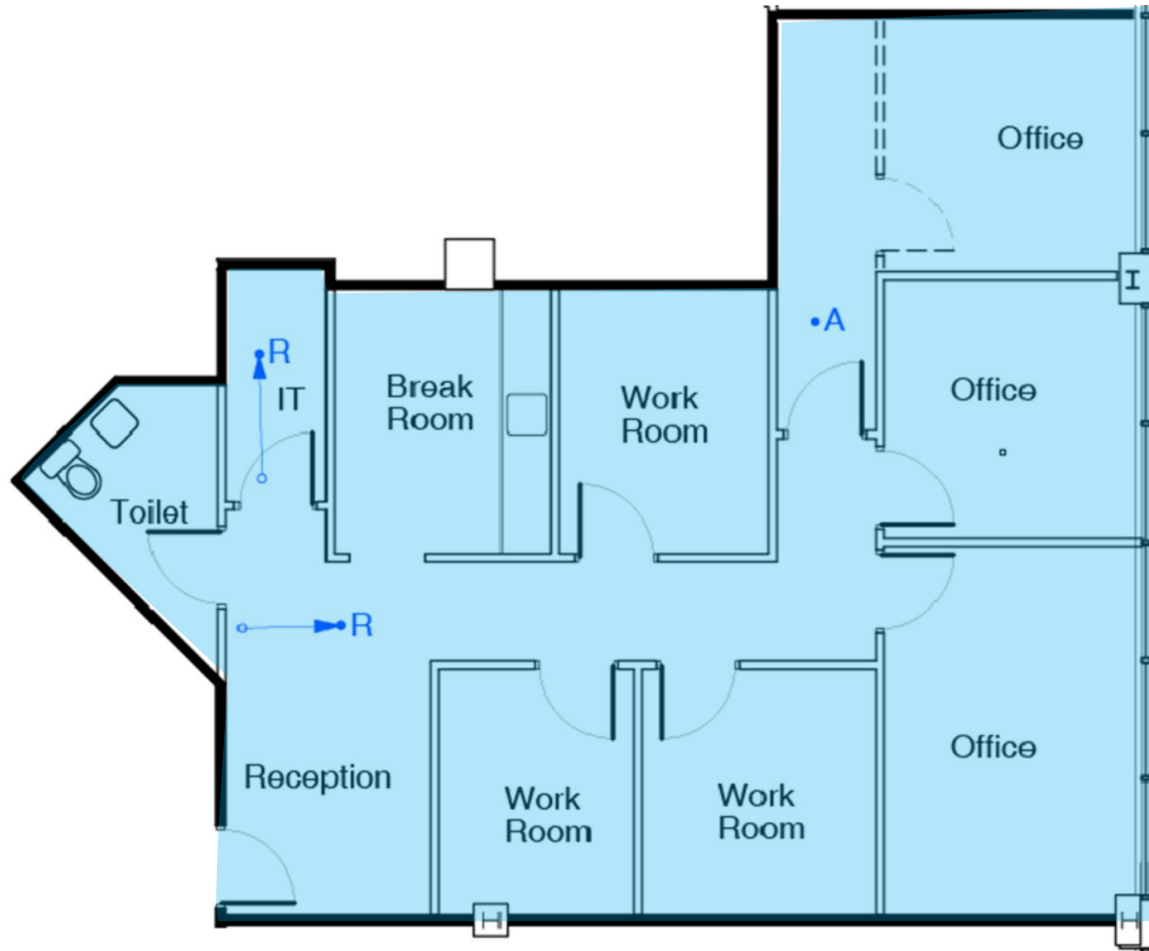
9881 Broken Land Parkway, #300  
Columbia, MD 21046  
klnb.com

**NAI**klnb

# HOWARD CO. EXECUTIVE CENTER I

3300 North Ridge Road, Ellicott City, MD 21043  
Howard County

**SUITE 160**  
1,261 RSF



FLOOR PLANS

Chuck Breitenother  
cbreitenother@klnb.com  
443-574-1422

David J. Fritz, CCIM, SIOR  
dfritz@klnb.com  
443-574-1410

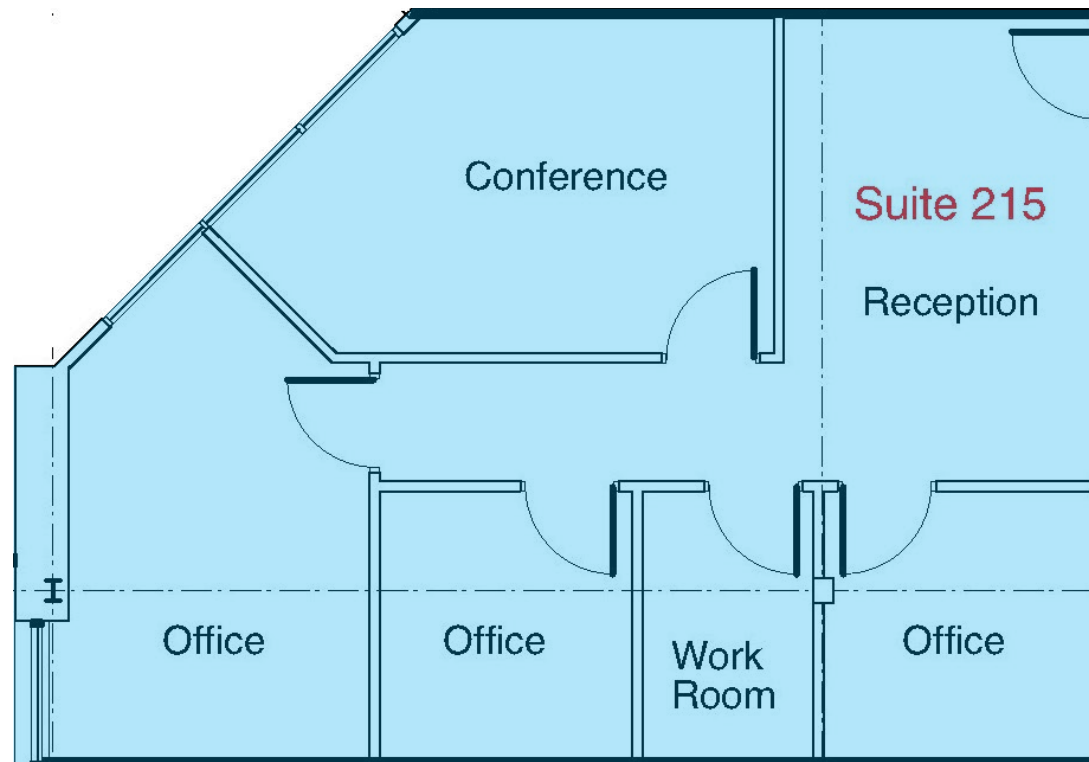
9881 Broken Land Parkway, #300  
Columbia, MD 21046  
klnb.com

**NAI**klnb

# HOWARD CO. EXECUTIVE CENTER I

3300 North Ridge Road, Ellicott City, MD 21043  
Howard County

**SUITE 215**  
954 RSF



FLOOR PLANS

**Chuck Breitenother**  
cbreitenother@klnb.com  
443-574-1422

**David J. Fritz, CCIM, SIOR**  
dfritz@klnb.com  
443-574-1410

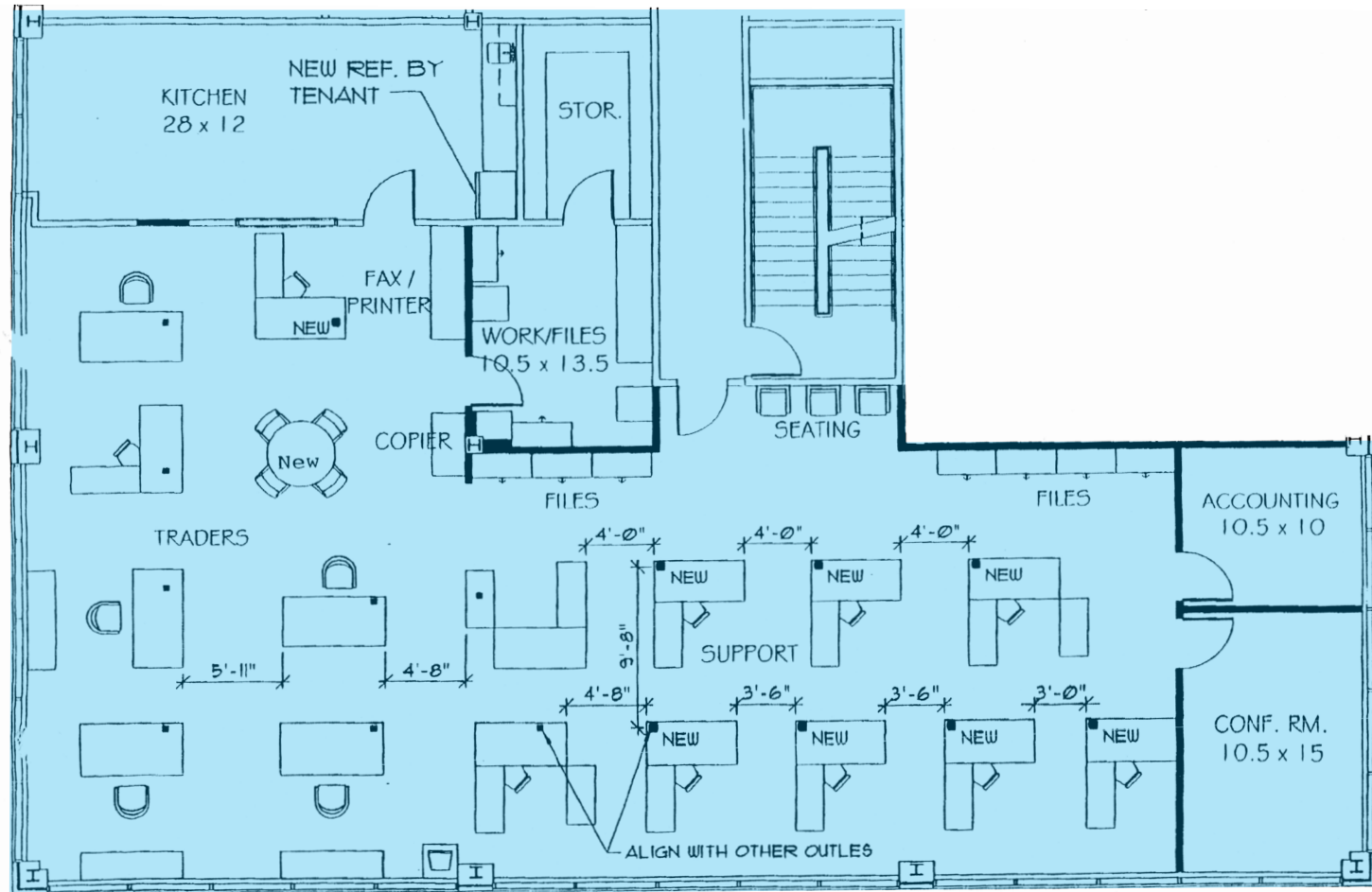
9881 Broken Land Parkway, #300  
Columbia, MD 21046  
klnb.com

**NAI**klnb

# HOWARD CO. EXECUTIVE CENTER I

3300 North Ridge Road, Ellicott City, MD 21043  
Howard County

**SUITE 290**  
3,425 RSF



**CORNER SUITE WITH 3 SIDES OF GLASS**

FLOOR PLANS

Chuck Breitenother  
cbreitenother@klnb.com  
443-574-1422

David J. Fritz, CCIM, SIOR  
dfritz@klnb.com  
443-574-1410

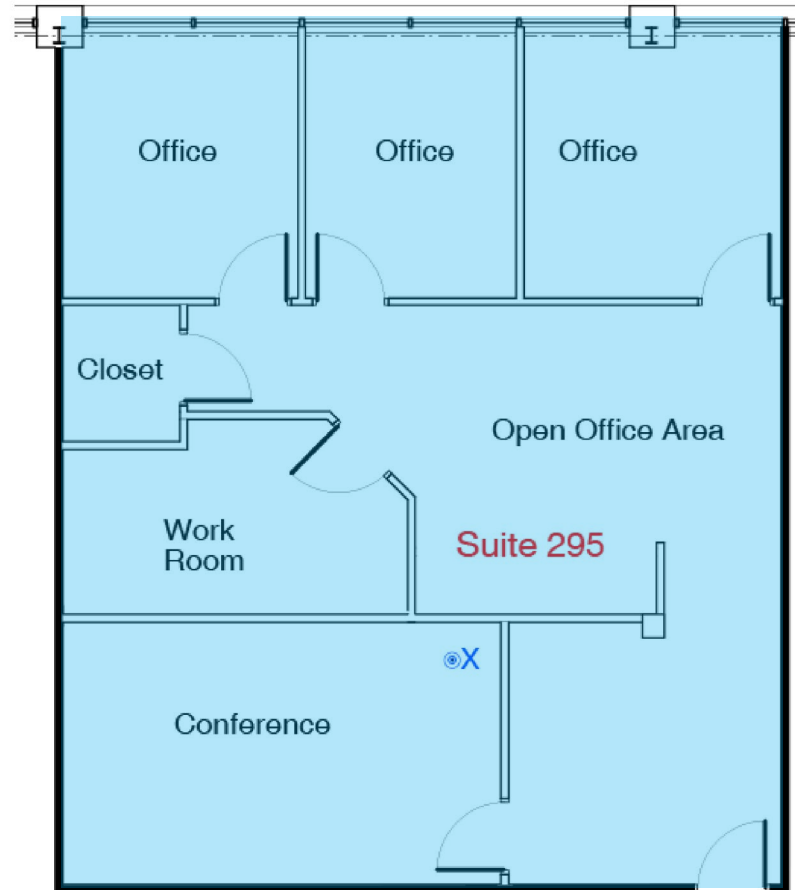
9881 Broken Land Parkway, #300  
Columbia, MD 21046  
klnb.com

**NAI**klnb

# HOWARD CO. EXECUTIVE CENTER I

3300 North Ridge Road, Ellicott City, MD 21043  
Howard County

**SUITE 295**  
1,344 RSF



FLOOR PLANS

**Chuck Breitenother**  
cbreitenother@klnb.com  
443-574-1422

**David J. Fritz, CCIM, SIOR**  
dfritz@klnb.com  
443-574-1410

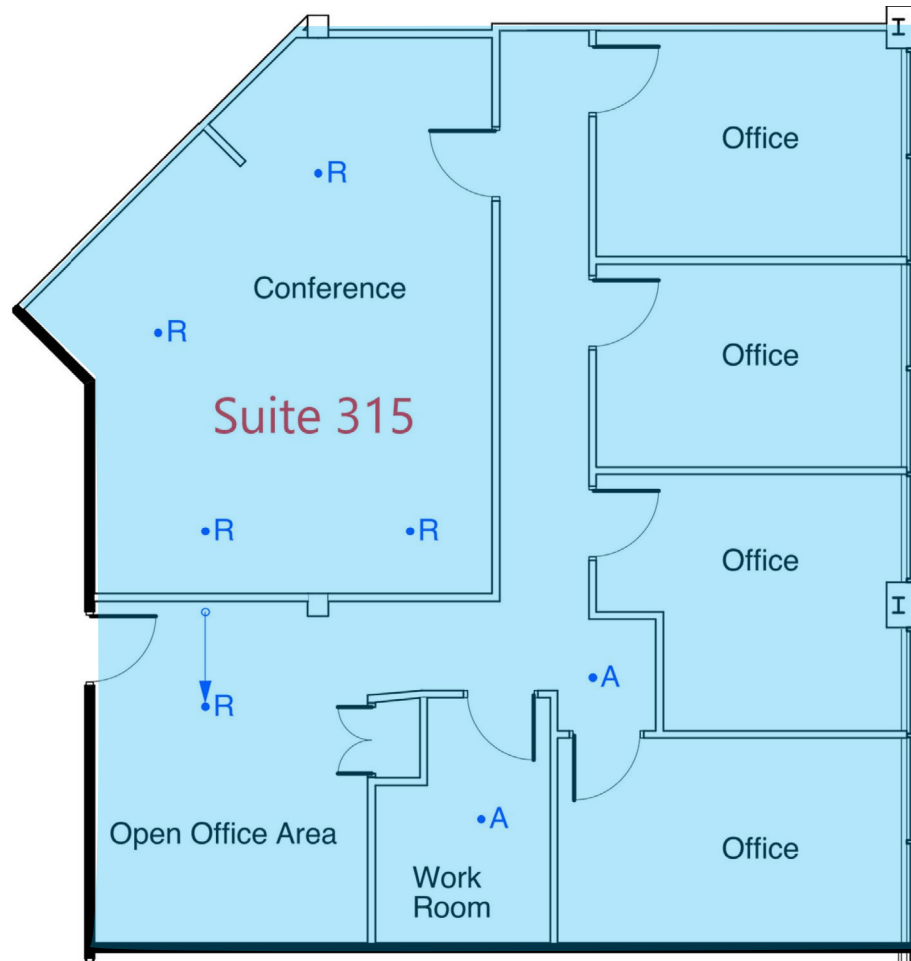
9881 Broken Land Parkway, #300  
Columbia, MD 21046  
klnb.com

**NAI**klnb

# HOWARD CO. EXECUTIVE CENTER I

3300 North Ridge Road, Ellicott City, MD 21043  
Howard County

**SUITE 315**  
1,405 RSF



FLOOR PLANS

Chuck Breitenother  
cbreitenother@klnb.com  
443-574-1422

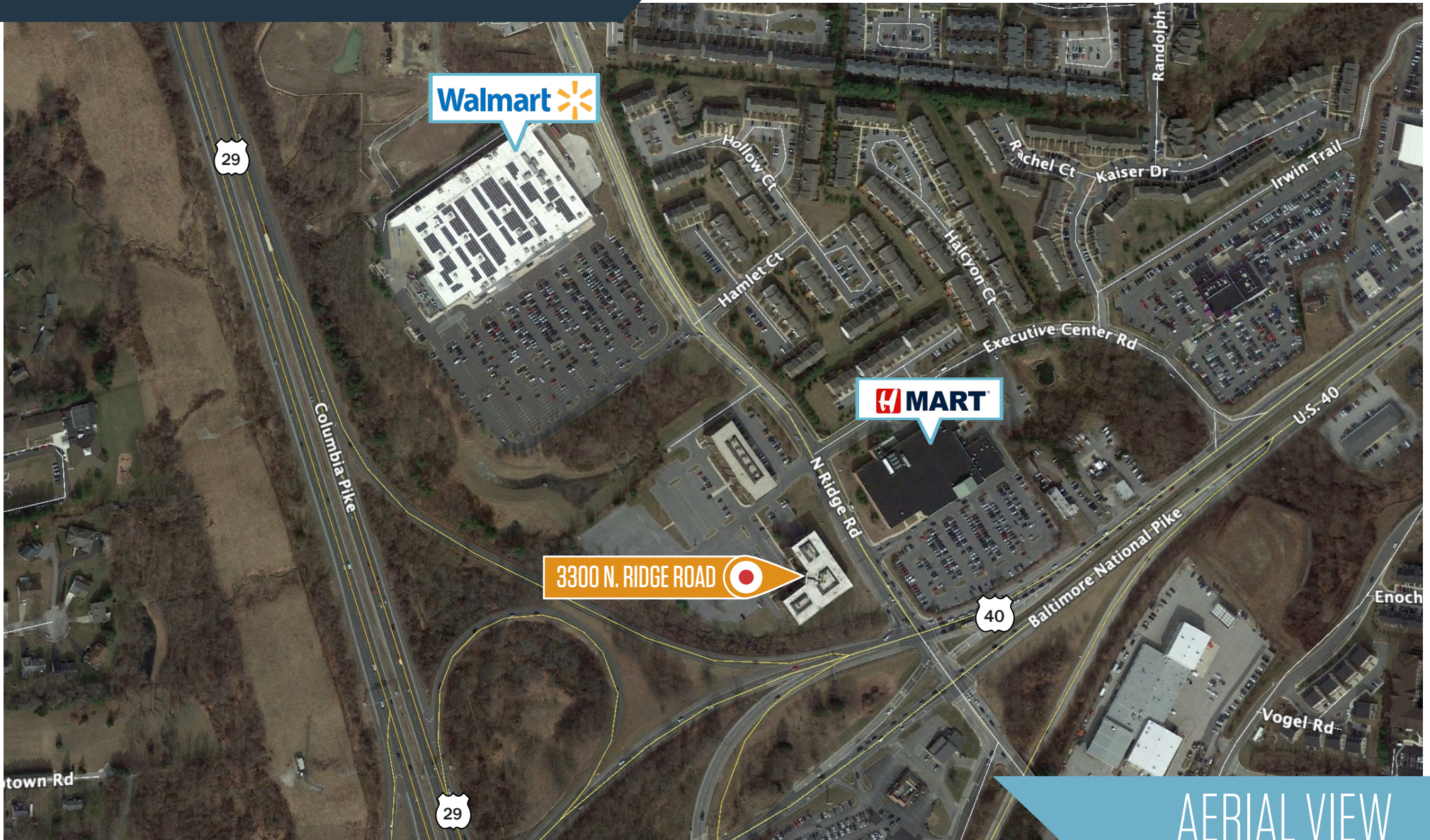
David J. Fritz, CCIM, SIOR  
dfritz@klnb.com  
443-574-1410

9881 Broken Land Parkway, #300  
Columbia, MD 21046  
klnb.com

**NAI**klnb

# HOWARD CO. EXECUTIVE CENTER I

3300 North Ridge Road, Ellicott City, MD 21043  
Howard County



Chuck Breitenother  
cbreitenother@klnb.com  
443-574-1422

David J. Fritz, CCIM, SIOR  
dfritz@klnb.com  
443-574-1410

9881 Broken Land Parkway, #300  
Columbia, MD 21046  
klnb.com

**NA**klnb

# HOWARD CO. EXECUTIVE CENTER I

3300 North Ridge Road, Ellicott City, MD 21043  
Howard County

[CLICK TO VIEW PROPERTY WEBSITE](#)

For More Information, Please Contact:

**Chuck Breitenother**  
cbreitenother@klnb.com  
443-574-1422

**David J. Fritz, CCIM, SIOR**  
dfritz@klnb.com  
443-574-1410

9881 Broken Land Parkway, Suite 300  
Columbia, MD 21046

[klnb.com](http://klnb.com)



[instagram.com/klnbcre](https://www.instagram.com/klnbcre)



[linkedin.com/company/klnb](https://www.linkedin.com/company/klnb)



[facebook.com/KLNBCRE](https://www.facebook.com/KLNBCRE)

While we have no reason to doubt the accuracy of any of the information supplied, we cannot, and do not, guarantee its accuracy. All information should be independently verified prior to a purchase or lease of the property. We are not responsible for errors, omissions, misuse, or misinterpretation of information contained herein and make no warranty of any kind, express or implied, with respect to the property or any other matters.

**NAI** klnb